



Conference Paper

ISPRS journal of photogrammetry and remote sensing, report for the period 1996-2000

Author(s):

Baltsavias, Emmanuel P.

Publication Date:

2000

Permanent Link:

<https://doi.org/10.3929/ethz-a-004333411> →

Rights / License:

[In Copyright - Non-Commercial Use Permitted](#) →

This page was generated automatically upon download from the [ETH Zurich Research Collection](#). For more information please consult the [Terms of use](#).

ISPRS JOURNAL OF PHOTOGRAMMETRY AND REMOTE SENSING (PRS)
(The Official Publication of the International Society for Photogrammetry and Remote Sensing)

Report for the period 1996-2000
Editor-in-Chief, Emmanuel P. Baltsavias

Introduction and major achievements

1996 -2000 was a period of many changes for the Journal. Apart from transferring the News, Calendar, Book Reviews and Event Report Sections to the ISPRS Highlights as from 1 January 1997, a new Editor-in-Chief (EIC) as from 1 July, 1997, and an almost completely new Editorial Advisory Board (EAB) as from 1 January 1998 were elected, two new contracts (in late spring 1997 and 2000) were signed between ISPRS and Elsevier (ES) and between ES and the EIC, and many actions and changes have taken place. The main changes were: electronic form of the journal and electronic subscriptions, establishment of a WEB site, increase of number of papers submitted and number of pages published, improvement of paper quality, longer publication time, establishment of the U.V. Helava Award, much more control of ISPRS on journal matters (incl. journal title), improved financial conditions (esp. much cheaper member subscriptions), increased use of electronic communications in all levels. Most of these changes are positive and were initiated in close co-operation between EIC, ISPRS and ES, aiming at improving PRS, and especially its impact, which depends on its quality, timeliness, affordability, wide distribution and easy access. Details are listed below.

Communications with Council/ES

The EIC was invited to ISPRS Council and Joint Council/TCP meetings and participated in all of them since the middle of 1997, except the spring 1999 one. Apart from the useful discussions in these meetings there was a frequent exchange of communications via e-mail and close co-operation on all journal matters, especially the contracts with ES and the Helava Award. There were three meetings with ES and similarly frequent exchange of e-mails. Co-operation on various issues and production details has been good, with the exception of the responsables for ads who seem to be totally inactive. Some problems have been rarely observed with the proof typesetting and the log-in and tracking of proofs. Information on electronic subscriptions and developments is not so easy to get nor frequent, since these activities are treated by a separate ES department.

Contracts with ES

Both contracts, of 1997 and 2000, and especially the last one led to significant improvements. The major ones include:

- New better defined Aims and Scope were formulated in the 1997 contract (see WEB site).
- Number of pages per year increased from 360 to 480.
- Cheaper personal subscriptions for members of ISPRS members (national, sustaining etc.). From currently 30% of institutional subscriptions (for 2000 359 USD, i.e. 108 USD) to 40 USD, and this for the higher number of pages mentioned above.
- Cheaper personal subscriptions for non ISPRS members. From 359 USD in 2000, to 80 USD from 2001.
- Institutional subscriptions for poor organisations from developing countries (after endorsement by Council). From 359 USD in 2000 to 50 USD from 2001.
- Price for colour figures much lower than average rates of similar journals (400 USD first page, 200 USD every subsequent one).
- Improvement in other financial matters (complimentary free copies, honorarium and travel expenses of EIC, profit sharing of electronic sales, reduced ad rates for sustaining members, free

pages for ISPRS related announcements).

- More control, through consultation or approval, over several topics regarding the journal (e.g. subscription rates, price of individual issues, layout and format of journal, variation of page number, PR material). Control exercised by EIC or Council.
- More control over title of Journal. ISPRS, ISPRS Journal of ..., the logo, the legend "Official Publication ..." and any derivatives thereof belong now to ISPRS (previously the journal title belonged to ES).
- More control over the subscriber's addresses (at termination of the contract with ES)

A new contract between the EIC and ES is under preparation. EIC plans to propose to the next Council another procedure for contract negotiations to cut drastically the effort and time needed for them (currently about one year).

Editorial Advisory Board (EAB)

Out of the 41 old EAB members six were kept and 20 new were added, as from January 1, 1998. A reduction of EAB members was felt necessary in order to have a smaller, more flexible body that could fulfil new responsibilities. The new EAB members has a very good geographic (19 countries) and thematic distribution, and one third of them work at big research organisations or private companies, bringing thus valuable input and experiences from non-academic institutions. The average age of EAB members has been decreased. The percentage of women members, although it more than tripled, is a mere 2 out of 26. While the previous EAB was mainly concerned with reviewing, the new one, although still contributing in reviews, should also be responsible for certain columns (e.g. editorial page), advise the EIC on the definition of aims and scope, editorial policy and review process, instructions for authors, content of the PRS, especially content of Special and Theme Issues, and any topics related to major PRS issues and future changes. They should act as Guest Editors, be responsible for specific PRS columns, or provide articles for them. Unfortunately, due to an overload of the EIC, many of the above ideas did not materialise, although the EAB contributed significantly in reviewing, preparation of Special/Theme issues, and the additional paper evaluation for the Helava Award. New EAB will be appointed starting on January 1, 2001.

The U.V. Helava Award

It was proposed by the EIC in 1997 and the terms of the award were approved by Council in 1998. They were translated in German (P. Waldhaeusl), while translation in French is still pending. EIC found sponsors for the Award (ES and LH Systems), agreements with ISPRS have been made and Stewart Walker got the necessary permission from Helava's family. The Award was publicised in journals (letter of LHS), through the ISPRS award brochure, annual reports, and WEB site, a separate e-mail of the EIC to ISPRS officers and at all Commission Symposia. The two juries for the 1996-1999 period and the selection policy were proposed by the EIC and approved by the Council. The first jury evaluated 119 papers in 15 months and selected in a very careful, thorough and objective procedure the winners for each year. Related authors, sponsors and Council have been informed. The winners were publicised on the WEB pages of ISPRS and PRS, the Highlights and PRS. The second jury selected the final winners. The EIC took actions for the design and preparation of the certificates and the plaque and made the necessary financial arrangements. The plaque was designed with care and lots of personal unselfish work by our colleague and ex ISPRS Treasurer and Commission III President, Einari Kilpela, while the Institute of Photogrammetry and Remote Sensing, Helsinki University of Technology (Prof. H. Haggren) paid half the costs for the silver plaque for this and the next 5 awards. Winners have been contacted and many will participate in the Amsterdam Congress. The presentation of the award will be made at the Opening Session, stressing also from this point the prestige of this new award. Although it can not be quantified, the award has probably led to an increase of incoming papers.

The 1st jury for the period 2000-2003 has been proposed by the EIC and approved by Council.

PR for the Journal

Flyer distributed in all Symposia and some workshops and conferences. Discussion in Business Meetings and short presentation in plenary session in all Symposia, on-line soliciting of good papers in Com. I, IV and V Symposia. A new PR flyer was prepared in 1999 and distributed in various scientific events (UNISPACE III, PHOWO etc.). E-mail to ISPRS officers for recent electronic developments of the Journal. PR for theme issues on Imaging and Modeling for Virtual Reality and Airborne Laser Scanning (special cheap offers, electronic order form on the WEB, payment by credit card). New flyer for 2000 planned, for distribution at the Congress and other ISPRS events. Measures to contact firms for advertising in the journal have been proposed but no action was taken by the ES responsible. It was planned to ask national societies to provide free advertising for PRS in their journals, but it was not implemented. Free copies have been distributed mainly for promotion by the EIC and also to selected persons for the Theme Issue on Automatic Image Orientation.

Dispatch dates

The journal was published according to schedule with no delays in delivery until issue 6/98 when a one-month delay started. Since issue 4/99 the delay has been increased to 2 months. We are currently 1-1.5 issues (2-3 months) behind. Reasons: heavy workload of the EIC (made worse by work for new contracts with ES and Helava Award), poor papers and/or reviews, requiring extensive additional work, delays, some very long, with special/theme issues. The plan is to come back to normal dispatch dates by beginning of 2001 by publishing a double issue in late 2000.

Journal Form

A proposal to change the format to A4 was not adopted due to technical problems. The cost of colour figures starting from 1998 has been reduced to more than 50%, thus easing use of colour which is necessary in certain cases, and giving PRS an advantage over journals in similar areas. Use of colour is rather seldom although last year an increase was observed. The number of colour pages per year were: 1996/6, 1997/1, 1998/5, 1999/11. The Table of Contents (ToC) is published on the back cover for easier reference, and the title of Special/Theme issues displayed on the front cover. ISPRS has a more prominent presence in the Journal (list of ISPRS Officers in the inside cover, gratis ads for Congress and Symposia, as well as Call for Papers for Theme/Special Issues). The short version of the instructions for authors has been improved, while the full version has been discontinued since it is on the WEB. A list of reviewers has been published, starting in 1997, in the last issue of each year together with the subject and author indices. An attempt was made to find a new figure for the front cover. The three proposals sent were evaluated by the ISPRS officers. The conclusion was that none was particularly good and significantly better than the present cover.

Number of pages

In 1996 the journal had 300 p., ca. 40 of which for Reports, News etc. and 260 for papers. From 1/1/97 all 300 p. were used for papers. In 1998 the official number of pages increased to 360 (20%) and the actual ones to 400 without price increase, while in 1999 381 p. were published. For 2000 ES agreed to increase them to 480 p. without price increase, and although the contract mentioned only 360, to reduce the problem of the long paper queue and provide more space for special/theme issues, which often need more than the average of 60 p. From 2001, the official pages will be 480 according to the new contract. The official and actually published number of pages are shown in Fig. 2. Some other data, e.g. pages/paper are shown in Table 1.

Number of papers

The number of published papers (excl. editorials) has steadily increased the last 4 years, and in total from 1996 to 1999 by 31%. Some data on number of papers are shown in Table 1 and Fig. 1.

The total number of papers (excl. editorials) in 1996-99 was 119, involving 254 authors from 29 countries. The average number of pages per paper is relatively constant, around 10 pages. The number of authors per paper has slightly increased. Female authors are still very few, but they are slowly increasing (esp. in 1999 due to the related special issue).

After a low of papers in the middle of 1998 many papers were submitted, to a large extent due to actions taken during the Symposia and other PR actions and the Helava Award. This in combination with delays of the published theme issues has led to a big queue of regular papers and publication delays, with respective complaints from the authors. To reduce this problem: (a) the number of pages for 1999 was slightly increased; (b) starting from 2000 the number of pages was increased from 360 to 480; (c) normal papers were published with higher priority and only one special/theme issues will appear in 2000. In addition, to be more flexible and adapt to variations of the incoming papers the number of pages per year will be able to vary by up to 10%, without any influence on the subscription rates.

There are now enough papers (not necessarily of good quality) in the pipeline at least for the whole 2001. If the large number of incoming papers is sustained, then revised and accepted papers will take ca. 1.5 year for publication or more. On the other hand, an even further page increase can be risky (future decline of number of papers) and may lead to reduction of subscriptions, if the journal price goes up. Through increase of number of pages to 480 for 2000 and publication of only one special/theme issue in 2000, it is expected to have a return to "normality" by middle of 2001.

Statistics on papers and authors

Table 2 shows the distribution of authors (papers) by country, Fig. 6 the distribution according to geographic region, Fig. 5 the distribution according to country but in ranking groups. Table 1 shows the mean number of papers per country (the larger this number, the larger the concentration of papers in few countries) and also that the number of countries has remained stable although the number of papers have increased considerably. These data show that the traditional concentration of scientific output in few countries is increasing, with the first 8 countries having in 1999 over 80% of the papers! Asia has surpassed N. America in papers, but there too the papers come mainly from few countries (Japan, India, China). The small output of whole L. America and Africa comes, in principle, from two countries, S. Africa and Brazil. Europe is a traditional stronghold of ISPRS. The papers there come mainly from German speaking languages, three large countries (UK, France, Italy) and the Netherlands. Papers from Scandinavia have declined compared to the past. E. Europe is probably the biggest problem.

The topics of the papers are classified according to (a) general content (e.g. theory, application etc.) and (b) thematic content. The results are shown in Tables 3 and 4 and Figs. 7 and 8. Table 5 shows some major thematic topics the last 4 years. From Tables 4 and 5 some conclusions can be drawn. Mapping, esp. airborne based, is not a major issue any more. There are gaps (few papers) on following topics: GIS (all topics), spectral signatures/hyperspectral imaging, SAR, medical imaging, image sequence analysis, direct geocoding, digital airborne cameras, integration of image analysis and Remote Sensing with GIS, environmental and sustainable development/global DB. The first mentioned gaps are more serious. With the planned theme issues on GIS and hyperspectral imaging, and some papers on SAR, the first three topics will be partly covered. However, care must be taken by TCPs and WG Chairs that their topics are sufficiently covered in PRS and they should take initiatives for the submission of such papers.

A positive point is that we have a substantial point of useful overview papers. These need to be increased and here input from TCPs and WG Chairs is required.

Special/theme issues

Such issues have been proposed by the EIC but also the Technical Commissions and individual members. It has been decided in 1997 that efforts should be made so that each Commission proposes and realises one such issue within each 4-year period. All Commissions proposed and

planned such issues, or had them already published before the decision was taken, with the exception of Com. II and VII. In addition, it was agreed to take care: (a) to avoid proposing too many issues, (b) to focus on hot topics, (c) avoid duplications and mixing with best Symposia papers, (d) to decide quickly on topics and selection of 1-3 guest editors for each issue. Based on the current experience, these issues played a positive role and covered topics of all commissions (less Com. VII). However, often some guest editors are quite inactive, causing additional workload for the EIC, and in most cases publication takes a long time, up to two years. This should be reduced to one year.

Published issues (title, guest editors, year, volume/issue, comments)

1. Integration of Digital Images and GIS for Mapping Applications at Urban, Regional and Global Scales, R. Welch, 1996, 51/4
2. Automatic Image Orientation, C. Heipke, 1997, 52/3
3. Computer Assisted Teaching and Learning (CAT/CAL), K. Cho/J. Hoehle, 1997, 52/6
4. Extraction of Man-Made Objects from Aerial and Satellite Images, F. Leberl/R. Kalliany/M. Gruber, 1998, 53/2.
5. Imaging and Modeling for Virtual Reality, S. El-Hakim/W. Foerstner, 1998, 53/6 and two additional papers in the Feb. 99 issue. Very good job from El-Hakim, good papers and reviewers.
6. Airborne Laser Scanning, A. Wehr/U. Lohr, 1999, 54/2-3. 13 papers covering the topic comprehensively, published with a long delay, cost EIC 1000 h work, very positive response by readers and many extra orders.
7. Women's Activities in ISPRS, M. Madden/T. Krugg/M. Sester, 1999, 54/4. 9 papers, very good work from Madden, also here some delays.

In preparation

- Commission IV theme issue "Spatial Modeling and the Fundamentals of GIS", Y.C. Lee/M. Molenaar. 9 submitted invited papers, 6-7 will be published in autumn 2000. Long delay.
- Theme issue on Imaging Spectroscopy and Hyperspectral Imaging, A. Skidmore/F. van den Meer and possibly one more. Papers related to 2nd Earsel Workshop on Imaging Spectroscopy before the Congress (combination of solicited papers from the keynote speakers and selection of the best ones among the 90 submitted). Planned for publication beginning/middle 2001.

Best Symposia papers

Such papers are proposed by each Commission and solicited for publication. Proposals received from Com. I and V, while for the remaining Commissions only individual WG officers answered. Care should be taken not to propose too many papers and not identical to the Symposia papers.

Time required for paper publication

The time from paper receipt to publication has been generally increased from an average of 10 to 20 months. The fluctuations are also large (from 2 to 27 months) and there are additionally differences between regular and special/theme issues (latter are generally published faster) and between good and poor papers. While the time from paper acceptance to publication can not be reduced significantly due to already fast response from ES, the time from receipt to acceptance can be reduced by faster review and paper revision processes.

Quality of Papers and Review Process

There is a great difference in responsiveness and evaluation quality between the reviewers, from very good to very poor or no response. There are several problems in this respect that did not change much, or even slightly deteriorated, during the 4-year period. The major point is that

reviews are not enough strict, detailed, careful, and helpful for the readers, while often they come too late, and sometimes never. Such problems cause time delays and lower quality of published papers. In addition, due to the very wide scope of the journal, selection of appropriate persons is difficult or persons not affiliated to ISPRS need to be contacted. These critical remarks are not meant to decrease the excellent contribution of several authors and EAB members, but to point out topics where improvement is needed. Efforts will be made in co-operation with the new EAB to increase the quality and speed of the reviewing process.

Submission of papers and reviews via e-mail and ftp has been increasingly used to speed up the process and cut costs with painful results for the EIC (software incompatibility, errors, lots of editing to be done).

Incoming papers vary as usual from very poor to very good. Quality of published papers has improved, e.g. in 1998 compared to 1997. Some of the papers are of rather low standards (hastily written, not enough new material, bad English and structure). Author's response to reviewers is generally positive, although sometimes the reviewer's remarks are not observed or new errors are introduced, and almost never authors explain what they edited regarding the concrete reviewer comments. It seems that some authors send the papers simultaneously to several journals, trying to increase their publication list with the least possible effort. Rejected papers or ones needing major revision, costing us a lot of review effort, are sometimes published in other journals. It has even been observed that almost identical papers are concurrently sent twice to PRS. Such phenomena are increasing. To improve paper quality a more *pro-active soliciting* of good papers has started to be established by the EIC and will be strengthened also with the help of the new EAB. Concrete measures have been decided by ISPRS, like appointing for each event persons responsible for selecting and proposing good papers to the EIC, sending the proceedings to the EIC etc., but have been implemented only to a small degree.

Hardcopy subscriptions (number and prices)

Table 6 and Fig. 9 show the change of hardcopy subscriptions. Most peer-reviewed journals suffer from a continuous slow reduction, termed erosion. This is observed in PRS too. Personal subscriptions, do not exist as such, i.e. price is identical to institutional ones. Due to this high price, personal subscriptions are zero. Member subscriptions have been also reduced. Their price was also high and only from the middle of 1997 their price was reduced to 30% of the institutional one. This price was still high, while the 70% reduction was not made widely known until the middle of 1998 at the Symposia. This is probably the reason why only from 1999 an increase in member subscriptions was observed. Some institutional subscriptions in 99 may have been discontinued due to the start of electronic subscriptions (see below). Subscription prices as shown in Fig. 2 have increased slowly, but much less than the page number. Fig. 11 shows the subscriptions according to type and shows clearly the low % of member subscriptions.

The geographic distribution of subscriptions is shown in Fig. 10. In particular, member subscriptions come almost exclusively from W. Europe. The concentration in certain regions and countries is obvious. This alerting fact is in accordance with other data (publication of papers, participation in conferences, R&D output) that show an increasing gap between developed and poorer countries. Major problems in Africa, Latin America, E. Europe, although also many countries in Asia do not have any subscription. The action of ISPRS Council to finance free subscriptions for all National Members in 1994-95 did not bring any result. In 1997 PRS subscriptions were limited to 53 countries, although ISPRS had at that time 99 National Members.

These numbers show that the Journal does not reach all people it should, but also a potential for subscriptions increase, particularly in Eastern Europe, India, China, Japan, as well as middle and large companies, and public organisations. This negative development can be reversed by the new much lower subscriptions rates, but National Members need to inform their members on them and urge them to subscribe. Our aim should be to stop the erosion of institutional subscriptions, increase them in developing countries, increase massively the member ones, and gain new electronic

subscriptions.

Electronic version of the journal

The most important new development regarding the Journal. The electronic Journal (PHOTO-ONLINE) available for free (full text from issue August 98) from October 1999 till now (and for a limited trial period). Thereafter, freely available to all members of institutional subscribers of hardcopy version. The electronic form permits search facilities, free colour, while it opens new possibilities like more images and data than in the hardcopy, clickable paper references with additional information, cross-references to other sources and many more options. Table of contents and abstracts of PRS are freely available for all for current and last 3 years. Electronic journal sold in bundle with other journals to university libraries or consortia (e.g. universities in California, Ohio, Arizona, Sweden), bringing the journal on the desktop of sometimes more than hundred thousand members of a single subscriber. These WEB-based offers are launched under the names ScienceDirect and ScienceDirect OnSite. In the last case all data reside locally for faster access and are managed by special software developed by ES for browsing, searching etc. Such agreements have increased significantly since 1999. A subscription gives access to the full text of the journals to which an institute subscribes as well as to the contents and abstracts of all ES journals to which the institute does not subscribe. If interested in the full text of an article, this can be ordered directly through a document delivery service. One of the latest developments is the launching of a reference-linking service in the first quarter of 2000. This is a co-operative effort among 12 leading scientific publishers such as Academic Press, Blackwell, Kluwer, Springer, Wiley and ES. This allows researchers to move easily from a journal's article reference to the content of the cited journal article. At the outset approximately 3 million articles will be linked, and over half a million more each year thereafter.

Electronic subscriptions

There are no complete and full data yet as there are still some problems with retrieving them from ES's databases. The status of subscriptions end of November 1999 (few data not 100% verified) was: ca. 18 countries (all continents), ca. 61 subscribing consortia, 3 million potential readers or more. Some of the above data may refer to temporary test licences.

Examples of large consortia:

- Univ. of CA System (> 300,000)
- Univ. Texas System (> 224,000)
- Ohio Link (> 500,000)
- Arizona Board of Regents (110,000)
- Univ. Mexico Natl. Auton. (200,000)
- Purdue Univ. System (81,000)

The available data for 2000 are incomplete. However, they show that a large increase of electronic subscriptions should be expected for 2000 based on the example of Japan where 39 new institutions were added to the 7 of 1999.

Abstracting/indexing services and electronic DB

New abstracting/indexing services have been added to increase distribution of information on the PRS contents. The number of such hardcopy services was increased to 12, incl. some very important ones like Current Contents. PRS is included in various electronic DB (CD-based, WEB-based). It is unknown exactly in how many electronic DB PRS is included, but it is included in some important multidisciplinary ones (like ISI's Science Citation Index (WEB of Science) and Current Contents) and in some field-specific ones (Inspec, Compendex Plus). PRS is one of the few journals in our field (and the only one together with PERS in photogrammetry) that is included in the prestigious ISIS's Journal Citation Index and Reports. These services, especially the electronic ones, provide except of the table of contents and bibliographic information often also abstracts,

references, and links to them, or even the possibility of on-line order of separate journal papers. They increase substantially the exposure of our scientific work. EIC has undertaken efforts to increase the availability of the journal in additional electronic and WEB-based databases (results expected the next few months).

WWW

Apart from a page in the ISPRS WWW site, the main Journal pages are administered by ES. Currently, the Journal pages provide information on aims and scope, audience, abstracting and indexing services, editorial board, manuscript status, instructions for authors and file templates (unfortunately both outdated), on-line order form and form for ordering sample copies, table of contents for current and last four years, author and keyword index, list of Special Issues, journal dispatch dates, registration form for ContentsDirect (see below), bibliographic and ordering information, advanced search facilities, links to ISPRS Homepage and Calendar, other relevant journals and neighbouring scientific areas etc.

ContentsDirect is an e-mail alerting service which delivers table of contents of PRS or other ES journals providing information on soon-to-be published papers, as well as calls for papers, calendar of events etc. The manuscript status system OASIS allows authors to obtain password-protected information on the status of their paper from submission of final paper to ES to scheduled publication date.

The journal page at the ISPRS WEB site is one of the most frequently visited. It has moved from Delft to Zurich to allow the editor more flexibility to make corrections. The page was updated with respect to instructions for authors, but still needs improvement. Plan to provide information of papers planned for publication, number of papers in queue plus paper tracking of each individual paper right after submission (possibly password protected). ES provides already now tracking, but only after the proofs are sent to the authors.

Journal related activities for the Congress

EIC made proposals that were discussed with ES and presented to Council and Congress Director. Based on these discussions, the following activities were planned:

- have an exhibition booth with related books and journals, Journal issues (incl. free copies), PR brochures and subscription forms, selling of Special/Theme issues
- letter to companies and sustaining members to put ads in the journal (not implemented)
- have an issue ready for distribution at the Congress with very good quality papers and on a topic very related to the central Congress theme (theme issue of Com. VII but did not materialise)
- announce the new, very reduced personal subscription rates from 2001 (40\$ ISPRS members, 80 \$ nonmembers) and try to solicit subscriptions.
- prepare a new PR flyer
- include gratis ads for the Congress in the journal (decided in 1997, had finally worked starting from issue Dec. 99)
- soliciting of best Congress papers
- presentation of the U.V. Helava award

Financial aspects

ES is covering all journal expenses, pays an honorarium to the EIC and his travel expenses for meetings with ES, and co-sponsors the Helava Award. Authors do not pay page charges except for colour figures. They receive 50 gratis reprints and 30% reduction on all ES publications. ISPRS can place gratis announcements and ads for the Congress (four pages), Symposia (two half pages each), Call for Papers for the Journal, ISPRS Highlights (permanently) and the Helava Award. Sustaining members get 25% reduction on the advertisement rates. Gratis subscriptions are provided to EIC (10), Council, TCPs, Chairman of Financial Commission, EAB members, Honorary Members, Guest Editors (2 for their issue). ES pays ISPRS a percentage of the net sales receipts (the last

period about 5,500 SFr./year). ISPRS pays only half the travel expenses of EIC for meetings with the ISPRS Council, and the rest is paid by ES. Income from ads is very low. The number of ads per year (paid/gratis) were: 1996 (11/0), 1997 (11/3), 1998 (6/4), 1999 (4/2). Most of them, or exclusively the last years, come from ES itself.

Administrative Matters

A new questionnaire for the reviewers, guidelines for Guest Editors of Theme/Special Issues, and guidelines for TC and WG activities related to the Journal have been prepared. Co-operation with TCPs and WG Chairs was good but needs improvement. Some WG Chairs distributed to their members messages of the EIC and provided him with proceedings of workshops they organised for selection of papers, or made proposals themselves.

Varia

- The Journal and ISPRS Highlights have started since end of 1999 the exchange of permanent gratis advertisements.
- New more clear long instructions for authors have been prepared by EIC and will be placed on the Journal WEB page of ISPRS. New template files to conform to the new instructions are still to be prepared.

Main targets for the next period

There many improvements in the last period, esp. administrative, financial, organisational etc. Many things had to be done from scratch. The next period should clearly focus on qualitative improvements. The by far most important targets are: speed of publication, improvement of paper and review quality. Other important aims include:

- Increase of hardcopy subscriptions, esp. member and institutional ones (for developing countries)
- Increase of electronic subscriptions and electronic DBs
- Better co-operation with the EAB, TCPs and WG Chair
- Improved communication with authors
- Increased variety of paper types, new columns
- Better balance of paper thematic contents
- Improved quality and speed for special/theme issues. Selection of hot topics
- Preparation of up-to-date template files
- Reduction of colour figure prices
- Increase of ads
- Additional more flexible features in the journal's electronic form

Closing

With this opportunity I would like to thank former EIC David Tait for his support and help during my work as Associate Editor of PRS and his efforts for a smooth transition, as well as the old EAB members for their valuable contribution in running the Journal affairs and reviewing papers. With the help of the new EAB, a good co-operation with the ISPRS Council and ES, and most importantly, the active support from the TCs, WGs, and all active individual members I am confident that by the next ISPRS period in 2004 we will be able to fulfil to a much higher degree our continuous goal of an international journal, open to all our colleagues, and with high impact in our field.

Tables

Table 1. Statistics for papers, pages, authors and countries.

	Pages for papers only	Papers	Pages/paper	Authors/Female *	Authors/paper	Countries	Papers/country
1996	268	26	10.31	51/2	1.96	17	1.53
1997	295	30	9.83	57/5	1.90	15	2.00
1998	380	27	14.07	65/7	2.40	15	1.80
1999	372	36	10.33	81/17	2.25	16	2.25
Total	1315	119	11.05	254/31	2.13	29	4.10

* including those appearing in more than one paper

Table 2. Distribution of papers according to country. Number of papers per country (sorted in descending order). Papers with authors from different countries are split equally among all countries. Countries with * have papers in all 4 years.

Rank	Country	1999	1998	1997	1996	Total	%	Cumulative %
1	Germany*	9.8	4	6	3	22.8	19.16	19.16
2	USA*	4.3	3.5	3.5	3	14.3	12.04	31.20
3	Netherlands*	5	2.5	1	1.5	10	8.40	39.60
4	India	2	2	4		8	6.72	46.32
5	Switzerland	3.5	1.5		2.5	7.5	6.30	52.62
6	Japan	3		3.5	0.5	7	5.88	58.5
7	UK*	0.5	2	2	2.5	7	5.88	64.38
8	Canada*	1	1	2	1.5	5.5	4.62	69
9	Austria	0.5	4			4.5	3.78	72.78
10	France		2	1	1	4	3.36	76.14
11	Italy	1.5	1		1.5	4	3.36	79.5
12	Australia*	1	0.5	1	1	3.5	2.94	82.44
13	China	0.5			3	3.5	2.94	85.38
14	Denmark			2.5		2.5	2.10	87.48
15	Norway			1	1	2	1.68	89.16
16	S. Africa			1	1	2	1.68	90.84
17	Brazil	1.3	0.5			1.8	1.51	92.35
18	Belgium		1			1	0.84	93.19
19	Finland		1			1	0.84	94.03
20	S. Arabia				1	1	0.84	94.87
21	Spain				1	1	0.84	95.71
22	Sweden	1				1	0.84	96.55
23	Thailand	0.5		0.5		1	0.84	97.39
24	Egypt	0.5				0.5	0.42	97.81
25	Israel			0.5		0.5	0.42	98.23
26	Korea				0.5	0.5	0.42	98.65
27	Malaysia			0.5		0.5	0.42	99.07
28	Poland	0.5				0.5	0.42	99.49
29	Vietnam			0.5		0.5	0.42	100
Total		36	27	30	26	119		

Table 3. Distribution of papers according to general content for 1996-1999.

Content Class	Percentage
<i>Theory and algorithms ("pure")</i>	29.4
<i>Theory and algorithms (mixed with other class)*</i>	11.3
Theory and algorithms (total)	40.7
<i>Applications ("pure")</i>	14.3
<i>Applications (mixed with other class)*</i>	9.7
Applications (total)	24
Overviews, tutorials	11.3
Tests (often related to applications)	7.1
Systems	5.9
Other (education, costs)	3.4
Sensors ("pure")	0.8
Editorials (esp. special/theme issues)	6.7

* In this case papers were assigned half and half to the two major classes. Typically these papers were combination of some theory with some applications/results/tests. This class constitutes the 2nd largest one after theory and algorithms. However, theory and algorithms contain very often no new theories, but rather presentation/slight modification of existing ones. Our real output of new theories is much less than what the 29.4% implies.

Table 4. Distribution of papers according to thematic content for 1996-1999.

Content Class	Percentage
Remote sensing (spaceborne based)*	26.8
Airborne based*	26.3
Close-Range*	14
General (computer vision, education etc.)	12.3
Airborne laser scanning +	11.4
GIS-related	4.4
Other (sonar)	0.9

* These classes contain variable papers referring to systems, processing, algorithms and applications etc. but are related to data/applications referring to one of these 3 scale-based classes.

+ This class, although airborne based, is listed separately as this topic was a major new theme.

Table 5. Some major thematic topics in the period 1996-1999.

Content Class	Percentage
SAT: thematic applications (agriculture, forestry, geology, ...)	13.6
Airborne Laser Scanning (mixed: theory, applications, systems etc.)	11.4
AIR: image orientations (various) and aerial triangulation	5.3
AIR: object extraction (buildings, roads, ...)	5.3
Feature extraction and matching	6.1
AIR:3-D city and building models	3.5
Training and education (due to a theme issue)	4.4
CR: virtual environments and VR	3.5
CR: 3-D registration and modelling	2.6
Total	55.7

SAT ...spaceborne based ; AIR ...airborne based ; CR ...close-range

Table 6. Change of subscriptions (in %). Subscription types are I ...full price insitutional, M ...reduced price personal (ISPRS member), P ...personal (currently zero subscriptions, only 1 in 1997), G ...gratis

Subscription type	Change from 6/99 to 6/2000	Change from 1998 to 1999	Change from 1997 to 1998	Change from 1996 to 1997	Change from 1995 to 1996
M	4.4	-17.9	-3.4	-17.1	-78*
I	-5.2	-5.5	-3.1	-2.0	-1.8
G	0	-13.6	-20.5	2.5	NA
Total	-4.2	-7.1	-5.7	-2.1	-20*

NA ...data for 1995 not available

* Big change is due to the discontinuation at the end of 1995 of the gratis subscriptions for all National Members.

Figures

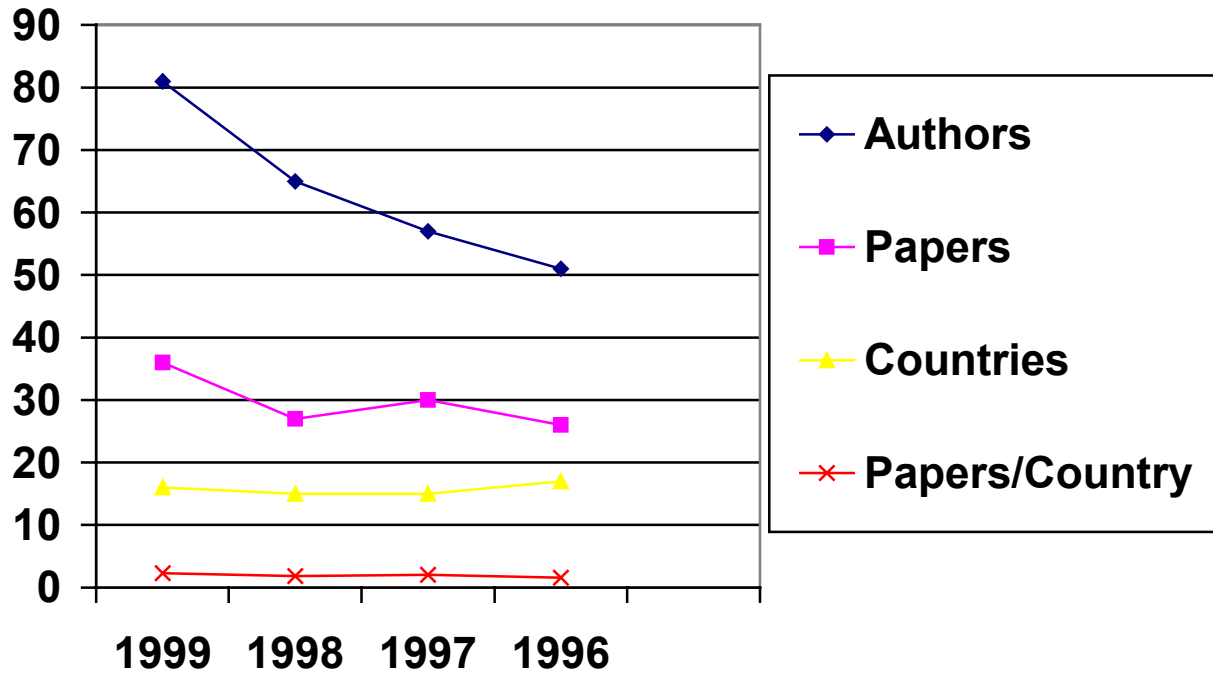


Fig. 1. Statistics for authors, papers, countries.

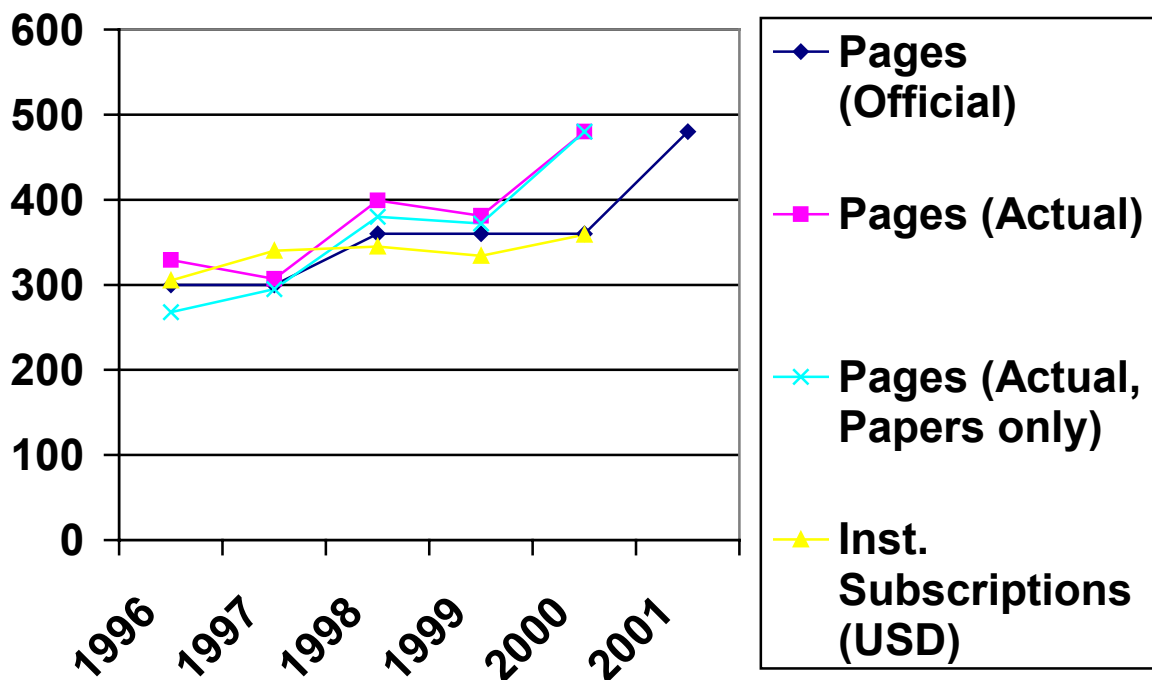


Fig. 2. Development of number of pages and institutional subscription rates.

Time (months) from paper receipt to publication (* ...incl. unreliable data of special issues)

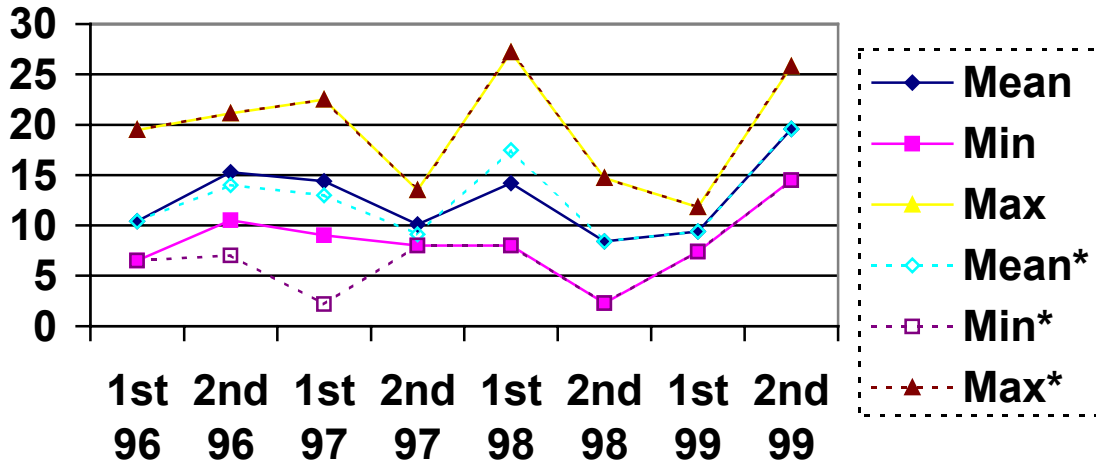


Fig. 3. Development of time required from paper receipt to publication. Including also not very reliable or incomplete data for some special/theme issues.

Time (months) from paper receipt to publication

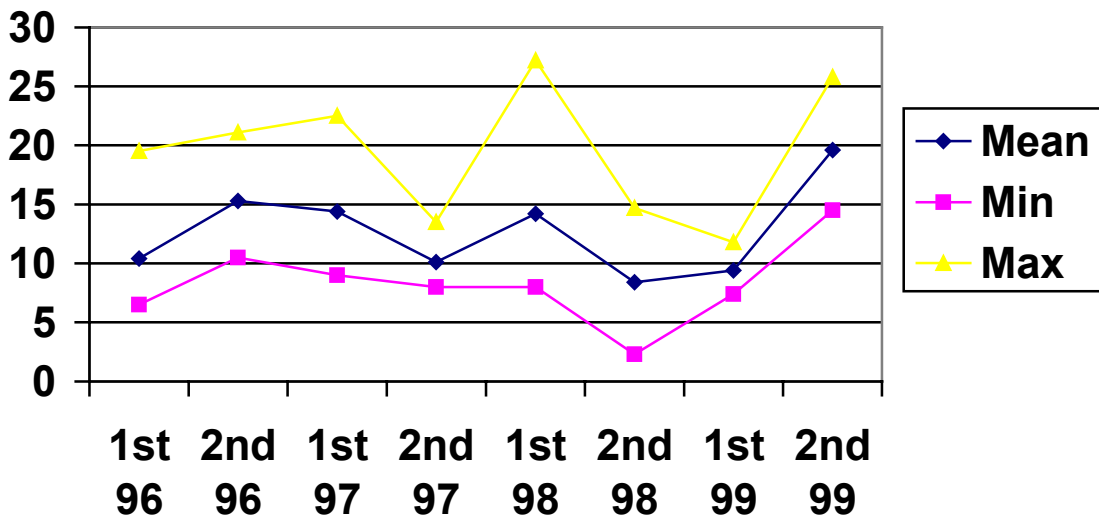


Fig. 4. Development of time required from paper receipt to publication.

Papers (%) according to country (ranking groups)

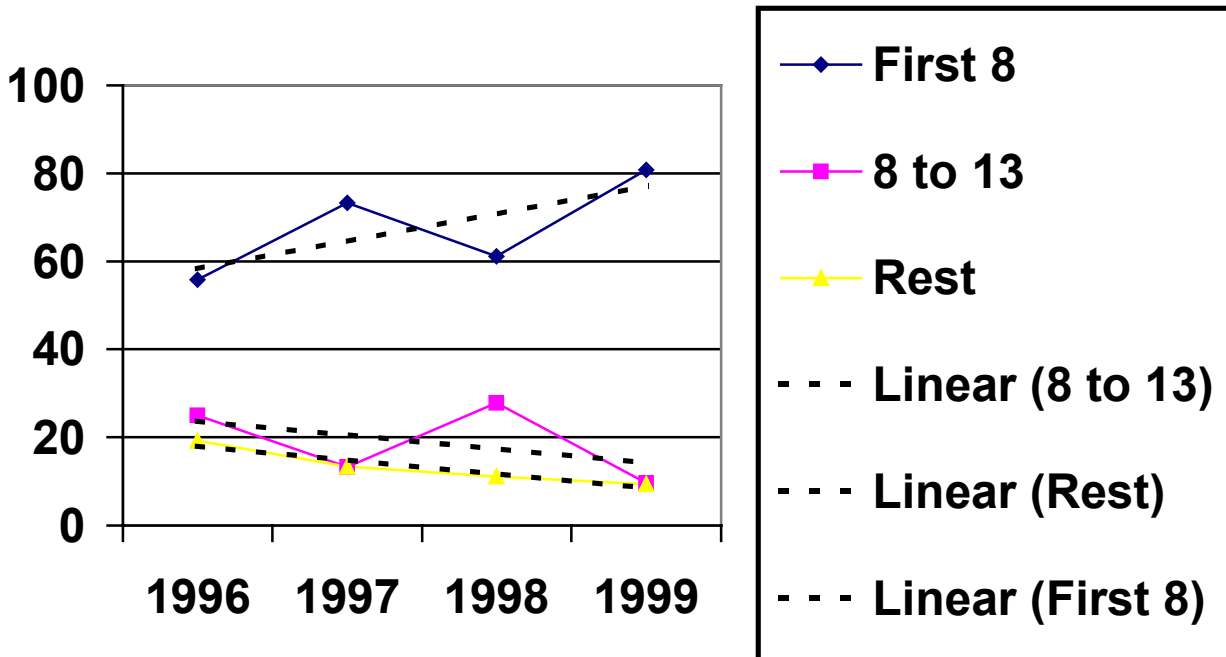


Fig. 5. Distribution of papers according to country. First 8 are the first 8 countries with most papers (see Table 2), etc. The dotted lines show a linear fit (trend).

Papers (%) per geographic region

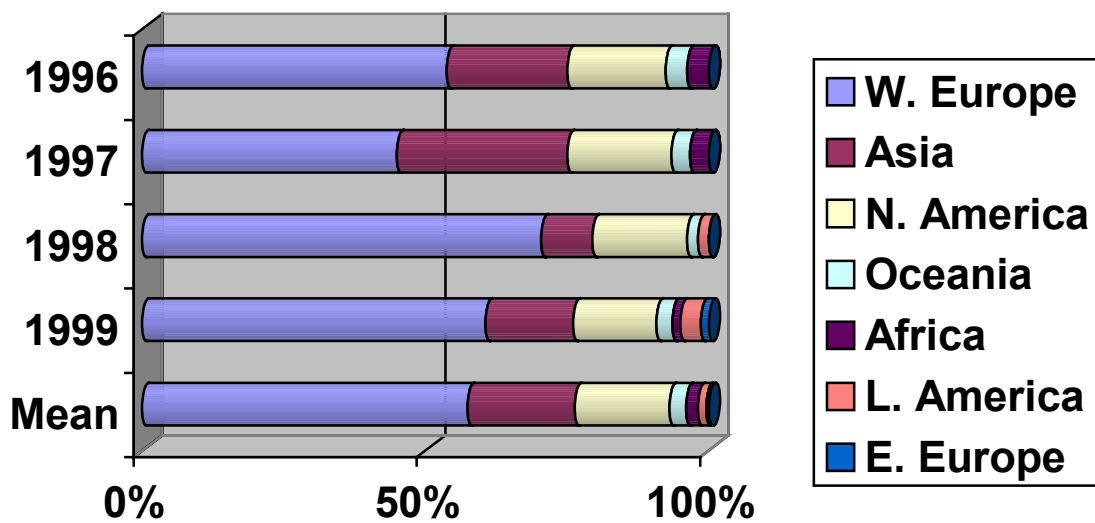


Fig. 6. Distribution of papers according to geographic region.

Paper distribution wrt general content

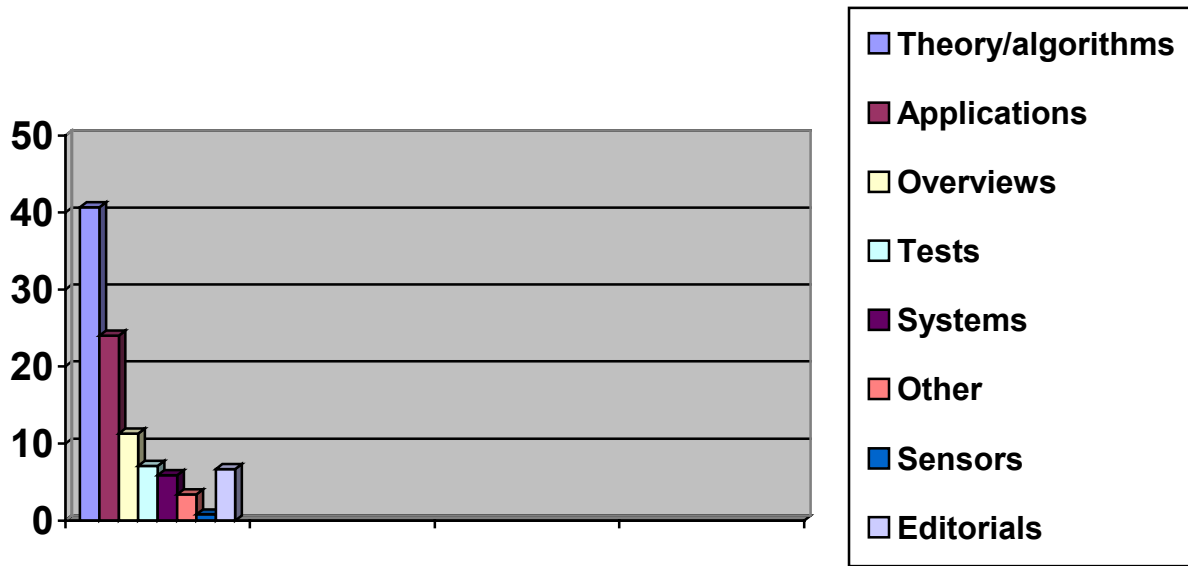


Fig. 7. Paper distribution with respect to general content.

Paper distribution wrt thematic content

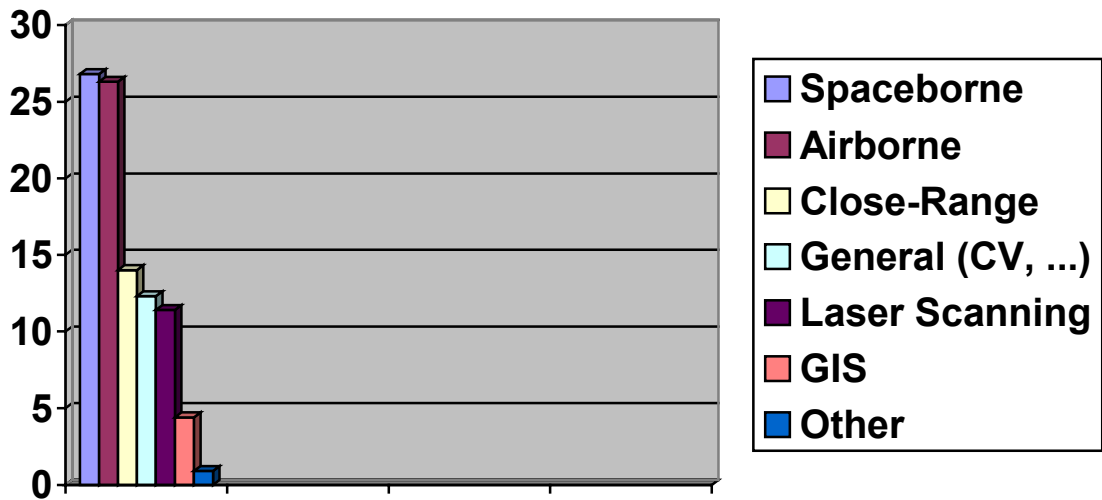


Fig. 8. Paper distribution with respect to broad thematic content classes.

Yearly change (in %) of hardcopy subscriptions

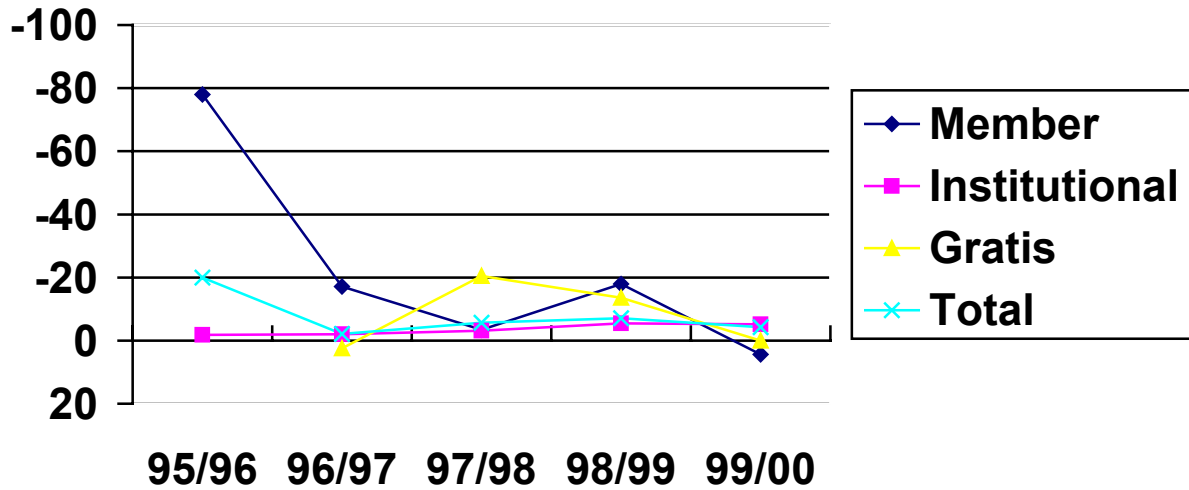


Fig. 9. Yearly change (in %) of hardcopy subscriptions for each subscription type.

2000 subscriptions (%) according to geographic region

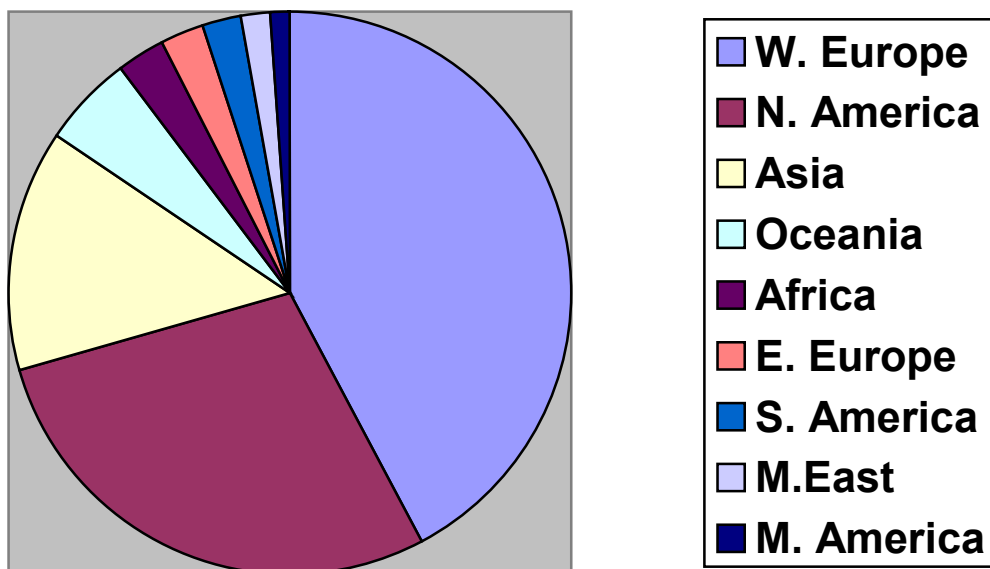


Fig. 10. June 2000 total hardcopy subscriptions (in %) according to geographic region. E. Europe includes all ex USSR countries, Middle East up to Iran, incl. Turkey, Middle America, all Latin countries of N. America.

Subscriptions (in %) according to type

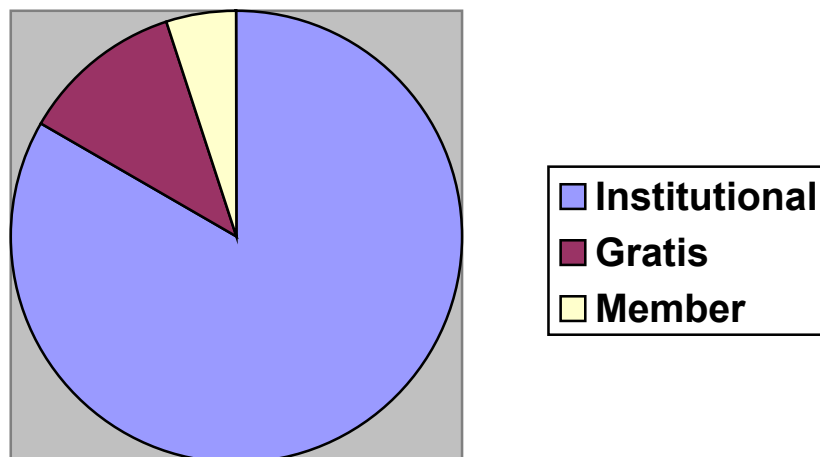


Fig. 11. Subscriptions (in %) according to type.