



Report

Earthquake observation and documentation by the Swiss Earthquake Commission 1880-1900 preliminary results of the historical-critical revision of the earthquake catalogue of Switzerland in the pre-instrumental period of systematic earthquake observation

Author(s):

Grolimund, Remo; Fäh, Donat

Publication Date:

2014

Permanent Link:

<https://doi.org/10.3929/ethz-a-010263681> →

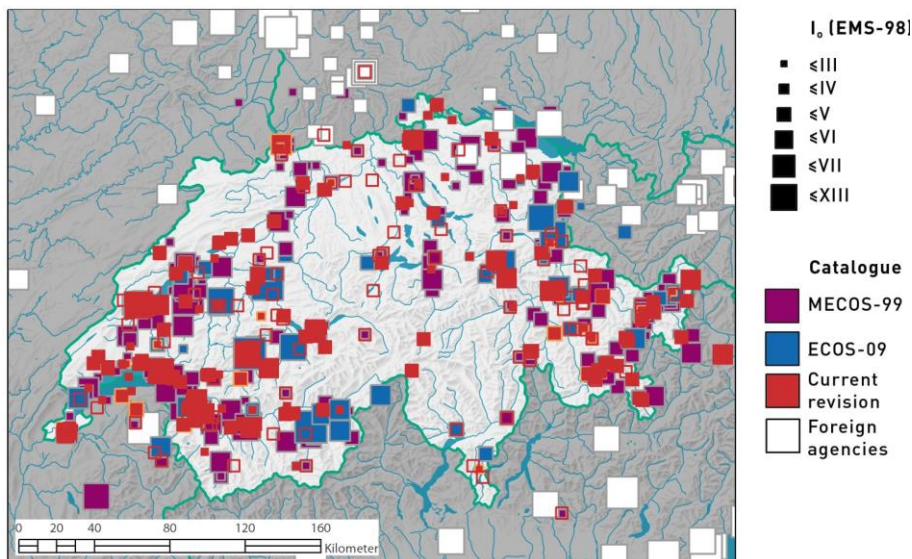
Rights / License:

[In Copyright - Non-Commercial Use Permitted](#) →

This page was generated automatically upon download from the [ETH Zurich Research Collection](#). For more information please consult the [Terms of use](#).

Earthquake Observation and Documentation by the Swiss Earthquake Commission 1880–1900

Preliminary results of the historical-critical revision of the Earthquake Catalogue of Switzerland in the pre-instrumental period of systematic earthquake observation.



Report SED/HIST/R/001/20141031

Remo Grolimund, Donat Fäh

Swiss Seismological Service, ETH Zürich, Switzerland

30/10/2014

Impressum

Herausgeber

Schweizerischer Erdbebendienst an der ETH Zürich, Sonneggstrasse 5, 8092 Zürich

Oktober 2014

Autoren

Remo Grolimund, Donat Fäh