


# 365 days of COVID19 in Switzerland

## Results of the GPS tracking panel

**Presentation**

**Author(s):**

Axhausen, Kay W. 

**Publication date:**

2021-02

**Permanent link:**

<https://doi.org/10.3929/ethz-b-000467323>

**Rights / license:**

In Copyright - Non-Commercial Use Permitted

## Preferred citation style

---

Axhausen, K.W. (2020) 365 days of COVID19 in Switzerland: Results of the GPS tracking panel, presentation at the *NUAA International Workshop for Air Transportation Management*, Zoom, February 2021.

# 365 days of COVID19 in Switzerland: Results of the GPS tracking panel

KW Axhausen

IVT  
ETH  
Zürich

February 2021

 Institut für Verkehrsplanung und Transportsysteme  
Institute for Transport Planning and Systems

**ETH**

Eidgenössische Technische Hochschule Zürich  
Swiss Federal Institute of Technology Zurich

# Acknowledgements

---

ETH Zürich

- J Molloy
- C Tchervenkov
- T Schatzmann

WWZ, Universität Basel

- B Hintermann
- B Schoeman

# MOBIS Sample

---

# MOBIS sample of fall 2019

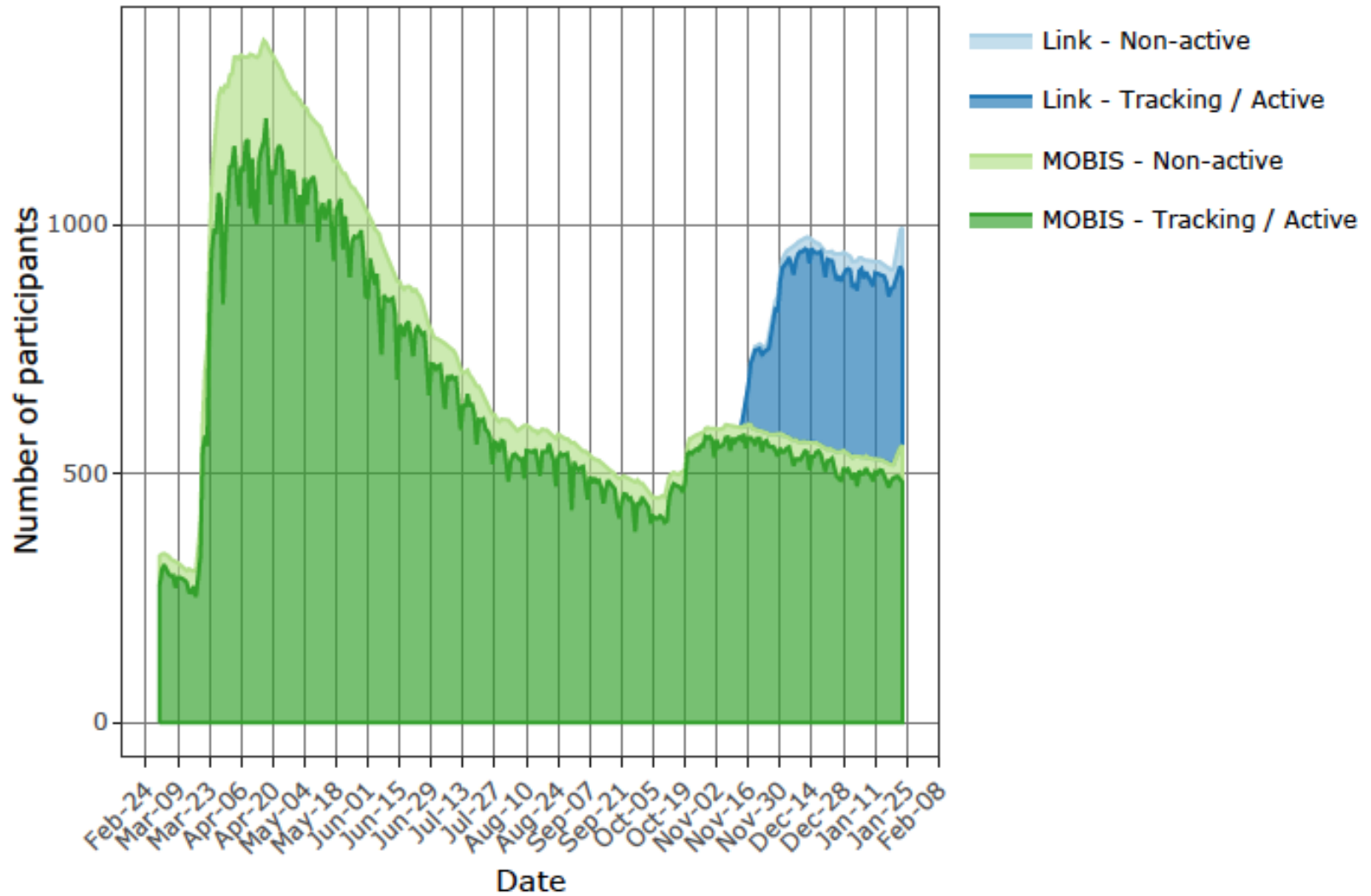
---

- A virtual mobility pricing study with car and transit users
- Yes, the traveller respond substantially
- Agglomerations of the German and French speaking Switzerland
- 3750 participants for 8 weeks; 100 Franks incentive
- About 25% of eligible participated
- Roughly representative on the usual dimensions
- Catch-a-day app (motion-tag, Berlin)

# MOBIS COVID19 sample

---

# MOBIS/COVID19 sample since March 2020

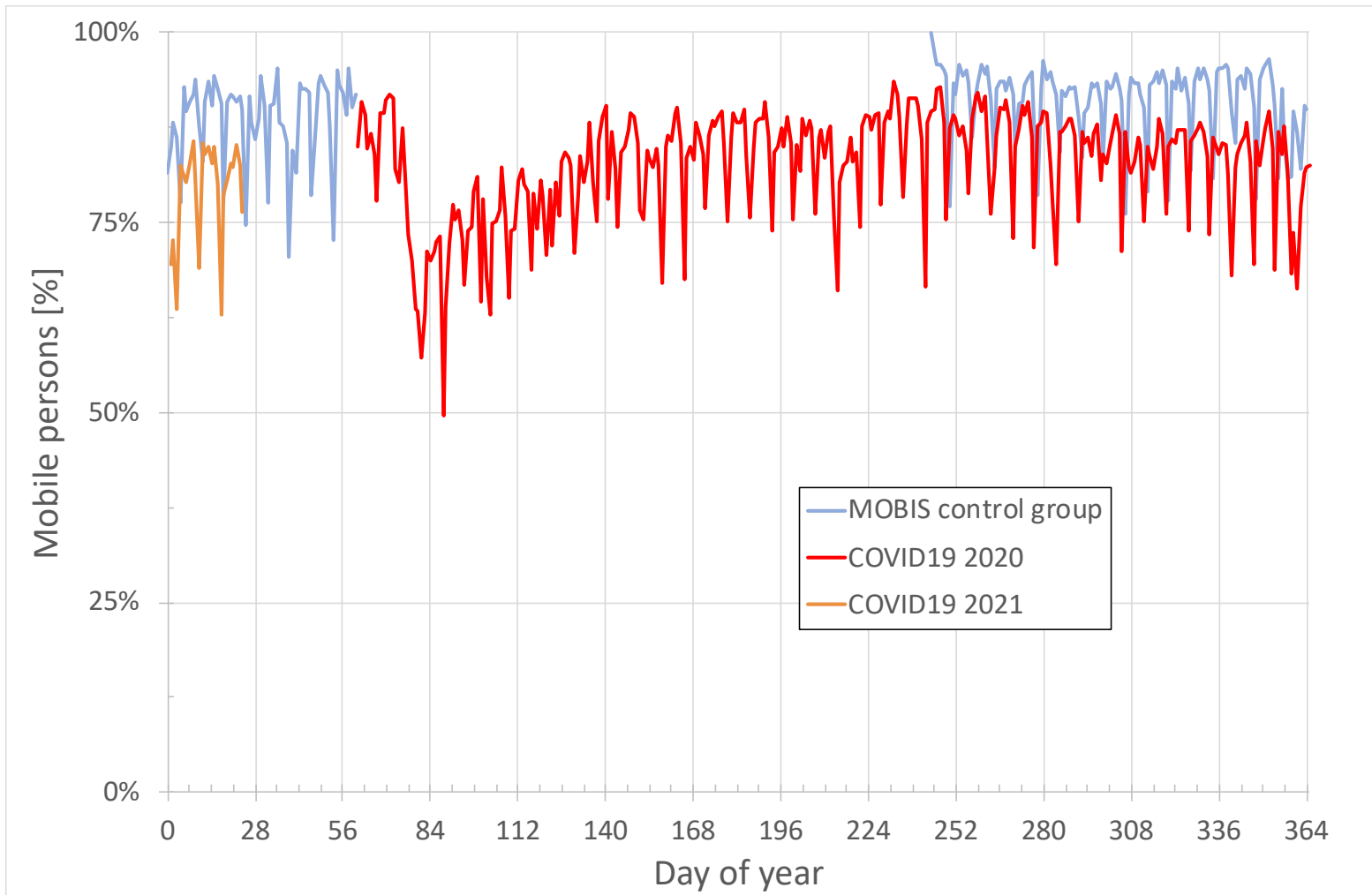




# MOBIS/COVID19: Out-of-home share

---

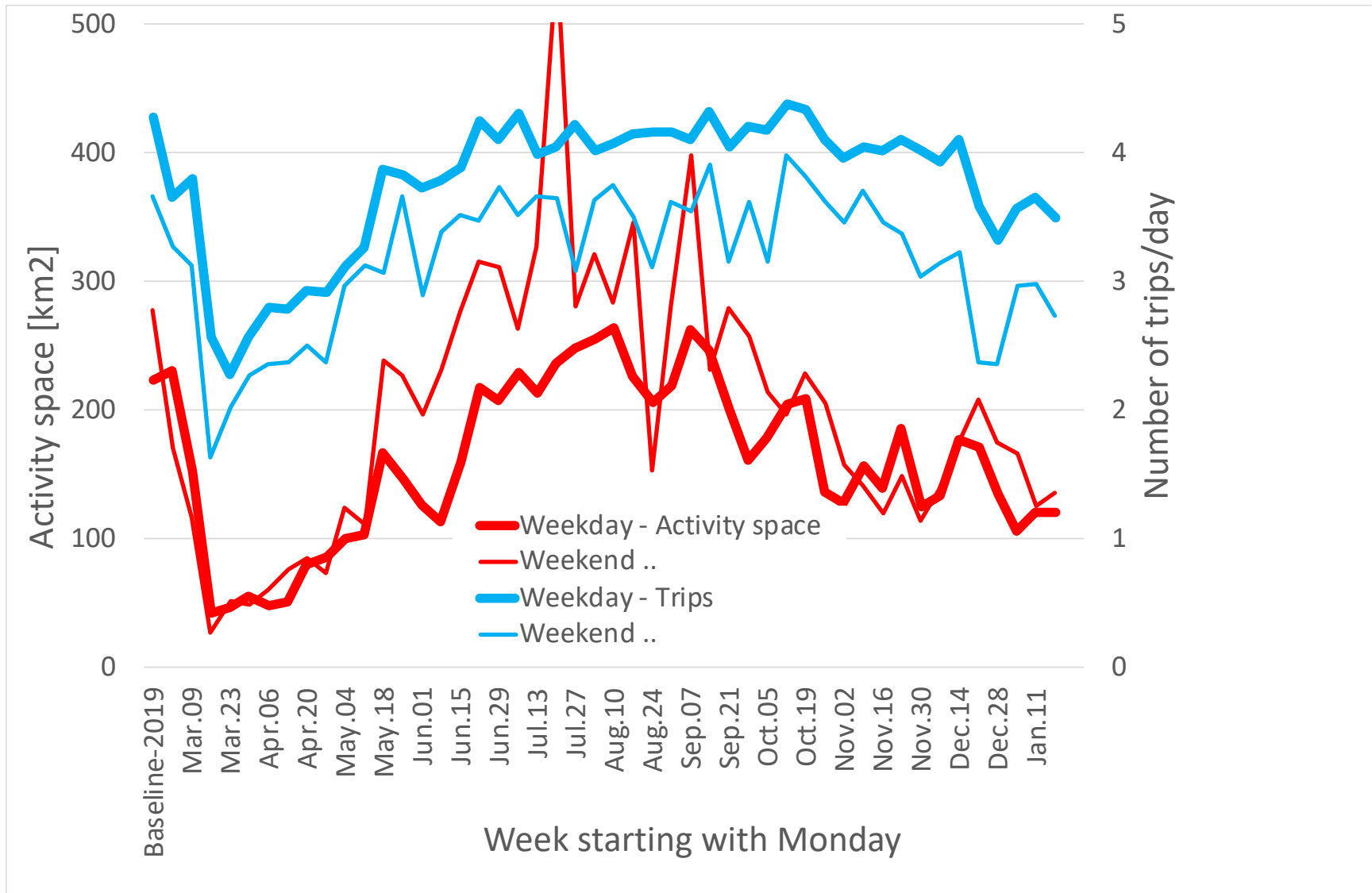
# Share of mobile persons by day since September 2019



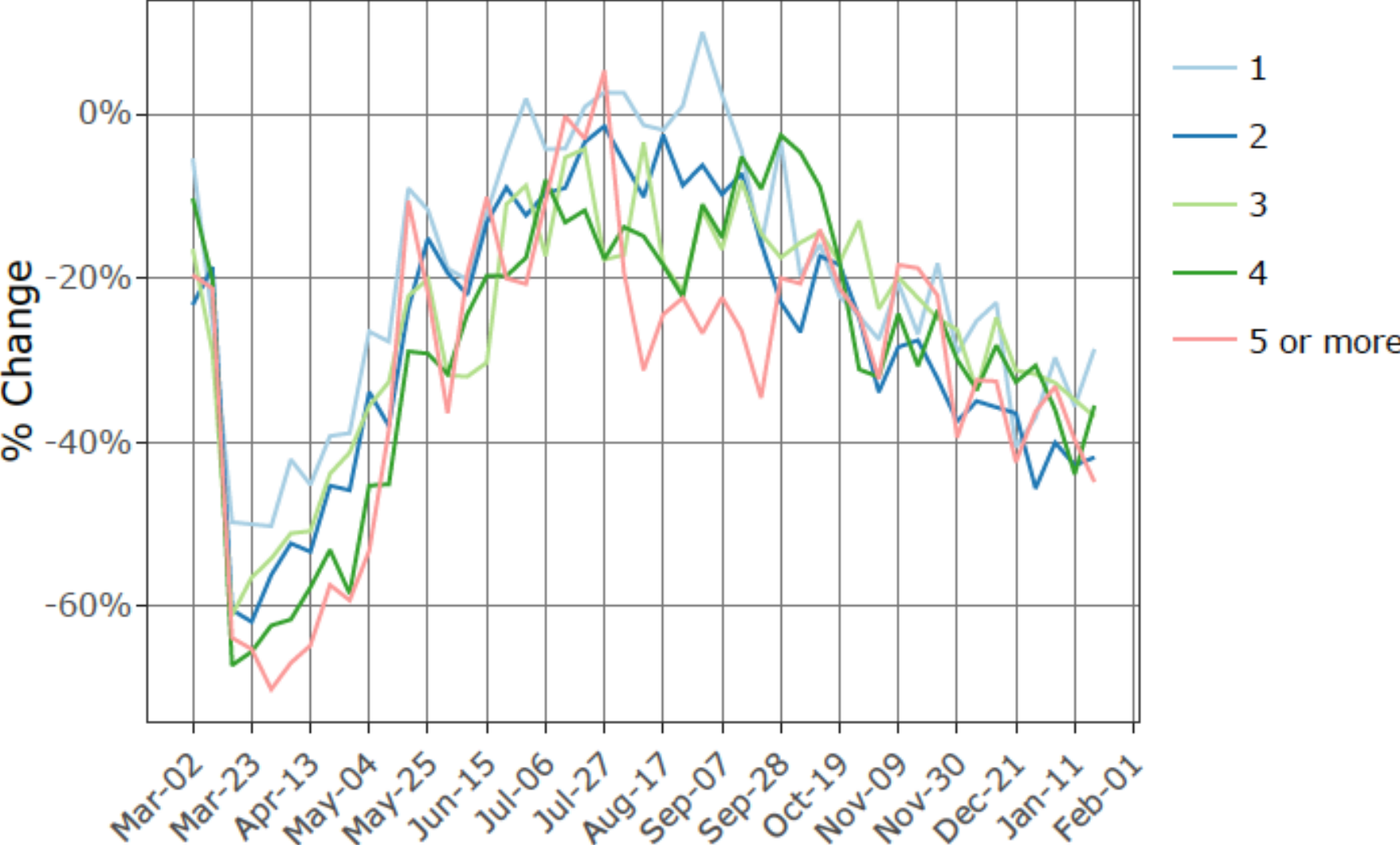
# MOBIS/COVID19: PKm, trips and activity spaces

---

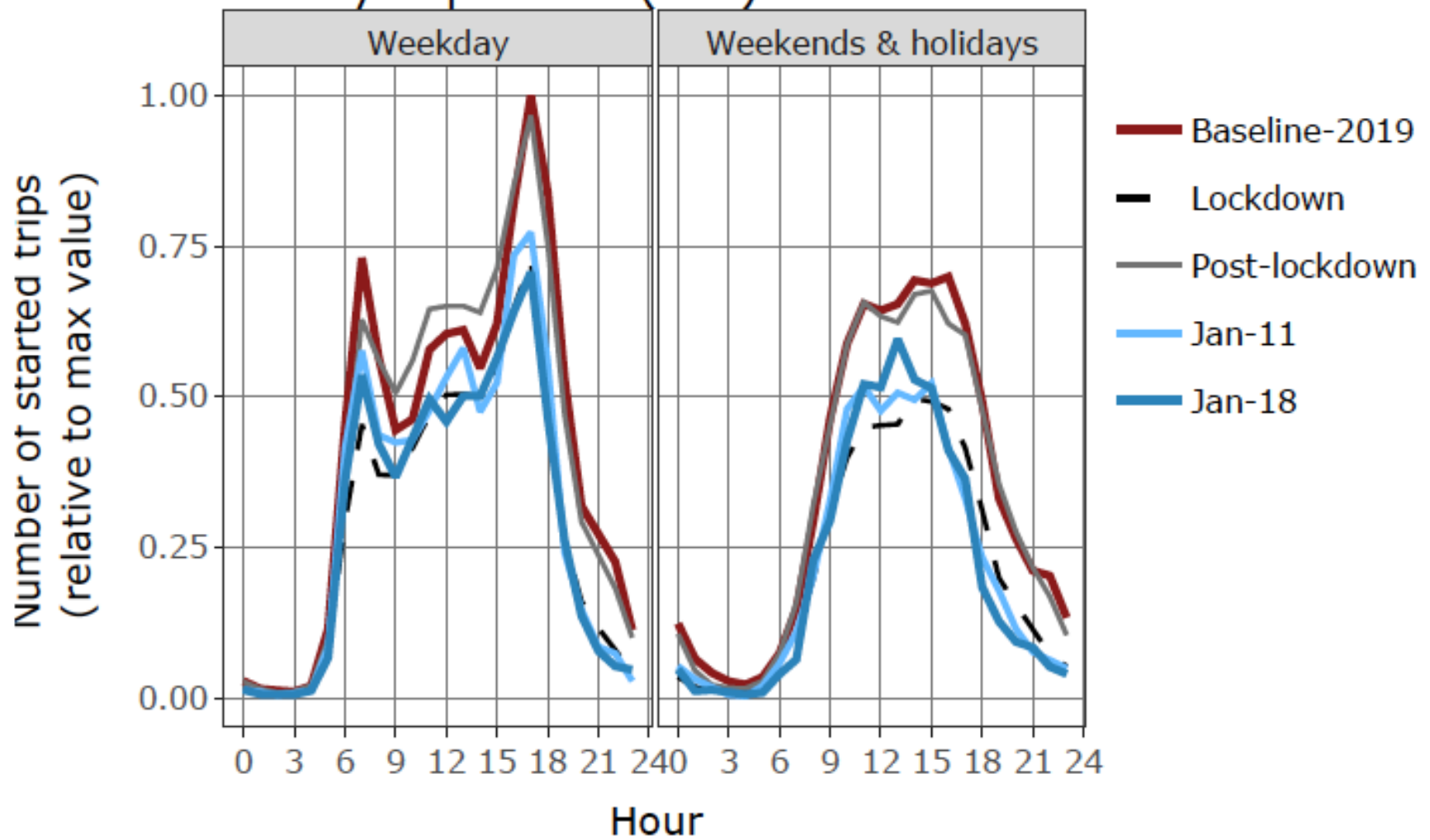
# $\Delta\%$ of number of trips and size of activity space



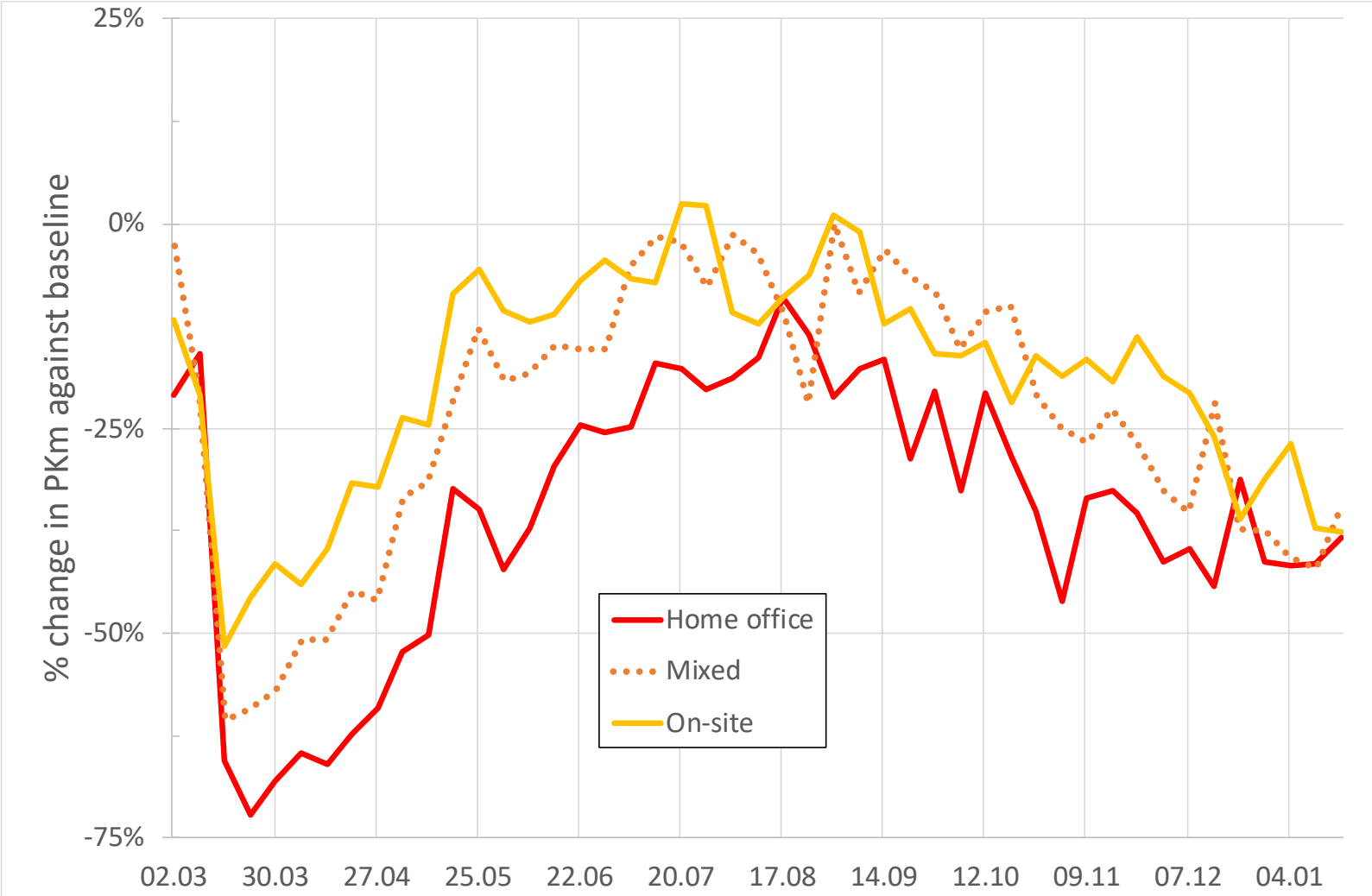
# $\Delta\%$ in PKm by household size



# Shift in temporal patterns



# $\Delta\%$ change in PKm by work location: WFH impact?

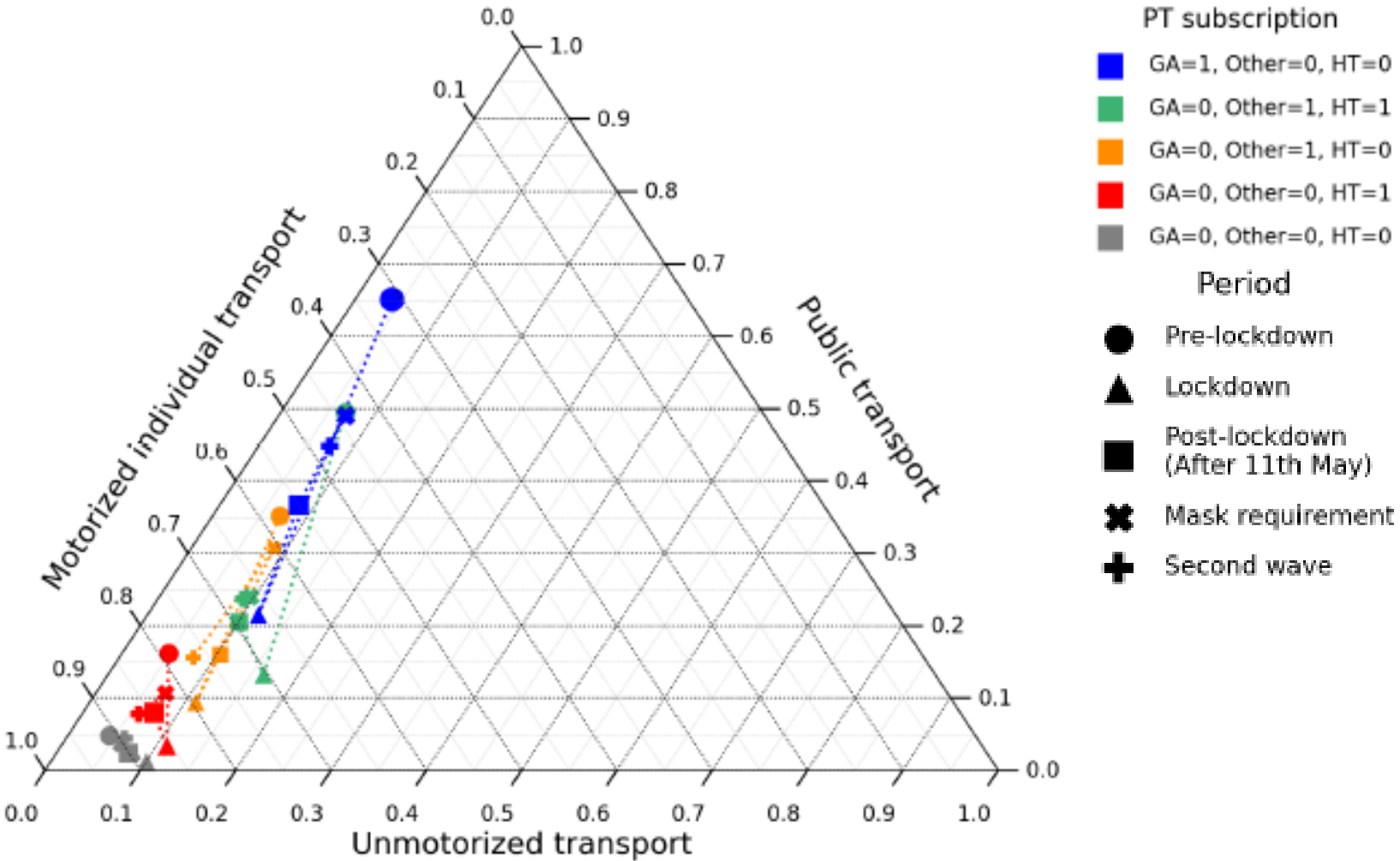


# MOBIS/COVID19: Mode choice

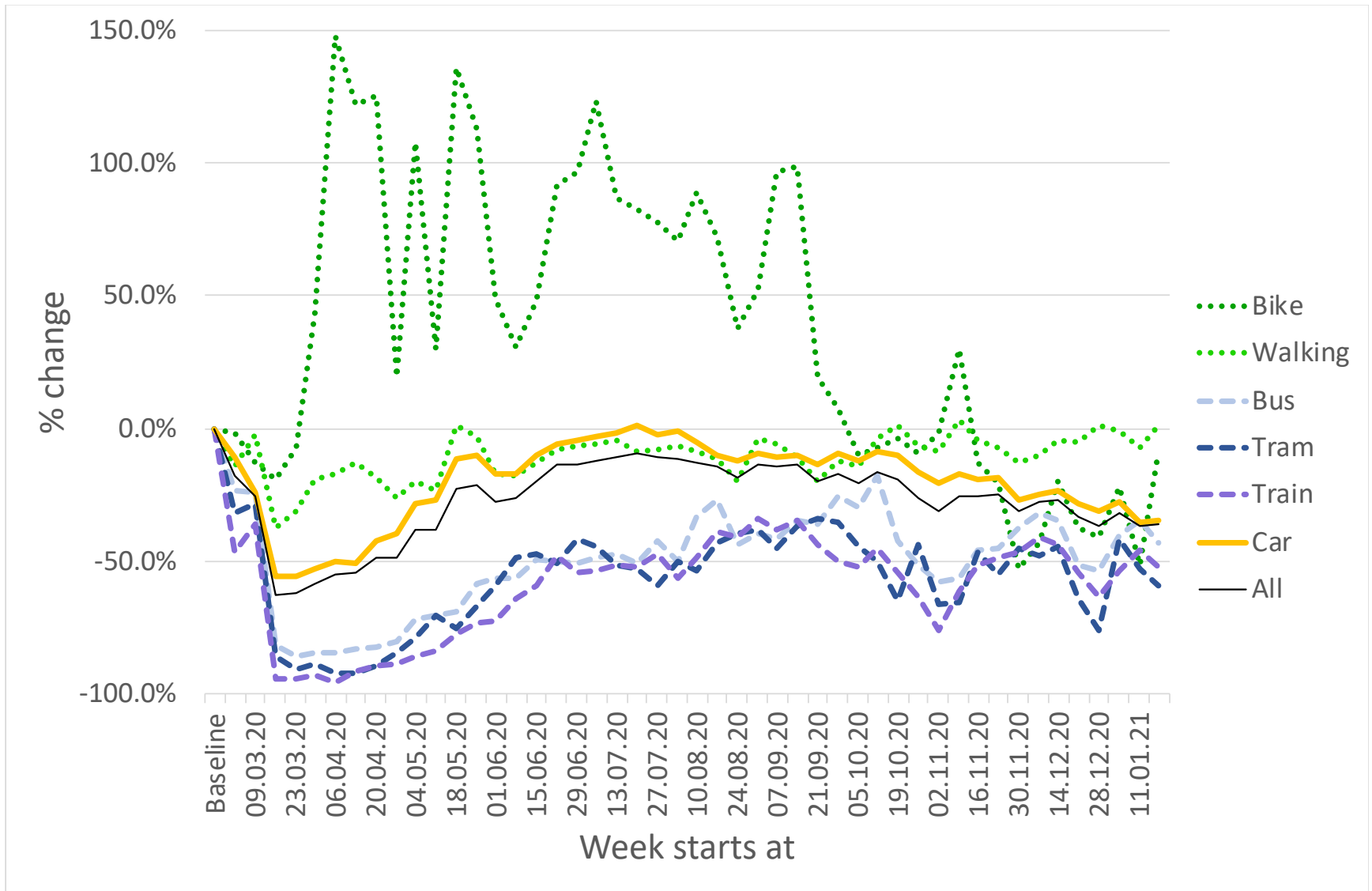
---



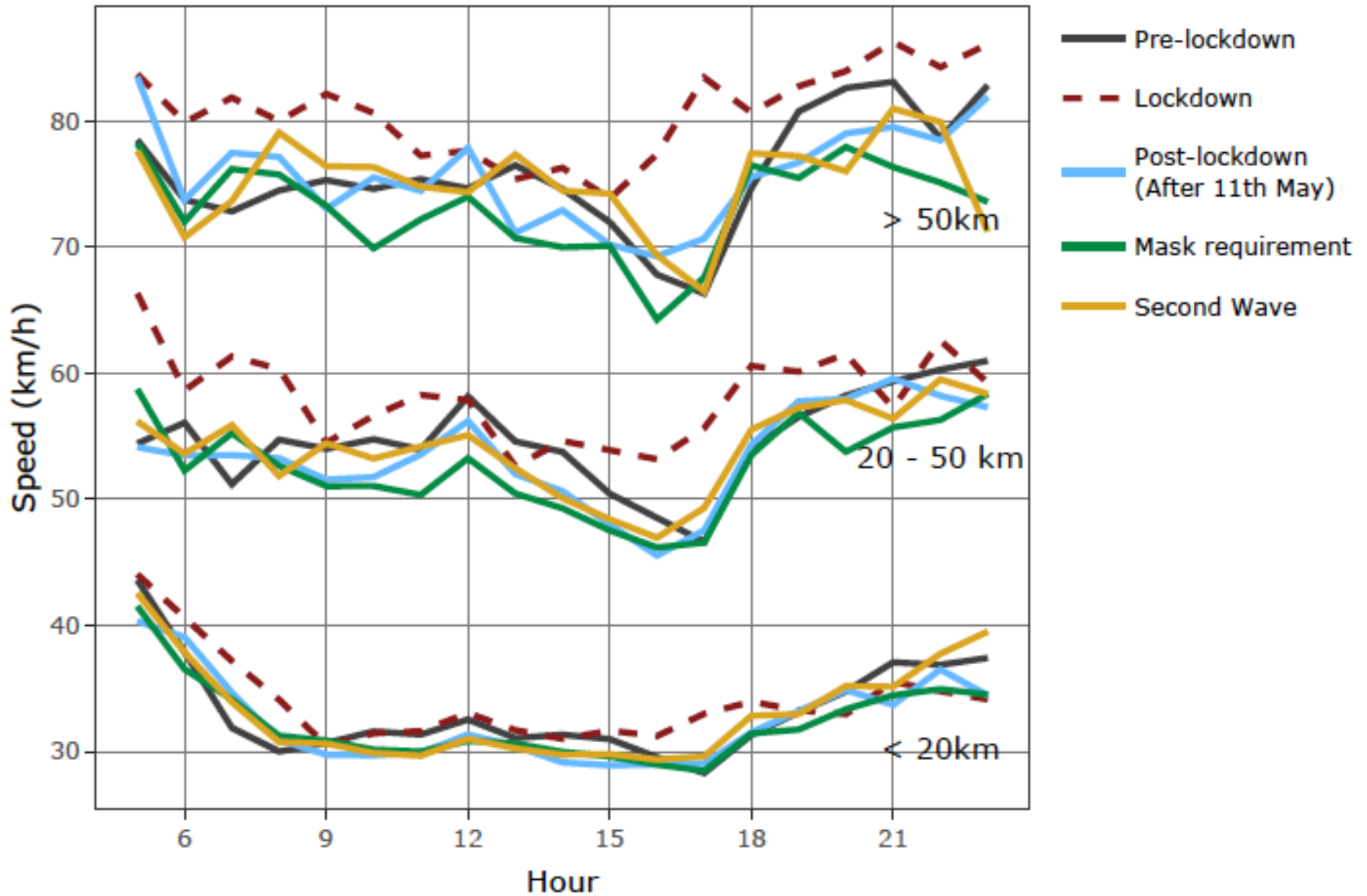
# Working day Pkm by mode and phase of the pandemic



# MOBIS/COVID19: PKm change by mode



# COVID19 door-to-door car speeds



# Dilemma of transport policy and long term changes

---

# Dilemma of transport policy

---

Accessibility ~ Productivity ~ Social welfare

Car accessibility ~ Car ownership ~ 1/Commitment to transit use

Accessibility ~ VMT ~ CO<sub>2</sub> emission for current fleet technology

Accessibility ~ Sprawl ~ VMT

# Challenge of COVID19 for spatial policy making

---

Pandemic threat ~ Sprawl ~ VMT

Pandemic threat ~ WFH ~ VMT without control (reorganisation of time)

Pandemic threat ~ WFH ~ 1/productivity without household reallocation of tasks

Sprawl and WFH ~ 1/commitment to transit use ~ congestion

Sprawl ~ 1/spatial equity

# Questions ?

---

**[ivtmobis.ethz.ch/mobis/covid19/](https://ivtmobis.ethz.ch/mobis/covid19/)**

**[www.ivt.ethz.ch](https://www.ivt.ethz.ch)**