

A microsatellite based method for quantification of fungi in decomposing plant material elucidates the role of *Fusarium graminearum* DON production in the saprophytic competition with *Trichoderma atroviride* in maize tissue microcosms

Journal Article**Author(s):**

Naef, Andreas; Senatore, Mauro; Défago, Geneviève

Publication date:

2006

Permanent link:

<https://doi.org/10.3929/ethz-b-000000497>

Rights / license:

[In Copyright - Non-Commercial Use Permitted](#)

Originally published in:

FEMS Microbiology Ecology 55(2), <https://doi.org/10.1111/j.1574-6941.2005.00023.x>

A microsatellite based method for quantification of fungi in decomposing plant material elucidates the role of *Fusarium graminearum* DON production in the saprophytic competition with *Trichoderma atroviride* in maize tissue microcosms

Andreas Naef, Mauro Senatore & Geneviève Défago

Institute of Plant Sciences, Phytopathology group, Swiss Federal Institute of Technology, Zurich, Switzerland

Correspondence: Geneviève Défago, Phytopathology Group, Institute of Plant Sciences, Swiss Federal Institute of Technology, Universitätstrasse 2, CH-8092 Zurich, Switzerland. Tel.: +41 44 6323869; fax: +41 44 63215 72; e-mail: genevieve.defago@ipw.agrl.ethz.ch

Received 23 May 2005; revised 13 July 2005; accepted 7 August 2005.
First published online 6 October 2005.

doi:10.1111/j.1574-6941.2005.00023.x

Editor: Paul Rainey

Keywords

biological control; competitive PCR; deoxynivalenol; microsatellite; *Fusarium*; *Trichoderma*.

Abstract

Common PCR assays for quantification of fungi in living plants cannot be used to study saprophytic colonization of fungi because plant decomposition releases PCR-inhibiting substances and saprophytes degrade the plant DNA which could serve as internal standard. The microsatellite PCR assays presented here overcome these problems by spiking samples prior to DNA extraction with mycelium of a reference strain. PCR with fluorescent primers co-amplifies microsatellite fragments of different length from target and reference strains. These fragments were separated in a capillary sequencer with fluorescence detection. The target/reference ratio of fluorescence signal was used to calculate target biomass in the sample. Such PCR assays were developed for the mycotoxin deoxynivalenol (DON)-producing wheat and maize pathogen *Fusarium graminearum* and the biocontrol agent *Trichoderma atroviride*, using new microsatellite markers. In contrast to real-time PCR assays, the novel PCR assays showed reliable fungal biomass quantification in samples with differentially decomposed plant tissue. The PCR assays were used to quantify the two fungi after competitive colonization of autoclaved maize leaf tissue in microcosms. Using a DON-producing *F. graminearum* wild-type strain and its nontoxigenic mutant we found no evidence for a role of DON production in *F. graminearum* defense against *T. atroviride*. The presence of *T. atroviride* resulted in a 36% lower wild-type DON production per biomass.

Introduction

Fusarium head blight of small grain cereals is a re-emerging disease in many cereal growing regions around the world (McMullen *et al.*, 1997). One of the predominant species associated with *Fusarium* head blight is *Fusarium graminearum* Schwabe [teleomorph *Gibberella zeae* (Schwabe Petch), (Bottalico & Perrone, 2002)]. Many isolates of *F. graminearum* have been found to produce the mycotoxin deoxynivalenol (DON) (Bottalico & Perrone, 2002), which is commonly found in barley, maize, rye, wheat and mixed feed (Bennett & Klich, 2003). *Fusarium graminearum* survives on decomposing plant material present after crop harvest, particularly from maize (Windels & Kommedahl, 1984; Dill-Macky & Jones, 2000), which serves as inoculum source for subsequent crops, e.g. wheat (Sutton, 1982).

Trichoderma spp. aggressively colonize crop residues of maize and wheat throughout the decomposition process (Broder & Wagner, 1988). They have been used successfully for biological control of a wide range of soil and residue borne plant pathogens (Hjeljord & Tronsmo, 1998). Inoculation of wheat and black oat straw with *Trichoderma* resulted in a reduced *F. graminearum* incidence (Fernandez, 1992), making *Trichoderma* a promising candidate to control the survival of *F. graminearum* on crop residues. However, a recent study has shown that the mycotoxin deoxynivalenol (DON) down-regulates the *nag1* chitinase gene, which may be involved in the biocontrol activity of *Trichoderma atroviride* Karsten strain P1 (Lutz *et al.*, 2003) (teleomorph = *Hypocrea atroviridis*, Dodd *et al.*, 2003), suggesting that DON production plays a role in the defense of *F. graminearum* against this antagonist. To establish a

Trichoderma mediated disease control, the role of DON production will have to be determined.

To investigate this factor in the interaction between *Trichoderma* and *Fusarium*, a method for biomass quantification of each fungus is needed, in addition to the already established DON quantification with ELISA (Lutz *et al.*, 2003). PCR assays that have been developed to quantify toxigenic *Fusarium* in infected plant parts (competitive PCR, Nicholson *et al.*, 1998; Edwards *et al.*, 2001 and real-time PCR, Schnerr *et al.*, 2001; Bluhm *et al.*, 2004; Reischer *et al.*, 2004; Waalwijk *et al.*, 2004) are not suitable for studying saprophytic competition among fungi on plant tissue because they assume constant efficiency of target DNA extraction and PCR amplification. This is inappropriate for plant material colonized by saprophytes because the decomposition process releases substances that inhibit PCR amplification (Wilson, 1997). Coamplification of specific plant DNA sequences (Winton *et al.*, 2002) cannot serve as an internal standard for PCR inhibition because plant DNA is degraded by saprophytes. Furthermore, the assumption of constant DNA extraction efficiency is questionable in samples with changing composition. Normalization of total DNA, a common approach to standardize variability in DNA extraction (Nicholson *et al.*, 1998; Edwards *et al.*, 2001), is inapplicable because plant DNA declines. In all competitive PCR assays, added DNA is used as internal standard for inhibitory effects in PCR amplification (Nicholson *et al.*, 1998; Edwards *et al.*, 2001), but these assays still lack a standard for variation in the DNA extraction because the artificially constructed competitor DNA is added after DNA extraction.

The novel method presented here is based on PCR of a microsatellite. Microsatellites are composed of simple sequence repeats found in all eukaryotic organisms (Li *et al.*, 2002). For the development of microsatellite markers, sequences with simple sequence repeats must be identified in a genome database or a repeat-enriched clone library. Specific primers are then designed on flanking regions of the repeats. Many microsatellites contain a variable number of repeats in different individuals, resulting in length polymorphism of the amplified fragment commonly used in population genetic studies (Tenzer *et al.*, 1999) but in our case, for a competitive PCR.

The aim of this study was to develop a robust method for quantification of fungi in samples with decomposing plant material. The PCR assays presented here for the DON-producing plant pathogen *F. graminearum* and the biocontrol agent *T. atroviride* are based on spiking samples with mycelium of a closely related reference strain and competitive amplification of differently sized microsatellite alleles. These assays make it possible to investigate the role of *F. graminearum* DON biosynthesis in the colonization of sterilized maize leaf tissue in competition with the biocontrol agent *T. atroviride*.

Materials and methods

Fungal strains and culture conditions

Trichoderma atroviride strain P1 is an isolate from wood chips and was classified for a long time as *Trichoderma harzianum* ATCC 74058 based on morphological features. However, DNA sequence analysis has shown that it is more closely related with *T. atroviride* (Kullnig *et al.*, 2001). *Trichoderma harzianum* strain RAC616 is a Swiss isolate and was used as reference in the PCR assay. *Trichoderma* strains were stored as a spore suspension in 20% (v/v) glycerol at -20°C . *Fusarium graminearum* strain GZ3639 was isolated from scab-infected wheat in the midwest United States (Proctor *et al.*, 1995). *Fusarium graminearum* strain GZT40 is a derivative of GZ3639 that contains the transformation vector pGZTS4-, which disrupts the *tri5* gene and eliminates DON production (Proctor *et al.*, 1995). *Fusarium graminearum* strain 9701 is a Swiss isolate from wheat and was used as reference in the PCR assay. *Fusarium graminearum* strains were stored on 1.5% malt extract (Oxoid, Hampshire, UK) agar slants at 3°C . For mycelium production, *Trichoderma* strains were grown for 7 days in 250 mL 1/5 PDB [4.8 g potato dextrose broth (Difco, Detroit, MI, USA), pH 6.5] on a shaker at 180 r.p.m. at 24°C in darkness. *Fusarium* strains were grown under the same conditions in 1.5% malt extract (Oxoid). For inoculation of experiments, the fungi were grown for 5 days on agar plates [12 g agar (Oxoid)] with the same media at 24°C in darkness.

Development of microsatellites

A sequence database (Syngenta, Torrey Mesa Research Institute, San Diego, CA) of the *F. graminearum* genome was screened for simple sequence repeats. Oligonucleotide primers for PCR amplification were designed on the flanking regions of repeats with the online service 'Primer3' (Rozen & Skaletsky, 2000). Specificity and length polymorphism were tested with DNA of closely related and other organisms (Table 1). Because of high costs of fluorescent primer construction, primer screening was performed with $[\gamma\text{-}^{33}\text{P}]\text{ATP}$ -labeled forward primer (Amersham Biosciences, Uppsala, Sweden) under conditions as described by Tenzer *et al.* (1999). PCR products were analyzed on a 6% denaturing acrylamide gel (National Diagnostic, Atlanta, GA) and visualized with an X-ray film [X-Omat AR (Eastman Kodak Company, Rochester, NY)]. To find simple sequence repeats in the genome of *T. atroviride*, two repeat enriched clone libraries (with TG and TC repeats) were constructed with genomic DNA of strain P1 using a previously described protocol (Tenzer *et al.*, 1999). Clones with repeat inserts were identified with a Southern dot blot

Table 1. Characteristics, specificity, and alleles of microsatellites used in this study

	<i>Fusarium graminearum</i> microsatellite, MS-Fg103	<i>Trichoderma atroviride</i> microsatellite, MS-Ta4
Sequence primer fwd	5'-GGTATCCGTACAACCCGATG-3'	5'-ATCTGGCACTGCTTGGTAGG-3'
Sequence primer rev	5'-TTCTTTGATTGGACCGAGG-3'	5'-TCGATCGCCTTCGATTAGG-3'
Repeats	TG	TC
Source	Sequence database*	Enriched clone library for TC repeats
Alleles (bp) in different organisms:		
<i>Fusarium graminearum</i> (20 strains)	225, 227, 229 [†] , 233, 235, 237, 241 , 257, 263	No amplification
<i>Fusarium culmorum</i> (20 strains)	221	No amplification
<i>Fusarium crookwellense</i> (five strains)	219	Not determined
<i>Fusarium sambucinum</i> (one strain)	267	Not determined
<i>Fusarium acuminatum</i> (three strains)	No amplification	Not determined
<i>Fusarium avenaceum</i> (three strains)	No amplification	Not determined
<i>Fusarium poae</i> (two strains)	No amplification	Not determined
<i>Fusarium verticilloides</i> (three strains)	No amplification	Not determined
<i>Fusarium oxysporum</i> (two strains)	No amplification	Not determined
<i>Trichoderma atroviride</i> (one strain)	No amplification	132
<i>Trichoderma harzianum</i> (four strains)	No amplification	132, 142
<i>Trichoderma album</i> (three strains)	Not determined	132
<i>Microdochium nivale</i> D54	No amplification	No amplification
<i>Pseudomonas fluorescens</i> CHA0	No amplification	No amplification
Maize (two varieties)	No amplification	No amplification

*The microsatellite marker MS-Fg103 was derived from the *F. graminearum* genome database of the Torrey Mesa Research Institute, San Diego, CA (Syngenta). The sequence was also found in contig 1.224 of the genome sequence of *Gibberella zeae* strain PH-1 deposited in GenBank with accession number AACM01000224.

[†]Alleles in bold face were used in the competitive microsatellite PCR assays.

(Tenzer *et al.*, 1999) and sequenced with M13 universal primers by Synergene Biotech GmbH (Zurich, Switzerland). Primer design and test PCRs were performed as described above for *F. graminearum*.

Preparation of samples and DNA extraction

Samples of microcosm experiments were freeze dried and weighted in 2 mL reaction tubes using a microbalance accurate to 0.01 mg. To each sample, 2.5 mg freeze-dried mycelium of *F. graminearum* strain 9701 and 2.5 mg freeze-dried mycelium of *T. harzianum* strain RAC616 were added. Samples were then homogenized with glass balls in a Fastprep FP120 machine (Savant, Holbrook, NY) for 30 s at maximum level. DNA was extracted with the DNeasy Plant mini kit following the protocol of the manufacturer (Qiagen, Hilden, Germany) except for a 50% increase of the cell lysis buffer volume and adaptation of the volumes in subsequent steps.

Competitive microsatellite PCR and fragment analysis

PCR with microsatellite MS-Fg103 or MS-Ta4 was performed in a 10 μ L volume containing 5 μ L of 1:50 diluted DNA extract, 1 \times reaction buffer (Amersham Biosciences), 0.1 mM of each dNTP, 0.2 μ M of forward and reverse primer

(Table 1), and 1 U of *Taq* polymerase (New England BioLabs, Beverly, MA). One quarter of the forward primer was dye-labeled [Beckman D4 dye for MS-Ta4, Beckman D3 dye for MS-Fg103 (Beckman-Coulter, Fullerton, CA)]. PCR was carried out in a T1-Thermoblock (Biometra, Göttingen, Germany) under the following conditions: 5 min at 94 °C for denaturation, 35 cycles of 30 s at 94 °C, 30 s at 60 °C, and 60 s at 72 °C, with a final extension of 10 min at 72 °C. For each sample, 1.5 μ L MS-Ta4 PCR product and 3 μ L of MS-Fg103 PCR product were pooled in 20 μ L deionized water. After purification with Sephadex G-50 (Amersham Biosciences), 1 μ L of the CEQ DNA size standard 400 (Beckman-Coulter) was added. DNA fragments were separated by capillary electrophoresis and detected with laser-induced fluorescence in a CEQ 2000XL DNA analysis system (Beckman-Coulter), and analyzed with the software provided by Beckman-Coulter (version 4.2.0). The average peak height ratio from two replicate PCR assays was used to calculate the target/reference PCR products ratio for each microsatellite.

Calibration of competitive PCR assays

For each PCR assay, external standards were prepared in triplicate. Freeze-dried mycelia of the target strains (*F. graminearum* GZ3639 and *T. atroviride* P1) were mixed with freeze-dried mycelium of the reference strains (*F. graminearum* 9701 and *T. harzianum* RAC616) in ratios of 1:8, 1:4,

1 : 2, 1 : 1, 2 : 1, 4 : 1 and 1 : 8 in a total of 30 mg weight. DNA extraction and competitive microsatellite PCR were done as described above. The measured target/reference PCR products ratio was displayed on a logarithmic scale against the known mycelium ratio. A linear regression was performed on the data points from MS-Fg103 and MS-Ta4, respectively, with the program SYSTAT, version 10 (Systat Inc., Evanston, IL).

Comparison with real-time PCR

Six mg freeze-dried mycelium of *F. graminearum* GZ3639 or *T. atroviride* P1 were mixed with 24 mg nontarget material composed of autoclaved maize leaves, air-dried maize leaves, lyophilized mycelium of the other fungus (*T. atroviride* P1 or *F. graminearum* GZ3639), or nonsterile maize stalks collected in spring from the soil surface. Three replicates of each mixture and three replicates of 6 mg pure mycelium were spiked with reference mycelium and assayed in separate competitive microsatellite PCR assays. Three identical replicates were analyzed with real-time PCR using our new microsatellite primers (Table 1) and the DNA binding dye SYBR[®]Green. For these assays, DNA was extracted without prior addition of reference mycelium and DNA was quantified in triplicates of 1 : 100 diluted extracts with PicoGreen[®] (Molecular Probes Europe, Leiden, the Netherlands) according to the manufacturer's recommendations using a SPECTRAFluor Plus instrument (Tecan, Männedorf, Switzerland). Real-time PCR was performed in a 15 µL volume containing 5 µL of 1 : 100 diluted DNA extract, 1 × SYBR[®]Green PCR Master Mix (Applied Biosystems, Foster City, CA, USA), 0.2 µM of forward and reverse primers. Cycling was done in an ABI Prism 7700 apparatus (Applied Biosystems) under the same conditions as described for the competitive microsatellite PCR. The replicates were quantified in separate real-time PCR assays. A serial dilution (1 : 50, 1 : 100, 1 : 200, 1 : 400, and 1 : 800) of the DNA extracts from 6 mg pure mycelium of *F. graminearum* GZ3639 and *T. atroviride* P1 was included for calibration of each assay. Fisher's LSD test (SYSTAT) was used to compare the means of the recovered biomass from different mixtures and the means of DNA yield from mixtures without reference mycelium.

Role of *Fusarium graminearum* DON production in interaction with the antagonist *Trichoderma atroviride*

The early maturing maize hybrid Fuxxol (RAGT Semences, Rodez, France) was grown on an experimental field of Agroscope FAL Reckenholz (Zurich, Switzerland) in 2003. At tasseling stage, the 5th leaf from the top was collected from 20 randomly selected maize plants. From each leaf, six

rectangular pieces (76 × 26 mm) were cut. The leaf pieces were stored at -20 °C until use. For each experiment, 30 leaf pieces were placed on microscopy slides with the adaxial side down. Each leaf piece was fixed on the short sides with stainless paper clips and put on wetted filter-paper in a glass Petri dish and autoclaved at 120 °C for 20 min. Test trials with nonsterile leaves have shown that the natural microflora varies among leaf pieces, which affected the growth of our target fungi. Autoclaving was performed to obtain reproducible results, although the sterilization could have an effect on the interaction between the inoculated fungi. Pieces from one leaf were assigned randomly to one of the following treatments:

- 1 *T. atroviride* P1
- 2 *F. graminearum* GZ3639
- 3 *F. graminearum* GZT40
- 4 *T. atroviride* P1 and *F. graminearum* GZ3639
- 5 *T. atroviride* P1 and *F. graminearum* GZT40
- 6 No inoculation.

For treatments 4 and 5, pieces of agar (8 × 4 mm) from plates with actively growing *T. atroviride* and *F. graminearum* were placed inverted at opposite sides of the leaf piece (5 cm from each other). For treatments 1–3, only one agar plug was placed at the same place on the leaf piece. After 10 days of growth at 24 °C in 100% humidity in the dark, the centre square of the leaf piece was cut out and transferred to a 2 mL reaction tube. For determination of DON content, 1 mL of sterile distilled water was added to each tube. After the tubes were shaken horizontally for 2 h at 200 r.p.m., they were centrifuged for 2 min at maximum speed in a microcentrifuge. DON levels were quantified in the supernatant using ELISA as described below. The samples with the remaining supernatant were frozen at -80 °C and freeze dried. Fungal biomasses were quantified with competitive microsatellite PCR as described above using microsatellite MS-Fg103 for *F. graminearum* strains and microsatellite MS-Ta4 for *T. atroviride* P1. DON production by *F. graminearum* was calculated for individual microcosms relative to the biomass of the *F. graminearum* strain. Data from three trials with six replicates each were pooled after no significant trial × treatment interaction was determined in a preliminary GLM analysis ($P=0.944$ for *F. graminearum* biomass, $P=0.242$ for *T. atroviride* biomass, $P=0.272$ for DON levels, and $P=0.223$ for DON production) (SYSTAT). Means were compared with Fisher's LSD test.

DON quantification

DON levels were quantified in 50 µL of a 1 : 10 dilution of the aqueous sample extracts (see above) using a commercial enzyme-linked immunosorbent assay [Ridascreen Fast DON (R-Biopharm, Darmstadt, Germany)]. If necessary, the extracts were further diluted to fall into the range of

calibrators and measured again. The test detects DON and 3-acetyl DON with equal sensitivity down to $0.2 \mu\text{g g}^{-1}$ and has negligible cross reactivity with DON-related substances such as nivalenol, 15-acetyl-DON, triacetyl-DON, triacetyl-nivalenol, tetra-acetyl-DON, and fusarenol X.

Results and discussion

Microsatellites

Screening of a genome database of *Fusarium graminearum* available through the Torrey Mesa Research Institute (Syngenta) revealed more than 200 loci with simple sequence repeats (SSR). Primers were designed on the flanking regions of 21 sequences containing more than seven repeats. The primer pair MS-Fg103 was selected because it amplified a single DNA fragment of variable length without considerable stutter (Fig. 1). Stutter fragments are characteristic for microsatellites and result from DNA polymerase slippage on simple sequence repeats (Daniels *et al.*, 1998). Amplification of a single allele occurred with DNA of all tested strains of the haploid fungus *F. graminearum* and the closely related species *Fusarium culmorum*, *Fusarium crookwellense* and *Fusarium sambucinum* from the section *Discolor* but not with DNA of *Fusarium* strains from other sections or any other organism tested (Table 1). Of 12 alleles identified, two were used in the quantitative PCR assay: the allele 241 bp (19 TC repeats), which is present in the trial strain *F. graminearum* GZ3639, and the allele 229 bp (13 TC repeats), which is present in the reference strain *F. graminearum* 9701. The microsatellite MS-Ta4 was developed from the repeat enriched genomic libraries of *Trichoderma atroviride* P1. All of

the 31 sequenced clones (17 from the TG library and 12 from the TC library) contained SSRs but some inserts were identical. In some other clones, the SSRs were too close to the cloning site to design PCR primers. Finally, eight primers were designed on sequences containing more than 10 repeats. The primer pair MS-Ta4 was selected because it generates a DNA fragment with little stutter (Fig. 1) of either 132 or 142 bp for *Trichoderma* strains only (Table 1). The allele of 132 bp (13 TG repeats) is present in *T. atroviride* P1, which was used in the microcosm experiments, and the allele 142 bp (18 TG repeats) is present in *T. harzianum* RAC616, which serves as reference in the PCR assay.

Competitive microsatellite PCR

To test the use of microsatellites MS-Fg103 and MS-Ta4 for a competitive PCR, DNA was extracted from mycelium mixtures of a trial and a reference strain. A capillary sequencer was used to separate and quantify the fluorescently labeled, differently sized PCR products (Fig. 1). We found a linear correlation between biomass ratio of *F. graminearum* strains GZ3639 and 9701 and their MS-Fg103 PCR product ratio ($R^2 = 0.997$, $P < 0.001$, Fig. 2) and also a linear correlation between the biomass ratio of *T. atroviride* P1 and *T. harzianum* RAC616 and their MS-Ta4 PCR product ratio ($R^2 = 0.995$, $P < 0.001$, Fig. 2). These correlations were used for the development of competitive PCR assays for the quantification of the trial strains *F. graminearum* GZ3639 and *T. atroviride* P1. Freeze-dried samples were spiked with freeze-dried mycelium of the closely related reference strains *F. graminearum* 9701 and *T. harzianum* RAC616, respectively. The biomass of trial strains was calculated from the PCR product ratio using the linear regression equations from standard mixtures and the known amount of reference biomass. Since a mutation in the DON synthetic pathway does not affect the microsatellite site, the MS-Fg103 PCR assay could also be used to quantify the *F. graminearum* strain GZT40 with interrupted DON synthesis (Proctor *et al.*, 1995).

To our knowledge, a microsatellite locus has never been used for the development of a quantitative competitive PCR assay. Given the natural length polymorphism of these markers it was not necessary to construct an artificial competitor as in common competitive PCR. Instead, the differently sized microsatellite DNA of a closely related reference strain serves as competitor. As this competitor was added as mycelium before DNA extraction, it also works as an internal standard for variation in DNA extraction.

However, the microsatellites and the reference strains must be carefully selected because, firstly, microsatellites often generate stutter peaks that can mask other alleles and, secondly, shorter alleles can be preferentially amplified (Daniels *et al.*, 1998). In our PCR assays, these drawbacks

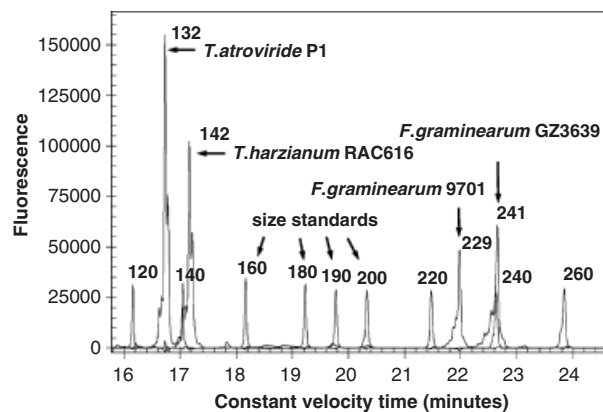


Fig. 1. Microsatellite PCR product analysis from a sample containing DNA of four fungal strains using a sequencer with capillary electrophoresis and laser-induced fluorescence detection. Peaks of *Trichoderma* strains represent the product of a competitive PCR with microsatellite MS-Ta4 and those of *Fusarium* strains represent products of a competitive PCR with microsatellite MS-Fg103. The two PCRs were done individually and pooled for fragment analysis.

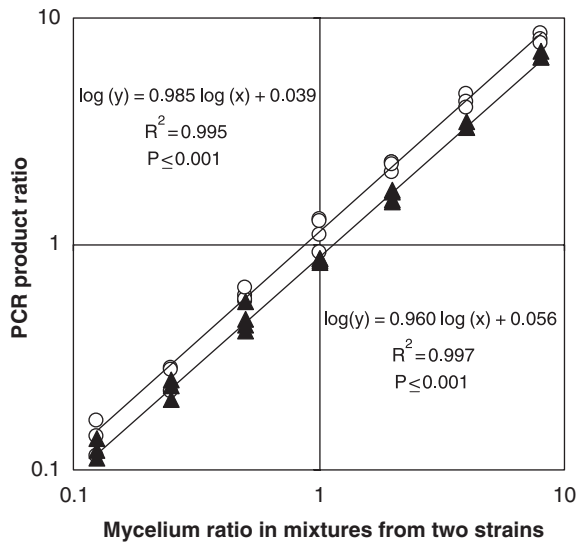


Fig. 2. Standard curves for the quantification of *Fusarium graminearum* GZ3639 (▲) and *Trichoderma atroviride* P1 (○) with competitive microsatellite PCR. Lyophilized mycelia of *F. graminearum* GZ3639 and *F. graminearum* 9701 and, correspondingly, mycelia of *T. atroviride* P1 and *T. harzianum* RAC616 were mixed in different ratios each in three replicates. The ratio of strain-specific PCR products is plotted on a logarithmic scale against the ratio of mycelia in standard mixtures. The lower equation describes the linear regression through PCR product ratio of the *Fusarium*-specific microsatellite MS-Fg103 (peak height of GZ3639 divided by peak height of 9701). The upper equation describes the linear regression through PCR product ratio of the *Trichoderma*-specific microsatellite MS-Ta4 (peak height of P1 divided by peak height of RAC616).

were circumvented by selection of microsatellites without considerable stutter and selection of reference strains of similar fragment length. Moreover, a slightly preferential amplification of reference or target allele equally affects the measured target/reference ratio in samples and standard mixtures and therefore is included in the assay calibration. Our PCR assays were designed to monitor two specific strains but they can also be used for other strains of *F. graminearum* or *T. atroviride* or closely related species. For example, the microsatellite MS-Fg103 assay was also used to quantify the biomass of the Swiss *F. culmorum* strain 9713 on maize residues (A. Naef, unpublished data). Our competitive microsatellite PCR could be used to quantify specific strains in field samples (Figs 3a and c) but this application requires preliminary identification of prevalent microsatellite alleles to select a reference strain with distinct allele.

Comparison with real-time PCR

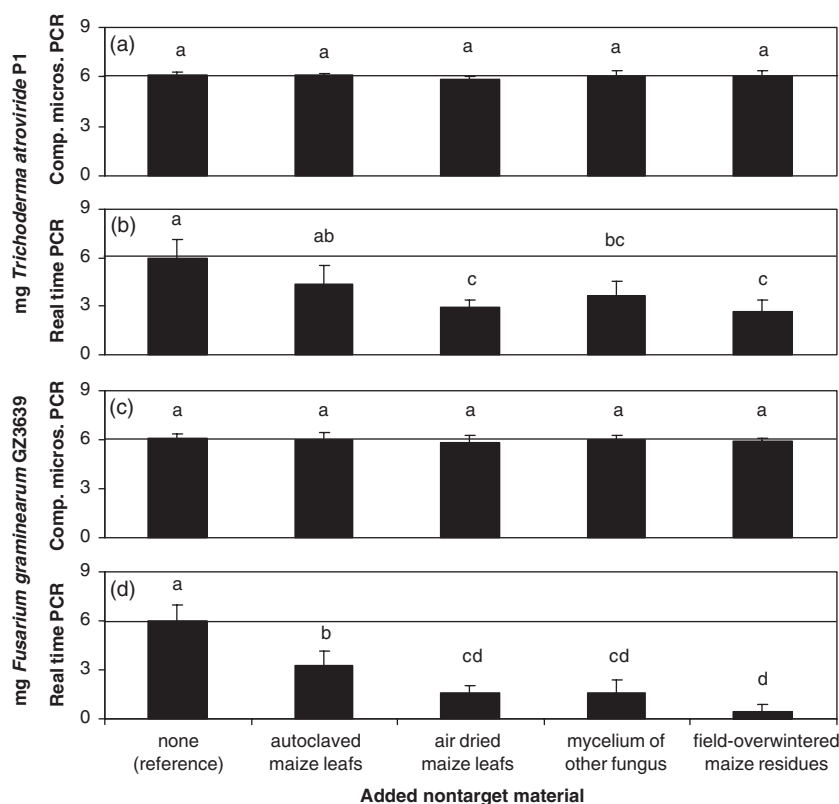
To compare reproducibility and recovery of the novel competitive microsatellite PCR with real-time PCR, a known amount of target biomass was assessed in mixtures

with different nontarget materials. The mixtures for real-time PCR were identical except for the omission of reference spiking. Extracted DNA was quantified with a DNA-binding fluorescent dye from samples without reference mycelium (Table 2). The presence of autoclaved maize leaves and partially decomposed overwintered maize stalks decreased the total DNA yield. This decrease was significant for *F. graminearum* mycelium mixed with partially decomposed maize tissue (Table 2). Addition of air-dried maize leaves and nontarget mycelium increased the total DNA yield. The competitive microsatellite PCR assays for *T. atroviride* P1 and *F. graminearum* GZ3639 were not affected by any nontarget material and recovered completely the target mycelia (Figs 3a and c). Conversely, the real-time PCR assays showed decreased recovery of target mycelia in the presence of nontarget material (Figs 3b and d). Overall variation was lower with the competitive microsatellite PCR (standard error, SE = 0.08 mg with MS-Fg103 and SE = 0.06 mg with MS-Ta4) than with real-time PCR (SE = 0.34 mg with MS-Fg103 and SE = 0.58 mg with MS-Ta4).

Quantitative PCR assays without internal standards such as the real-time assays used, rely on constant extraction and amplification efficiency of target DNA. However, less DNA was extracted from a mixture of *F. graminearum* mycelium with decomposed plant tissue than from mycelium alone (Table 2), suggesting that the extraction efficiency of fungal target DNA is affected by the presence of decomposing plant tissue. The low real-time PCR biomass recovery in the presence of decomposed plant tissue and other nontarget materials (Figs 3b and d) indicates that the amplification efficiency of target DNA was also not constant. The nontarget materials must have released PCR-inhibiting substances that were coextracted with the DNA (Wilson, 1997). Commonly used standardization approaches for PCR quantification of fungi in living plant parts, such as normalization of total DNA concentration before PCR (Nicholson *et al.*, 1998; Edwards *et al.*, 2001) or coamplification of plant DNA sequences (Winton *et al.*, 2002), assume a constant amount of extractable plant DNA. In samples with decomposing plant material, this assumption is compromised by the degradation of plant DNA. Our novel PCR assays use the DNA of a spiked reference strain as internal standard for variation in DNA extraction and variation in PCR amplification and therefore are not affected by the variable DNA content and the presence of PCR inhibitors in decomposing plant material such as field-overwintered maize residues.

The range of quantification with our PCR assays depends on the amount of spiked reference mycelium and therefore is limited by the range of accurate weighing. With our equipment and the described external and internal standards, it was possible to accurately quantify fungal biomass

Fig. 3. Influence of 24 mg of different nontarget material on the detection of 6 mg fungal mycelium by quantitative PCR assays. *Trichoderma atroviride* P1 was quantified with *Trichoderma*-specific primers of the microsatellite MS-Ta4 using competitive microsatellite PCR (a) and using real-time PCR with SYBR[®]Green (b). *Fusarium graminearum* GZ3639 was quantified with *Fusarium*-specific primers of the microsatellite MS-Fg103 using competitive microsatellite PCR (c) and using real-time PCR with SYBR[®]Green (d). Values are means of three replicate mixtures (\pm SD). Bars with different letters above them are significantly different according to Fisher's LSD test ($P \leq 0.05$).



from 0.01 to 0.8 mg (mg dry sample)⁻¹ in samples of approximately 25 mg dry weight. A lower detection range can be achieved by increasing the sample weight with an unaltered amount of spiked reference mycelium. The quantitative range of two orders of magnitude is narrow compared to the five orders of magnitude achieved with real-

time PCR assays (Edwards *et al.*, 2002; McCartney *et al.*, 2003), but our microsatellite-based competitive PCR assays showed a lower variability than real-time PCR assays within the range of interest.

Role of *Fusarium graminearum* DON production in the interaction with the antagonist *Trichoderma atroviride*

The novel PCR assays were used to test whether DON synthesis by *F. graminearum* is involved in the fungal defense against the biocontrol agent *T. atroviride* on autoclaved maize leaf pieces mimicking postharvest maize residues. Preliminary experiments have shown that the natural microflora varies between leaves and leaf pieces, which affected the growth of the two inoculated fungi in microcosms. We autoclaved the maize leaf tissue to obtain reproducible conditions because surface-sterilization could not completely remove the natural microflora. Autoclaving, however, modifies tissue composition, potentially affecting the fungal interaction. *T. atroviride* strain P1 was confronted with either the wild-type *F. graminearum* strain GZ3639 or the insertional mutant GZT40 (Proctor *et al.*, 1995) lacking DON production. We let the antagonists competitively colonize the maize tissue and observed mutual intermingling of mycelia after 5 days of incubation. Fungal biomass

Table 2. Total DNA extracted from 6 mg freeze-dried mycelium of either *Fusarium graminearum* GZ3639 or *Trichoderma atroviride* P1 mixed with 24 mg of different non-target material

Nontarget material	Total DNA yield* (μ g)	
	Mixed with <i>F. graminearum</i> GZ3639	Mixed with <i>T. atroviride</i> P1
None (pure target mycelium)	3.82 \pm 0.70b	2.72 \pm 0.20a
Autoclaved maize leaves	2.47 \pm 1.12ab	2.22 \pm 0.76a
Freeze-dried maize leaves	10.74 \pm 1.89c	8.05 \pm 2.36b
Mycelium of nontarget fungus [†]	15.00 \pm 1.29d	17.26 \pm 1.17c
Field-overwintered maize residues [‡]	1.68 \pm 0.51a	2.22 \pm 0.34a

*Extracted DNA was quantified with the fluorescent DNA stain PicoGreen[®]. Values represent means (\pm standard deviation) of three replicate mixtures. Values within a column followed by different letters are significantly different according to Fisher's LSD test ($P \leq 0.05$).

[†]Nontarget mycelium was from *T. atroviride* P1 and *F. graminearum* GZ3639, respectively.

[‡]Maize stalks from the previous year were collected in spring.

and DON levels were quantified after 10 days (Table 3). The biomasses of the two *F. graminearum* strains were significantly reduced in the presence of *T. atroviride* P1 (15% and 16% reduction of GZ3639 and GZT40, respectively) but the biomass of the biocontrol agent itself was reduced even more (50% and 55% reduction by GZ3639 and GZT40, respectively). None of the biomass differences between microcosms with DON-producing wild-type *F. graminearum* GZ3639 and atoxigenic mutant GZT40 was significant. DON was detected only in microcosms with the wild-type *F. graminearum* GZ3639. The measured concentrations were significantly reduced in the presence of *T. atroviride* P1 (Table 3). The mean DON reduction of 45% exceeded the mean GZ3639 biomass reduction of 15%. Consequently, the mean DON production per biomass of GZ3639 was significantly lower (36%) in joint culture with *T. atroviride* than in solitary culture (Table 3).

Our quantification of fungal biomass showed that DON reduction resulted only in part from a biomass reduction of *F. graminearum*, suggesting that presence of *T. atroviride* P1 affects DON synthesis in *F. graminearum* GZ3639. A previous report of reduced DON levels in agar tube assays with *F. graminearum* and *T. harzianum* (Cooney et al., 2001) could not separate biosynthesis reduction from biomass reduction because fungal biomass was not quantified. An alternative explanation for reduced DON concentrations would be DON degradation by *Trichoderma*, but strain P1 was not able to degrade synthetic DON in malt extract medium (A. Naef, unpublished data), nor could the *T. harzianum* strain used in the tubular bioassays metabolize DON (Cooney et al., 2001). The ability to degrade DON under aerobic conditions generally seems to be rare in the microbial community (Völkl et al., 2004). It remains to be shown whether the repression of DON synthesis is *Tricho-*

derma-mediated or a general phenomenon that results from crowding with any antagonist. If *T. atroviride* actively also reduces DON synthesis in an agricultural setting, this could offer a biocontrol strategy to reduce DON levels in crop residues.

In contrast to our observations, stimulation of *F. graminearum* DON production was reported in the competition with *Fusarium verticillium* or *Fusarium proliferatum* on irradiated maize kernels (Velluti et al., 2001). Fungal biomasses were not quantified in this study, and it is possible that higher DON levels resulted from a stimulated *F. graminearum* growth. However, the authors suggested that DON production is a defense strategy of *F. graminearum*. This hypothesis was further supported by a report of DON-mediated repression of the biocontrol gene *nag1* in *T. atroviride* P1 (Lutz et al., 2003). The encoded Nag1 *N*-acetylglucosaminidase degrades chitin in fungal cell walls and is relevant to biocontrol of fungi (Brunner et al., 2003). Yet, we found no significant differences in the fungal biomasses in the comparison between *F. graminearum* GZT40 with interrupted DON synthesis and wild-type *F. graminearum* strain GZ3639 (Table 3). This indicates that DON production did not provide the wild type with a competitive advantage against *T. atroviride*, although the DON level in the presence of *T. atroviride* (42 ng mg^{-1}) exceeds the levels which Lutz et al. (2003) reported to cause *nag1* gene repression ($1\text{--}5 \text{ ng mg}^{-1}$). Other biocontrol genes in *T. atroviride* P1 which are not affected by the presence of DON, like the endochitinase gene *ech42* (Lutz et al., 2003), may compensate for the loss of one enzyme involved in its biocontrol activity. The low competing ability of *T. atroviride* P1 in our microcosm further suggests that substrate competition is more important than mycoparasitism in the saprophytic interaction between these two fungi.

Table 3. The biomasses of *Trichoderma atroviride* strain P1, *Fusarium graminearum* strain GZ3639 (DON⁺ wild type), or *F. graminearum* strain GZT40 (DON⁻ mutant), the mycotoxin DON content of samples, and the DON production per *F. graminearum* biomass after individual and competitive colonization of maize tissue*

Fungal strain(s)	Fungal biomass [†] (μg per mg sample)		DON content [‡] (ng per mg sample)	DON production [§] (pg per mg <i>F. graminearum</i>)
	<i>T. atroviride</i>	<i>F. graminearum</i>		
<i>F. graminearum</i> DON ⁺ alone		284 ± 9a	76.9 ± 7.3a	279 ± 25a
<i>F. graminearum</i> DON ⁻ alone		297 ± 12a	BDL [¶]	
<i>T. atroviride</i> alone	366 ± 39a		BDL	
<i>T. atroviride</i> and <i>F. graminearum</i> DON ⁺	178 ± 17b	241 ± 15b	42.4 ± 5.6b	179 ± 23b
<i>T. atroviride</i> and <i>F. graminearum</i> DON ⁻	149 ± 16b	250 ± 11b	BDL	

*Agar plugs of the fungi were placed at opposite ends of an autoclaved leaf piece and incubated for 10 days at 24 °C.

[†]Biomass of fungi was measured with competitive microsatellite PCR. Values are means (\pm standard error of mean) of three experiments with six replicates per experiment. Values within a column followed by different letters are significantly different according to Fisher's LSD test ($P \leq 0.05$).

[‡]DON content was measured with quantitative ELISA. Values and statistics as described in [†].

[§]DON production was calculated for each replicate in relation to *F. graminearum* biomass. Values and statistics as described in [†].

[¶]BDL, below detection limit of 0.2 ng per mg sample.

We did not expect such a low competitiveness of *T. atroviride* P1 because *in vitro* tests on malt extract and potato dextrose agar showed faster mycelial growth of *T. atroviride* P1 than of *F. graminearum* GZ3639 at the chosen temperatures (A. Naef, unpublished data). Furthermore, Lutz *et al.* (2003) report no effect of *Fusarium* strains, including GZ3639, on the growth of *T. atroviride* P1 in confrontation assays on malt extract agar. The visual quantification of fungal growth on agar plates (measurement of mycelium area Lutz *et al.*, 2003) that was used is difficult for intermingling fungi and may have misinterpreted their interaction. Furthermore, agar plates and maize tissue differ in many properties that could affect the interaction. Differences in water activity, for example, have been shown to affect the competing abilities of *F. graminearum* and *Trichoderma* (Marin *et al.*, 1998). Our microcosm design and the presented PCR assays offer a system to screen *Trichoderma* spp. for better performance against *F. graminearum* than *T. atroviride* P1. We would point out that our microcosms cannot replace subsequent field trials with maize residues, because discrepancy between *in vitro* tests and the performance in biological control is a common problem and has been reported for *Trichoderma* in the control of wheat seedling blight caused by *F. graminearum* (Dal Bello *et al.*, 2002).

In conclusion, the competitive microsatellite PCR assays presented here allowed reliable biomass quantification of *T. atroviride* and *F. graminearum* in samples which contained a variable amount of DNA and PCR inhibitors, such as air-dried maize leaves and field-overwintered maize residues. Competitive microsatellite PCR could have applications for the quantification of other fungi, particularly under conditions where real-time PCR performs poorly. We used our PCR assays to test the competitive ability of a DON-producing *F. graminearum* and its nontoxigenic mutant against the biocontrol candidate *T. atroviride* in a standardized microcosm with autoclaved maize leaf tissue. As we found no evidence for a recently suggested competitive advantage conferred by *F. graminearum* DON production (Velluti *et al.*, 2001; Lutz *et al.*, 2003), biocontrol application of *Trichoderma* is unlikely to increase selection for toxigenic *F. graminearum* specimens; this needs to be proven under field conditions. In our competition assays, we further observed partially reduced DON production per *F. graminearum* wild-type biomass in the presence of *T. atroviride*. The role of *T. atroviride* in this DON reduction and a potential biocontrol application require further investigation. Although we found no evidence for DON production as a defense strategy against antagonism, one should be careful drawing the conclusion that DON has no relevance in the saprophytic stage of *Fusarium*. DON is a potent inhibitor of eukaryotic protein synthesis (Bennett & Klich, 2003) and toxic to insect cells (Fornelli *et al.*, 2004), so

it may potentially affect any other decomposer of crop residues, including arthropods.

Acknowledgments

We gratefully acknowledge B. Koller (ECOGENICS GmbH, Zurich, Switzerland) for assistance in microsatellite development, A. Paolo (Torrey Mesa Research Institute, Syngenta, San Diego, CA) for identification of simple sequence repeats in the *F. graminearum* genome database, K. O'Donnell (ARS culture collection, USDA) for providing *F. graminearum* strains, M. Lorito for providing the *T. atroviride* strain, M. Maurhofer and P. Ceresini for reading the manuscript. This research was supported by Swiss National Center of Competence in Research (NCCR Plant Survival, Neuchâtel).

References

- Bennett JW & Klich M (2003) Mycotoxins. *Clin Microbiol Rev* **16**: 497–511.
- Bluhm BH, Cousin MA & Woloshuk CP (2004) Multiplex real-time PCR detection of fumonisin-producing and trichothecene-producing groups of *Fusarium* species. *J Food Prot* **67**: 536–543.
- Bottalico A & Perrone G (2002) Toxigenic *Fusarium* species and mycotoxins associated with head blight in small-grain cereals in Europe. *Eur J Plant Pathol* **108**: 611–624.
- Broder MW & Wagner GH (1988) Microbial colonization and decomposition of corn, wheat, and soybean residue. *Soil Sci Soc Am J* **52**: 112–117.
- Brunner K, Peterbauer CK, Mach RL, Lorito M, Zeilinger S & Kubicek CP (2003) The Nag1 *N*-acetylglucosaminidase of *Trichoderma atroviride* is essential for chitinase induction by chitin and of major relevance to biocontrol. *Curr Genet* **43**: 289–295.
- Cooney JM, Lauren DR & di Menna ME (2001) Impact of competitive fungi on trichothecene production by *Fusarium graminearum*. *J Agric Food Chem* **49**: 522–526.
- Dal Bello GM, Monaco CI & Simon MR (2002) Biological control of seedling blight of wheat caused by *Fusarium graminearum* with beneficial rhizosphere microorganisms. *World J Microbiol Biotechnol* **18**: 627–636.
- Daniels J, Holmans P, Williams N, Turic D, McGuffin P, Plomin R & Owen MJ (1998) A simple method for analyzing microsatellite allele image patterns generated from DNA pools and its application to allelic association studies. *Am J Hum Genet* **62**: 1189–1197.
- Dill-Macky R & Jones RK (2000) The effect of previous crop residues and tillage on *Fusarium* head blight of wheat. *Plant Dis* **84**: 71–76.
- Dodd SL, Lieckfeldt E & Samuels GJ (2003) *Hypocrea atroviridis* sp. nov., the teleomorph of *Trichoderma atroviride*. *Mycologia* **95**: 27–40.

- Edwards SG, Pirgozliev SR, Hare MC & Jenkinson P (2001) Quantification of trichothecene-producing *Fusarium* species in harvested grain by competitive PCR to determine efficacies of fungicides against *Fusarium* head blight of winter wheat. *Appl Environ Microbiol* **67**: 1575–1580.
- Edwards SG, O'Callaghan J & Dobson ADW (2002) PCR-based detection and quantification of mycotoxigenic fungi. *Mycol Res* **106**: 1005–1025.
- Fernandez MR (1992) The effect of *Trichoderma harzianum* on fungal pathogens infesting wheat and black oat straw. *Soil Biol Biochem* **24**: 1031–1034.
- Fornelli F, Minervini F & Mule G (2004) Cytotoxicity induced by nivalenol, deoxynivalenol, and fumonisin B₁ in the SF-9 insect cell line. *In Vitro Cell Dev Biol Anim* **40**: 166–171.
- Hjeljord L & Tronsmo A (1998) *Trichoderma* and *Gliocladium* in biological control: an overview. *Enzymes, Biological Control and Commercial Applications, Vol. 2* (Harman GE & Kubicek CP, eds), pp. 129–151. Taylor & Francis, London.
- Kullnig CM, Krupica T, Woo SL, Mach RL, Rey M, Benitez T, Lorito M & Kubicek CP (2001) Confusion abounds over identities of *Trichoderma* biocontrol isolates. *Mycol Res* **105**: 770–772.
- Li YC, Korol AB, Fahima T, Beiles A & Nevo E (2002) Microsatellites: genomic distribution putative functions and mutational mechanisms: a review. *Mol Ecol* **11**: 2453–2465.
- Lutz MP, Feichtinger G, Défago G & Duffy B (2003) Mycotoxigenic *Fusarium* and deoxynivalenol production repress chitinase gene expression in the biocontrol agent *Trichoderma atroviride* P1. *Appl Environ Microbiol* **69**: 3077–3084.
- Marin S, Companys E, Sanchis V, Ramos AJ & Magan N (1998) Effect of water activity and temperature on competing abilities of common maize fungi. *Mycol Res* **102**: 959–964.
- McCartney HA, Foster SJ, Fraaije BA & Ward E (2003) Molecular diagnostics for fungal plant pathogens. *Pest Manag Sci* **59**: 129–142.
- McMullen M, Jones R & Gallenberg D (1997) Scab of wheat and barley: a re-emerging disease of devastating impact. *Plant Dis* **81**: 1340–1348.
- Nicholson P, Simpson DR, Weston G, Rezanoor HN, Lees AK, Parry DW & Joyce D (1998) Detection and quantification of *Fusarium culmorum* and *Fusarium graminearum* in cereals using PCR assays. *Physiol Mol Plant Pathol* **53**: 17–37.
- Proctor RH, Hohn TM & McCormick SP (1995) Reduced virulence of *Gibberella zeae* caused by disruption of a trichothecene toxin biosynthetic gene. *Mol Plant-Microbe Interact* **8**: 593–601.
- Reischer GH, Lemmens M, Farnleitner A, Adler A & Mach RL (2004) Quantification of *Fusarium graminearum* in infected wheat by species specific real-time PCR applying a TaqMan Probe. *J Microbiol Methods* **59**: 141–146.
- Rozen S & Skaletsky HJ (2000) Primer3 on the WWW for general users and for biologist programmers. *Bioinformatics Methods and Protocols: Methods in Molecular Biology* (Krawetz S & Misener S, eds), pp. 365–386. Humana Press, Totowa, NJ, USA.
- Schnerr H, Niessen L & Vogel RF (2001) Real time detection of the *tri5* gene in *Fusarium* species by LightCyclerTM-PCR using SYBR[®]Green I for continuous fluorescence monitoring. *Int J Food Microbiol* **71**: 53–61.
- Sutton JC (1982) Epidemiology of wheat head blight and maize ear rot caused by *Fusarium graminearum*. *Can J Plant Pathol* **4**: 195–209.
- Tenzer I, degli Ivanissevich S, Morgante M & Gessler C (1999) Identification of microsatellite markers and their application to population genetics of *Venturia inaequalis*. *Phytopathology* **89**: 748–753.
- Völk A, Vogler B, Schollenberger M & Karlovsky P (2004) Microbial detoxification of mycotoxin deoxynivalenol. *J Basic Microbiol* **44**: 147–156.
- Velluti A, Marin S, Gonzalez R, Ramos AJ & Sanchis V (2001) Fumonisin B₁, zearalenone and deoxynivalenol production by *Fusarium moniliforme*, *F. proliferatum* and *F. graminearum* in mixed cultures on irradiated maize kernels. *J Sci Food Agric* **81**: 88–94.
- Waalwijk C, van der Heide R, de Vries I, et al. (2004) Quantitative detection of *Fusarium* species in wheat using TaqMan. *Eur J Plant Pathol* **110**: 481–494.
- Wilson IG (1997) Inhibition and facilitation of nucleic acid amplification. *Appl Environ Microbiol* **63**: 3741–3751.
- Windels CE & Kommedahl T (1984) Late-season colonization and survival of *Fusarium graminearum* Group-I in cornstalks in Minnesota. *Plant Dis* **68**: 791–793.
- Winton LM, Stone JK, Watrud LS & Hansen EM (2002) Simultaneous one-tube quantification of host and pathogen DNA with real-time polymerase chain reaction. *Phytopathology* **92**: 112–116.