



# Few-Electron Single and Double Quantum Dots in an In As Two-Dimensional Electron Gas

## Journal Article

### Author(s):

Mittag, Christopher; Koski, Jonne V.; Karalic, Matija; Thomas, Candice; Tuaz, Aymeric; Hatke, Anthony T.; Gardner, Geoffrey C.; Manfra, Michael J.; Danon, Jeroen; [Ihn, Thomas Markus](#) ; [Ensslin, Klaus](#) 

### Publication date:

2021

### Permanent link:

<https://doi.org/10.3929/ethz-b-000498473>

### Rights / license:

[Creative Commons Attribution 4.0 International](#)

### Originally published in:

PRX Quantum 2(1), <https://doi.org/10.1103/PRXQuantum.2.010321>

## Few-Electron Single and Double Quantum Dots in an InAs Two-Dimensional Electron Gas


Christopher Mittag,<sup>1,\*</sup> Jonne V. Koski,<sup>1</sup> Matija Karalic,<sup>1</sup> Candice Thomas<sup>2,3</sup>, Aymeric Tuaz,<sup>2,3</sup> Anthony T. Hatke,<sup>2,3</sup> Geoffrey C. Gardner,<sup>2,3</sup> Michael J. Manfra,<sup>2,3</sup> Jeroen Danon<sup>4</sup>, Thomas Ihn<sup>1</sup>, and Klaus Ensslin<sup>1</sup>

<sup>1</sup>Department of Physics, Solid State Physics Laboratory, ETH Zurich, 8093 Zurich, Switzerland

<sup>2</sup>Microsoft Station Q Purdue and Department of Physics and Astronomy, Purdue University, West Lafayette, Indiana 47907, USA

<sup>3</sup>Birck Nanotechnology Center, Purdue University, West Lafayette, Indiana 47907, USA

<sup>4</sup>Department of Physics, Center for Quantum Spintronics, Norwegian University of Science and Technology, 7491, Trondheim, Norway

 (Received 15 July 2020; revised 24 November 2020; accepted 25 January 2021; published 9 February 2021)

Most proof-of-principle experiments for spin qubits have been performed with GaAs-based quantum dots because of the excellent control they offer over tunneling barriers and the orbital and spin degrees of freedom. Here we present the first realization of high-quality single and double quantum dots hosted in an InAs two-dimensional electron gas, demonstrating accurate control down to the few-electron regime, where we observe a clear Kondo effect and singlet-triplet spin blockade. We measure an electronic  $g$  factor of 16 and a typical magnitude of the random hyperfine fields on the quantum dots of approximately 0.6 mT. We estimate the spin-orbit length in the system to be approximately  $5 - 10 \mu\text{m}$  (which is almost 2 orders of magnitude longer than typically measured in InAs nanostructures), achieved by a very symmetric design of the quantum well. These favorable properties put the InAs two-dimensional electron gas on the map as a compelling host for studying fundamental aspects of spin qubits. Furthermore, having weak spin-orbit coupling in a material with a large Rashba coefficient potentially opens up avenues for engineering structures with spin-orbit coupling that can be controlled locally in space and/or time.

DOI: [10.1103/PRXQuantum.2.010321](https://doi.org/10.1103/PRXQuantum.2.010321)

### I. INTRODUCTION

Electron spins hosted in semiconductor quantum dots are a compelling platform for quantum information processing [1], and two-dimensional electron gases (2DEGs) formed in GaAs/(Al,Ga)As heterostructures have been the workhorse of this field for many years. Because of the excellent gating technologies in this material system, few-electron quantum dots can be routinely realized with occupation control down to the last electron, promising, in principle, good scalability that is compatible with standard fabrication techniques. The main obstacle to further progress in the field of GaAs-based spin qubits is the fast decoherence caused by the hyperfine coupling of the electron spins to the randomly fluctuating nuclear spins in the

host material [2–5]. The fact that this problem is intrinsic for GaAs was one of the reasons for a recent shift of focus toward Si- and Ge-based quantum dots, where the most abundant isotopes have zero nuclear spin. Although progress has been impressive in recent years [6–12], electrons in these materials have an additional valley degree of freedom that is difficult to control and can interfere with qubit operation [13].

An attractive alternative host system for studying fundamental aspects of spin qubits could be the InAs-based 2DEG. Although both In and As carry nonzero nuclear spin, the bulk electronic  $g$  factor in InAs is approximately 30 times larger than in GaAs, yielding much smaller effective nuclear fields for comparable hyperfine coupling and quantum dot dimensions. Apart from that, the small effective mass  $m^* \approx 0.023m_0$  in the conduction band of InAs eases the demands on lithographic precision, coming with the additional advantage that a larger quantum dot size reduces the rms value of the random nuclear fields even further.

The reason why the InAs-based 2DEG has not yet become a leading platform for spin-qubit implementations

\*mittag@phys.ethz.ch

Published by the American Physical Society under the terms of the [Creative Commons Attribution 4.0 International license](https://creativecommons.org/licenses/by/4.0/). Further distribution of this work must maintain attribution to the author(s) and the published article's title, journal citation, and DOI.

is twofold: First, the sidewalls of etched InAs structures usually contain an accumulation layer of electrons, likely caused by Fermi level pinning [14–17]. The traditional mesa etch technique commonly used in GaAs can thus not be applied, as the trivial edge states always short the electron gas underneath the gates traversing the mesa. Second, InAs has a large Rashba spin-orbit coefficient [18,19], which can leverage small asymmetries in the confining potential into strong in-plane spin-orbit coupling. This resulted in a surge in interest in InAs-based devices after it was pointed out that strong spin-orbit interaction in combination with proximity-induced superconductivity could result in a topological state hosting zero-energy Majorana modes at its boundaries [20–23], which potentially could be used for topologically protected quantum computation [24,25]. Most experiments in this field rely on wirelike devices, since they allow superconductors to be more easily coupled to or even epitaxially grown on them [26–28], but a planar setup would enable the application of top-down technology for the fabrication of complex quantum circuits [29]. In the context of spin qubits, however, strong spin-orbit coupling is not necessarily beneficial: although it does allow fast electron dipole spin resonance, in general it reduces qubit coherence and compromises qubit control [30–33].

Here we present the first realization of high-quality single and double quantum dots using a split-gate technology on a planar InAs quantum well, demonstrating electron occupation control down to the last electron and a Kondo effect and spin blockade with qualities comparable to those of the best GaAs-based samples. We circumvent the issue of edge conductance by using multiple layers of electrostatic gates [34] and we suppress the Rashba spin-orbit interaction by covering the InAs well with epitaxial (Al,Ga)Sb barriers, yielding a very symmetric electric field across the quantum well [35]. We report a  $g$  factor of approximately 16 and a rms value of approximately 0.6 mT for the random hyperfine fields on the quantum dots, which is roughly 1 order of magnitude smaller than the typical fields in GaAs-based quantum dots [36,37]. We further estimate the spin-orbit length  $l_{SO}$  in our 2DEG in two independent ways, showing that  $l_{SO} \sim 5 - 10 \mu\text{m}$ , which is of the same order of magnitude as in typical GaAs devices [38]. This is unusually long for a lower-dimensional InAs-based structure and indicates that the Rashba contribution is strongly suppressed.

The implications for the field of quantum technologies are manifold. First of all, we put the InAs 2DEG on the map as a new compelling platform for quantum-dot-based spin-qubit implementations, having the aforementioned benefits of a larger  $g$  factor and smaller effective mass as compared with the commonly used GaAs. The discovery that our symmetric heterostructure design indeed leads to an almost complete suppression of the Rashba effect removes most of the spin-orbit-related

decoherence and spin-mixing mechanisms, which in practice were considered to be intrinsic features in InAs-based devices.

Secondly, having a 2DEG with weak spin-orbit coupling in a material with a large Rashba coefficient presents conceptually a plethora of new possibilities. In such a material, gate-induced electric fields are capable of generating strong spin-orbit interaction locally in space and/or time. In the context of spin qubits, one could thus imagine using a stacked-gate technology to switch on and off spin-orbit interaction locally on a quantum dot: Switching it on allows fast spin manipulation and switching it off could result in a long coherence time, thereby combining the best of the two worlds of strong and weak spin-orbit coupling. Furthermore, adding the ingredient of induced superconductivity to a 2DEG with a gate-designable spin-orbit landscape could yield a convenient platform for creating and braiding Majorana bound states.

The rest of this paper is outlined as follows. We begin by introducing the details of the heterostructure, the device, and its fabrication. In the next section, we form and characterize a single few-electron quantum dot. In an in-plane magnetic field we identify the spin of electronic states from the energy shift of the resonances visible in finite-bias spectroscopy and analyze the spin-orbit interaction on the basis of the crossing of spin singlet and spin triplet states. Completing the experiments on the single quantum dot, we increase the tunnel coupling to the leads and observe the Kondo effect in the single-electron regime; its dependences on bias voltage, magnetic field, and temperature are analyzed. The next section comprises experiments on the coupling of two neighboring quantum dots to form a double quantum dot. Singlet-triplet spin blockade by Pauli exclusion is observed and characterized. Studying the leakage current at strong interdot tunnel coupling allows us to estimate the strength of the spin-orbit interaction, showing that it is much weaker than reported for other InAs-based devices. Finally, we reduce the interdot tunnel coupling and use the narrow resonance in the leakage current around zero magnetic field to estimate the typical magnitude of the nuclear fields on the two quantum dots.

## II. DEVICE DETAILS

The heterostructure used in this experiment is grown by molecular beam epitaxy on an undoped GaSb substrate wafer in (100) crystal orientation. The main layers of importance for this work can be seen in the schematic cross section in Fig. 1(a). They comprise a 24-nm-wide InAs quantum well [lower blue layer in Fig. 1(a)] sandwiched between two 20-nm-wide  $\text{Al}_{0.8}\text{Ga}_{0.2}\text{Sb}$  barriers (red) and capped with a 1.5-nm InAs layer (upper blue layer). The quantum well hosts a 2DEG with mobility  $\mu =$

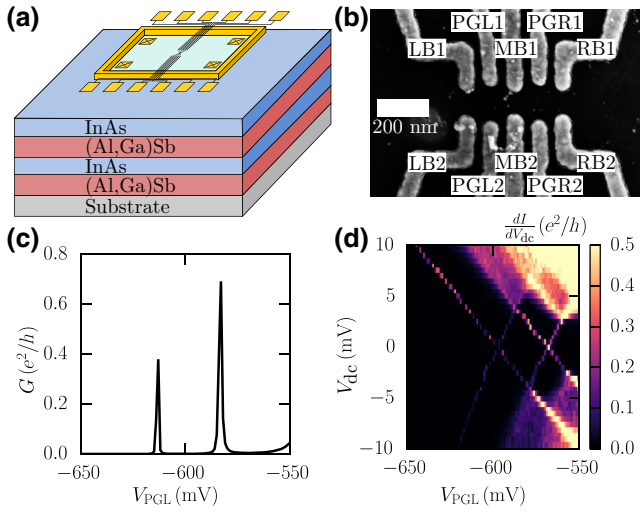


FIG. 1. (a) Three-dimensional view of sample geometry with a cross section of the heterostructure used. The 24-nm-wide InAs quantum well (lower blue layer) is sandwiched by two 20-nm (Al,Ga)Sb barriers (red) and capped with a 1.5-nm InAs layer (upper blue layer). Multiple layers of gates separated by  $\text{Al}_2\text{O}_3$  dielectric layers create a device used to form single and double quantum dots. (b) Scanning electron micrograph of the gate layout of a device similar to the one used in this study. (c) Coulomb resonances in the conductance  $G$  through the left quantum dot as a function of  $V_{\text{PGL}}$ . (d) Coulomb blockade diamond visible in the differential conductance as a function of  $V_{\text{PGL}}$  and  $V_{\text{dc}}$ . Uninterrupted Coulomb resonances up to  $V_{\text{dc}} = \pm 10$  mV and the absence of additional resonances indicate the loading of the first electron.

$1.4 \times 10^6 \text{ cm}^2 \text{ V}^{-1} \text{ s}^{-1}$  at density  $n_e = 5.1 \times 10^{11} \text{ cm}^{-2}$  measured at temperature  $T = 1.5$  K. Further details on heterostructure growth and properties can be found in Ref. [39].

To fabricate the device, Ti(20 nm)/Ni(20 nm)/Au(100 nm) Ohmic contacts are deposited in the first step. This is followed by the growth of 20-nm  $\text{Al}_2\text{O}_3$  by atomic layer deposition at  $150^\circ\text{C}$  as a first gate dielectric, on top of which the Ti(5 nm)/Au(45 nm) rectangular frame gate is deposited. Subsequently, a second gate dielectric of 20-nm  $\text{Al}_2\text{O}_3$  is deposited in analogy to the previous step. This enables the deposition of Ti(10 nm)/Au(50 nm) gate leads and Ti(5 nm)/Au(20 nm) fine gates defined by optical and electron beam lithography, respectively. In a last step, the contacts are released with a hydrofluoric acid etch of the dielectric layer in the contact areas and carefully contacted by glueing bond wires with conductive epoxy to prevent any leakage to the GaSb substrate wafer that could be caused by wire bonding. Fabrication on such shallow 2DEGs with Fermi level pinning at the surface is delicate and the yield is lower than with standard mesa-etch techniques. A schematic overview of this structure can be seen in Fig. 1(a).

The scanning electron micrograph in Fig. 1(b) shows the fine gate structure used to define single and double quantum dots of a sample similar to the one used in this study. The left quantum dot is defined by the left tunnel barriers (labeled LB1 and LB2), the left plunger gates (PGL1 and PGL2), and the middle tunnel barriers (MB1 and MB2). The latter gates form the right quantum dot together with the right plunger gates (PGR1 and PGR2) and the right tunnel barriers (RB1 and RB2). The measurements in this paper were conducted in a dilution refrigerator at the base temperature  $T = 57$  mK with use of low-frequency ac lock-in techniques. The frame gate is kept at a negative voltage such that it depletes the 2DEG underneath and electronic transport is measured strictly in the inner part of the electron gas across the quantum dot structure. This is necessary to avoid spurious effects of conduction along the sample edges that were found in similar InAs devices [14–16,34].

### III. SINGLE QUANTUM DOT

In the first experiment, we use the three leftmost gate pairs in Fig. 1(b) and apply a negative potential to them to define the left quantum dot. In the plot of the conductance  $G$  measured across the quantum dot as a function of  $V_{\text{PGL}}$ , the voltage applied to the left plunger gates, we observe narrow Coulomb resonances. Two of these are shown in Fig. 1(c), and each indicates the change of the quantum dot occupancy by one electron. We tune the system into a state where we presume these to be the last two electrons on the quantum dot. As this sample does not have a nearby charge detector [40,41] we present the results of multiple experiments in the following that all consistently confirm that this is the case. The results of one of these experiments are displayed in Fig. 1(d), where we record the differential conductance as a function of  $V_{\text{PGL}}$  and a dc source-drain bias voltage  $V_{\text{dc}}$  up to  $\pm 10$  mV, much larger than the charging energy of the quantum dot. Past the last Coulomb blockade diamond, no additional resonances appear, while the resonances that indicate the charging of the quantum dot with the first electron remain visible. This implies that the lack of additional resonances is not caused by the closing tunnel barriers.

#### A. Excited-state spectroscopy

For the next measurement, we tune the quantum dot such that we observe the Coulomb blockade diamonds of the first two electrons. These are shown in Fig. 2(a), where we again record the differential conductance as a function of  $V_{\text{PGL}}$  and  $V_{\text{dc}}$ . Integer numbers indicate the quantum dot occupancy. At bias voltage  $V_{\text{dc}} = \pm 3.9$  mV, we find resonances of excited states branching off the two-electron Coulomb blockade diamond. In two-electron quantum dots

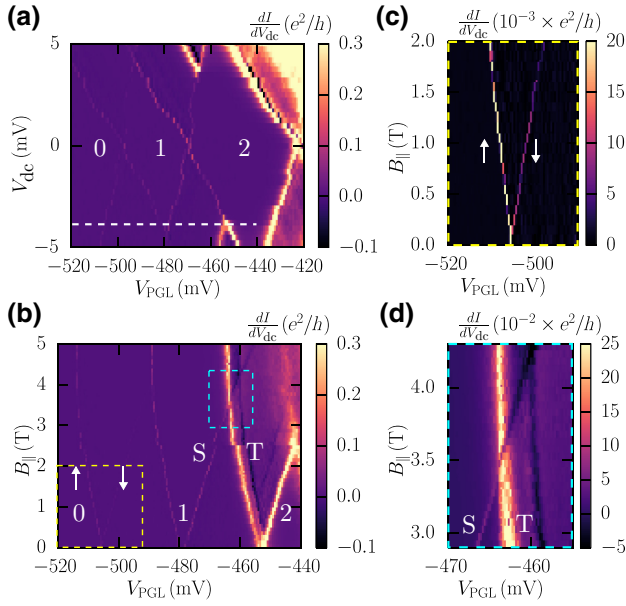


FIG. 2. (a) Coulomb blockade diamonds corresponding to the loading of the first two electrons. A resonance corresponding to the transition to an excited state branches off the two-electron Coulomb blockade diamond at  $V_{dc} = -3.9$  mV. (b) Magnetic field dependence of the resonances along the dashed white line in (a). (c) Enlargement of the dashed yellow box in (b). A linear Zeeman splitting of the resonances corresponding to the loading of the first electron is visible. (d) Enlargement of the dashed blue box in (b), where a direct crossing of the resonances corresponding to the spin singlet and a spin triplet state is observed.

in GaAs, the ground state is usually believed to be the spin-singlet state, whereas this lowest excitation is associated with the threefold-degenerate spin-triplet state [42].

To further elucidate the spin of these excited states, as well as to corroborate our hypothesis of the occupancy of this few-electron quantum dot, we use a parallel magnetic field while varying the plunger gate voltage along the dashed white line in Fig. 2(a) at a finite bias voltage  $V_{dc} = -3.9$  mV. The resulting data for the differential conductance as a function of  $V_{PGL}$  and the magnetic field  $B_{\parallel}$  are shown in Fig. 2(b). Here we note a linear Zeeman splitting of all resonances. To better visualize the splitting of the first visible resonance, we show in Fig. 2(c) an enlargement of the dashed yellow box in Fig. 2(b). As expected for the first electron, we recognize a linear splitting into two resonances for the two spin projections. From the magnitude of the splitting, we extract an effective  $g$  factor of  $|g^*| = 16.4$ , which is comparable to the bulk value expected for InAs [43,44].

### B. Singlet-triplet crossing

One of the main results of this work is found in the dashed blue box in Fig. 2(b), where the resonances marked

“S” and “T” cross. Resonance S appears where the transition energy  $\uparrow \rightarrow S$  equals the chemical potential  $\mu_S$  of the source lead, and resonance T occurs where the energy of both  $\uparrow \rightarrow T_+$  and  $\downarrow \rightarrow T_0$  match  $\mu_S$ . Thus, at the point where resonances S and T cross, the two-electron S and  $T_+$  states are degenerate, and past this crossing, the ground state of the two-electron system turns from a spin singlet to a spin triplet [45]. This region of proximity between these two states has been thoroughly investigated in quantum dots formed in InAs nanowires, as the magnitude of the anticrossing observed there is indicative of the strength of the spin-orbit interaction in the quantum dot [30,31]. The data in this region in our quantum dot defined in a 2DEG can be seen in Fig. 2(d). In contrast to the quantum dots defined in nanowires, we cannot detect a clear spin-orbit-mediated anticrossing of singlet and triplet states within our experimental resolution. Converting  $V_{PGL}$  to an energy scale using the Zeeman splitting between the single-electron spin-up and spin-down resonances that are visible on the left side of Fig. 2(b), we estimate that the size of the anticrossing does not exceed approximately  $80 \mu\text{eV}$ . Under the assumption that the magnitude of this spin-orbit-induced anticrossing is roughly  $|g^* \mu_B B_{\parallel} r / \sqrt{2} l_{SO}|$  [30], where  $r$  is the average distance between the two electrons occupying the quantum dot, we can estimate the relevant spin-orbit length in the quantum dot to be approximately  $0.9 \mu\text{m}$  or greater, assuming that  $r \sim 30$  nm.

This corresponds to a rather weak spin-orbit coupling compared with other reported values for InAs-based systems [19,30,31,46]. To understand the relatively weak spin-orbit coupling we observe, we consider the various contributions separately: (i) The Dresselhaus contribution [47] to the spin-orbit interaction depends on crystal inversion asymmetry, and its strength in InAs is comparable to that in GaAs [18]. Because of the difference in effective mass, the associated spin-orbit length will be 3 times longer than in a comparable GaAs-based system and thus can be roughly estimated to be on the order of 3–30  $\mu\text{m}$ . The expected strength of the Dresselhaus contribution is thus not inconsistent with the estimate given above. (ii) The coefficient of the Rashba contribution, which determines the strength of the spin-orbit coupling arising from structural inversion asymmetry of the system, is much larger in InAs than in GaAs. Nevertheless, the Rashba-type spin-orbit interaction in the 2DEG depends not only on this coefficient but also on the electric field normal to the plane of the 2DEG. The large and tunable spin-orbit interaction that was attributed to InAs 2DEGs in previous experiments was achieved by use of very asymmetric quantum wells and strong electric fields perpendicular to the quantum well [19,46]. Here, on the other hand, the quantum well is wide and contained by symmetric barriers, presumably leading to a very symmetric wave function. In that case, the large Rashba coefficient cannot be efficiently leveraged by an electric field and does therefore not lead to



an overall strong spin-orbit interaction. This is consistent with a missing beating in the Shubnikov–de Haas oscillations observed both in our planar InAs electron gas and previously in similar heterostructures [48].

### C. Kondo effect

Further investigating the quantum dot, we increase the tunnel coupling to the leads and observe the Kondo effect [49,50]. This phenomenon leads to a zero-bias resonance when an unpaired spin on the quantum dot forms a many-body state with the electrons in the leads. In Fig. 3(a) we show a measurement of the differential conductance obtained while we vary  $V_{dc}$  and  $V_{PGL}$ . The Coulomb blockade diamond for the first electron occupying the quantum dot features a resonance at zero bias indicative of the Kondo effect in our system. This observation is consistent with our picture of the system thus far as it means that an unpaired spin is occupying the quantum dot. Figure 3(b) displays the same measurement at external magnetic field  $B_{\parallel} = 150$  mT. We observe a Zeeman-split Kondo resonance within the Coulomb blockade diamond, as is theoretically expected. We investigate this splitting as a function of  $B_{\parallel}$  in Fig. 3(c). At constant  $V_{PGL} = -933$  mV, marked by the dashed white arrow in Fig. 3(a), the

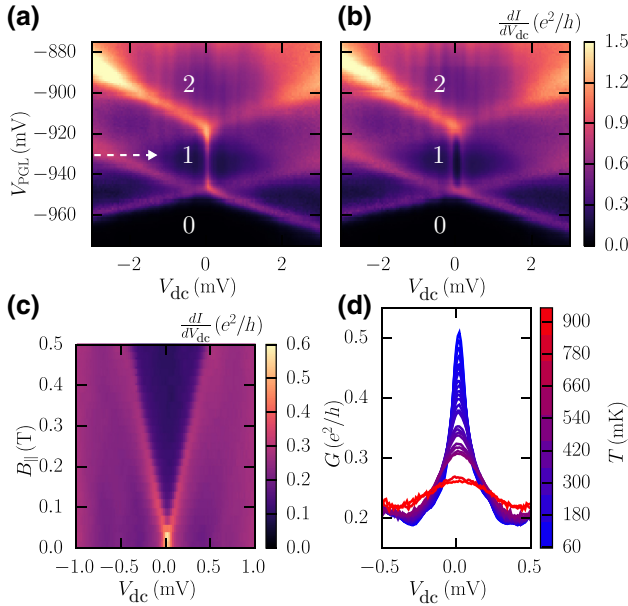


FIG. 3. (a) Coulomb blockade diamond in the conduction of the left quantum dot for strong coupling to the leads as a function of  $V_{dc}$  and  $V_{PGL}$  at  $B = 0$ . A clear zero-bias conductance peak indicates the observation of the Kondo effect. (b) Same as in (a) but at an external magnetic field of  $B_{\parallel} = 150$  mT causing a Zeeman splitting of the Kondo resonance. (c) Dependence of the Zeeman splitting of the Kondo resonance on  $B_{\parallel}$  recorded at  $V_{PGL} = -933$  mV marked by the dashed arrow in (a). (d) Temperature dependence of the peak conductance of the Kondo resonance.

position in  $V_{dc}$  of the Kondo resonance in the differential conductance linearly splits with increasing  $B_{\parallel}$ . For the Kondo effect, we expect twice the usual Zeeman splitting,  $\Delta E = 2|g|\mu_b B_{\parallel}$  [51]. This yields  $|g| = 16.3$ , in good agreement with the value obtained from excited-state spectroscopy. The analysis of the Kondo effect is completed by an investigation of its temperature dependence shown in Fig. 3(d). There we plot the Kondo resonance as a function of  $V_{dc}$  at different temperatures ranging from 57 to 952 mK according to the legend at the right-hand side of the Fig. 3(d). A strong suppression of the peak conductance with increasing temperature can be observed. We fit this behavior to the phenomenological expression  $G(T) = G_0 [1 + (T/T_K)^2]^{-s}$  [51], where  $T_K = T_K / (2^{1/s} - 1)^{1/2}$ , where  $s = 0.22$  and  $T_K$  is the Kondo temperature. This results in a Kondo temperature of approximately 800 mK.

## IV. DOUBLE QUANTUM DOT

### A. Charge stability diagram

For the next set of experiments, we use all the gates that can be seen in Fig. 1(b) to define a double quantum dot consisting of two tunnel coupled quantum dots in series. To characterize this system, we record a charge stability diagram. This is plotted in Fig. 4 as the logarithm of the conductance as a function of the plunger gate voltages of the left quantum dot,  $V_{PGL}$ , and of the right quantum dot,  $V_{PGR}$ . The regions of stable charge occupancy are labeled with tuples  $(N_L, N_R)$  representing the occupancy in the left and right quantum dots, respectively, and take the typical honeycomb shape that is expected from a double quantum dot.

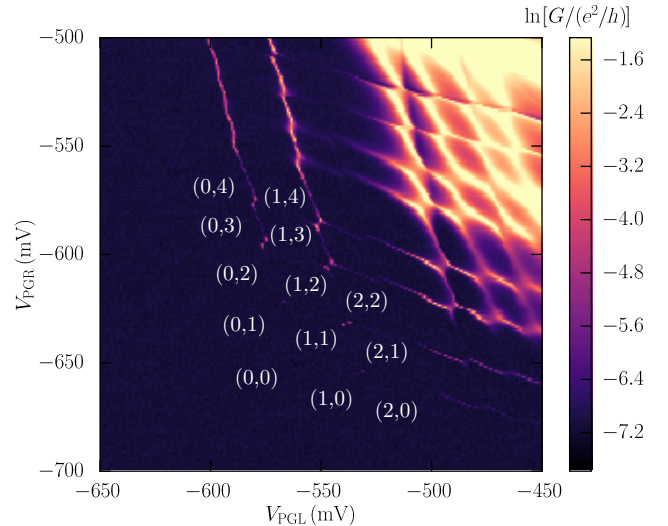


FIG. 4. Charge stability diagram visible in the logarithm of the conductance  $G$  of the double quantum dot system. Regions of stable charge occupancy are labeled with tuples  $(N_L, N_R)$  where  $N_L$  ( $N_R$ ) indicates the occupancy of the left (right) quantum dot.

### B. Singlet-triplet spin blockade

When a source-drain bias voltage is applied, finite bias triangles of current flow are formed at the triple points where three regions of stable charge occupancy meet. In Fig. 5 we show these triangles for three different sets of triple points, where we plot the magnitude of the current  $|I_{dc}|$  as a function of  $V_{PGL}$  and  $V_{PGR}$ . The bias triangles involving the transition from (1,2) to (0,3) at  $V_{dc} = 500$  mV and those involving the reverse transition from (0,3) to (1,2) at  $V_{dc} = -500$  mV can be seen in the left and right panels in Fig. 5(a). Regular and pronounced finite bias triangles are visible for both bias directions, as is expected since the charge transition (1,2) to (0,3) is not spin selective. In Fig. 5(b) we investigate the border between the (0,4) and (1,3) regions, when one additional

electron is in the double quantum dot system. A clear suppression of the current is visible in the left panel that involves the charge transition (1,3) to (0,4) as opposed to the right panel, where current involves the (0,4) to (1,3) transition. This can be explained by singlet-triplet spin blockade based on the Pauli exclusion principle [52]:

When the fourth electron tunnels onto the left quantum dot—that is, the (0,3) to (1,3) transition—there is no preferred direction of spin and the system can end up in any of the energetically allowed (1,3) spin states. Because of the Pauli principle, the only accessible (0,4) state is a spin singlet [53] and the subsequent charge transition (1,3) to (0,4) is thus allowed only if the (1,3) state is in a singlet configuration. If a (1,3) spin triplet was formed, the electron becomes trapped in the left quantum dot and current flow ceases until a non-spin-conserving tunnel process occurs. Meanwhile, the system is said to be in spin blockade. The reversed bias involves the (0,4) to (1,3) transition, which can always occur since the (1,3) state has no preferred spin configuration. Therefore, no spin blockade is observed in the right panel.

Similarly, at the border between the (2,2) and (1,3) regions, singlet-triplet spin blockade should occur when we attempt to drive the system from (1,3) to (2,2) at a negative bias voltage. This is exactly what is observed in the right panel in Fig. 5(c), where current is suppressed except at the outer edges, where thermal broadening contributes to a finite current. At positive bias in the left panel we measure regular finite bias triangles since the transition from (2,2) to (1,3) is not spin selective. The occurrence of spin blockade is another experimental observation that corroborates our hypothesis of low occupancy of the quantum dot system, as it is observed only in the few-electron regime [54].

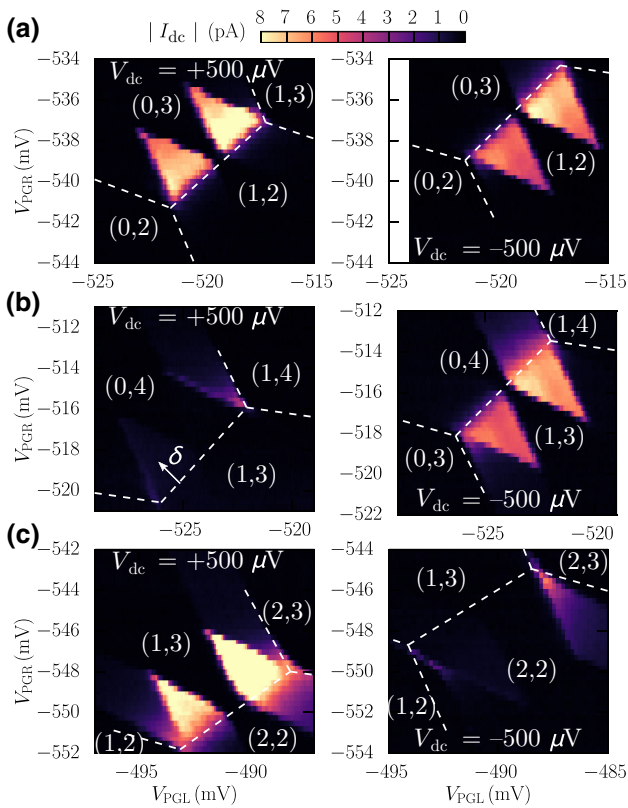


FIG. 5. (a) Magnitude of the current  $|I_{dc}|$  through the double quantum dot system at finite bias of  $V_{dc} = +500$  mV ( $V_{dc} = -500$  mV) in the left (right) panel. Electron transport involves the internal (1,2) to (0,3) transition (left) and (0,3) to (1,2) transition (right). As expected, in both cases current can flow, resulting in finite bias triangles. (b)  $|I_{dc}|$  involving the (1,3) to (0,4) transition (left) and the (0,4) to (1,3) transition (right). The triangles involving the transition from (1,3) to (0,4) occupancy at  $V_{dc} = +500$  mV show an absence of current due to singlet-triplet spin blockade by Pauli exclusion. (c)  $|I_{dc}|$  involving the (2,2) to (1,3) transition (left) and the (1,3) to (2,2) transition (right). The transition from (1,3) to (2,2) occupancy at  $V_{dc} = -500$  mV is blocked.

### C. Spin blockade for strong interdot tunnel coupling

We further characterize the spin blockade in our system, first for strong tunnel coupling between the two quantum dots. For this, we use a parallel magnetic field  $B_{\parallel}$  and change the detuning  $\delta$  between the left quantum dot and the right quantum dot, where  $\delta$  is measured along the white arrow in Fig. 5(b) and is expressed in millielectronvolts, where we use the extent of the bias triangles to find the lever arm. In Fig. 6(a) we plot the leakage current in the spin blockade regime involving the (1,3) to (0,4) transition as a function of  $B_{\parallel}$  and  $\delta$ . We analyze these data and thereby try to extract information about the strength of the spin-orbit coupling. The general structure of the  $\delta$ -dependent current, away from zero field, is a sharp resonance followed by a lower-current tail. The resonance is expected to appear where the (1,3) and (0,4) ground states align, and we attribute the tail at larger detuning to inelastic interdot tunneling where the excess energy of the (1,3) state is dissipated into the phonon bath. The current

drops abruptly when  $\delta$  is increased beyond the borders of the bias triangle, where the system enters Coulomb blockade,  $|eV_{\text{dc}}|$  approximately 0.5 meV away from the baseline. The fact that the sharp resonances show a V shape in the  $\delta$ - $B_{\parallel}$ -plane is an indication that the (0,4) ground state is a spin singlet: Indeed, if the (0,4) ground state were a spin triplet, then the resonance between the (1,3) and (0,4) triplet ground states should occur around the same value of  $\delta$  for all values of  $B_{\parallel}$ . Furthermore, from the slope of the resonances we find  $|g^*| = 16.4$ , which is in good agreement with our earlier estimates.

Extrapolating the two linear resonances to zero field allows us to identify the gate voltage settings that correspond to effective alignment of the energies of the (1,3) and (0,4) charge states. From a high-resolution trace along  $B_{\parallel}$  very close to this point, shown in Fig. 6(b), we find a residual peak splitting of 46 mT, which corresponds to 44  $\mu\text{eV}$ , close to zero detuning. This provides a measure for  $2t$ , where  $t$  is the coherent tunnel coupling strength between the (1,3) and (0,4) singlets [36].

Next we focus on the current as a function of  $\delta$  for fields  $|B_{\parallel}| > 500$  mT. At such large fields, the Zeeman splitting

exceeds the size of the bias window  $eV_{\text{dc}}$  and we can thus safely assume that transport involves only ground states; that is, the transport cycle is  $D_{\uparrow}^{(0,3)} \rightarrow T_{+}^{(1,3)} \rightarrow S^{(0,4)} \rightarrow D_{\uparrow}^{(0,3)}$ , where  $D_{\uparrow}^{(0,3)}$  denotes the (0,3) charge state in a spin-up configuration. In that simple situation, where only three states are involved, the resonant current is expected to have a Lorentzian line shape [55],

$$|I_{\text{dc}}| = \frac{et_{\text{SF}}^2 \Gamma_{\text{out}}}{t_{\text{SF}}^2 (2 + \Gamma_{\text{out}}/\Gamma_{\text{in}}) + (\hbar\Gamma_{\text{out}})^2/4 + \delta^2}, \quad (1)$$

where  $\Gamma_{\text{out}}$  and  $\Gamma_{\text{in}}$  denote the tunnel rates out of  $S^{(0,4)}$  and into  $T_{+}^{(1,3)}$ , respectively. The coherent coupling between  $T_{+}^{(1,3)}$  and  $S^{(0,4)}$  involves a spin flip, and its strength is denoted by  $t_{\text{SF}}$ . Assuming that  $\Gamma_{\text{out}} \sim \Gamma_{\text{in}}$  and anticipating that  $t_{\text{SF}} \ll \Gamma_{\text{out}}$ , we find Eq. (1) reduces to a peak with a full width at half maximum of  $\hbar\Gamma_{\text{out}}$  and a peak value of  $I_{\text{max}} = 4et_{\text{SF}}^2/\hbar^2\Gamma_{\text{out}}$ . Thus focusing on the sharp resonance in the data and disregarding the inelastic current tail, we fit the onset of each peak in the data in Fig. 6(c) to a Lorentzian (adding a constant background offset as fit parameter). The result of one such fit, for  $B_{\parallel} = 700$  mT, is shown in Fig. 6(c), where the blue points represent the data and the green curve represents the fitted Lorentzian, yielding  $\hbar\Gamma_{\text{out}} = 25.5 \mu\text{eV}$  and  $I_{\text{max}} = 4.14$  pA (which does not include the constant background). We repeat this procedure for all traces with  $|B_{\parallel}| > 500$  mT, which results after averaging in  $\hbar\Gamma_{\text{out}} = 31 \pm 10 \mu\text{eV}$  and  $I_{\text{max}} = 4.00 \pm 0.34$  pA. Using these values, we find  $t_{\text{SF}} = 0.36 \pm 0.08 \mu\text{eV}$ .

Finally, we investigate the underlying mechanism responsible for the spin-flip tunnel coupling between  $T_{+}^{(1,3)}$  and  $S^{(0,4)}$ . We consider two common candidate mechanisms: (i) Hyperfine interaction between the electron spins and the nuclear spin bath can result in a spin flip, after which the system can transition to (0,4) via a spin-conserving tunneling process. This yields an effective coupling energy of  $t_{\text{SF}} \sim (1/\sqrt{2})t(K/|B_{\parallel}|)$ , where  $K$  is the typical magnitude of the effective nuclear fields acting on the electrons in the quantum dots. (ii) Spin-orbit coupling can induce a rotation of the spin state of electrons “during” tunneling between the quantum dots, resulting in a coherent coupling between  $T_{+}^{(1,3)}$  and  $S^{(0,4)}$  on the order of  $t_{\text{SF}} \sim (1/\sqrt{2})t(d/l_{\text{SO}})$ , where  $d$  is the distance between the quantum dots and  $l_{\text{SO}}$  is the spin-orbit length along the interdot axis [56]. We see that mechanism (i) should result in a significant field dependence of  $t_{\text{SF}}$  and thus  $I_{\text{max}}$ , whereas mechanism (ii) should produce a mostly field-independent  $t_{\text{SF}}$ . In Fig. 6(d) we plot the fitted values of  $I_{\text{max}}$  as a function of  $B_{\parallel}$ , and we see that the peak height is rather constant, suggesting that the spin-orbit mechanism is dominating. Besides, for a hyperfine-driven spin-flip tunnel coupling the estimate of  $K \sim 0.6$  mT (see the next section) would produce  $t_{\text{SF}} \lesssim 20$  neV for fields  $|B_{\parallel}| > 500$  mT, which is far too small to explain the data.

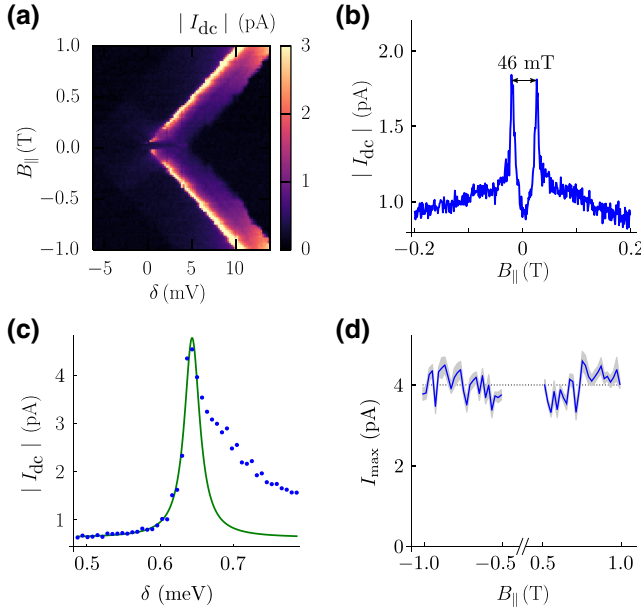


FIG. 6. (a) Dependence of the magnitude of the leakage current  $|I_{\text{dc}}|$  through the spin blockade involving the (1,3) to (0,4) transition for strong interdot tunnel coupling on  $\delta$  and  $B_{\parallel}$ . A dip around zero external magnetic field is visible in the data. (b) High-resolution trace of  $|I_{\text{dc}}|$  as a function of  $B_{\parallel}$  around zero detuning. (c)  $\delta$ -dependent leakage current  $|I_{\text{dc}}|$  at  $B_{\parallel} = 700$  mT (blue) and a Lorentzian fit to the onset of the peak (green) disregarding the inelastic current tail. (d) Peak current values  $I_{\text{max}}$  for  $|B_{\parallel}| > 500$  mT, where the gray shaded area indicates the magnitude of the error of each fit. Their field-independent height suggests spin-orbit coupling as the main mechanism responsible for spin-flip tunneling rather than hyperfine coupling.



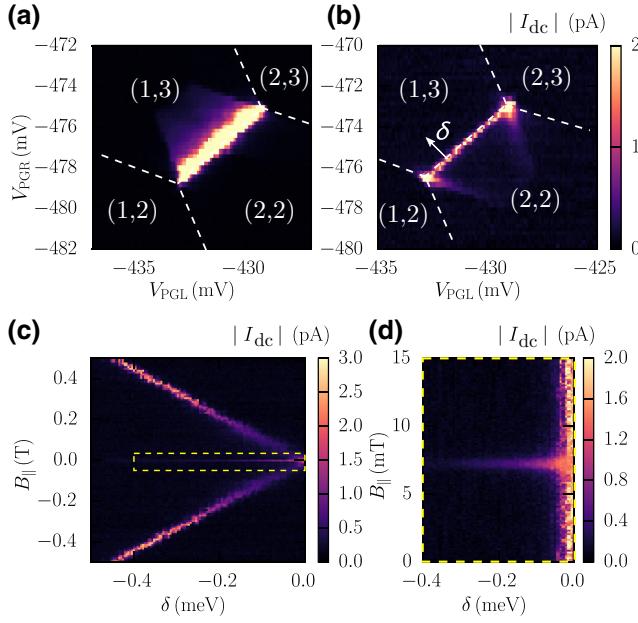


FIG. 7. (a) Magnitude of the current  $|I_{dc}|$  through the double quantum dot system for weak interdot tunnel coupling and at a finite bias of  $V_{dc} = +500 \mu\text{V}$ , close to the triple points involving the (2,2) to (1,3) transition. (b) Transitions from (1,3) to (2,2) at  $V_{dc} = -500 \mu\text{V}$  are suppressed due to singlet-triplet spin blockade. For weak interdot tunnel coupling, a leakage current is observed when the tunneling process is resonant. (c) Dependence of this leakage current on  $\delta$  and  $B_{||}$ . A narrow resonance around zero external magnetic field is observed. (d) Enlargement of the dashed yellow box in (c) showing more clearly the zero-field resonance arising from hyperfine coupling to the nuclear spins of the host crystal. The offset from  $B_{||} = 0$  is due to residual magnetization in our experimental setup.

Thus attributing  $t_{SF}$  to spin-orbit coupling, we can estimate the spin-orbit length to be  $8.6 \pm 2.4 \mu\text{m}$ , assuming a spacing of 200 nm between the quantum dot centers. This is consistent with all the other estimates presented above.

#### D. Spin blockade for weak interdot tunnel coupling

On reducing the tunnel coupling between the two quantum dots, we enter a regime in which the spin blockade manifests itself in a qualitatively different way [32,36,57]. Figure 7(a) shows the current in the region close to the boundary between the (2,2) and (1,3) charge regions at  $V_{dc} = 500 \mu\text{V}$ . The finite bias triangles in this forward direction show a pronounced baseline, corresponding to resonant interdot tunneling, and quickly decaying current levels towards the tips of the triangles. The situation at reverse bias in the spin blockade regime can be seen in Fig. 7(b). Similarly to the forward direction, a pronounced baseline of the triangles is visible, but inside the triangles the current is now suppressed, which is qualitatively different from the strong-coupling triangles shown in Fig. 5(c). In Fig. 7(c) we plot the leakage current as a function of  $B_{||}$

and  $\delta$ , where  $\delta$  is now measured along the dashed white line in Fig. 7(b). The strongest resonances appear in a V shape like in Fig. 6(a), mapping out where the (1,3)  $T_+$  ground state is resonant with the (2,2) singlet state. In addition to these resonances, we also observe a very narrow resonance at zero magnetic field, in contrast to the zero-field dip we find in the strong-coupling regime. This peak in the leakage current is caused by hyperfine coupling between the electron spins and the nuclear spins in the surrounding crystal [36,58,59]. This coupling is now stronger than the exchange effects caused by the interdot tunnel coupling and can thus efficiently mix all four (1,3) spin states at small magnetic fields, thereby lifting the blockade of the triplet states. From the enlargement of this resonance in Fig. 7(d), we find a full width at half maximum of approximately 0.6 mT; this indicates the typical magnitude of the random effective nuclear fields acting on the electron spins. This value is consistent with other values reported for InAs-based quantum dots [32,33,57] taking into account our comparatively large quantum dot volume and the large  $g$  factor in our system.

## V. CONCLUSION

In conclusion, we present the first realization of high-quality gate-defined few-electron single and double quantum dots in an InAs two-dimensional electron gas. We obtain dc control over our quantum dots with similar precision as is common for GaAs- and Si-based quantum dots, which have been around for decades. In the single quantum dot, we observe a pronounced Kondo effect of the last electron and we characterize this effect consistently with theory and previous experiments in other materials. Additionally, we perform excited state-spectroscopy, which allows us to determine a  $g$  factor of approximately 16 and put a lower bound on the effective spin-orbit length in the system. In the double quantum dot we observe Pauli spin blockade, and analyze the leakage current for both strong and weak interdot tunnel coupling to arrive at estimates for the typical magnitude of the random hyperfine fields on the quantum dots  $K \sim 0.6 \text{ mT}$  and the spin-orbit length  $l_{SO} \sim 8 \mu\text{m}$ , which is almost 2 orders of magnitude longer than typically measured in InAs-based nanostructures. Together with the low effective electronic mass in InAs, these results put InAs on the map as a competitive base material for spin qubits.

The unusually large spin-orbit length we measure is most likely due to the very symmetric design of our quantum well in the out-of-plane direction, since any small asymmetry in the potential is leveraged into strong spin-orbit coupling by the large Rashba coefficient in InAs. This combination of having weak spin-orbit coupling in a material with a large Rashba coefficient could potentially allow engineering of two-dimensional structures

where gate-induced electric fields generate strong spin-orbit interaction locally in space and/or time.

### ACKNOWLEDGMENTS

The authors acknowledge the support of the ETH FIRST laboratory and the financial support of the Swiss Science Foundation (Schweizerischer Nationalfonds, NCCR QSIT). The work at Purdue University was funded by Microsoft Quantum. J.D. acknowledges support through FRIPRO project 274853, which is funded by the Research Council of Norway.

- 
- [1] D. Loss and D. P. DiVincenzo, Quantum computation with quantum dots, *Phys. Rev. A* **57**, 120 (1998).
- [2] A. V. Khaetskii, D. Loss, and L. I. Glazman, Electron Spin Decoherence in Quantum Dots due to Interaction with Nuclei, *Phys. Rev. Lett.* **88**, 186802 (2002).
- [3] F. H. L. Koppens, C. Buizert, K.-J. Tielrooij, I. T. Vink, K. C. Nowack, T. Meunier, L. P. Kouwenhoven, and L. M. K. Vandersypen, Driven coherent oscillations of a single electron spin in a quantum dot, *Nature* **442**, 766 (2006).
- [4] J. R. Petta, A. C. Johnson, J. M. Taylor, E. A. Laird, A. Yacoby, M. D. Lukin, C. M. Marcus, M. P. Hanson, and A. C. Gossard, Coherent manipulation of coupled electron spins in semiconductor quantum dots, *Science* **309**, 2180 (2005).
- [5] J. Medford, J. Beil, J. M. Taylor, E. I. Rashba, H. Lu, A. C. Gossard, and C. M. Marcus, Quantum-Dot-Based Resonant Exchange Qubit, *Phys. Rev. Lett.* **111**, 050501 (2013).
- [6] J. Yoneda, K. Takeda, T. Otsuka, T. Nakajima, M. R. Delbecq, G. Allison, T. Honda, T. Kodera, S. Oda, Y. Hoshi, N. Usami, K. M. Itoh, and S. Tarucha, A quantum-dot spin qubit with coherence limited by charge noise and fidelity higher than 99.9%, *Nat. Nanotechnol.* **13**, 102 (2018).. 1708.01454
- [7] W. Huang, C. H. Yang, K. W. Chan, T. Tanttu, B. Hensen, R. C. C. Leon, M. A. Fogarty, J. C. C. Hwang, F. E. Hudson, K. M. Itoh, A. Morello, A. Laucht, and A. S. Dzurak, Fidelity benchmarks for two-qubit gates in silicon, *Nature* **569**, 532 (2019).
- [8] L. Petit, H. G. J. Eenink, M. Russ, W. I. L. Lawrie, N. W. Hendrickx, S. G. J. Philips, J. S. Clarke, L. M. K. Vandersypen, and M. Veldhorst, Universal quantum logic in hot silicon qubits, *Nature* **580**, 355 (2020).
- [9] C. H. Yang, R. C. Leon, J. C. Hwang, A. Saraiva, T. Tanttu, W. Huang, J. Camirand Lemyre, K. W. Chan, K. Y. Tan, F. E. Hudson, K. M. Itoh, A. Morello, M. Pioro-Ladrière, A. Laucht, and A. S. Dzurak, Operation of a silicon quantum processor unit cell above one kelvin, *Nature* **580**, 350 (2020).
- [10] H. Watzinger, J. Kukučka, L. Vukušić, F. Gao, T. Wang, F. Schäffler, J.-J. Zhang, and G. Katsaros, A germanium hole spin qubit, *Nat. Commun.* **9**, 3902 (2018). <http://www.nature.com/articles/s41467-018-06418-4>
- [11] F. N. M. Froning, L. C. Camenzind, O. A. H. van der Molen, A. Li, E. P. A. M. Bakkers, D. M. Zumbühl, and F. R. Braakman, [arXiv:2006.11175](https://arxiv.org/abs/2006.11175).
- [12] N. W. Hendrickx, W. I. L. Lawrie, M. Russ, F. van Riggelen, S. L. de Snoo, R. N. Schouten, A. Sammak, G. Scappucci, and M. Veldhorst, [arXiv:2009.04268](https://arxiv.org/abs/2009.04268).
- [13] F. A. Zwanenburg, A. S. Dzurak, A. Morello, M. Y. Simmons, L. C. L. Hollenberg, G. Klimeck, S. Rogge, S. N. Coppersmith, and M. A. Eriksson, Silicon quantum electronics, *Rev. Mod. Phys.* **85**, 961 (2013).
- [14] F. Nichele, H. J. Suominen, M. Kjaergaard, C. M. Marcus, E. Sajadi, J. A. Folk, F. Qu, A. J. A. Beukman, F. K. d. Vries, J. v. Veen, S. Nadj-Perge, L. P. Kouwenhoven, B.-M. Nguyen, A. A. Kiselev, W. Yi, M. Sokolich, M. J. Manfra, E. M. Spanton, and K. A. Moler, Edge transport in the trivial phase of InAs/GaSb, *New. J. Phys.* **18**, 083005 (2016).
- [15] B.-M. Nguyen, A. A. Kiselev, R. Noah, W. Yi, F. Qu, A. J. Beukman, F. K. de Vries, J. van Veen, S. Nadj-Perge, L. P. Kouwenhoven, M. Kjaergaard, H. J. Suominen, F. Nichele, C. M. Marcus, M. J. Manfra, and M. Sokolich, Decoupling Edge Versus Bulk Conductance in the Trivial Regime of an InAs/GaSb Double Quantum Well Using Corbino Ring Geometry, *Phys. Rev. Lett.* **117**, 077701 (2016).
- [16] S. Mueller, C. Mittag, T. Tschirky, C. Charpentier, W. Wegscheider, K. Ensslin, and T. Ihn, Edge transport in InAs and InAs/GaSb quantum wells, *Phys. Rev. B* **96**, 075406 (2017).
- [17] C. Mittag, M. Karalic, S. Mueller, T. Tschirky, W. Wegscheider, O. Nazarenko, M. V. Kovalenko, T. Ihn, and K. Ensslin, Passivation of edge states in etched InAs sidewalls, *Appl. Phys. Lett.* **111**, 082101 (2017).
- [18] R. Winkler, *Spin-Orbit Coupling Effects in Two-Dimensional Electron and Hole Systems*, Springer Tracts in Modern Physics, Vol. 191, Springer Berlin Heidelberg, Berlin, Heidelberg, 2003.
- [19] D. Grundler, Large Rashba Splitting in InAs Quantum Wells due to Electron Wave Function Penetration Into the Barrier Layers, *Phys. Rev. Lett.* **84**, 6074 (2000).
- [20] A. Y. Kitaev, Unpaired majorana fermions in quantum wires, *Physics-Uspekhi* **44**, 131 (2001).
- [21] J. D. Sau, R. M. Lutchyn, S. Tewari, and S. Das Sarma, Generic new Platform for Topological Quantum Computation Using Semiconductor Heterostructures, *Phys. Rev. Lett.* **104**, 040502 (2010).
- [22] R. M. Lutchyn, J. D. Sau, and S. Das Sarma, Majorana Fermions and a Topological Phase Transition in Semiconductor-Superconductor Heterostructures, *Phys. Rev. Lett.* **105**, 077001 (2010).
- [23] Y. Oreg, G. Refael, and F. von Oppen, Helical Liquids and Majorana Bound States in Quantum Wires, *Phys. Rev. Lett.* **105**, 177002 (2010).
- [24] D. A. Ivanov, Non-Abelian Statistics of Half-Quantum Vortices in  $p$ -Wave Superconductors, *Phys. Rev. Lett.* **86**, 268 (2001).
- [25] C. Nayak, S. H. Simon, A. Stern, M. H. Freedman, and S. Das Sarma, Non-abelian anyons and topological quantum computation, *Rev. Mod. Phys.* **80**, 1083 (2008).
- [26] V. Mourik, K. Zuo, S. M. Frolov, S. R. Plissard, E. P. A. M. Bakkers, and L. P. Kouwenhoven, Signatures of majorana fermions in hybrid superconductor-semiconductor nanowire devices, *Science* **336**, 1003 (2012).

- [27] M. T. Deng, S. Vaitiekėnas, E. B. Hansen, J. Danon, M. Leijnse, K. Flensberg, J. Nygård, P. Krogstrup, and C. M. Marcus, Majorana bound state in a coupled quantum-dot hybrid-nanowire system, *Science* **354**, 1557 (2016).
- [28] H. Zhang, C.-X. Liu, S. Gazibegovic, D. Xu, J. A. Logan, N. V. Loo, J. D. S. Bommer, M. W. A. D. Moor, D. Car, R. L. M. Op, P. J. V. Veldhoven, S. Koelling, and M. A. Verheijen, Quantized majorana conductance, *Nature* **556**, 74 (2018). <http://www.nature.com/articles/nature26142>
- [29] M. Hell, M. Leijnse, and K. Flensberg, Two-Dimensional Platform for Networks of Majorana Bound States, *Phys. Rev. Lett.* **118**, 107701 (2017).
- [30] C. Fasth, A. Fuhrer, L. Samuelson, V. N. Golovach, and D. Loss, Direct Measurement of the Spin-Orbit Interaction in a Two-Electron InAs Nanowire Quantum Dot, *Phys. Rev. Lett.* **98**, 266801 (2007).
- [31] A. Pfund, I. Shorubalko, K. Ensslin, and R. Leturcq, Spin-state mixing in InAs double quantum dots, *Phys. Rev. B* **76**, 161308 (2007).
- [32] S. Nadj-Perge, S. M. Frolov, J. W. W. van Tilburg, J. Danon, Y. V. Nazarov, R. Algra, E. P. A. M. Bakkers, and L. P. Kouwenhoven, Disentangling the effects of spin-orbit and hyperfine interactions on spin blockade, *Phys. Rev. B* **81**, 201305 (2010).
- [33] S. Nadj-Perge, S. M. Frolov, E. P. a. M. Bakkers, and L. P. Kouwenhoven, Spin-orbit qubit in a semiconductor nanowire, *Nature* **468**, 1084 (2010).
- [34] C. Mittag, M. Karalic, Z. Lei, T. Tschirky, W. Wegscheider, T. Ihn, and K. Ensslin, Edgeless and purely gate-defined nanostructures in InAs quantum wells, *Appl. Phys. Lett.* **113**, 262103 (2018).
- [35] In experiments searching for possible beating patterns in Shubnikov–de Haas oscillations signaling spin-orbit split bands, a negative result was reported many years ago for samples quite similar to those investigated in our present work [48].
- [36] F. H. L. Koppens, J. A. Folk, J. M. Elzerman, R. Hanson, L. H. W. v. Beveren, I. T. Vink, H. P. Tranitz, W. Wegscheider, L. P. Kouwenhoven, and L. M. K. Vandersypen, Control and detection of singlet-triplet mixing in a random nuclear field, *Science* **309**, 1346 (2005).
- [37] O. N. Jouravlev and Y. V. Nazarov, Electron Transport in a Double Quantum Dot Governed by a Nuclear Magnetic Field, *Phys. Rev. Lett.* **96**, 176804 (2006). <http://link.aps.org/abstract/PRL/v96/e176804>
- [38] R. Hanson, L. P. Kouwenhoven, J. R. Petta, S. Tarucha, and L. M. K. Vandersypen, Spins in few-electron quantum dots, *Rev. Mod. Phys.* **79**, 1217 (2007).
- [39] C. Thomas, A. T. Hatke, A. Tuaz, R. Kallaher, T. Wu, T. Wang, R. E. Diaz, G. C. Gardner, M. A. Capano, and M. J. Manfra, High-mobility InAs 2DEGs on GaSb substrates: A platform for mesoscopic quantum transport, *Phys. Rev. Mater.* **2**, 104602 (2018).
- [40] R. Schleser, E. Ruh, T. Ihn, K. Ensslin, D. C. Driscoll, and A. C. Gossard, Time-resolved detection of individual electrons in a quantum dot, *Appl. Phys. Lett.* **85**, 2005 (2004).
- [41] L. M. K. Vandersypen, J. M. Elzerman, R. N. Schouten, L. H. Willems van Beveren, R. Hanson, and L. P. Kouwenhoven, Real-time detection of single-electron tunneling using a quantum point contact, *Appl. Phys. Lett.* **85**, 4394 (2004).
- [42] C. Ellenberger, T. Ihn, C. Yannouleas, U. Landman, K. Ensslin, D. Driscoll, and A. C. Gossard, Excitation Spectrum of Two Correlated Electrons in a Lateral Quantum Dot with Negligible Zeeman Splitting, *Phys. Rev. Lett.* **96**, 126806 (2006).
- [43] J. Konopka, Conduction electron spin resonance in InAs, *Phys. Lett. A* **26**, 29 (1967).
- [44] C. R. Pidgeon, D. L. Mitchell, and R. N. Brown, Interband magnetoabsorption in InAs and InSb, *Phys. Rev.* **154**, 737 (1967).
- [45] The fact that resonance S changes sign when it crosses resonance T signals that the actual rates corresponding to all transitions contributing to electron transport are significantly different, most likely due to differences in the orbital structure of the states involved and/or asymmetric coupling to the source and drain leads.
- [46] J. Nitta, T. Akazaki, H. Takayanagi, and T. Enoki, Gate Control of Spin-Orbit Interaction in an Inverted In<sub>0.53</sub>Ga<sub>0.47</sub>As/In<sub>0.52</sub>Al<sub>0.48</sub>As Heterostructure, *Phys. Rev. Lett.* **78**, 1335 (1997).
- [47] G. Dresselhaus, Spin-orbit coupling effects in zinc blende structures, *Phys. Rev.* **100**, 580 (1955).
- [48] S. Brosig, K. Ensslin, R. J. Warburton, C. Nguyen, B. Brar, M. Thomas, and H. Kroemer, Zero-field spin splitting in InAs-AlSb quantum wells revisited, *Phys. Rev. B* **60**, R13989 (1999).
- [49] D. Goldhaber-Gordon, H. Shtrikman, D. Mahalu, D. Abusch-Magder, U. Meirav, and M. A. Kastner, Kondo effect in a single-electron transistor, *Nature* **391**, 156 (1998).
- [50] S. M. Cronenwett, T. H. Oosterkamp, and L. P. Kouwenhoven, A tunable kondo effect in quantum dots, *Science* **281**, 540 (1998).
- [51] A. V. Kretinin, H. Shtrikman, D. Goldhaber-Gordon, M. Hanl, A. Weichselbaum, J. von Delft, T. Costi, and D. Mahalu, Spin- $\frac{1}{2}$  kondo effect in an InAs nanowire quantum dot: Unitary limit, conductance scaling, and zeeman splitting, *Phys. Rev. B* **84**, 245316 (2011).
- [52] K. Ono, D. G. Austing, Y. Tokura, and S. Tarucha, Current rectification by pauli exclusion in a weakly coupled double quantum dot system, *Science* **297**, 1313 (2002).
- [53] In principle, due to intradot Coulomb interaction, the four-electron ground state in a quantum dot can also be a spin triplet, depending on the shape and size of the quantum dot. However, our field-dependent measurements of the current in the spin blockade regime suggest that the (0, 4) ground state is a singlet; see Sec. IV C.
- [54] A. C. Johnson, J. R. Petta, C. M. Marcus, M. P. Hanson, and A. C. Gossard, Singlet-triplet spin blockade and charge sensing in a few-electron double quantum dot, *Phys. Rev. B* **72**, 165308 (2005).
- [55] T. H. Stoof and Y. V. Nazarov, Time-dependent resonant tunneling via two discrete states, *Phys. Rev. B* **53**, 1050 (1996).
- [56] J. Danon, Spin-flip phonon-mediated charge relaxation in double quantum dots, *Phys. Rev. B* **88**, 075306 (2013).
- [57] A. Pfund, I. Shorubalko, K. Ensslin, and R. Leturcq, Suppression of Spin Relaxation in an InAs Nanowire

- Double Quantum Dot, *Phys. Rev. Lett.* **99**, 036801 (2007).
- [58] K. Ono and S. Tarucha, Nuclear-Spin-Induced Oscillatory Current in Spin-Blockaded Quantum Dots, *Phys. Rev. Lett.* **92**, 256803 (2004).
- [59] A. C. Johnson, J. R. Petta, J. M. Taylor, A. Yacoby, M. D. Lukin, C. M. Marcus, M. P. Hanson, and A. C. Gossard, Triplet–singlet spin relaxation via nuclei in a double quantum dot, *Nature* **435**, 925 (2005).