

Unraveling virus-induced cellular signaling cascades by label-free quantitative phosphoproteomics

Journal Article**Author(s):**

Hunziker, Annika; Stertz, Silke

Publication date:

2022-03-18

Permanent link:

<https://doi.org/10.3929/ethz-b-000527717>

Rights / license:

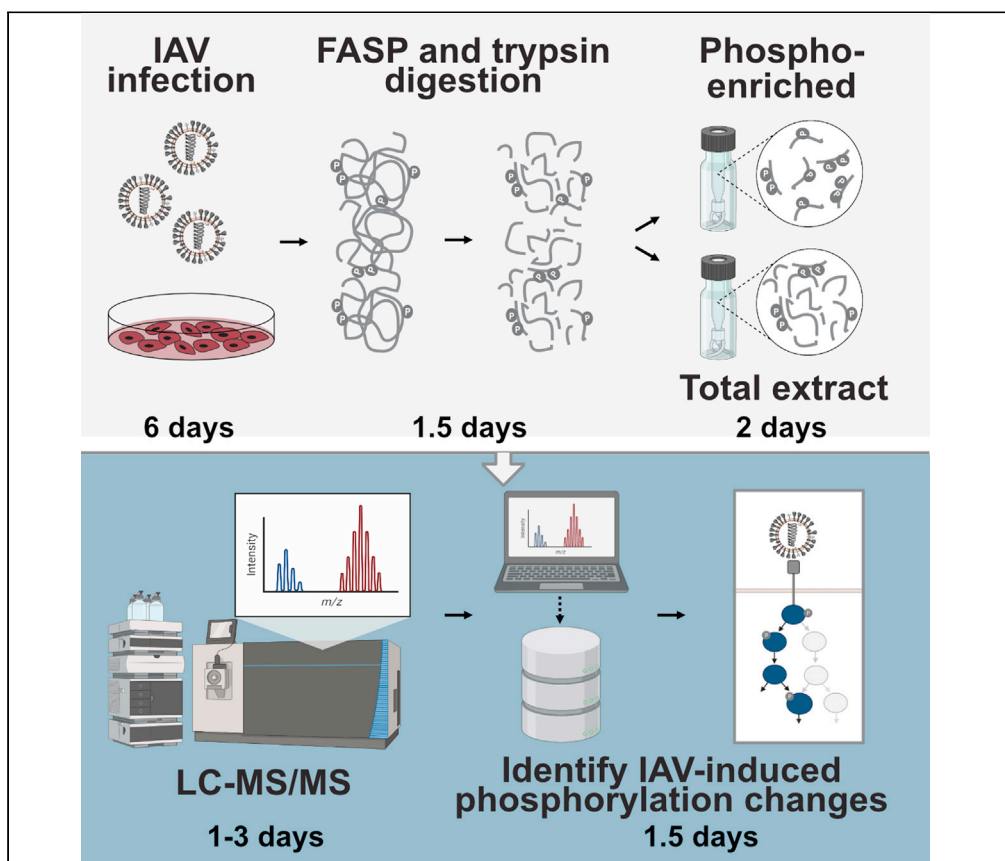
[Creative Commons Attribution-NonCommercial-NoDerivatives 4.0 International](#)

Originally published in:

STAR Protocols 3(1), <https://doi.org/10.1016/j.xpro.2021.101089>

Protocol

Unraveling virus-induced cellular signaling cascades by label-free quantitative phosphoproteomics



Due to the low stoichiometry and highly transient nature of protein phosphorylation it is challenging to capture the dynamics and complexity of phosphorylation events on a systems level. Here, we present an optimized protocol to measure virus-induced phosphorylation events with high sensitivity using label free quantification-based phosphoproteomics. Specifically, we describe filter assisted protein digestion (FASP), enrichment of phosphopeptides, mass spectrometry, and subsequent bioinformatic analysis.

Annika Hunziker,
Silke Stertz

stertz.silke@virology.uzh.
ch

Highlights

Protocol to reveal virus-induced changes to the cellular phosphoproteome

Optimized automated phosphopeptide enrichment increases sensitivity

Protocol uses label-free quantification, allowing for large numbers of samples

Hunziker & Stertz, STAR
Protocols 3, 101089
March 18, 2022 © 2021 The
Author(s).
[https://doi.org/10.1016/
j.xpro.2021.101089](https://doi.org/10.1016/j.xpro.2021.101089)



Protocol

Unraveling virus-induced cellular signaling cascades by label-free quantitative phosphoproteomics

Annika Hunziker^{1,2} and Silke Stertz^{1,3,4,*}¹Institute of Medical Virology, University of Zurich, 8057 Zurich, Switzerland²Life Sciences Zurich Graduate School, ETH and University of Zurich, 8057 Zurich, Switzerland³Technical contact⁴Lead contact*Correspondence: stertz.silke@virology.uzh.ch
<https://doi.org/10.1016/j.xpro.2021.101089>

SUMMARY

Due to the low stoichiometry and highly transient nature of protein phosphorylation it is challenging to capture the dynamics and complexity of phosphorylation events on a systems level. Here, we present an optimized protocol to measure virus-induced phosphorylation events with high sensitivity using label free quantification-based phosphoproteomics. Specifically, we describe filter assisted protein digestion (FASP), enrichment of phosphopeptides, mass spectrometry, and subsequent bioinformatic analysis.

For complete details on the use and execution of this protocol, please refer to Hunziker et al. (2022).

BEFORE YOU BEGIN

Mass spectrometry has become the method of choice to systematically analyze highly dynamic phosphorylation changes in an unbiased manner with high sensitivity and resolution (Aebersold and Mann, 2003). Initially, a method based on metabolic labeling of cells with stable isotopes (SILAC) was mostly used (Ong et al., 2002). However, SILAC is limited to three conditions per analysis. Its quantification is fully scan (MS1) based and although it is the most accurate method for quantitative phosphoproteomics, its quantification method leads to higher MS1 spectral complexity and therefore to over-sampling of peptide isotope-variants decreasing the total number of peptides identified (Li et al., 2012; Mertins et al., 2012). Therefore, other quantification techniques such as label free quantification (LFQ) (Huttlin et al., 2010; Lundby et al., 2012, 2013) and chemical labels, for example iTRAQ and TMT (Mertins et al., 2016) have gained popularity. LFQ based methods were shown to be equally accurate compared with isobaric tandem mass tags but to have a higher dynamic detection range (Trinh et al., 2013). Further, LFQ bypasses the need for metabolic or chemical labeling and is therefore the most cost effective (Cox et al., 2014; Neilson et al., 2011). It relies on reproducible chromatographic separations and different computational methods to compare peptide abundances in different conditions.

The method described here (Figure 1) was initially designed to measure influenza A virus (IAV) induced phosphorylation changes. However, it is not limited to IAV but can also be used with other stimuli, such as other viruses, bacteria, hormones, drugs and more. Since our protocol does not need metabolic labeling and works with a low amount of input material (300 µg), cell lines can be substituted by primary tissue and clinical samples. By substituting the databases, this method can be applied to any species and pathogen with an annotated genome. In this protocol, we give an automated alternative for phosphopeptide enrichment adapted from Tape et al. (2014), which allows invariable sample processing of a large number of replicates which further reduces variability



(Cox et al., 2014). Standardized sample preparation also clears the way for inter-laboratory integration of data sets and enables large scale studies. We recommend to do at least five independent replicates per condition.

Generation of virus stocks

⌚ Timing: 14 days

1. Because of low stoichiometry of phosphorylation, high titer infections in a small volume are recommended to maximize infection efficiency. Virus stocks should have high titers and be free of cellular cytokines or other contaminants since these can cause signaling events independent of viral infection. To obtain this, IAV can be grown in 11 day old embryonated chicken eggs. A detailed protocol is described by Brauer and Chen (2015).

CAUTION Always handle viruses under biological safety cabinets with the required biosafety measures in place.

Cultivation of cell line

⌚ Timing: 5 days

2. Thaw human adenocarcinoma A549 cells according to ATCC instructions: <https://www.atcc.org/products/ccl-185#detailed-product-information>
3. Human adenocarcinoma A549 cells are cultured in Dulbecco's modified Eagle medium (DMEM, Life technologies, #41966-029) supplemented with 1% Penicillin/streptomycin (Life technologies, #15140-122) and 10% fetal bovine serum (Life technologies, #10270106) and should be incubated at 37°C 5% CO₂. Cells should be passaged at least two times before starting the protocol.

KEY RESOURCES TABLE

REAGENT or RESOURCE	SOURCE	IDENTIFIER
Virus strains		
Egg grown influenza A virus A/WSN/1933 (H1N1)	This paper	N/A
Chemicals, peptides, and recombinant proteins		
Dulbecco's modified Eagle medium (DMEM)	Life technologies	Cat#41966-029
Penicillin/streptomycin	Life technologies	Cat#15140-122
Fetal bovine serum	Life technologies	Cat#10270106
cOmplete Mini EDTA-free protease inhibitor cocktail	Sigma-Aldrich	Cat#11836170001
PhosSTOP	Sigma-Aldrich	Cat#4906845001
Trypsin Gold, Mass Spectrometry Grade	Promega	Cat#VA9000
MagReSyn Ti-IMAC	ReSyn Biosciences	Cat#MR-TIM005
Synthetic peptides with indexed retention times (iRT) kit	BIOGNOSYS	Cat#Ki-3002-1
Urea (UA)	Sigma-Aldrich	Cat#U5128
Iodoacetamide (IAA)	Sigma-Aldrich	Cat#I6125
Triethylammoniumbicarbonat (TEAB) buffer pH 8.5, 1 M	Sigma-Aldrich	Cat#T7408
Trifluoroacetic acid (TFA)	Sigma-Aldrich	Cat#302031
Formic acid (FA) – for LC-MS	Sigma-Aldrich	Cat#00940
Sodium dodecyl sulfate (SDS)	Sigma-Aldrich	Cat#436143
1,4-Dithiothreitol (DTT)	Sigma-Aldrich	Cat#10708984001
Glycolic acid (GA)	Sigma-Aldrich	Cat#124737
Acetonitrile (ACN) – for LC-MS	Sigma-Aldrich	Cat#1.00029
Tris/HCL	Sigma-Aldrich	Cat#PHG0002

(Continued on next page)

Continued

REAGENT or RESOURCE	SOURCE	IDENTIFIER
Ammonia water (NH ₄ OH 28% aqueous solution)	Sigma-Aldrich	Cat#221228
EtOH 100%	Sigma-Aldrich	Cat#51976
NaCl	Sigma-Aldrich	Cat#S9888
Critical commercial assays		
Qubit Protein Assay Kit	Thermo Fisher Scientific	Cat#Q33211
Experimental models: Cell lines		
Human lung adenocarcinoma A549 cells	ATCC	ATCC CCL-185
Software and algorithms		
MaxQuant software v1.6.23 or higher	Cox et al. (2011) and Cox and Mann (2008)	www.maxquant.org
Uniprot database A/WSN/1933	UniProt	https://www.uniprot.org/uniprot/?query=organism:382835&sort=score ; Uniprot: 382835
Uniprot data base human	UniProt	https://www.uniprot.org/ptomes/UP000005640 ; Proteome ID: UP000005640
Uniprot data base chicken	UniProt	https://www.uniprot.org/ptomes/UP00000539 ; Proteome ID: UP00000539
Other		
Microcon-30 kDa Centrifugal Filter Units with Ultracel-30 membranes	Merck Millipore	Cat#MRCF0R030
T-150 cell culturing flask	TPP	Cat#90151
1.5 mL Eppendorf tubes safe-lock	Eppendorf	Cat#0030121023
p100 cell culture dish	TPP	Cat#93100
Cell scraper	TPP	Cat#99003
Invitrogen™ Countess™ 3 Automated Cell Counter	Fisher Scientific	Cat#16812556
Invitrogen™ Countess™ Cell Counting Chamber Slides	Fisher Scientific	Cat#10399053
Qubit Flex Fluorometer	Thermo Fisher Scientific	Cat#Q33327
Micro centrifuge (1.5–2 mL tubes)	Various suppliers	N/A
500 µL thin-walled PCR tubes	Thermo Fisher Scientific	CAT#AM12225
Parafilm	Sigma-Aldrich	CAT#P7793-1EA
Incubator for cells	Various suppliers	N/A
Biological safety cabinet for cell culture and virus infection	Various suppliers	N/A
Chemical safety cabinet	Various suppliers	N/A
Eppendorf ThermoMixer® F1.5 or equivalent	Eppendorf	Cat#538400001
Glass box for the wet chamber	Fisher Scientific	Cat#11766958
SpeedVac concentrator	Thermo Fisher Scientific	Cat#SPD111V-115
Ultrasonic bath	Various suppliers	N/A
Branson Ultrasonics Sonifier® SFX250 or equivalent dry sonicator	Fisher Scientific	Cat#15569624
Eppendorf ThermoMixer® F1.5 or equivalent	Eppendorf	Cat#5384000012
Computer station with minimum requirements of used MaxQuant version (http://www.coxdocs.org/doku.php?id=maxquant:common:download_and_installation)	Various suppliers	N/A
Optional: KingFisherFlex system	Thermo Fisher Scientific	Cat#A31508
Optional: V-bottom micro tubes with screw cap	Merck	Cat#Z637432-1000EA
Optional: Magnetic separator	Merck	Cat#M1167-1EA
Optional: KingFisher Flex Microtiter deepwell 96 plate	Thermo Fisher Scientific	Cat#95040460
C18 Stage Tips: P200 pipette tips with Empore Disk C18	Merck; 3M	Cat#CLS4154-4X960EA; Cat#2215
Optional: Xcalibur Software to run the mass spectrometer	Thermo Scientific	N/A
Optional: Easy-nLC 1000 HPLC system	Thermo Scientific	N/A
Optional: Nano trap column (Thermo Scientific), 75 µm × 2 cm, packed with Acclaim PepMap100 C18 material, 3 µm, 100 Å	Thermo Scientific	N/A
Optional: Analytical Easy-Spray column, 75 µm × 50 cm, packed with reverse-phase C18 material (Acclaim PepMap RSLC, 2 µm, 100 Å)	Thermo Scientific	N/A

(Continued on next page)

Continued

REAGENT or RESOURCE	SOURCE	IDENTIFIER
Optional: Thermo Scientific™ Orbitrap Fusion™ Tribrid™ mass spectrometer or any other mass spectrometer with high precision MS1 spectrum recording (e.g., Orbitrap)	Thermo Scientific, San Jose, Ca	N/A

△ **CRITICAL:** All chemicals should be of highest purity.

MATERIALS AND EQUIPMENT

- Stop and go extraction (Stage) tip assembly

C18 Stage Tips: P200 pipette tips (Merck, #CLS4154-4X960EA) with Empore Disk C18 (3M, #2215) cores assembled according to [Rappsilber et al. \(2003\)](#).

- Equipment setup mass spectrometer

Thermo Scientific™ Orbitrap Fusion™ Tribrid™ mass spectrometer (Thermo Scientific, San Jose, Ca) connected to an Easy-nLC 1000 HPLC system (Thermo Scientific). Peptides should be stored in a cooled (4°C) autosampler before being loaded on to a nano trap column (Thermo Scientific), 75 µm × 2 cm, packed with Acclaim PepMap100 C18 material, 3 µm, 100 Å. Separation is done with an analytical Easy-Spray column (Thermo Scientific), 75 µm × 50 cm, packed with reverse-phase C18 material (Acclaim PepMap RSLC, 2 µm, 100 Å).

- Cell cultivation medium

Reagent	Final concentration	Amount (555 mL)
Dulbecco's modified Eagle medium	N/A	500 mL
Penicillin /streptomycin	1% (v/v)	5 mL
Fetal bovine serum	10% (v/v)	50 mL

Medium can be stored at 4°C for several weeks.

- SDS lysis buffer

Reagent	Final concentration	Amount (10 mL)
SDS	4% (w/v)	400 mg
Tris/HCL pH 8.2 (1 M)	100 mM	1 mL
cOmplete Mini EDTA free protease inhibitor cocktail		1 tablet
PhosSTOP		1 tablet
DTT	0.1 M	155 mg
ddH ₂ O	N/A	9 mL

Prepare freshly before each use and keep at 4°C. Should be used within 1 day.

△ **CRITICAL:** SDS is corrosive and flammable, when handling DTT use dust mask type N95 (US), eyeshield, faceshield and gloves.

- Urea buffer

Reagent	Final concentration	Amount (10 mL)
Urea	8 M	4.8 g
Tris/HCL (pH 8.2)	100 mM	10 mL

Prepare freshly before each use and keep at 4°C. Use within one day. ~700 µL urea buffer are needed for each sample.

- Alkylation buffer

Reagent	Final concentration	Amount (1 mL)
Iodoacetamide (IAA) (0.5 M)	50 mM	100 µL
Urea buffer		900 µL

Prepare freshly before each use and keep at 4°C. Use within one day. ~100 µL IAA buffer are needed for each sample.

△ CRITICAL: IAA is toxic, use dust mask type N95 (US), eyeshield, faceshield and gloves. Urea and Alkylation buffer have to be prepared freshly and used within a day.

- TEAB buffer

Reagent	Final concentration	Amount (1 mL)
TEAB (1 M, pH 8.5)	50 mM	50 µL
ddH ₂ O		950 µL

Prepare freshly before each use. ~500 µL TEAB buffer are needed for each sample.

△ CRITICAL: Use eyeshields, gloves, multi-purpose combination respirator cartridge (US), type ABEK (EN14387) respirator filter when handling TEAB.

- Loading buffer

Reagent	Final concentration	Amount (50 mL)
Glycolic acid (GA)	1 M	3.8 g
Acetonitrile (ACN)	80% (v/v)	40 mL
Trifluoroacetic acid (TFA)	5% (v/v) aqueous solution	2.5 mL
ddH ₂ O		7.5 mL

Prepare freshly before each use.

△ CRITICAL: GA is corrosive, use eyeshields, faceshields, gloves, respirator cartridge type N100 (US), type P1 (EN143) respirator filter, type P3 (EN 143) respirator cartridges. ACN is highly flammable and TFA is corrosive.

- Wash buffer 1

Reagent	Final concentration	Amount (20 mL)
ACN	80% (v/v)	16 mL
TFA	1% (v/v) aqueous solution	200 µL
ddH ₂ O		3.8 mL

Prepare freshly before each use.

△ **CRITICAL:** ACN is highly flammable and TFA is corrosive.

- Wash buffer 2

Reagent	Final concentration	Amount (20 mL)
ACN	10% (v/v)	2 mL
TFA	0.2% (v/v) aqueous solution	40 µL
ddH ₂ O		17.96 mL

Prepare freshly before each use.

△ **CRITICAL:** ACN is highly flammable and TFA is corrosive.

- Elution buffer

Reagent	Final concentration	Amount (10 mL)
NH ₄ OH 28% aqueous solution	1% (v/v)	360 µL
ddH ₂ O		9.64 mL

Prepare freshly before each use.

△ **CRITICAL:** Corrosive, toxic, dangerous for the environment. Use faceshield, gloves, goggles and multi-purpose combination respirator cartridge (US).

- Buffer 1 Stop and go extraction (Stage) tip clean up

Reagent	Final concentration	Amount (20 mL)
ACN	60% (v/v)	12 mL
TFA	0.1% (v/v) aqueous solution	20 µL
ddH ₂ O		7.98 mL

Buffer can be stored at 15°C–25°C for several weeks.

△ **CRITICAL:** ACN is highly flammable and TFA is corrosive.

- Buffer 2 Stop and go extraction (Stage) tip clean up

Reagent	Final concentration	Amount (20 mL)
ACN	3% (v/v)	600 µL
TFA	0.1% (v/v) aqueous solution	20 µL
ddH ₂ O		19.38 mL

Buffer can be stored at 15°C–25°C for several weeks.

△ **CRITICAL:** ACN is highly flammable and TFA is corrosive.

- MS buffer Stop and go extraction (Stage) tip clean up

Reagent	Final concentration	Amount (20 mL)
ACN	3% (v/v)	600 μ L
Formic acid (FA)	0.1% (v/v) aqueous solution	20 μ L
ddH ₂ O		19.38 mL

Prepare freshly before each use.

△ CRITICAL: ACN is highly flammable and FA is flammable, corrosive and toxic. Handle FA under a chemical hood and prepare freshly shortly before usage.

- Buffers Mass Spectrometry measurement

Reagent	Final concentration	Amount (20 mL)
Mass spectrometer buffer A		
FA	0.1% (v/v)	20 μ L
ddH ₂ O		19.98 mL
Mass spectrometer buffer B		
FA	0.1% (v/v)	20 μ L
ACN		19.98 mL

Buffers can be stored at 15°C–25°C for several days.

Note: Not needed if mass spectrometry measurement is outsourced.

△ CRITICAL: FA is flammable, corrosive and toxic. Handle FA under a chemical hood. ACN is highly flammable.

Alternatives: Any other mass spectrometer with high precision MS1 spectrum recording can be used for measurement (e.g. Orbitrap). MS data analysis can also be done with other software packages allowing label free quantification. In this protocol, we describe the data analysis with MaxQuant, which is an open source program but subjected to license terms.

STEP-BY-STEP METHOD DETAILS

Sample generation: virus infection and cell lysis

⌚ **Timing:** 6 days

△ CRITICAL: The cells and virus should always be handled under sterile conditions in a biological safety cabinet. Prepare at least five independent replicates.

1. Remove medium from cells and wash them once with phosphate salt buffered solution (PBS) (Life technologies, #14190-094).
2. Add 1 mL of 0.25% trypsin-ethylenediaminetetraacetic acid (EDTA) (Life technologies, #25200-056) and incubate them at 37°C 5% CO₂ until cells are detached.
3. Add 9 mL of pre-warmed cultivation medium and mix well.
4. Count cells using a cell counter or Neubauer chamber (Merck, #BR717805-1EA):

Mix 10 μ L of cell solution and 10 μ L 0.4% (w/v) Trypan blue (Thermo Fisher Scientific, #15250-061) and inject into a Neubauer cell counting chamber or an equivalent slide used for a cell counter.

5. Seed 2×10^6 A549 human lung epithelial cells (ATCC, #CCL-185) into a p100 dish (TPP, #93100) in 12 mL cell cultivation medium per dish.
6. Incubate cells at 37°C 5% CO₂ for 24 h.
7. Wash the cells with PBS and incubate them in 12 mL DMEM (Life technologies, #41966-029) without supplements 16 h prior to infection.

△ **CRITICAL:** This step helps to synchronize the cells and get rid of an important part of the serum albumin that is the main contaminant in the final samples (Nakhjavani et al., 2016).

8. Prepare SDS lysis buffer freshly (see [materials and equipment](#)).

△ **CRITICAL:** Prepare SDS lysis buffer freshly for each replicate, always keep it on ice and use within 1 day.

9. Add 3 mL virus inoculum per plate (containing 25 PFU/cell) or up to 3 mL of allantoic liquid from mock-infected eggs as a control in a tube and pre-warm inoculum to 37°C.

△ **CRITICAL:** Always work in a biological safety cabinet when handling viruses. Do not add cold inoculum since this can trigger cellular stress pathways.

10. Suck off serum-free medium from the cells and add the inoculum directly to the cells and leave them at 37°C for 10 min.

Note: Infection time can be varied dependent on your experimental design.

11. After the desired infection time, directly lyse the cells in 400 µL of SDS-lysis buffer per p100 dish (TPP, #93100) and use a cell scraper (TPP, #99003) to remove lysed cells from the plate. Transfer lysate in a fresh 1.5 mL Eppendorf tube (Eppendorf, #0030121023).
12. Put Eppendorf-tubes on ice.
13. Incubate samples at 95°C for 5 min while shaking at 300 rpm in the ThermoMixer (Eppendorf, #538400001) and directly put them on ice again.
14. Briefly sonicate the lysates to reduce viscosity using a dry-sonicator (5 times 15 s pulse with 75% intensity) (Branson Ultrasonics Sonifier® SFX250, FisherScientific, #15569624) and put samples on ice again. [Problem 1](#)
15. Centrifuge at 14,000 × g and 4°C for 5 min to clarify the lysate and transfer lysates into a fresh 1.5 mL Eppendorf tube.

▣ **Pause point:** Store the cell extracts at –80°C until you finished all replicates.

Filter aided sample preparation (FASP) and protein digestion

⌚ **Timing:** 1.5 days

△ **CRITICAL:** Before you start, create a randomized list of your samples where each sample gets a number by chance and treat them randomized.

16. Quantify protein concentration using Qubit Flex Fluorometer (ThermoFisher Scientific, #Q33327) according to manufacturer's protocol: (<https://www.thermofisher.com/order/catalog/product/Q33211#/Q33211>).
 - a. Add the Qubit buffer volume needed in an Eppendorf tube: 199 µL Qubit buffer per sample and 190 µL for each standard (3 in total).
 - b. Then add the Qubit reagent 1:200 (v/v) to the buffer and vortex mixture.

- c. Aliquot 199 μL for samples and 190 μL for standards in Qubit tubes and add 1 μL sample or 10 μL of standard solutions to 500 μL thin-walled PCR tubes.
- d. Vortex mixtures and incubate at 15°C–25°C for 15 min.
- e. Measure according to Qubit instructions starting with the standard solution to calibrate the instrument.

Note: Alternatively, the Invitrogen EZQ Protein Quantitation Kit (#R33200) or any other fluorescent dye based protein quantification method can be used. Biuret methods cannot be used because the lysis buffer contains DTT.

17. Use 300 μg protein for each sample to start.
 18. Prepare all solutions needed:
 - a. UA: 8 M urea in 100 mM Tris/HCl pH 8.2
 - b. IAA solution: 100 μL 0.05 M iodoacetamide in 900 μL UA
 - c. 0.5 M NaCl in ddH₂O
 - d. TEAB: 0.05 M Triethylammoniumbicarbonat in ddH₂O
- △ CRITICAL: UA and IAA solutions must be freshly prepared and used within a day.**
19. Label all tubes, lids and filters with the number from the randomized list of the corresponding sample.
 20. Mix up to 50 μL of sample (containing 300 μg of protein) with 200 μL UA buffer and load onto the filter unit.
- △ CRITICAL: Samples should be at 15°C–25°C before you start centrifuging.**
- a. Centrifuge at 14,000 $\times g$ for 20 min at 15°C–25°C.
 - b. Discard flow-trough. [Problems 2](#) and [3](#)
21. Repeat step 20 until everything is loaded on the filter (in case several steps are needed to load the total amount of protein).
 22. Discard flow-trough.
 23. Add 200 μL of UA to the filter unit.
 - a. Centrifuge at 14,000 $\times g$ for 20 min at 15°C–25°C.
 - b. Discard flow-trough.
 24. Add 100 μL IAA solution (0.05 M) to the filter unit.
 - a. Mix at 600 rpm in the ThermoMixer for 1 min (lid open).
 - b. Centrifuge at 14,000 $\times g$ for 20 min at 15°C–25°C.
 - c. Discard flow-trough.
 25. Add 100 μL of UA to the filter unit.
 - a. Centrifuge at 14,000 $\times g$ for 20 min at 15°C–25°C.
 - b. Discard flow-trough.
 26. Repeat step 25 twice.
 27. Add 100 μL of 0.5 M NaCl to the filter unit.
 - a. Centrifuge at 14,000 $\times g$ for 20 min at 15°C–25°C.
 - b. Discard flow-trough.
 28. Repeat step 27 once.
 29. Add 100 μL of TEAB to the filter unit.
 - a. Centrifuge at 14,000 $\times g$ for 20 min at 15°C–25°C.
 - b. Discard flow-trough.
 30. Repeat step 29 twice.
 31. Transfer the filter units to new collection tubes.

32. Reconstitute 20 μg lyophilized trypsin in 500 μL TEAB.

Δ **CRITICAL:** Make sure that the trypsin is completely dissolved. After adding TEAB, pipette 10 times up and down and incubate the solution for 10 min at 15°C–25°C.

33. Add 120 μL of TEAB with 2% trypsin (5 μg trypsin per sample) to the filter unit.

- a. Mix at 600 rpm in the thermo-mixer for 1 min.
- b. Seal all tube-lids with parafilm.

34. Incubate the units for 16 h at 15°C–25°C in a wet-cell.

Elution and peptide drying

\odot Timing: 4 h

35. Centrifuge the filter units at 14,000 $\times g$ for 20 min at 15°C–25°C.

Δ **CRITICAL:** The flow-through of this step contains the digested proteins.

36. Re-elute the column by adding 80 μL of TEAB.

37. Centrifuge the filter units at 14,000 $\times g$ for 20 min at 15°C–25°C.

38. Transfer 10 μL of each sample into a new 1.5 mL Eppendorf tube for total extract samples and freeze them at -20°C.

\square **Pause point:** Samples can be stored at -20°C before drying.

39. Completely dry the rest of the digested peptides in a SpeedVac condensator at 35°C. This can take 2–3 h.

Δ **CRITICAL:** Partial drying of peptides at this and later steps increases the yield of phosphorylated peptides. However, complete drying may be more reproducible with regard to quantitative analyses. Time for drying can vary between samples and is dependent on factors such as the amount and type of peptides present. [Problem 4](#)

Equilibration of MagReSyn® Ti-IMAC microspheres

\odot Timing: 30 min

40. Prepare all solutions freshly before starting the enrichment:

- a. 70% EtOH in ddH₂O
- b. Loading buffer: 1M glycolic acid in 80% ACN, 5% TFA
- c. Wash buffer 1: aqueous solution of 80% ACN and 1% TFA
- d. Wash buffer 2: aqueous solution of 10% ACN and 0.2% TFA
- e. Elution buffer: 1% NH₄OH in ddH₂O

Δ **CRITICAL:** The equilibration of microspheres should be performed immediately before sample loading. Wait until the samples are completely dry before starting the equilibration procedure. Equilibration of the total amount of microspheres (20 μL / sample) can be done in one tube, indicated amounts of buffers are for one sample.

41. Resuspend MagReSyn® Ti-IMAC thoroughly by vortex mixing or inversion to ensure a homogenous suspension.

42. Transfer 20 μL microspheres per sample to a 2 mL micro tube with a V bottom shape and screw cap.

- a. Place the tube on a magnetic separator and allow microspheres to clear.
 - b. Remove the shipping solution (around 50% of the volume) by aspiration with a pipette and discard.
43. Wash the microspheres in 200 μ L of 70% EtOH with gentle agitation at 900 rpm in the ThermoMixer for 5 min.
- a. Place the tube on the magnetic separator and allow the microspheres to clear.
 - b. Remove the ethanol solution by aspiration with a pipette and discard.
44. Repeat the washing step 43.
45. Wash the microspheres in 100 μ L of ddH₂O (Millipore) with gentle agitation at 900 rpm in the ThermoMixer for 10 min.
- a. Place the tube on the magnetic separator and allow the microspheres to clear.
 - b. Remove the buffer by aspiration with a pipette and discard.
46. Equilibrate the microspheres in 50 μ L loading buffer for 1 min.
- a. Place the tube on the magnetic separator and allow the microspheres to clear.
 - b. Remove the loading buffer by aspiration with a pipette.
47. Repeat step 46 twice for a total number of three equilibrations. After the last one, dissolve microspheres in a total volume equaling the sample number (20 μ L for each sample).
48. Transfer 20 μ L MagReSyn® Ti-IMAC to a 2 mL microcentrifuge for each enrichment.

△ CRITICAL: Microspheres without the shipping solution are half the input volume. After removal of the loading buffer, MagReSyn® Ti-IMAC microspheres are ready for binding the target phosphopeptides.

Phosphopeptide enrichment using magnetic separator

⌚ **Timing:** 3 h

49. Prepare 10% FA solution in a chemical hood. To do so, calculate the amount you need and dilute formic acid 1:10 in ddH₂O.
50. Resuspend dried digested peptides in 100 μ L loading buffer.
51. Sonicate for 5 min in the water bath and shake 5 min in the ThermoMixer at 1000 rpm.
52. Centrifuge briefly at 14,000 \times g and add to the equilibrated MagReSyn® Ti-IMAC microspheres.
53. Incubate for 20 min at 15°C–25°C with continuous mixing at 900 rpm in the ThermoMixer to ensure adequate sample and microsphere interaction.
- a. Place the tube on the magnetic separator and allow the microspheres to clear.
 - b. Remove and discard the coupling supernatant by aspiration with a pipette.
54. Remove unbound sample by washing with 100 μ L loading buffer for 1 min with gentle agitation at 900 rpm in the ThermoMixer.
- a. Place the tube on a magnetic separator and allow microspheres to clear.
 - b. Remove the supernatant and discard.
55. Remove non-specifically bound peptides by adding the microspheres to 100 μ L wash buffer 1 for 2 min with gentle agitation at 900 rpm in the ThermoMixer.
- a. Place the tube on a magnetic separator and allow microspheres to clear.
 - b. Remove the supernatant and discard.
56. Repeat step 55 once.
57. Wash once with 100 μ L wash buffer 2 for 2 min with gentle agitation at 900 rpm in the ThermoMixer.
- a. Place the tube on a magnetic separator and allow microspheres to clear.
 - b. Remove the supernatant and discard.

Note: Washing with wash buffer 2 leads to better removal of hydrophilic peptides.

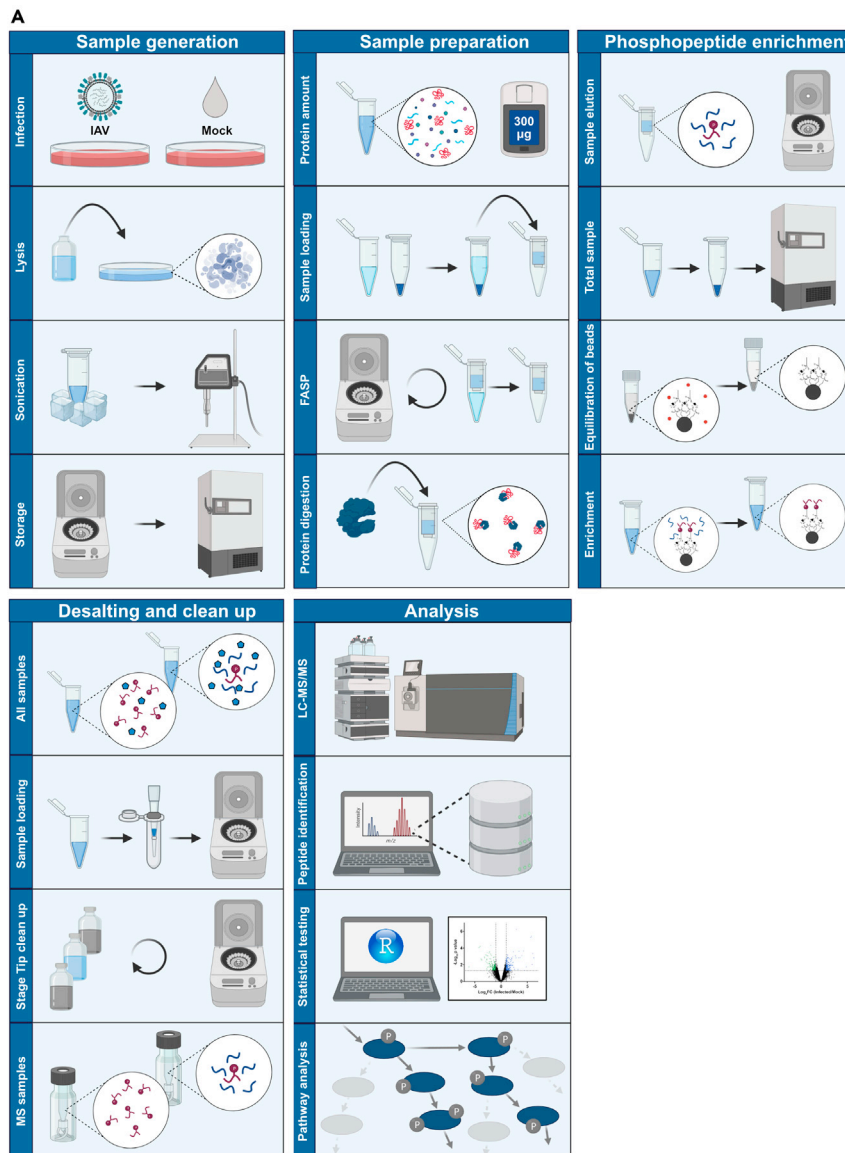


Figure 1. Graphical procedure overview

(A) Graphical overview of the different steps of the protocol.

58. Elute the bound phosphopeptides from the microspheres by adding 80 μ L elution buffer for 15 min at 900 rpm in the ThermoMixer.
59. Repeat step 58 twice for a final elution volume of 240 μ L.
60. Place the tube on the magnetic separator and allow the microspheres to clear.
61. Remove the eluate containing the phosphopeptides and transfer to a new tube.
62. Add 60 μ L of 10% FA to the 240 μ L eluate to acidify the solution.

△ CRITICAL: Prepare formic acid solution freshly in a chemical safety hood before using it. Phosphopeptides are not stable under basic conditions. Therefore, the solutions should be acidified immediately after elution.

63. Dry peptides from phosphoenriched and total samples using SpeedVac condensator at 35°C (1–2 h).

Table 1. Plates with their contents used for the automated phosphopeptide enrichment procedure

KingFisher Flex Microtiter deepwell 96 plate order		
Plate number and name	μL/well	Buffer
#1 Tip plate		
#2 Equilibrated Ti-IMAC microspheres	500	In 100% ACN
#3 Microsphere wash	500	Loading buffer
#4 Sample	200	In loading buffer
#5 Wash 1	500	Loading buffer
#6 Wash 2	500	Wash buffer 1
#7 Wash 3	500	Wash buffer 2
#8 Elution	200	Elution buffer

64. Reconstitute enriched peptides in 150 μL 3% ACN; 0.1% TFA.
65. Sonicate peptides for 5 min in the water bath and shake them 5 min in the ThermoMixer at 1000 rpm.
66. Centrifuge briefly at 140,000 × *g*.

⏸ Pause point: If you cannot directly continue with the desalting step, freeze samples at –20°C before drying or after reconstitution in 150 μL 3% ACN; 0.1% TFA.

Phosphoenrichment using the KingFisher Flex system

⌚ Timing: 1 h

67. After equilibration, transfer 20 μL MagReSyn® Ti-IMAC to a well in a KingFisher Flex Microtiter deepwell 96 plate and add 480 μL 100% ACN per well.
68. Prepare all solutions according to step 40.
69. Reconstitute dried peptides in 200 μL loading buffer.
70. Sonicate in the water bath for 5 min.
71. Mix solution well at 1000 rpm in the ThermoMixer for 1 min.
72. Transfer each sample to a separate well of a KingFisher Flex Microtiter deepwell 96 plate.

⚠ CRITICAL: If you do not use each well, make sure that you use the same wells in each plate.

73. Prepare all KingFisher Flex Microtiter deepwell 96 plate with the amount and solution per well indicated in Table 1. Insert plates according to number into the KingFisher Flex instrument.
74. Use the KingFisher Flex instrument with the following steps and timing (in total 42 min, Figure 2A). After elution, release beads into plate 2 (10 s release time) and tips in plate 1.
75. Transfer eluted peptides from each well of plate 8 to a separate 1.5 mL Eppendorf tube.
76. Add 50 μL of 10% FA to each sample.

⚠ CRITICAL: Prepare formic acid solution freshly in a chemical safety hood before using it. Phosphopeptides are not stable under basic conditions. Therefore, the solutions should be acidified immediately after elution.

77. Dry peptides from phosphoenriched and total samples using SpeedVac condensator at 35°C (1–2 h).
78. Reconstitute enriched peptides in 150 μL 3% ACN; 0.1% TFA.
79. Sonicate peptides for 5 min in the water bath and shake them 5 min in the ThermoMixer at 1000 rpm.
80. Centrifuge briefly at 14,000 × *g*.

A

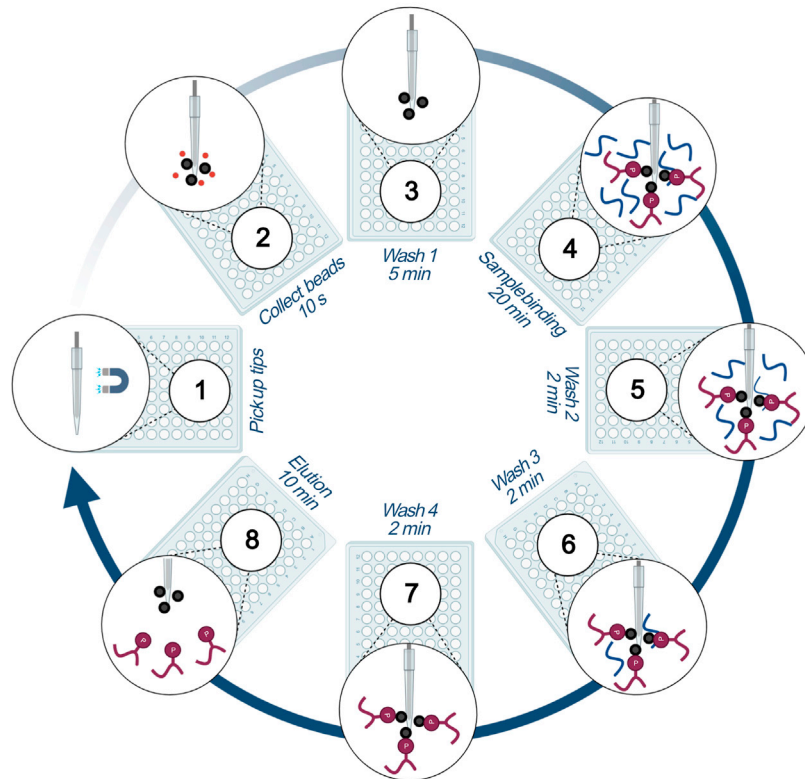


Figure 2. Graphical overview of the automated phosphopeptide enrichment procedure

(A) Graphical overview of the automated phosphopeptide enrichment.

▣ **Pause point:** If you cannot directly continue with the desalting step, freeze samples at -20°C before drying or after reconstitution in $150\ \mu\text{L}$ 3% ACN; 0.1% TFA.

Stop and go extraction (Stage) tip clean up

⌚ **Timing:** 3–7 h

81. Put Stage tips into a 2 mL Eppendorf tube with adaptors to hold Stage tips in place. Label tubes and Stage tips with sample number. Prepare two sets of fresh 1.5 mL Eppendorf tubes for phosphoenriched and total samples. Label the lids and the tubes.

⚠ **CRITICAL:** When working with Stage tips, visually check after each centrifugation step that the total amount of liquid passed the tip. If not, repeat centrifugation step for Stage tips with remaining liquid. Make sure that no Stage tip dries out during the procedure.

82. Wet Stage tip with $150\ \mu\text{L}$ 100% ACN.
 - a. Centrifuge at $2,000 \times g$ for 1 min.
 - b. Discard flow-trough.
83. Equilibrate Stage tip with $150\ \mu\text{L}$ 60% ACN; 0.1% TFA.
 - a. Centrifuge at $2,000 \times g$ for 1 min.
 - b. Discard flow-trough.
84. Equilibrate Stage tip with $150\ \mu\text{L}$ 3% ACN; 0.1% TFA.
 - a. Centrifuge at $2,000 \times g$ for 1 min.

- b. Discard flow-trough.
- 85. Repeat step 84 once.
- 86. Put filters in fresh 1.5 mL Eppendorf tubes.
- 87. Load sample on Stage tip.

△ **CRITICAL:** Sample must have same pH as buffer in the second equilibration step. Concentration of organic solvent should be below 5% and is critical for peptide binding to the C18 material.

- 88. Centrifuge at $2,000 \times g$ for 1.5 min.

△ **CRITICAL:** Do not shorten this centrifugation step. Collect flow-through and keep at 4°C in case peptides do not bind.

- 89. Put filters back in 2 mL Eppendorf tubes.
- 90. Wash with 150 μL 3% ACN; 0.1% TFA.
 - a. Centrifuge at $2,000 \times g$ for 1 min.
 - b. Discard flow-trough.
- 91. Repeat step 90 twice for a total of three wash steps.
- 92. Put filters in fresh 1.5 mL Eppendorf tubes.
- 93. Elute sample with 150 μL 60% ACN; 0.1% TFA.
- 94. Centrifuge at $2,000 \times g$ for 1.5 min.

△ **CRITICAL:** Do not shorten this centrifugation step.

- 95. Collect flow-through in a new 1.5 mL Eppendorf tube.
- 96. Completely dry desalted peptides at 35°C using a SpeedVac condensator (2–6 h).

▣ **Pause point:** If peptides do not dry completely on the same day freeze at -20°C and continue drying the next day.

- 97. Reconstitute phosphoenriched samples in 10 μL and total samples in 20 μL of 3% ACN; 0.1% FA.
- 98. Sonicate for 5 min in the water bath and shake 5 min in the ThermoMixer at 1000 rpm.
- 99. Centrifuge briefly at $14,000 \times g$.

▣ **Pause point:** Freeze at -20°C or directly proceed. [Problems 5, 6, and 7](#)

Analysis of peptides using mass spectrometry

If mass spectrometry measurements are outsourced to a specialized facility, skip this paragraph and directly continue with LFQ-based quantification of phosphorylation changes.

△ **CRITICAL:** Mass spectrometers are highly sensitive instruments and should be maintained and used according to the manufacturer guidelines. This varies from instrument to instrument. Before you start using a mass spectrometer, always seek guidance of an expert and make sure the instrument is well maintained and properly calibrated.

- 100. Transfer 6 μL of sample in a mass spectrometry tube.

△ **CRITICAL:** Increase fill volume if sample stays longer than 12 h in the mass spectrometer's autosampler before being measured to ensure enough sample volume with regard to evaporation.

Table 2. Gradient used during mass spectrometry analysis of phospho-enriched samples

LC gradient for phospho-enriched samples			
Time	Duration	% of buffer B	Flow (nL/min)
0 min	0 min	2	300
2 min	2 min	2	300
122 min	120 min	25	300
132 min	10 min	35	300
142 min	10 min	95	300

101. Spike samples with iRTs (BIOGNOSYS) with a dilution of 1:60 (v/v) directly before the measurement:
 - a. Vortex iRT buffer for 1 min
 - b. Add 50 μ L of buffer to the iRT peptides
 - c. Sonicate in water bath for 1 min
 - d. Vortex and add to samples
102. Select the following parameters to measure on a Thermo Scientific™ Orbitrap Fusion™ Tribrid™ mass spectrometer coupled to an Easy-nLC 1000 HPLC system (Thermo Scientific):
 - a. Load 5 μ L of peptides on the column from a cooled (4°C) autosampler.
 - b. Buffer A: 0.1% FA in H₂O
 - c. Buffer B: 0.1% FA in ACN
103. For the measurement of phospho-enriched samples, apply the LC gradient described in [Table 2](#) and select the following parameters:
 - a. Acquire MS spectra in the Orbitrap mass analyzer with a mass range of 350–1800 (m/z), a resolution of 120,000 and a maximum injection time of 50 ms.
 - b. Acquire higher energy collisional dissociation (HCD) spectra in the ion trap mass analyzer using a normalized collision energy of 32% with a precursor ion isolation width of 2.0 (m/z) and a maximum injection time of 150 ms.
 - c. Set AGC target value = 2e4.
 - d. Enable charge state screening.
 - e. Include charge states 2–7.
 - f. Set the signal intensities threshold = 5e3.
 - g. Exclude precursor masses already selected for MS/MS acquisition for further selection during 30 s.
104. For total protein samples, apply the LC gradient in [Table 3](#) and select the following parameters:
 - a. Acquire MS spectra in the Orbitrap mass analyzer with a mass range of 300–2000 (m/z), with a resolution of 120,000, and a maximum injection time of 50 ms.
 - b. Acquire HCD spectra in the ion trap using a normalized collision energy of 30% with an isolation window of 1.6 (m/z) and a maximum injection time of 80 ms.
 - c. Set AGC target value = 8e3.
 - d. Set the intensity threshold = 5e3.
 - e. Set dynamic exclusion duration = 25 s. [Problem 8](#)

LFQ-based quantification of phosphorylation changes

⌚ Timing: 12 h

The data analysis can be performed with every software that supports label free based quantification of post-translational protein modifications such as Progenesis Q1 (Waters, https://www.waters.com/waters/de_CH/ProgenesisQ1/nav.htm?locale=de_CH&cid=134790652). Here, we describe in detail the analysis workflow using the open source software MaxQuant. MaxQuant adds known contaminants to the fast file and generates decoy hits for the false discovery rate (FDR) estimation. Your

Table 3. Gradient during mass spectrometry analysis of total protein extracts

LC gradient for total protein samples			
Time	Duration	% of buffer B	Flow (nL/min)
0 min	0 min	2	300
120 min	120 min	25	300
130 min	10 min	35	300
140 min	10 min	95	300

data base is therefore not allowed to have any decoy entries. MaxQuant is coupled to the search engine Andromeda provided together with MaxQuant.

105. Install MaxQuant on your computer.
106. Open MaxQuant folder and open Andromeda executable file (.exe).
107. Make sure that the database containing all annotated proteins of the organism you used is available by default in Andromeda. [Problem 9](#)
108. Load either folder containing raw files of phosphoenriched or total samples into the software.

△ **CRITICAL:** Analyze phosphoenriched and total samples separately.

109. Set experiment choosing “no fractions”.

Note: Only choose fractionation if your samples were obtained from a gel-based pre-fractionation.

110. Group specific parameters: Choose cysteine carbamidomethylation as fixed modification.

Note: Fixed modifications occur on every specified amino acid and are often artificially introduced by sample preparation. Cysteine carbamidomethylation is introduced to prevent disulfide bridges.

111. As variable modification, select protein N-terminal acetylation, methionine oxidation, N-terminal glutamate to pyroglutamate conversion and phosphorylation.

Note: Variable modifications increase the *in silico* peptide database. Only choose the ones necessary to keep computational time as short as possible.

112. Choose modification “phopsho STY” for phosphoenriched but not for total samples.
113. Choose label-free quantification.
114. Select digestion enzyme Trypsin/P.
115. Allow up to two missed cleavages.
116. Select First search.
117. Set fragment mass tolerance to 20 ppm.
118. Set precursor ion mass tolerance to 8 ppm.
119. Use sequences as global parameter: Minimum one unique peptide and a minimum of seven amino acids per identified peptide.

Note: If a peptide contains less than 7 or more than 9 amino acids it cannot be unique and is therefore not informative. Choose a value between 7 and 9.

120. MS/MS and sequence: Choose your created database.
121. Identifier: Up to first space - click identifier - identifierParseRule ([^]*).

Table 4. Pathway analysis tools suitable for follow up analysis of the created phosphoproteomics data set

Open source application	Source	References
WEB-based Gene Set Analysis Tool kit	www.WebGestalt.org	Wang et al. (2017)
DAVID Bioinformatics Resources	https://david.ncifcrf.gov	Huang da et al. (2009)
PhosphoPath (Cytoscape App)	http://apps.cytoscape.org/apps/phosphopath	Raaijmakers et al. (2015)
Panther	http://pantherdb.org/	Mi et al. (2019)

△ **CRITICAL:** Parse rules are applied to the FASTA sequence header. This parse rule applies for FASTA sequences from Uniprot. Adjust your parse rule accordingly.

122. Identification and quantification: For identification use a protein FDR of 0.05.

123. Miscellaneous: Choose Re-Quantify.

Note: Re-quantify allows peaks with no labeled pair to be re-searched based on their location or retention time.

124. Go to advanced and choose “Match between runs”.

Note: Allows information on identification from one run to be used in another run searching for peptide peaks closely located in the same retention time range.

125. Start analysis and check if steps are running fine in the performance menu.

126. The result will be saved as text files in the same folder as your raw files in a folder called “combined”. proteinGroups.txt for total samples and Phospho(STY)sites.txt for phosphoenriched samples. To see first quality control data, open the PTXQC report. [Problem 10](#)

127. Exported lists of differently phosphorylated factors (p value ≤ 0.05 and $\log_2FC \geq 1$ or ≤ -1) and total identified factors as background list can be submitted to further analysis tools ([Table 4](#)).

EXPECTED OUTCOMES

Using this protocol, phosphopeptide enrichment yielded 85% or 95% enrichment efficiency for manual respectively automated enrichment procedure ([Figure 3A](#)). We identified 7930 unique phosphopeptides belonging to 2991 phosphoproteins ([Figure 3B](#)). Phosphorylation of 9144 serine, 1335 threonine and 136 tyrosine were measured ([Figure 3C](#)) of which a substantial part was significantly changed between mock-infected and IAV infected conditions (p value ≤ 0.05 , $\log_2FC \geq 1$ or ≤ -1) ([Figure 3D](#)). Comparing five different IAV subtypes allowed us to find phosphorylation sites equally or uniquely altered by different IAV strains ([Figure 3E](#)) indicating that the presented workflow allows a highly reproducible measurement of phosphorylation changes within minutes of infection. Obtained results can be further analyzed, for example with the Cytoscape plugin PhosphoPath ([Raaijmakers et al., 2015](#)), which analyses the involvement of the found phosphochanges in signaling pathways with respect to annotated phosphosites ([Figure 3F](#)).

LIMITATIONS

During sample preparation for LFI experiments, each sample has to be processed individually. Great care must be taken during sample preparation in order to not introduce variability. To overcome this caveat, automated versions of preparation steps should be considered. In this protocol, we describe an automated alternative for phosphopeptide enrichment adapted from [Tape et al. \(2014\)](#) which allows invariable sample processing of a large number of replicates to reduce variability. Standardized sample preparation also clears the way for inter-laboratory integration of data sets and enables large scale studies. We recommend to do at least five independent replicates per condition. One must consider that a LFI based phosphoproteomics experiment can be more

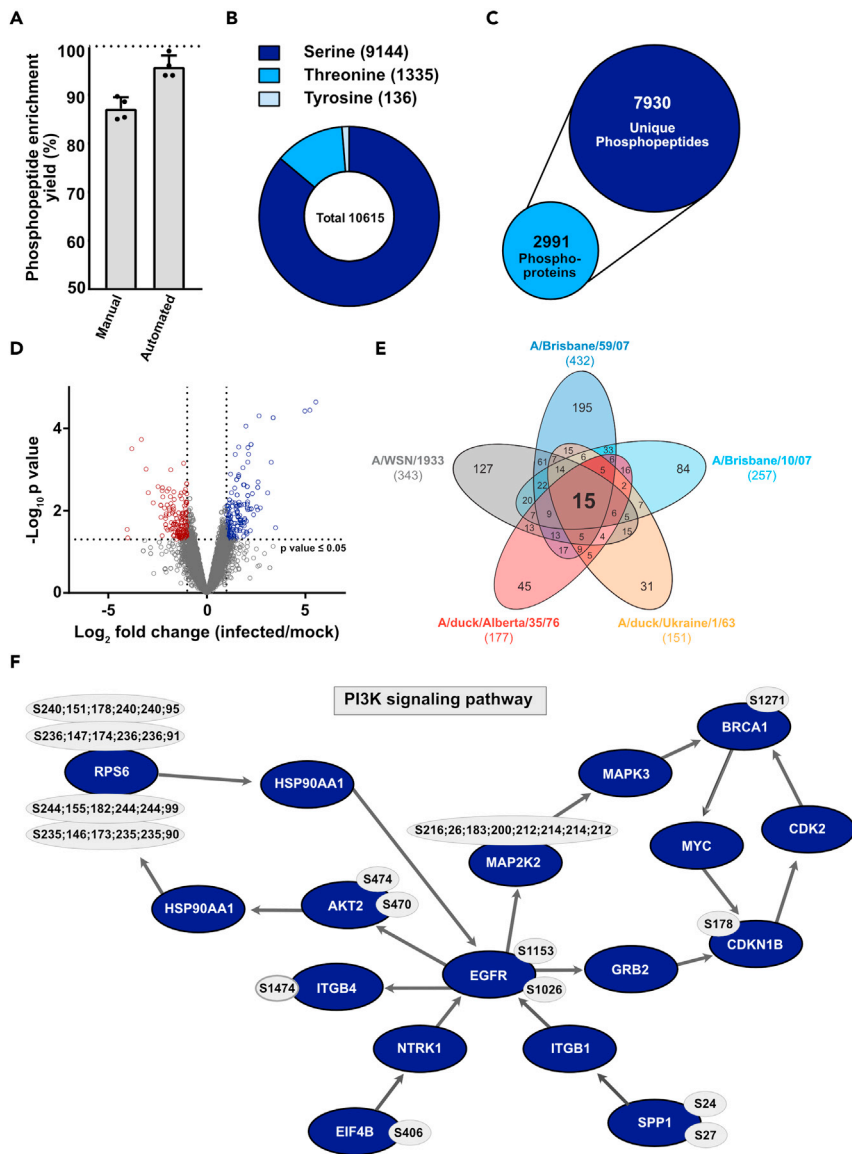


Figure 3. Anticipated results

(A) Phosphopeptide enrichment yield calculated using Scaffold PTM (version 4.0, Proteome Software, Portland USA).

Data are means \pm s.d. from $n = 4$ independent experiments.

(B) Depiction of phosphorylation acceptor site proportion.

(C) Depiction of total amount of identified phosphoproteins and unique phosphopeptides.

(D) Distribution of changes in cellular phosphorylation after 10 min of infection with A/WSN/1933 (25 PFU/cell) are shown. \log_2 fold changes in phosphorylation of the identified phosphopeptides are presented in relation to their p value. Phosphopeptides with lower abundance in mock-infected versus infected samples are located in the upper left panel and significant ones are stained in red (p value ≤ 0.05 , $\log_2 FC \leq -1$). Hyper-phosphorylated peptides are located in the upper right panel, significant ones are highlighted in blue (p value ≤ 0.05 , $\log_2 FC \geq 1$). Horizontal dotted lines show \log_2 fold change cut-off of ≥ 1 or ≤ -1 .

(E) For the Venn-diagram, significantly changing phosphopeptides were used (p value ≤ 0.05 , $\log_2 FC \geq 1$ or ≤ -1). Number in brackets indicate total number of phosphopeptides fulfilling the mentioned criteria.

(F) Significantly changing phosphosites (p value ≤ 0.05 , $\log_2 FC \geq 1$ or ≤ -1) during A/WSN/1933 infection were mapped to pathways with the Cytoscape plugin PhosphoPath using all identified peptides as background list. Factors and their IAV-responsive phosphosites shown to be relevant for the PI3K signaling pathway (Wikipathways) are shown in blue and grey circles respectively (PhosphoSitePlus, BioGrid).

time consuming compared to label based methods since each sample has to be measured individually by mass spectrometry. LFQ quantification is based on comparing peptide abundances between separately measured conditions and missing values between runs can be an issue during data analysis. However, this can be minimized with a robust and reproducible workflow and adequate computational analysis tools presented in this protocol.

TROUBLESHOOTING

Problem 1

Samples are still viscous after sonication.

Potential solution

The DNA content is too high. Sonicate multiple times until you can properly pipette the solution.

Problem 2

Some liquid remains on the filter after 20 min of centrifugation.

Potential solution

Volumes added were most likely too high. When liquid is still going through, increase centrifugation duration for samples with increased backpressure but not for the others, filters should never dry out completely.

Problem 3

No liquid goes through the filter

Potential solution

It might be that the loaded protein amount is too high (max. 500 µg protein), sample is too viscous or sample is too cold. (1) Dilute your sample with urea buffer or/and sonicate again before loading onto the filter again. (2) Let samples warm up to 15°C–25°C before you start the FASP procedure.

Problem 4

Some samples do not fully dry in the SpeedVac condensator.

Potential solution

There is a vacuum leakage. (1) Check vacuum pump. (2) Empty condenser flask and replace it by an empty and dry one. (3) Check cover seal of the condenser flask or the machine itself.

Problem 5

No more liquid goes through the Stage tip.

Potential solution

It is likely that particles in the sample clog the Stage tip. Distribute your sample to multiple Stage tips with larger diameter.

Problem 6

Peptides are not binding C18 Stage tip and run through.

Potential solution

Concentration of organic solvent higher than 5% will abolish binding of most or all peptides. Check your buffers and repeat Stage tip clean up with lower concentration of organic solvent.

Problem 7

Stage tip dried out.

Potential solution

There were too many samples processed at the same time and/or sample processing was too slow. If a Stage tip dried out before loading the sample, equilibration procedure must be repeated. If it happens after sample loading, immediately add some liquid to the filter.

Problem 8

No phosphopeptides are detected.

Potential solution

It might be that there are not enough abundant phosphopeptides in the sample due to low MOI infection or because the processing or mass spectrometry measurement did not work. (1) Repeat digestion with a standard phospho-protein and measure without enrichment by mass spectrometry to ensure that your digestion protocol works. (2) Then, enrich sample for the standard phosphopeptide and measure to see if enrichment worked. (3) Repeat Stage tip clean up with enriched phosphopeptides of the standard phospho-protein to validate your protocol and measure. (4) Measure standard phospho-peptides to validate that the mass spectrometry measurement works. (5) If your protocols work, repeat your experiment using a higher MOI for infection.

Problem 9

Andromeda does not have a database of the used organism or digestion enzyme.

Potential solution

You can add proteome databases of any organism with an annotated genome. To do so, open the Andromeda.exe file in the MaxQuant folder and select sequences or enzymes and "+". You can rename your database and choose the organism or enzyme you want to add to the Andromeda default menu.

Problem 10

MaxQuant gives an error.

Potential solution

Go to www.maxquant.org for troubleshooting.

RESOURCE AVAILABILITY

Lead contact

Further information and requests for resources and reagents should be directed to and will be fulfilled by the lead contact, Silke Stertz Ph.D., stertz.silke@virology.uzh.ch

Materials availability

No new material was created in this study.

Data and code availability

Data sets generated during this study will be available in Hunziker et al. (Cell Reports, revised manuscript under review) upon its publication.

ACKNOWLEDGEMENTS

This study was supported by the Swiss National Science Foundation (grants 31003A_156805 and 31003A_176170 to S.S.) and by University of Zurich through the Candoc Forschungskredit (Project K-41902-0 to A.H.). We thank Peter Gehrig and Jonas Grossmann from the Functional Genomic Center Zurich for their input and support. Figures were created with BioRender.com.

AUTHOR CONTRIBUTIONS

A.H. designed and conducted the experiments, analyzed data and wrote the manuscript. S.S. acquired funding, planned and supervised the work of this study and co-wrote the paper.

DECLARATION OF INTERESTS

The authors declare no competing interests.

REFERENCES

- Aebersold, R., and Mann, M. (2003). Mass spectrometry-based proteomics. *Nature* 422, 198–207.
- Brauer, R., and Chen, P. (2015). Influenza virus propagation in embryonated chicken eggs. *J. Vis. Exp.* <https://doi.org/10.3791/52421>.
- Cox, J., Hein, M.Y., Lubner, C.A., Paron, I., Nagaraj, N., and Mann, M. (2014). Accurate proteome-wide label-free quantification by delayed normalization and maximal peptide ratio extraction, termed MaxLFQ. *Mol. Cell. Proteomics* 13, 2513–2526.
- Cox, J., and Mann, M. (2008). MaxQuant enables high peptide identification rates, individualized p.p.b.-range mass accuracies and proteome-wide protein quantification. *Nat. Biotechnol.* 26, 1367–1372.
- Cox, J., Neuhauser, N., Michalski, A., Scheltema, R.A., Olsen, J.V., and Mann, M. (2011). Andromeda: a peptide search engine integrated into the MaxQuant environment. *J. Proteome Res.* 10, 1794–1805.
- Huang da, W., Sherman, B.T., and Lempicki, R.A. (2009). Systematic and integrative analysis of large gene lists using DAVID bioinformatics resources. *Nat. Protoc.* 4, 44–57.
- Hunziker, A., Glas, I., Pohl, M.O., and Stertz, S. (2022). Phosphoproteomic profiling of influenza virus entry reveals infection-triggered filopodia induction counteracted by dynamic cortactin phosphorylation. *Cell Reports* 38, 52211–1247(22) 00018–3. [10.1016/j.celrep.2022.110306](https://doi.org/10.1016/j.celrep.2022.110306).
- Huttlin, E.L., Jedrychowski, M.P., Elias, J.E., Goswami, T., Rad, R., Beausoleil, S.A., Villen, J., Haas, W., Sowa, M.E., and Gygi, S.P. (2010). A tissue-specific atlas of mouse protein phosphorylation and expression. *Cell* 143, 1174–1189.
- Li, Z., Adams, R.M., Chourey, K., Hurst, G.B., Hettich, R.L., and Pan, C. (2012). Systematic comparison of label-free, metabolic labeling, and isobaric chemical labeling for quantitative proteomics on LTQ Orbitrap Velos. *J. Proteome Res.* 11, 1582–1590.
- Lundby, A., Andersen, M.N., Steffensen, A.B., Horn, H., Kelstrup, C.D., Francavilla, C., Jensen, L.J., Schmitt, N., Thomsen, M.B., and Olsen, J.V. (2013). In vivo phosphoproteomics analysis reveals the cardiac targets of beta-adrenergic receptor signaling. *Sci. Signal.* 6, rs11.
- Lundby, A., Secher, A., Lage, K., Nordsborg, N.B., Dmytryiev, A., Lundby, C., and Olsen, J.V. (2012). Quantitative maps of protein phosphorylation sites across 14 different rat organs and tissues. *Nat. Commun.* 3, 876.
- Mertins, P., Mani, D.R., Ruggles, K.V., Gillette, M.A., Clauser, K.R., Wang, P., Wang, X., Qiao, J.W., Cao, S., Petralia, F., et al. (2016). Proteogenomics connects somatic mutations to signalling in breast cancer. *Nature* 534, 55–62.
- Mertins, P., Udeshi, N.D., Clauser, K.R., Mani, D.R., Patel, J., Ong, S.E., Jaffe, J.D., and Carr, S.A. (2012). iTRAQ labeling is superior to mTRAQ for quantitative global proteomics and phosphoproteomics. *Mol. Cell. Proteomics* 11, M111 014423.
- Mi, H., Muruganujan, A., Huang, X., Ebert, D., Mills, C., Guo, X., and Thomas, P.D. (2019). Protocol Update for large-scale genome and gene function analysis with the PANTHER classification system (v.14.0). *Nat. Protoc.* 14, 703–721.
- Nakhjavani, M., Nikounezhad, N., Ashtarinezhad, A., and Shirazi, F.H. (2016). Human lung carcinoma reaction against metabolic serum deficiency stress. *Iran J. Pharm. Res.* 15, 817–823.
- Neilson, K.A., Ali, N.A., Muralidharan, S., Mirzaei, M., Mariani, M., Assadourian, G., Lee, A., van Sluyter, S.C., and Haynes, P.A. (2011). Less label, more free: approaches in label-free quantitative mass spectrometry. *Proteomics* 11, 535–553.
- Ong, S.E., Blagoev, B., Kratchmarova, I., Kristensen, D.B., Steen, H., Pandey, A., and MANN, M. (2002). Stable isotope labeling by amino acids in cell culture, SILAC, as a simple and accurate approach to expression proteomics. *Mol. Cell. Proteomics* 1, 376–386.
- Raaijmakers, L.M., Giansanti, P., Possik, P.A., Mueller, J., peeper, D.S., Heck, A.J., and Altaalar, A.F. (2015). PhosphoPath: visualization of phosphosite-centric dynamics in temporal molecular networks. *J. Proteome Res.* 14, 4332–4341.
- Rappsilber, J., Ishihama, Y., and Mann, M. (2003). Stop and go extraction tips for matrix-assisted laser desorption/ionization, nanoelectrospray, and LC/MS sample pretreatment in proteomics. *Anal. Chem.* 75, 663–670.
- Tape, C.J., Worboys, J.D., Sinclair, J., Gourlay, R., VOGT, J., McMahon, K.M., Trost, M., Lauffenburger, D.A., Lamont, D.J., and Jorgensen, C. (2014). Reproducible automated phosphopeptide enrichment using magnetic TiO₂ and Ti-IMAC. *Anal. Chem.* 86, 10296–10302.
- Trinh, H.V., Grossmann, J., Gehrig, P., Roschitzki, B., Schlapbach, R., Greber, U.F., and Hemmi, S. (2013). iTRAQ-based and label-free proteomics approaches for studies of human adenovirus infections. *Int. J. Proteomics* 2013, 581862.
- Wang, J., Vasaikar, S., Shi, Z., Greer, M., and Zhang, B. (2017). WebGestalt 2017: a more comprehensive, powerful, flexible and interactive gene set enrichment analysis toolkit. *Nucleic Acids Res.* 45, W130–W137.