


# Exercise and aerobic capacity in individuals with spinal cord injury: A systematic review with meta-analysis and meta-regression

## Journal Article

### Author(s):

Hodgkiss, Daniel D.; Bhangu, Gurjeet S.; Lunny, Carole; [Jutzeler, Catherine](#) ; Chiou, Shin-Yi; Walter, Matthias; Luca, Samuel J.E.; Krassioukov, Andrei V.; Nightingale, Tom E.

### Publication date:

2023-11

### Permanent link:

<https://doi.org/10.3929/ethz-b-000646958>

### Rights / license:

[Creative Commons Attribution 4.0 International](#)

### Originally published in:

PLoS Medicine 20(11), <https://doi.org/10.1371/journal.pmed.1004082>

### Funding acknowledgement:

186101 - Precision-Medicine for Neurological Disorders: Harnessing the Power of Big Data and Machine Learning for Biomarker Discovery and Drug Repositioning Strategies (SNF)

RESEARCH ARTICLE

# Exercise and aerobic capacity in individuals with spinal cord injury: A systematic review with meta-analysis and meta-regression

Daniel D. Hodgkiss<sup>1</sup>, Gurjeet S. Bhangu<sup>2,3</sup>, Carole Lunny<sup>4</sup>, Catherine R. Jutzeler<sup>5,6</sup>, Shin-Yi Chiou<sup>1,7,8,9</sup>, Matthias Walter<sup>2,10</sup>, Samuel J. E. Lucas<sup>1,7</sup>, Andrei V. Krassioukov<sup>2,11,12</sup>, Tom E. Nightingale<sup>1,2,9\*</sup>

**1** School of Sport, Exercise and Rehabilitation Sciences, University of Birmingham, Birmingham, United Kingdom, **2** International Collaboration on Repair Discoveries (ICORD), University of British Columbia, Vancouver, Canada, **3** MD Undergraduate Program, Faculty of Medicine, University of British Columbia, Vancouver, Canada, **4** Knowledge Translation Program, Li Ka Shing Knowledge Institute, St. Michael's Hospital, Toronto, and University of British Columbia, Vancouver, Canada, **5** Department of Health Sciences and Technology, ETH Zurich, Zurich, Switzerland, **6** Schulthess Clinic, Zurich, Switzerland, **7** Centre for Human Brain Health, University of Birmingham, Birmingham, United Kingdom, **8** MRC Versus Arthritis Centre for Musculoskeletal Ageing Research, University of Birmingham, Birmingham, United Kingdom, **9** Centre for Trauma Science Research, University of Birmingham, Birmingham, United Kingdom, **10** Department of Urology, University Hospital Basel, University of Basel, Basel, Switzerland, **11** Department of Medicine, Division of Physical Medicine and Rehabilitation, University of British Columbia, Vancouver, Canada, **12** GF Strong Rehabilitation Centre, Vancouver Coastal Health, Vancouver, Canada

\* [T.E.Nightingale@bham.ac.uk](mailto:T.E.Nightingale@bham.ac.uk)



**OPEN ACCESS**

**Citation:** Hodgkiss DD, Bhangu GS, Lunny C, Jutzeler CR, Chiou S-Y, Walter M, et al. (2023) Exercise and aerobic capacity in individuals with spinal cord injury: A systematic review with meta-analysis and meta-regression. *PLoS Med* 20(11): e1004082. <https://doi.org/10.1371/journal.pmed.1004082>

**Academic Editor:** Martin Schreiber, Oregon Health and Science University, UNITED STATES

**Received:** July 28, 2022

**Accepted:** October 30, 2023

**Published:** November 27, 2023

**Peer Review History:** PLOS recognizes the benefits of transparency in the peer review process; therefore, we enable the publication of all of the content of peer review and author responses alongside final, published articles. The editorial history of this article is available here: <https://doi.org/10.1371/journal.pmed.1004082>

**Copyright:** © 2023 Hodgkiss et al. This is an open access article distributed under the terms of the [Creative Commons Attribution License](https://creativecommons.org/licenses/by/4.0/), which permits unrestricted use, distribution, and reproduction in any medium, provided the original author and source are credited.

**Data Availability Statement:** All code/scripts and data used for the analysis are available at <https://github.com/jutzca/Exercise-and-fitness-in-SCI>

## Abstract

### Background

A low level of cardiorespiratory fitness [CRF; defined as peak oxygen uptake ( $\dot{V}O_{2peak}$ ) or peak power output (PPO)] is a widely reported consequence of spinal cord injury (SCI) and a major risk factor associated with chronic disease. However, CRF can be modified by exercise. This systematic review with meta-analysis and meta-regression aimed to assess whether certain SCI characteristics and/or specific exercise considerations are moderators of changes in CRF.

### Methods and findings

Databases (MEDLINE, EMBASE, CENTRAL, and Web of Science) were searched from inception to March 2023. A primary meta-analysis was conducted including randomised controlled trials (RCTs; exercise interventions lasting >2 weeks relative to control groups). A secondary meta-analysis pooled independent exercise interventions >2 weeks from longitudinal pre-post and RCT studies to explore whether subgroup differences in injury characteristics and/or exercise intervention parameters explained CRF changes. Further analyses included cohort, cross-sectional, and observational study designs. Outcome measures of interest were absolute ( $A\dot{V}O_{2peak}$ ) or relative  $\dot{V}O_{2peak}$  ( $R\dot{V}O_{2peak}$ ), and/or PPO. Bias/quality was assessed via The Cochrane Risk of Bias 2 and the National Institute of Health Quality Assessment Tools. Certainty of the evidence was assessed using the Grading of

**Funding:** This work was supported by a Nathalie Rose Barr PhD studentship awarded by the International Spinal Research Trust (#NRB123 to DDH), a Flexible and Enhanced Learning Program at the Faculty of Medicine within the University of British Columbia (to GSB), the Canadian Institutes of Health Research (Grant to CL), the Swiss National Science Foundation (Ambizione Grant PZ00P3\_186101 to CRJ), the Wings for Life Research Foundation (2020\_118 to CRJ), and Michael Smith Foundation for Health Research Trainee Awards in conjunction with the International Collaboration on Repair Discoveries and Rick Hansen Foundation, respectively (17110 to MW; 17767 to TEN). The funders had no role in study design, data collection and analysis, decision to publish, or preparation of the manuscript.

**Competing interests:** The authors have declared that no competing interests exist.

**Abbreviations:** 1RM, one repetition maximum; ACE, arm-crank ergometry; ACSM, American College of Sports Medicine; AIS, American Spinal Injury Association Impairment Scale;  $\dot{V}O_{2peak}$ , absolute peak oxygen uptake; CENTRAL, Cochrane Central Register of Controlled Trials; CERT, Consensus on Exercise Reporting Template; CI, confidence interval; CPET, cardiopulmonary exercise test; CRF, cardiorespiratory fitness; CVD, cardiovascular disease; EMBASE, Excerpta Medica Database; FES, functional electrical stimulation; GRADE, Grading of Recommendations, Assessment, Development and Evaluation; HIIT, high-intensity interval training; HR, heart rate; HRmax, maximum heart rate (age-predicted); HRpeak, peak heart rate; HRR, heart rate reserve; IQR, interquartile range; ISNCSCI, International Standards for Neurological Classification of Spinal Cord Injury; LTPA, leisure time physical activity; MET, metabolic equivalent; MTP, maximal tolerated power; MVPA, moderate-to-vigorous physical activity; NHLBI, National Heart, Lung and Blood Institute; NIH, National Institutes of Health; PPO, peak power output; PRISMA, Preferred Reporting Items for Systematic Reviews; RCT, randomised-controlled trial; RER, respiratory exchange ratio; RoB 2, the Cochrane Risk of Bias 2 tool; RPE, rating of perceived exertion;  $\dot{V}O_{2peak}$ , relative peak oxygen uptake; SCI, spinal cord injury; SCS, spinal cord stimulation; SD, standard deviation; TIDieR, Template for Intervention Description and Replication; TSI, time since injury;  $\dot{V}O_2$ , oxygen uptake;  $\dot{V}O_{2peak}$ , peak oxygen uptake;  $\dot{V}O_{2reserve}$ , reserve oxygen uptake; W, watts; WMD, weighted mean difference.

Recommendations Assessment, Development and Evaluation (GRADE) approach. Random effects models were used in all meta-analyses and meta-regressions.

Of 21,020 identified records, 120 studies comprising 29 RCTs, 67 pre-post studies, 11 cohort, 7 cross-sectional, and 6 observational studies were included. The primary meta-analysis revealed significant improvements in  $\dot{V}O_{2peak}$  [0.16 (0.07, 0.25) L/min],  $\dot{V}O_{2peak}$  [2.9 (1.8, 3.9) mL/kg/min], and PPO [9 (5, 14) W] with exercise, relative to controls ( $p < 0.001$ ). Ninety-six studies (117 independent exercise interventions comprising 1,331 adults with SCI) were included in the secondary, pooled meta-analysis which demonstrated significant increases in  $\dot{V}O_{2peak}$  [0.22 (0.17, 0.26) L/min],  $\dot{V}O_{2peak}$  [2.8 (2.2, 3.3) mL/kg/min], and PPO [11 (9, 13) W] ( $p < 0.001$ ) following exercise interventions. There were subgroup differences for  $\dot{V}O_{2peak}$  based on exercise modality ( $p = 0.002$ ) and intervention length ( $p = 0.01$ ), but there were no differences for  $\dot{V}O_{2peak}$ . There were subgroup differences ( $p \leq 0.018$ ) for PPO based on time since injury, neurological level of injury, exercise modality, and frequency. The meta-regression found that studies with a higher mean age of participants were associated with smaller changes in  $\dot{V}O_{2peak}$  and  $\dot{V}O_{2peak}$  ( $p < 0.10$ ). GRADE indicated a moderate level of certainty in the estimated effect for  $\dot{V}O_{2peak}$ , but low levels for  $\dot{V}O_{2peak}$  and PPO. This review may be limited by the small number of RCTs, which prevented a subgroup analysis within this specific study design.

## Conclusions

Our primary meta-analysis confirms that performing exercise >2 weeks results in significant improvements to  $\dot{V}O_{2peak}$ ,  $\dot{V}O_{2peak}$ , and PPO in individuals with SCI. The pooled meta-analysis subgroup comparisons identified that exercise interventions lasting up to 12 weeks yield the greatest change in  $\dot{V}O_{2peak}$ . Upper-body aerobic exercise and resistance training also appear the most effective at improving  $\dot{V}O_{2peak}$  and PPO. Furthermore, acutely injured, individuals with paraplegia, exercising for  $\geq 3$  sessions/week will likely experience the greatest change in PPO. Ageing seemingly diminishes the adaptive CRF responses to exercise training in individuals with SCI.

## Registration

PROSPERO: [CRD42018104342](https://doi.org/10.1186/1745-6215-4-342)

## Author summary

### Why was this research done?

- Individuals with spinal cord injury (SCI) typically exhibit low levels of cardiorespiratory fitness (CRF). As such, these individuals are at a higher risk for the development of chronic diseases in comparison to the non-injured population.
- The current SCI-specific exercise guidelines encourage moderate-to-vigorous intensity aerobic exercise 40 min per week for fitness benefits or 90 min per week for

cardiometabolic health benefits. Yet, others have suggested individuals with SCI should be achieving 150 min per week in line with non-injured population guidelines.

- This systematic review with meta-analysis and meta-regression aimed to identify whether specific injury characteristics (e.g., time, neurological level, or severity of injury) or exercise intervention parameters (e.g., modality, intensity, volume) result in the greatest changes in CRF in individuals with SCI.

### What did the researchers do and find?

- We searched for studies that investigated the effects of exercise interventions lasting longer than 2 weeks on changes in absolute and relative peak oxygen consumption and/or peak power output (PPO) in individuals with SCI. In total, we included 120 studies of various study designs: 29 randomised controlled trials (RCTs), 67 pre-post studies, 11 cohort comparisons, 7 cross-sectional studies, and 6 observational studies.
- The greatest changes in PPO may be achieved by individuals with acute SCI or paraplegia. Upper-body aerobic and resistance exercise were identified as the most optimal exercise modalities. Furthermore, there is a trend suggesting that prescribing moderate-to-vigorous intensity aerobic exercise using either a percentage of the individual's peak heart rate (HR) or oxygen consumption, for 3 or more sessions per week, will result in the greatest improvements in PPO.
- Our findings support the minimum 40 min of weekly moderate-to-vigorous intensity exercise recommended by the SCI-specific exercise guidelines to significantly improve fitness. However, while not statistically significant, a 2-fold greater improvement in PPO was shown for interventions with exercise performed  $\geq 90$  min/week in comparison to  $\geq 40$  min/week. Cross-sectional comparisons also revealed that individuals with SCI performing higher levels of physical activity were associated with a higher CRF.

### What do these findings mean?

- Exercise interventions  $>2$  weeks can significantly improve CRF in individuals with an SCI by a clinically meaningful change greater than one SCI adjusted metabolic equivalent (i.e.,  $\geq 2.7$  mL/kg/min). A one metabolic equivalent improvement has been associated with a reduction in cardiovascular-related mortality risk in non-injured individuals.
- Our findings indicate that certain participant/injury characteristics and exercise intervention parameters are moderators of the changes observed in CRF across studies. These factors should be considered in the design of future exercise interventions. Future research should consider: following SCI-specific reporting guidelines (ensuring transparency of reporting), investigating the dose-response relationship between exercise and CRF or the influence of exercise intensity in this population, and consider how different injury characteristics impact the benefits of exercise on CRF.
- The main limitation of this review was the lack of RCTs comparing changes in CRF following an exercise intervention relative to a control group. This prevented subgroup

comparisons in this study design specifically and therefore we pooled pre-post and RCT exercise interventions to explore these effects.

## 1. Introduction

Spinal cord injury (SCI) is a complex neurological condition, caused by trauma, disease, or degeneration, which results in sensory-motor deficits (i.e., paralysis or paresis) below the level of lesion and autonomic dysfunctions. Progressive physical deconditioning following injury results in increased health care utilisation, reliance on personal assistance services, and a greater predisposition towards developing chronic diseases [1,2]. Individuals with SCI are at an increased risk of stroke, cardiovascular disease (CVD), and type 2 diabetes mellitus compared to non-injured counterparts [3–5]. The elevated incidence of these conditions in people with SCI emphasises the need for targeted interventions to address modifiable risk factors for these chronic diseases, such as cardiorespiratory fitness (CRF). In clinical populations CRF is typically defined as an individual's peak oxygen uptake ( $\dot{V}O_{2\text{peak}}$ ) or peak power output (PPO).  $\dot{V}O_{2\text{peak}}$  and PPO are determined during graded cardiopulmonary exercise testing (CPET) to the point of volitional exhaustion and represents the integrated functioning of different bodily systems (pulmonary, cardiovascular, and skeletal) to uptake, transport, and utilise oxygen for metabolic processes [6]. A number of prospective studies have indicated that CRF is at least as important, if not more so, than other traditional CVD risk factors (e.g., obesity, hypertension, and smoking) and is strongly associated with mortality [7–12].

Low levels of CRF have been widely reported in the SCI population [13], with the between-person variability partially explained by the neurological level and severity of injury (i.e., lower CRF reported in individuals with tetraplegia) [14]. A large proportion of the variance in CRF is also explained by physical activity [15], which is reduced in the SCI population [16,17]. Performing regular physical activity and/or structured exercise has long been promoted for improving CRF in individuals with SCI [18,19]. In 2011, the first evidence-based exercise guidelines, specifically for individuals with SCI were developed [20], which stated that “for important fitness benefits, adults with SCI should engage in at least 20 minutes of moderate-to-vigorous-intensity aerobic activity and strength-training exercises 2 times per week”. This guideline has since been updated, yet remains the same with regards to CRF benefits [21]. Although this implies adults with SCI can accrue fitness benefits from volumes of activity well below that promoted in the general population, others have advocated that adults with a physical disability [22,23] and individuals with SCI [24] should aim to perform at least 150 min of aerobic exercise per week. For additional health benefits, it has been suggested that adults should perform closer to 300 min per week of moderate-intensity physical activity [25,26]. While the current SCI-specific guidelines likely represent the “minimum” threshold required to achieve CRF benefits, it has been suggested that this creates an impression that individuals with SCI do not need to be as physically active as the general population [27]. The dose-response relationship between exercise volume and CRF improvements in individuals with SCI remains to be elucidated.

It is noteworthy that the aforementioned SCI-specific exercise guidelines utilise the terminology of “moderate-to-vigorous” to describe the desired exercise intensity. This is in contrast to accepted guidelines in the general population whereby moderate and vigorous-intensity exercise are distinguished from one another with specific thresholds (e.g.,  $\geq 150$  min of

moderate-intensity or  $\geq 75$  min of vigorous-intensity activity per week) [23]. Exercise intervention intensity has been shown to influence the magnitude of change in CRF in patients undergoing cardiac rehabilitation [28,29]. The feasibility/effectiveness of higher intensity exercise is also currently a topical area of research in the SCI population [30–32]. There is the potential for vigorous-intensity exercise to be more time efficient or lead to superior health benefits, although the impact of different high-intensity interval training protocols on CRF in individuals with SCI compared to moderate-intensity exercise is yet to be determined. A recent systematic review identified that exercise interventions of a specific modality yield distinct changes in certain cardiometabolic health outcomes, but not other outcomes, in individuals with SCI [33]. This provides rationale for wanting to investigate the efficacy of different exercise modalities on CRF in this population. Consequently, a number of research questions requiring further attention include:

1. Do injury-specific characteristics (e.g., tetraplegia versus paraplegia, acute versus chronic injuries, motor-complete versus incomplete) mediate CRF responses to exercise?
2. What is the best intensity, frequency, and volume of weekly exercise?
3. Is there an optimal conditioning modality [e.g., upper-body aerobic exercise, resistance training, functional electrical stimulation (FES), hybrid or multimodal exercise interventions]?

To address these questions, we performed a systematic review with meta-analysis and meta-regression to investigate the impact of different exercise interventions on changes in CRF in individuals with SCI. Moreover, we gathered evidence to determine whether key moderators (e.g., participant/injury characteristics, intervention/study characteristics, and risk of bias) influence these intervention effects.

## 2. Methods

This review is reported as per the Preferred Reporting Items for Systematic Reviews and Meta-Analyses (PRISMA) guidelines [34] ([S1 Checklist](#)) and was prospectively registered (PROSPERO ID CRD42018104342). The primary meta-analysis of this review included randomised controlled trials (RCTs; exercise intervention versus a comparison control group) given their robust, high-quality, and precise study design that can reliably estimate causation. A secondary, pooled meta-analysis was also conducted that combined the intervention arms of RCTs with non-randomised study designs (RCTs and pre-post exercise interventions without a comparison control group). Further secondary meta-analyses were conducted that included cohort comparisons (e.g., physically inactive versus habitual exercisers) and observational studies (e.g., standard of care rehabilitation), along with RCTs that specifically compared the impact of different exercise intensities (e.g., low or moderate-intensity versus vigorous or supramaximal) on CRF outcomes. Lastly, we qualitatively reviewed cross-sectional studies that reported associations between physical activity and CRF outcomes.

### 2.1. Eligibility criteria

Studies were required to meet the following inclusion criteria: (1) Adult ( $\geq 18$  years) participants; (2) any acquired (traumatic, infection, cancer) SCI (note, studies were included if  $>80\%$  of the sample met these 2 aforementioned inclusion criteria); (3) an exercise or physical activity intervention lasting  $>2$  weeks (RCTs, pre-post, and observational trials); (4) report a measurable exposure variable (i.e., cohort studies: athletes versus non-athletes or sedentary versus active participants, and cross-sectional studies: self-reported or objectively measured habitual

physical activity level); and (5) report CRF-specific outcomes [i.e., absolute ( $\dot{V}O_{2\text{peak}}$ ) or expressed as relative to body mass  $\dot{V}O_{2\text{peak}}$  ( $R\dot{V}O_{2\text{peak}}$ ), evaluated via analysis of expired air during a peak (or symptom-limited) CPET or submaximal prediction exercise test, or PPO].

Studies were excluded if they met the following criteria: (1) non-human; (2) non-original work (i.e., reviews, guideline documents, editorials, viewpoints, letter-to-editor, protocol paper); (3) case reports and case series with a number ( $n$ ) of participants  $<5$  (to increase the robustness of our findings given the inclusion of smaller sample sizes in previous reviews [18,35,36]); (4) non-peer reviewed (i.e., conference proceeding/abstracts/posters); (5) children or adolescents ( $<18$  years); (6) non-SCI (non-injured participants or other neurological conditions); (7) does not report a CRF-specific outcome; (8) single exercise sessions or an intervention  $<2$  weeks; (9) no suitable comparison (i.e., control group or baseline data pre-intervention) or exposure variable measured; and (10) no full text. Studies with concurrent interventions (i.e., diet, lifestyle, or respiratory training) were included only if the effects of exercise could be isolated.

## 2.2. Search strategy

A search of the following electronic databases: MEDLINE (via Pubmed), Excerpta Medica Database (EMBASE; via Ovid), Web of Science, and the Cochrane Central Register of Controlled Trials (CENTRAL) was conducted from their respective inception through to March 25, 2023. Search terms were developed by the corresponding author (TN) and agreed upon by co-authors (AK and MW). The search strategy combined key words describing the following: (1) condition (e.g., SCI); (2) “intervention or exposure variable” (e.g., rehabilitation, exercise, and physical activity); and (3) “outcome” (e.g.,  $\dot{V}O_{2\text{peak}}$  or PPO). Details of the complete search strategy can be found in online Supporting information (Tables A–C in [S1 File](#)). Search results were collated using Endnote software (Thomson Reuters, New York, United States of America) and duplicates removed.

## 2.3. Study selection and data extraction

The citations retrieved from the search strategy were screened by title, abstract, and full text by 2 independent reviewers (DH and GB). At each stage of the evaluation, studies were excluded if the inclusion criteria were not satisfied. A conservative approach was taken, whereby if insufficient information was available to warrant study exclusion during the title and abstract stages of screening, studies were retained in the sample for full-text screening. TN resolved any disagreement with regards to study inclusion. There was no restriction on the language of studies. Where necessary, reviewers screened using Google translate [37] or sought assistance from bilingual co-authors.

Two authors (DH and GB) independently extracted data in duplicate using Microsoft Excel. Any disagreements were resolved via mutual consensus. Where more than 1 publication was apparent for the same participants, data were extracted from the study with the largest sample size to avoid duplication. Author, year, study design, sample size, participant demographics/injury characteristics, exercise parameters (including the type, frequency, duration, intensity, and weekly volume), or physical activity exposure details (training history, objective wearable device, or validated self-report questionnaire) and adverse events were extracted. For RCTs, pre-post interventions and observational studies, mean  $\pm$  standard deviation (SD) for  $\dot{V}O_{2\text{peak}}$  and PPO outcomes at baseline and post-intervention/control or observation period were extracted to assess change in CRF. For cross-sectional studies, mean  $\pm$  SD outcomes were extracted for the unique cohorts, along with the significance and magnitude of associations

between CRF and habitual physical activity. Where possible,  $\dot{V}O_{2peak}$  values were extracted in relative (mL/kg/min) and absolute (L/min) terms or calculated using pre- and post-intervention body mass values when provided. As it is widely accepted that  $\dot{V}O_{2peak}$  should be expressed in relative terms, to account for changes in body mass, results are presented for both  $A\dot{V}O_{2peak}$  and  $R\dot{V}O_{2peak}$ , but the discussion focuses primarily on  $R\dot{V}O_{2peak}$ . PPO values were extracted in watts (W) only. If there was insufficient information, the authors were contacted via email ( $N = 13$ ) and given a two-week window to provide additional data or clarity (responses received,  $N = 8$  [38–45]). Detailed notes were recorded outlining the reasons for study inclusion/exclusion and the number of studies included and excluded at each stage.

## 2.4. Risk of bias

Study quality was appraised by at least 2 independent reviewers in duplicate (DH, GB, and SYC), with any conflicts resolved by a third reviewer (TN). The Cochrane Risk of Bias 2 (RoB 2) was used to assess the risk of bias of the RCTs [46]. Reviewers determined the level of bias for each domain using the RoB 2 algorithms and is presented visually using Robvis [47]. Non-randomised designs were assessed using assessment tools generated by the National Institutes of Health (NIH) and National Heart, Lung and Blood Institute (NHLBI, Bethesda, Maryland, USA). Pre-post studies were rated using the Quality Assessment Tool for Before-After (Pre-Post) Studies with No Control Group (12 items) and observational and cross-sectional studies were rated using the Quality Assessment Tool for Observational Cohort and Cross-Sectional Studies (14 items). Studies were subsequently classified as good, fair, or poor quality using the guidance provided within each tool and is presented visually in online Supporting information (S4–S5 and S10–S13Files).

## 2.5. Data synthesis and analysis

A variety of methods [i.e., indices of heart rate (HR),  $\dot{V}O_2$  or ratings of perceived exertion (RPE)] have been utilised in the literature to establish, prescribe, and regulate exercise intensity in the SCI population, which creates complexity when classifying the intensity of exercise. Each intervention was classified as having prescribed either light, moderate, vigorous, or supramaximal-intensity aerobic exercise, based on thresholds proposed by the American College of Sports Medicine (ACSM) [48] (Table A in S2 File). If a study reported a progression in intensity that spanned the moderate and vigorous-intensity categories (e.g., 60% to 65%  $\dot{V}O_{2peak}$ ), it was classified as “moderate-to-vigorous.” If insufficient data were provided, studies were classified as “mixed-intensity/cannot determine.” Furthermore, where a study reported frequency of sessions or length of interventions as a range (e.g., 6 to 8 weeks), the midpoint was extracted and if a study reported duration as a range (e.g., 40 to 45 min), the greater value was extracted. Descriptions of adverse events in the included studies were also collated. These were categorised into the following subgroups: (1) bone, joint, or muscular pain; (2) autonomic or cardiovascular function; (3) skin irritation or pressure sores; and (4) other.

Means  $\pm$  SD were estimated from median and interquartile range (IQR) [49] or median and range [50], where required. Where CRF data was only presented in figures, data were extrapolated using Photoshop (Adobe). To combine within-study subgroups and to estimate SD of the delta ( $\Delta$ ) change in CRF using correlation factors, we followed guidance from the Cochrane handbook [49]. Correlation factors were calculated for  $A\dot{V}O_{2peak}$ ,  $R\dot{V}O_{2peak}$ , and PPO using



studies that reported pre-post SD and SD of the  $\Delta$  change using the following equation:

$$Corr = \frac{(SD_{pre})^2 + (SD_{Post})^2 - (SD_{Change})^2}{2 \times SD_{pre} \times SD_{Post}}$$

The specific correlation factors that were calculated for each study were averaged across each study design (Table A in [S3 File](#)) and applied in the following equation to calculate SD of the change for studies where these values were not reported:

$$SD_{Change} = \sqrt{(SD_{pre})^2 + (SD_{Post})^2 - 2 \times corr \times SD_{pre} \times SD_{Post}}$$

where *corr* represents the correlation coefficient.

Since  $\dot{A}\dot{V}O_{2peak}$ ,  $\dot{R}\dot{V}O_{2peak}$ , and PPO are continuous variables, expressed using the same units across studies, we utilised weighted mean differences (WMDs) and 95% confidence intervals (CIs) as summary statistics. A primary meta-analysis was carried out that included RCTs comparing  $\Delta$  in CRF outcomes following an exercise intervention relative to control groups. There were not enough studies to perform subgroup analyses within this study design specifically, in accordance with Cochrane recommendations (i.e., a minimum of 10 studies within each subgroup analysis) [51]. Therefore, a pooled meta-analysis describing  $\Delta$  in CRF outcomes in response to prospective, well-characterised exercise interventions lasting >2 weeks (e.g., combining exercise intervention-arms from RCTs and pre-post studies) was also conducted to facilitate subgroup comparisons. Nine separate subgroup analyses were performed for this pooled meta-analysis to describe  $\Delta$  in each CRF outcome with studies categorised into subgroups based on the following: (1) time since injury [(TSI), e.g., acute (<1-year), chronic ( $\geq$ 1-year)]; (2) neurological level of injury (e.g., tetraplegia, paraplegia); (3) injury severity [e.g., grading in accordance with the American Spinal Injury Association Impairment Scale (AIS): motor-complete (AIS A-B), motor-incomplete (AIS C-D)]; (4) exercise modality [e.g., aerobic volitional upper-body, resistance training, FES, gait training, hybrid/multimodal, behaviour change]; (5) relative exercise intensity (e.g., light, moderate, moderate-to-vigorous, vigorous, supramaximal); (6) method used to prescribe exercise intensity (e.g.,  $\dot{V}O_2$ , HR, RPE, workload); (7) frequency of exercise sessions per week (<3,  $\geq$ 3 to <5,  $\geq$ 5); (8) aerobic exercise volume [e.g., SCI-specific exercise guidelines for fitness (40 to 89 min/wk) [21], SCI-specific exercise guidelines for cardiometabolic health (90 to 149 min/wk) [21], achieving general population exercise guidelines ( $\geq$ 150 min/wk) [23]]; and (9) length of intervention ( $\leq$ 6 weeks, >6 to  $\leq$ 12 weeks, >12 weeks). Studies were also classified as “mixed” (i.e., if cohorts included acute and chronic TSI, tetraplegia and paraplegia, motor-complete and motor-incomplete, prescribed exercise intensity via HR and RPE) or “not reported/cannot determine.” Studies classified as “mixed” or “not reported/cannot determine” were not included in the subgroup analyses but are included in the overall WMDs reported herein and the Supporting information (Tables E and F in [S5 File](#)). Three additional meta-analyses were conducted for different trial designs: (1) comparing inactive versus active participants (e.g., cross-sectional cohort studies); (2) describing  $\Delta$  in CRF outcomes with standard of care inpatient rehabilitation or free-living follow up (e.g., observational studies); and (3) head-to-head comparison of different exercise intensities (RCTs with exercise interventions comparing low or moderate versus vigorous or supramaximal-intensity exercise). Meta-analyses were conducted in R (Version 3.5.1, R Foundation for Statistical Computing, Vienna, Austria) using the package metafor [52]. Statistical heterogeneity was assessed using the  $I^2$  and accompanying *p*-value from the chi-squared test. A random effects model was chosen to account for the variability in the true effect

size across studies, given the expected between-study variability of different exercise intervention components and participant characteristics (by nature of SCI being a heterogeneous condition depending on the neurological level and severity of injury). Evidence for differences in effects between the subgroups in the pooled meta-analysis was explored by comparing effects in the subgroups and the corresponding  $p$ -values for interaction (metagen function from the R package meta [53]). Thresholds for statistically significant subgroup differences were adjusted for the number of subgroup comparisons and individual subgroup  $p$ -values were adjusted for multiple comparisons via the Bonferroni correction method. To assess the effect of potential outlier studies, leave-one-out analyses were performed with studies removed and pooled WMD recalculated. Sensitivity analyses were also conducted by comparing the WMDs of low and high risk of bias studies, as well as studies with and without imputed data (i.e., extracted from figures or where mean  $\pm$  SD were calculated from median, IQR, or range), to confirm the robustness of our findings. A further subgroup analysis was performed to compare  $\Delta$  in CRF outcomes following exercise interventions that matched the CPET modality to the intervention modality (i.e., using an incremental arm-crank ergometry (ACE) CPET to test the effects of an arm-crank exercise intervention). Potential small study effects in the dataset were assessed using funnel plots. Egger's tests were also conducted in R when there was a minimum of 10 studies included in a meta-analysis [51]. Study design statistical power for both the summary effect size and a range of hypothetical effect sizes was calculated and visualised in fire-power plots using the metameta R package, recently described by Quintana [54]. Plots were produced for the pre-post exercise interventions alone and for the RCT exercise interventions alone relative to controls (i.e., the primary meta-analysis studies) to facilitate comparisons between study designs. Data is visualised in R (see Github for scripts: <https://github.com/jutzca/Exercise-and-fitness-in-SCI>). A 2.7 mL/kg/min, and thus 1 metabolic equivalent in SCI (1 SCI-MET) [55], change in  $\dot{V}O_{2\text{peak}}$  was considered clinically meaningful.

To explore potential sources of heterogeneity, a random-effects meta-regression was performed using preselected moderator variables in Stata (Version 13, StataCorp LLC, College Station, Texas, USA), adjusted for multiple testing. As per Cochrane recommendations [53], for each included covariate in the model a minimum of 10 studies were required. To achieve this, and to also overcome the issue of collinearity between moderators, some moderators were not included in the analysis. Moderators were selected *a priori*, based on their potential to influence CRF responses. Exercise intensity prescription was later added as a moderator in the meta-regression in light of a recent study challenging strategies for prescribing exercise intensity in individuals with SCI [56]. Moderators fell into 2 categories: *model 1*— participant/injury characteristics [continuous variables: age, TSI, and baseline CRF; categorical variables: sex ( $n$  = male), neurological level of injury ( $n$  = PARA), severity ( $n$  = motor-complete)]; or *model 2*— intervention/study characteristics [continuous variables: exercise session duration, frequency, weekly exercise volume, intervention length; categorical variables: exercise modality, exercise intensity, method of exercise intensity prescription, and risk of bias classification]. Any potential covariates of the effect of  $\dot{A}\dot{V}O_{2\text{peak}}$ ,  $\dot{R}\dot{V}O_{2\text{peak}}$ , and PPO with  $p \leq 0.10$  identified via univariate meta-regression were subsequently included in multivariate meta-regression modelling. The level of significance for multivariate meta-regression was set at  $p \leq 0.10$ . Because meta-regression can result in inflated false-positive rates when heterogeneity is present, or when there are few studies, a permutation test described by Higgins and Thompson [57] was used to verify the significance of the predictors in the final model, whereby 10,000 permutations were generated.

## 2.6. Certainty on the body of the evidence assessment using the GRADE approach

The Grading of Recommendations Assessment, Development and Evaluation (GRADE) approach [58] was used to evaluate the certainty of the evidence for  $\dot{V}O_{2\text{peak}}$ ,  $\dot{R}\dot{V}O_{2\text{peak}}$ , and PPO for the pooled pre-post and RCT exercise interventions meta-analysis. It was decided that the greater number of studies included in the pooled meta-analysis, in comparison to the primary meta-analysis consisting of RCTs only, would provide a more accurate assessment of the current body of evidence. Two authors (DH and SYC) independently assessed the certainty of evidence for each outcome, with any conflicts resolved by the corresponding author (TN). The certainty of the evidence was graded from “High” to “Moderate,” “Low” or “Very Low.” GRADE certainty in the evidence was downgraded if one or more of the following criteria were present: (1) risk of bias; (2) inconsistency in the results for a given outcome; (3) indirectness; (4) imprecision; and (5) small study effects.

## 3. Results

The initial database search identified 14,248 articles after removal of duplicates. A further 12,322 studies were removed following the screening of titles and abstracts. The remaining 1,926 articles were selected for full-text review based on inclusion and exclusion criteria (S1 File). Of these, a total of 120 eligible studies, across each specific study design (RCT = 29, pre-post = 67, observational = 6, cross-sectional cohort = 11, cross-sectional association = 7), were included in this review (Fig 1). Twenty-two RCTs were included in the primary meta-analysis (S4 File). Ninety-six studies, comprising the RCTs and pre-post studies (total = 117 independent interventions), were included in the pooled meta-analysis (S5 File). Summaries of the pooled cohorts and descriptions of the individual studies included within each additional meta-analysis are provided as Supporting information (S10–S13 Files).

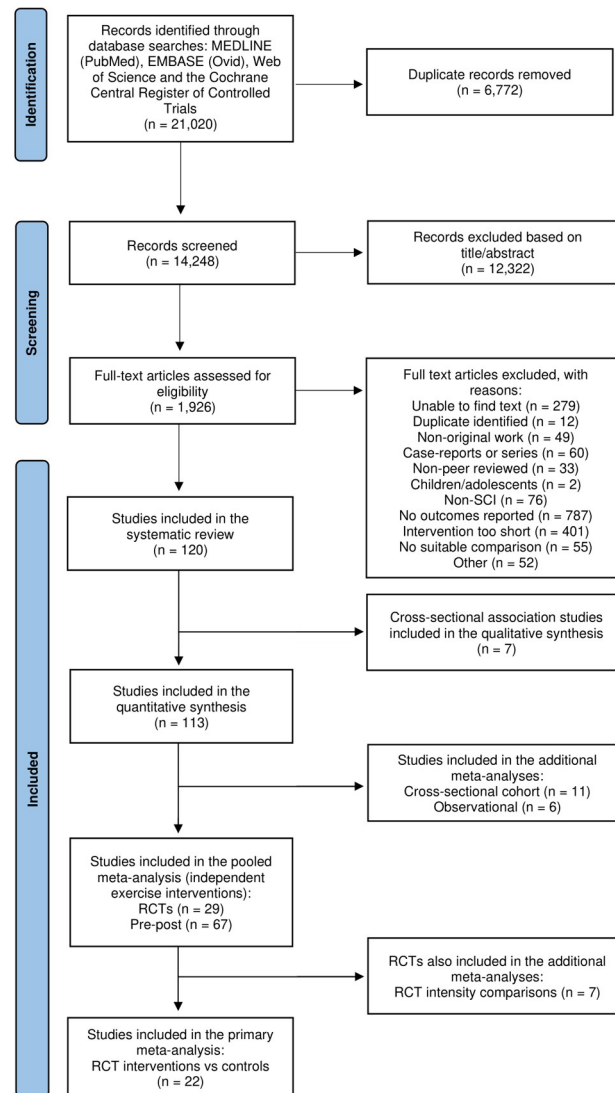
### 3.1. Primary meta-analysis: RCT exercise intervention versus control groups

Twenty-two RCTs assessed changes in CRF outcomes between exercise intervention ( $n = 283$  participants) and control ( $n = 252$  participants) groups. Seven RCTs compared changes in CRF outcomes between low-to-moderate and vigorous-to-supramaximal intensity interventions. These specific RCTs are reported in an additional meta-analysis and are therefore not included within the primary meta-analysis. Participant demographics, injury characteristics, exercise intervention parameters, and changes in CRF outcomes for each RCT can be found in Fig 2. A summary of the pooled cohort characteristics, summary statistics for the meta-analysis, and forest plots for each CRF outcome are presented in Supporting information (S4 File). The meta-analysis of RCTs revealed a significantly higher  $\dot{V}O_{2\text{peak}}$  [0.16 (0.07, 0.25) L/min,  $p < 0.001$ ],  $\dot{R}\dot{V}O_{2\text{peak}}$  [2.9 (1.8, 3.9) mL/kg/min,  $p < 0.001$ ], and PPO [9 (5, 14) W,  $p < 0.001$ ] following exercise interventions relative to controls. There was significant heterogeneity present across all CRF outcomes ( $p < 0.001$ ), with  $I^2$  values of 87%, 93%, and 88% for  $\dot{V}O_{2\text{peak}}$ ,  $\dot{R}\dot{V}O_{2\text{peak}}$ , and PPO, respectively.

### 3.2. Pooled meta-analysis: Pre-post and RCT exercise interventions

CRF responses were pooled across 96 studies, comprising 117 exercise interventions in total, taken from 81 pre-post exercise interventions and 36 independent exercise intervention arms from RCTs. Some studies included multiple exercise intervention arms/phases; hence, the greater total number of exercise interventions than studies. A summary of the demographic/

PRISMA 2020 flow diagram for new systematic reviews which included searches of databases and registers only

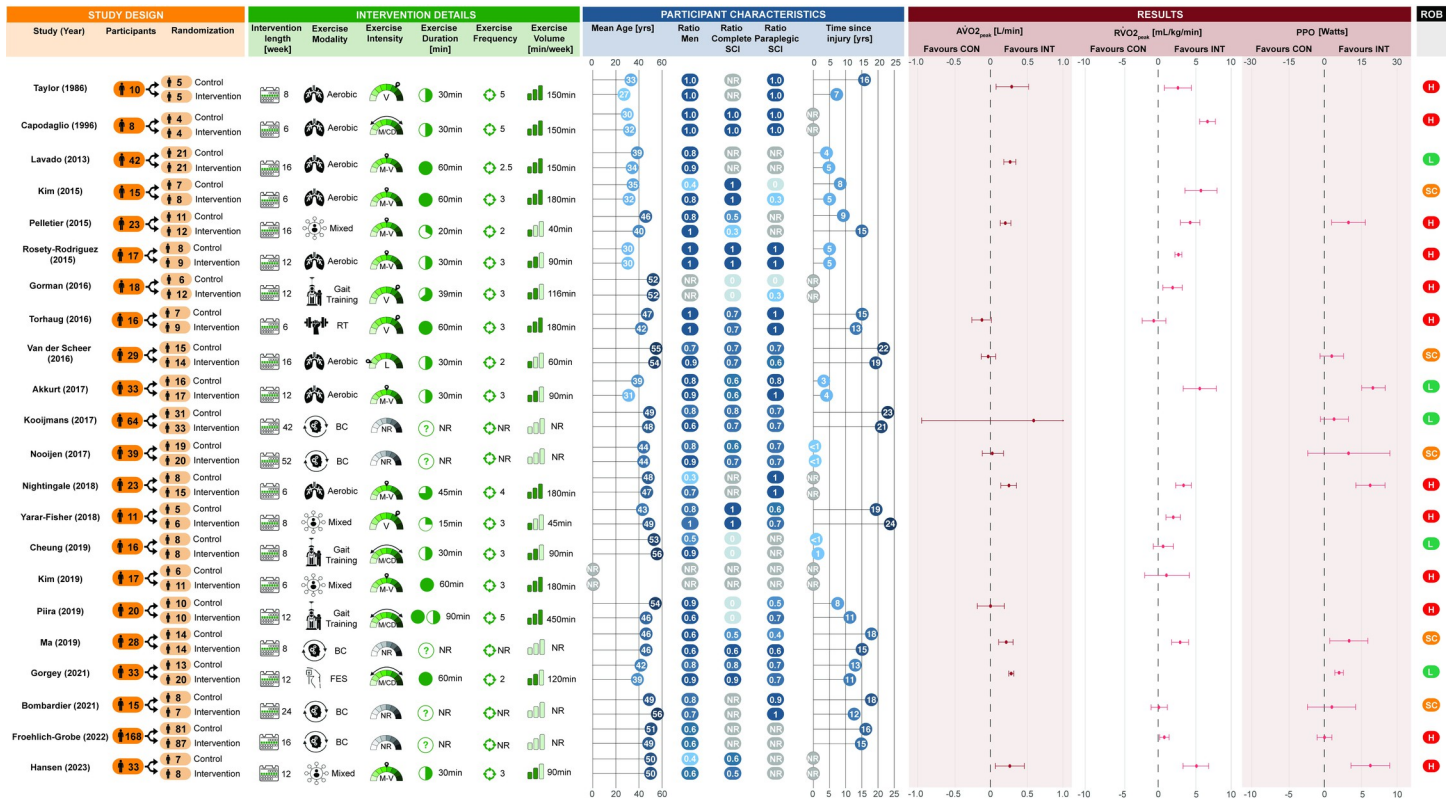


**Fig 1. PRISMA flow diagram.** PRISMA, Preferred Reporting Items for Systematic Reviews and Meta-Analyses.

<https://doi.org/10.1371/journal.pmed.1004082.g001>

injury characteristics and intervention parameters for the pooled cohort (i.e., all 117 interventions) included in the analyses for  $\dot{V}O_{2peak}$ ,  $R\dot{V}O_{2peak}$ , and PPO are presented in Supporting information (Tables A and B in [S5 File](#)). Participant demographics and exercise intervention parameters across the total 117 exercise interventions are summarised below. Summaries of the interventions for each CRF outcome, along with details of the specific studies, are presented in online Supporting information ([S5 File](#)).

**3.2.1. Participants.** Across the 117 exercise interventions, there were a total of 1,331 participants. Most interventions included both males and females (63% of studies), where females made up between 6% and 80% of the mixed cohorts. There were no female-only cohorts. Mean age ranged between 23 and 58 years and the majority of participants had chronic injuries (64% >1-year), with mean TSI ranging between 56 days to 24 years. Sixty-three interventions included a mixed cohort of paraplegia and tetraplegia, of which individuals with paraplegia



**Fig 2. Summary of the study design, exercise intervention parameters, participant demographics/injury characteristics, and changes in cardiorespiratory fitness outcomes for each RCT included in the primary meta-analysis.** Studies were assessed for risk of bias (ROB) and rated as either low (L), some concerns (SC) or high (H) risk. AVO<sub>2peak</sub>, absolute peak oxygen uptake; BC, behaviour change; FES, functional electrical stimulation; L, light-intensity; M, moderate-intensity; M/CD, mixed/cannot determine; M-V, moderate-to-vigorous-intensity; NR, not reported; PPO, peak power output; RT, resistance training; RVO<sub>2peak</sub>, relative peak oxygen uptake; SCI, spinal cord injury; V, vigorous-intensity.

<https://doi.org/10.1371/journal.pmed.1004082.g002>

made up between 10% and 88% of the mixed cohorts. Four interventions recruited individuals with tetraplegia-only, 39 paraplegia-only, and 11 did not specify. Participants across all AIS groups were included, of which 41 interventions were motor-complete-only, 19 were motor-incomplete-only, and 20 did not report. Thirty-seven interventions recruited both motor-complete and incomplete individuals, of which 33% were motor-incomplete. Weighted mean AVO<sub>2peak</sub> and RVO<sub>2peak</sub> at baseline was 1.28 (0.51 to 3.50) L/min and 17.8 (7.3 to 36.9) mL/kg/min, respectively, and PPO was 49 (0 to 168) W.

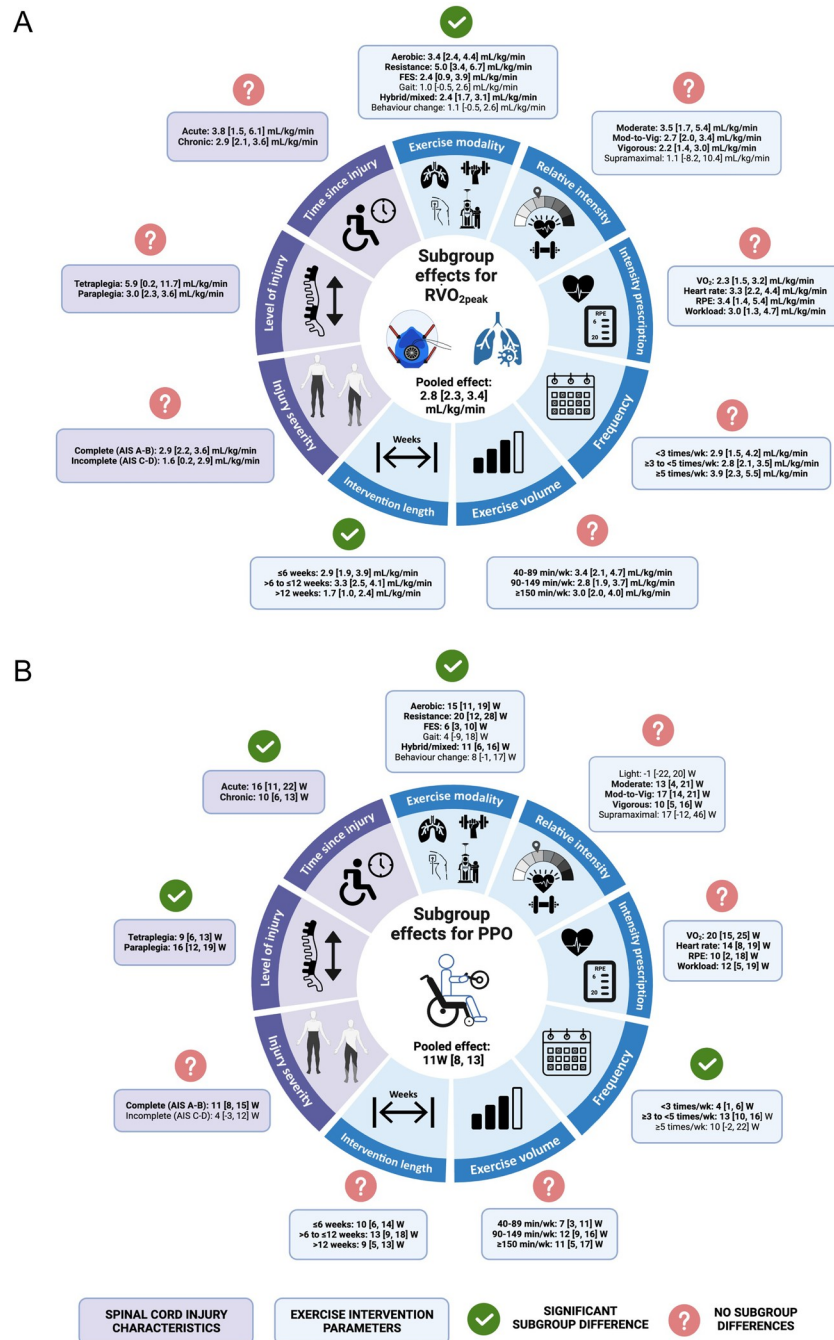
**3.2.2. Exercise intervention characteristics.** Length of interventions ranged from 4 to 52 weeks, and while most studies reported a specific, predetermined intervention length, some reported a range [59–61], a total or targeted number of sessions [60,62–66], or provided an average [65,67,68]. Exercise sessions were completed between 2 and 7 times per week. Eleven studies reported a range (e.g., “two to three sessions”) or maximum frequency (e.g., “up to three sessions/week”) [60,63,66,69–76], and frequency was either not reported or could not be determined in 7 studies [39,77–82]. The remainder reported an exact frequency (e.g., 3 sessions per week). The duration of exercise sessions ranged from 5 to 90 min, with 5 studies reporting a range (e.g., 20 to 30 min) [60,76,83–85] and 6 studies reporting a progression to a target duration [63,86–90]. Duration was not reported or could not be determined in 15 studies. Based on current exercise guidelines, 23 interventions prescribed exercise within the SCI-specific exercise guidelines for fitness (40 to 89 min/week), 45 interventions targeted the SCI-

specific exercise guidelines for cardiometabolic health (90 to 149 min/week), and 30 were greater than general population exercise guidelines ( $\geq 150$  min/week).

Forty-two interventions utilised aerobic upper-body exercise, 7 upper-body resistance training, 22 FES, 15 gait training, 5 behaviour change, and 26 mixed/multimodal interventions. Following the ACSM thresholds, 1 intervention prescribed light-intensity (1%), 17 prescribed moderate-intensity (14%), 35 prescribed moderate-to-vigorous-intensity (30%), 26 prescribed vigorous-intensity (22%), and 2 prescribed supramaximal-intensity exercise (2%). Intensity could not be determined from 36 interventions (31%). With regards to exercise intensity prescription methods, 35 interventions used HR, regulated either via  $HR_{peak}$  (%  $HR_{peak}$ , i.e., determined via a CPET;  $N = 10$ ),  $HR_{max}$  (% $HR_{max}$ , i.e., age-predicted;  $N = 10$ ), or HR reserve (%HRR;  $N = 15$ ). Fourteen interventions established intensity using  $\dot{V}O_{2peak}$  (% $\dot{V}O_{2peak}$ ;  $N = 13$ ) or  $\dot{V}O_2$  reserve (% $\dot{V}O_{2reserve}$ ;  $N = 1$ ) calculated from the pre-intervention CPET. Fourteen interventions utilised RPE, using either the Borg CR10 scale ( $N = 7$ ) or the Borg 6–20 scale ( $N = 7$ ). Workload was used to prescribe intensity in 11 interventions, via a percentage of PPO (%PPO;  $N = 6$ ), 1 repetition maximum (%1RM;  $N = 4$ ), or maximal tolerated power (%MTP;  $N = 1$ ). Forty-three interventions either used a mixture of prescription methods or intensity could not be classified.

**3.2.3. Adverse events.** Adverse events were described in 18 interventions, comprising at least 49/1,331 (3.7%) participants (S6 File). These events were related to: (1) bone, joint, or muscular pain ( $n = 10$  participants); (2) autonomic or cardiovascular function ( $n = 8$  participants); (3) skin irritation or pressure sores ( $n = 18$  participants); and (4) other events including anxiety, nausea, dizziness, and issues with testing equipment ( $n = 3$  participants). The following adverse events were reported in 4 other pre-post studies but could not be categorised as above. Beillot and colleagues [77] stated that participants experienced “spontaneous fractures of lower limbs, occurrence of a syringomyelia and pressure sores at the foot and ankle” ( $n = 10$ ), but did not define the number of participants who sustained each event. Likewise, Janssen and Pringle [70] reported “lightheadedness in some subjects” and Gibbons and colleagues [91] stated that “a number of participants showed some level of autonomic dysreflexia during the FES response test”, but both studies did not quantify further. Vestergaard and colleagues [92] reported adverse events relating to “slight non-persisting pain in neck ( $n = 1$ ), arms and shoulders ( $n = 4$ ) during and between training sessions, dizziness that disappeared after 5 min ( $n = 1$ ), feeling tired in the head/dizziness that disappeared after training with no other signs of autonomic hyperreflexia ( $n = 2$ ), increased spasms ( $n = 2$ ), and vomiting just after training ( $n = 2$ ).” However, as only 7 participants completed the intervention, it cannot be determined whether these events were reported for 1 or multiple participants.

**3.2.4. Change in CRF outcomes.** Seventy-four exercise interventions assessed the change in  $A\dot{V}O_{2peak}$ , revealing a significant increase of 0.22 [0.17, 0.26] L/min ( $p < 0.001$ ). There were no significant subgroup differences for any of the 9 subgroup analyses. Seventy-nine exercise interventions assessed the change in  $R\dot{V}O_{2peak}$ , revealing a significant increase of 2.8 [2.3, 3.3] mL/kg/min ( $p < 0.001$ ). There were significant subgroup differences for exercise modality ( $p = 0.002$ ) and length of intervention ( $p = 0.01$ ), but there were no other differences (Fig 3). Sixty-five exercise interventions assessed the change in PPO, revealing a significant increase of 11 [9,13] W ( $p < 0.001$ ). There were significant subgroup differences for TSI ( $p = 0.01$ ), neurological level of injury ( $p < 0.01$ ), exercise modality ( $p = 0.002$ ), and frequency ( $p < 0.001$ ) (Fig 3). There was significant heterogeneity present across all CRF outcomes ( $p < 0.001$ ), with  $I^2$  values of 72%, 53%, and 78% for  $A\dot{V}O_{2peak}$ ,  $R\dot{V}O_{2peak}$ , and PPO, respectively. Forest plots for each subgroup analysis are presented in Supporting information (S5 File).



**Fig 3.** Overview of the subgroup effects for relative peak oxygen uptake (A; RVO<sub>2peak</sub>) and peak power output (B; PPO) for pooled pre-post and RCT exercise interventions based on injury-specific characteristics (purple) and exercise intervention parameters (blue). Individual subgroup effects are highlighted in bold. Significant differences within each subgroup category are represented by green ticks, whereas subgroup categories without significant differences are represented by red question marks. AIS, American Spinal Injury Association Impairment Scale; FES, functional electrical stimulation; Mod-to-Vig, moderate-to-vigorous; NR/CD, not reported/cannot determine; RPE, rating of perceived exertion; VO<sub>2</sub>, volume of oxygen consumption W, watts.

<https://doi.org/10.1371/journal.pmed.1004082.g003>

An additional subgroup analysis grouped interventions into those that matched the CPET modality to the exercise intervention and those that did not. Following the adjustment for subgroup comparisons, there were no significant differences in  $\dot{A}\dot{V}O_{2\text{peak}}$ ,  $\dot{R}\dot{V}O_{2\text{peak}}$ , or PPO (S8 File). However, there were trends for a greater  $\dot{A}\dot{V}O_{2\text{peak}}$  ( $p = 0.05$ ) and  $\dot{R}\dot{V}O_{2\text{peak}}$  ( $p = 0.06$ ) in studies with matched CPET and intervention modalities in comparison to interventions without matched modalities. A sub-analysis for gait training interventions alone also revealed no subgroup differences between studies that used upper-body or treadmill CPETs to determine CRF outcomes (S9 File).

**3.2.5. Sensitivity analyses.** Leave-one-out analyses identified outliers for  $\dot{A}\dot{V}O_{2\text{peak}}$  [42,61,93] (S7 File). A sensitivity analysis for risk of bias revealed no differences in the pooled effects for low and high risk of bias studies (S7 File). A sensitivity analysis comparing studies with imputed data via conversion of medians (IQR), extrapolated data from figures, and studies without imputed data revealed no differences in the pooled effects for any outcome (S7 File).

**3.2.6. Study-design statistical power considerations.** Median statistical power and observed effect sizes for each CRF outcome and study design (i.e., pre-post studies compared to RCT interventions relative to controls) are reported in Fig 4. Across each CRF outcome, median statistical power was higher for the RCTs included in the primary meta-analysis in comparison to the pre-post studies. In general, this indicates that the RCT studies were designed to reliably detect a wider range of effect sizes in comparison to the pre-post studies.

**3.2.7. Meta-regression.** *Model 1—Participant and injury characteristics.* Exercise interventions with a greater mean age of participants were associated with smaller changes in the effect estimates for  $\dot{A}\dot{V}O_{2\text{peak}}$  ( $p = 0.08$ ) and  $\dot{R}\dot{V}O_{2\text{peak}}$  ( $p = 0.01$ ). The coefficients indicate that for every one-year increase in mean age of participants in an exercise intervention, the effect on  $\dot{A}\dot{V}O_{2\text{peak}}$  and  $\dot{R}\dot{V}O_{2\text{peak}}$  decreases on min and 0.041/min and 0.041 mL/kg/min, respectively, holding all other covariates constant (Table 1). There were no associations between the other moderator variables included in this model and  $\Delta\dot{A}\dot{V}O_{2\text{peak}}$  or  $\Delta\dot{R}\dot{V}O_{2\text{peak}}$ . While there were no significant associations between  $\Delta\text{PPO}$  and the other moderator variables (Table 1), there was a trend for an association between PPO and TSI ( $p = 0.18$ ). The coefficient for TSI indicates that for every additional year since injury, the effect on PPO following an exercise intervention decreases by 1.5W on average (Table 1).

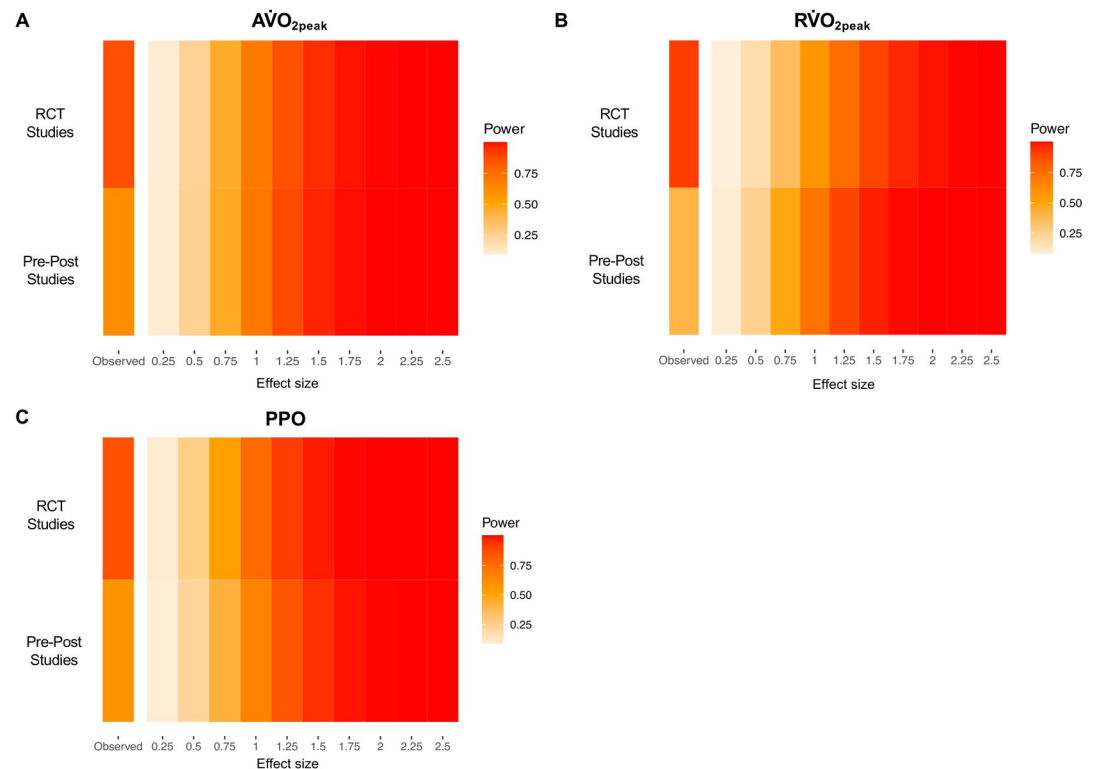
*Model 2—Exercise intervention and study characteristics.* There were no significant associations between the exercise intervention and study characteristics included in model 2 for  $\Delta\dot{A}\dot{V}O_{2\text{peak}}$ ,  $\Delta\dot{R}\dot{V}O_{2\text{peak}}$ , or  $\Delta\text{PPO}$  (Table 1).

**3.2.8. Small study effects.** Egger's tests for funnel plot asymmetry were not statistically significant for  $\dot{A}\dot{V}O_{2\text{peak}}$  ( $Z = -1.20$ ,  $p = 0.23$ ),  $\dot{R}\dot{V}O_{2\text{peak}}$  ( $Z = -0.44$ ,  $p = 0.66$ ), or PPO ( $Z = 0.76$ ,  $p = 0.45$ ). Funnel plots are provided in Supporting information (S5 File).

### 3.3. Additional meta-analyses

**3.3.1. Cross-sectional studies.** Eleven studies included cross-sectional data comparing CRF outcomes in active ( $n = 182$  participants) versus inactive ( $n = 134$  participants) individuals with SCI. Inactive participants were mainly classified as sedentary, whereas active participants varied from recreationally active wheelchair sport players to paralympic athletes. A meta-analysis of cross-sectional cohort studies revealed significantly ( $p < 0.001$ ) higher  $\dot{A}\dot{V}O_{2\text{peak}}$  [0.55 (0.43, 0.67) L/min],  $\dot{R}\dot{V}O_{2\text{peak}}$  [9.1 (7.0, 11.2) mL/kg/min], and PPO [38 (32, 45) W] in active compared to inactive individuals with SCI (S10 File). Given the significant heterogeneity in  $\dot{R}\dot{V}O_{2\text{peak}}$ , a sensitivity analysis was conducted to compare inactive individuals with either "active" or "elite athletes." There was a significantly higher  $\dot{R}\dot{V}O_{2\text{peak}}$





**Fig 4. Firepower plots visualising study-level statistical power for a range of effect sizes for pre-post studies alone in comparison to RCT studies included in the primary meta-analysis (i.e., exercise interventions relative to control groups) for each cardiorespiratory fitness outcome.** Hedges'  $g$  effect sizes were calculated for each study design and used as the observed effect size, as described by Quintana [54]. (A) Pre-post studies describing changes in absolute peak oxygen uptake ( $AVO_{2peak}$ ) had a median power of 62% for detecting an effect size of 0.90, whereas the RCTs had a median power of 86% for detecting an effect size of 1.25. (B) Pre-post studies describing changes in relative peak oxygen uptake ( $RVO_{2peak}$ ) had a median power of 41% for detecting an effect size of 0.67, whereas the RCTs had a median power of 91% for detecting an effect size of 1.57. (C) Pre-post studies describing changes in PPO had a median power of 58% for detecting an effect size of 0.91, whereas the RCTs had a median power of 86% for detecting an effect size of 1.13. PPO, peak power output; RCT, randomised-controlled trial.

<https://doi.org/10.1371/journal.pmed.1004082.g004>

[6.4 (4.7, 8.1) mL/kg/min,  $p < 0.001$ ] in “active” compared to inactive individuals, but an even higher  $\dot{V}O_{2peak}$  [11.2 (9.6, 12.9) mL/kg/min,  $p < 0.001$ ] in “elite athletes” compared to inactive (S10 File).

Seven studies ( $n = 581$  participants) included cross-sectional data and assessed associations between habitual physical activity level (as a continuous variable) and CRF outcomes (S11 File). Six studies assessed physical activity exposure using self-report methods [38,40,94–97], whereas 1 study used a validated research-grade wearable device [98]. The measurement period used to capture physical activity dimensions ranged from 3 to 7 days. There was considerable variability across studies with regards to the physical activity dimensions captured: hours per week of exercise/sport, minutes per day or week of mild, moderate, heavy-intensity for the subcategories of leisure time physical activity (LTPA), lifestyle or household activity or cumulative activity. Collectively, data indicates significant positive correlations of a larger magnitude between CRF/PPO outcomes and the volume of sport, exercise or LTPA rather than household activity. The only study to use a validated wearable device indicated that participants performing  $\geq 150$  min/week of moderate-to-vigorous physical activity (MVPA) had a significantly higher CRF relative to a low activity group (performing  $< 40$  min/wk). Whereas,

Table 1. Meta-regression models with adjusted values for each CRF outcome.

Covariate	Coef.	Std.Err.	t	Unadjusted P>t	95% CI	Adjusted P>t
<b>AVO<sub>2peak</sub> Model 1 (N = 74)<sup>1</sup> (#covariates = 5)</b>						
Male	0.005	0.003	1.530	0.131	-0.002, 0.012	0.448
Mean age	-0.003	0.001	-2.430	0.018	-0.005, -0.001	<b>0.083</b>
TSI	-0.000	0.001	-0.440	0.665	-0.003, 0.002	0.995
Injury class	0.003	0.003	0.850	0.398	-0.004, 0.009	0.899
Severity	-0.007	0.004	-1.910	0.061	-0.015, 0.000	0.219
<b>AVO<sub>2peak</sub> Model 2 (N = 74)<sup>2</sup> (#covariates = 6)</b>						
Exercise type	-0.009	0.014	-0.700	0.489	-0.037, 0.018	0.967
Exercise intensity	-0.010	0.015	-0.710	0.481	-0.039, 0.019	0.972
Intervention length	-0.000	0.002	-0.130	0.894	-0.004, 0.003	1.000
Minutes	0.004	0.008	0.490	0.626	-0.012, 0.020	0.994
Frequency	-0.012	0.011	-1.110	0.269	-0.035, 0.010	0.831
Volume	0.002	0.003	0.790	0.434	-0.003, 0.007	0.937
<b>RVO<sub>2peak</sub> Model 1 (N = 79)<sup>3</sup> (#covariates = 5)</b>						
Male	0.060	0.044	1.370	0.174	-0.027, 0.146	0.651
Mean age	-0.041	0.013	-3.200	0.002	-0.066, -0.015	<b>0.013</b>
TSI	-0.005	0.012	-0.430	0.666	-0.030, 0.019	0.996
Injury class	-0.031	0.047	-0.650	0.518	-0.125, 0.064	0.976
Severity	-0.044	0.040	-1.110	0.272	-0.124, 0.035	0.819
<b>RVO<sub>2peak</sub> Model 2 (N = 79)<sup>4</sup> (#covariates = 6)</b>						
Exercise type	-0.229	0.145	-1.580	0.120	-0.518, 0.061	0.497
Exercise intensity	-0.093	0.189	-0.490	0.622	-0.470, 0.283	0.996
Intervention length	-0.028	0.033	-0.870	0.385	-0.093, 0.036	0.930
Risk of bias	-0.034	0.329	-0.100	0.919	-0.690, 0.623	1.000
Minutes	-0.023	0.057	-0.400	0.687	-0.137, 0.091	0.998
Frequency	0.183	0.141	1.290	0.200	-0.099, 0.464	0.705
<b>PPO Model 1 (N = 65)<sup>5</sup> (#covariates = 5)</b>						
Male	-0.137	0.210	-0.650	0.518	-0.557, 0.284	0.972
Mean age	-0.057	0.073	-0.780	0.439	-0.204, 0.090	0.940
TSI	-0.153	0.069	-2.220	0.031	-0.291, -0.015	0.177
Injury class	0.005	0.173	0.030	0.978	-0.342, 0.351	1.000
Severity	-0.065	0.173	-0.380	0.707	-0.410, 0.280	0.997
<b>PPO Model 2 (N = 65)<sup>6</sup> (#covariates = 5)</b>						
Exercise type	-0.172	0.687	-0.250	0.803	-1.547, 1.203	0.999
Exercise intensity	-1.310	0.724	-1.810	0.076	-2.759, 0.140	0.202
Minutes	-0.064	0.314	-0.200	0.840	-0.693, 0.566	0.999
Frequency	0.288	0.687	0.420	0.676	-1.087, 1.664	0.989
Volume	-0.176	0.159	-1.110	0.272	-0.495, 0.142	0.669

Permutations = 10,000

<sup>1</sup> Adj R-squared = 14.49%; Model F(5,68) = 3.10; Prob > F = 0.01

<sup>2</sup> Adj R-squared = -6.11%; Model F(6,67) = 0.50; Prob > F = 0.80

<sup>3</sup> Adj R-squared = 10.57%; Model F(5,73) = 2.76; Prob > F = 0.02

<sup>4</sup> Adj R-squared = 5.0%; Model F(6,72) = 1.60; Prob > F = 0.16

<sup>5</sup> Adj R-squared = 2.98%; Model F(5,59) = 1.41; Prob > F = 0.23

<sup>6</sup> Adj R-squared = 0.23%; Model F(7,59) = 1.02; Prob > F = 0.41

Significance is highlighted in bold. Adj R<sup>2</sup>, proportion of between-study variance explained; AVO<sub>2peak</sub>, absolute peak oxygen consumption; Coef, coefficient of variation; Model F, joint test for all covariates; Prob > F, with Knapp-Hartung modification; RVO<sub>2peak</sub>, relative peak oxygen consumption; Std.Err, standard error; TSI, time since injury.

<https://doi.org/10.1371/journal.pmed.1004082.t001>

there was no significant difference in CRF between the low activity group and participants achieving the SCI-specific exercise guidelines (40 to 149 min/week) [98]. These data have been replicated in a recent study, which compared CRF outcomes for participants achieving either the SCI-specific exercise guidelines for fitness (40 to 89 min/week) and cardiometabolic health (90 to 149 min/week) [21] with the Exercise and Sport Science Australia (ESSA) position statement recommending that individuals with SCI achieve  $\geq 150$  min/week [24]. There were no differences in CRF outcomes between individuals classified as inactive and those meeting the current SCI-specific exercise guidelines, yet there were significant differences across all CRF outcomes between inactive individuals and those achieving the ESSA guidelines. Furthermore,  $\dot{A}V\text{O}_{2\text{peak}}$  and PPO were greater for individuals meeting the ESSA guidelines, relative to the current SCI-specific exercise guidelines. Across studies, significant, positive correlations were reported for the amount of moderate-to-vigorous LTPA or cumulative activity with CRF/PPO outcomes, which was not the case for mild or light-intensity activity.

**3.3.2. Observational inpatient rehabilitation or community free-living studies.** Six studies ( $n = 354$  participants) included observational longitudinal data and assessed changes in CRF outcomes following either standard of care inpatient rehabilitation [99–101] or a period of community free-living [99,102,103]. While 1 study described a training programme for elite-level wheelchair rugby players, it could not be determined whether players adhered to the prespecified training programme throughout the season, and therefore, the study was categorised as a community free-living observational study in this review [104]. The duration between assessments for standard of care varied, ranging from 5 to 28 weeks, whereas the follow-up period for community observations ranged from 30 weeks to 2.9 years. Reporting on the therapies used within standard of care was poor and only 1 study included a measurement of physical activity during the community-based free-living follow-up (self-reported mean sport activity) [102]. There were significant improvements following standard of care, but not following community-based free-living, in  $\dot{A}V\text{O}_{2\text{peak}}$  [0.12 (0.07, 0.17) L/min,  $p < 0.001$  versus 0.09 (0.00, 0.19) L/min,  $p = 0.06$ ] and  $\dot{R}V\text{O}_{2\text{peak}}$  [2.1 (1.0, 3.2) mL/kg/min,  $p < 0.001$  versus  $-0.5$  ( $-2.5, 1.5$ ) mL/kg/min,  $p = 0.64$ ] (S12 File). Significant improvements in PPO were identified following both standard of care [6 (3, 9) W,  $p < 0.001$ ] and community-based free-living [7 (2, 12) W,  $p = 0.006$ ] (S12 File).

**3.3.3. Exercise intensity comparisons from RCTs.** Seven RCTs compared changes in CRF outcomes between low and moderate ( $n = 52$  participants) and vigorous or supramaximal ( $n = 51$  participants) exercise intensity groups. These studies utilised upper-body aerobic exercise and gait training. A meta-analysis revealed no significant differences between low or moderate and vigorous or supramaximal intensity in  $\dot{A}V\text{O}_{2\text{peak}}$  ( $p = 0.67$ ),  $\dot{R}V\text{O}_{2\text{peak}}$  ( $p = 0.88$ ), or PPO ( $p = 0.62$ ) (S13 File).

### 3.4. Risk of bias

Full risk of bias assessments for pre-post and RCT interventions can be found in Supporting information (S4 and S5 and S13 Files). Twenty-six pre-post studies were rated as having good, 27 as having fair, and 14 as having poor methodological quality. Six RCTs were rated as having a low risk of bias, 8 as having some concerns, and 15 as having a high risk of bias. The most common domains in the RCTs with either some concerns or high risk were “bias in the measurement of the outcome” and “bias in selection of the reported result.” Reporting was inadequate in many of the included studies, which made the assessment of risk of bias challenging. Notably, reporting of blinding, eligibility, or selection criteria, as well as the enrolment of participants (i.e., a lack of CONSORT flow diagrams) was poor. Individual risk of bias assessments for every study design are provided in Supporting information (S4 and S5 and S10–S13 Files).

### 3.5. Evidence appraisal using GRADE

Overall, the GRADE assessment revealed a “Moderate” certainty in the body of evidence for improvements in  $\dot{V}O_{2\text{peak}}$ , but a “Low” certainty in the body of evidence for improvements in  $\dot{A}V\dot{O}_{2\text{peak}}$  and PPO (Table 2). The certainty rating for  $\dot{A}V\dot{O}_{2\text{peak}}$  was downgraded due to imprecision and a lack of high-quality study designs, whereas  $\dot{V}O_{2\text{peak}}$  was downgraded as a result of imprecision. The certainty rating for PPO was downgraded due to imprecision and inconsistency, resulting from considerable heterogeneity in the included exercise interventions.

## 4. Discussion

This review provides a large evidence-based summary and appraisal of prescribed and prospective exercise interventions >2 weeks and changes in CRF in individuals with SCI. The results from the primary meta-analysis of RCTs support the role of exercise in improving CRF in this population by 0.16 L/min and 9W in  $\dot{A}V\dot{O}_{2\text{peak}}$  and PPO, respectively. The primary meta-analysis also indicates a clinically meaningful change in  $\dot{V}O_{2\text{peak}}$  of 2.9 mL/kg/min. Subgroup analyses in the pooled meta-analysis revealed no differences in  $\dot{A}V\dot{O}_{2\text{peak}}$  with respect to injury characteristics and exercise intervention parameters. However, there were differences in  $\dot{V}O_{2\text{peak}}$  based on exercise modality and length of intervention. There were also significant subgroup differences for PPO based on TSI, neurological level of injury, exercise modality, and frequency of sessions per week. The GRADE assessment including RCTs and pre-post intervention studies revealed “Moderate” certainty in the evidence for improvements in  $\dot{V}O_{2\text{peak}}$ , yet “Low” certainty in the evidence for significant improvements in  $\dot{A}V\dot{O}_{2\text{peak}}$  and PPO.

Following exercise interventions,  $\dot{V}O_{2\text{peak}}$  increases in individuals with both acute and chronic SCI. However, this review highlights the need for more exercise interventions in the acute phase post-SCI. Indeed, a recent review by Van der Scheer and colleagues [35] rated the confidence in the evidence base for exercise in acute SCI as “Very Low,” and called for more RCTs to control for the deteriorations in fitness and health occurring almost immediately following SCI. With regards to PPO in the current review, the meta-regression revealed a trend for an association between TSI and changes in PPO, with individuals with long-term injuries exhibiting smaller changes in PPO in comparison to those with relatively newer injuries. The subgroup analysis based on TSI also revealed that individuals with acute SCI exhibit a greater change than individuals with chronic SCI. This may be due to exercise being delivered in combination with standard of care inpatient rehabilitation for individuals with acute injuries, representing an additive effect. Indeed, the additional meta-analysis with longitudinal observational studies indicates a 6W improvement in PPO with standard of care inpatient rehabilitation alone during the subacute period. This could be influenced by spontaneous motor recovery in the first few months following SCI [105]. Or alternatively, this subacute period may provide a familiarisation effect to novel modalities of exercise that patients were previously unaccustomed to and/or provides a notable stimulus to naive upper-body musculature following a period of bed rest and deconditioning, possibly representing a regression to the mean artefact. Ultimately, more rigorous RCTs are required in the subacute phase post-SCI that compare standard of care versus standard of care plus a specific exercise intervention to truly quantify the independent effects of a prescribed exercise intervention in the inpatient setting.

Exercise results in improved  $\dot{V}O_{2\text{peak}}$  regardless of the neurological level of injury. In particular, this review reveals a pooled improvement of 5.9 mL/kg/min in studies that included only

**Table 2. Grading of recommendations assessment, development, and evaluation analysis for each CRF outcome.**

	AVO <sub>2peak</sub> (L/min)	RVO <sub>2peak</sub> (mL/kg/min)	PPO (W)
Summary of findings according to GRADE analysis			
GRADE	LOW	MODERATE	LOW
Comments	<p>Our confidence in the effect estimate is limited: The true effect may be substantially different from the estimate of the effect.</p> <p>Study design and imprecision reduced the GRADE to Low.</p> <p>The evidence supporting improvements in AVO<sub>2peak</sub> is predominantly in young and middle-aged males that had been injured for &gt;1-year (chronic TSI). Participants were mostly paraplegic (67%) but there were a mixture of injury severities (AIS A-D).</p> <p>There were no subgroup differences to suggest optimal training parameters.</p>	<p>We are moderately confident in the effect estimate: The true effect is likely to be close to the estimate of the effect, but there is a possibility that it is substantially different.</p> <p>Imprecision reduced the GRADE to Moderate.</p> <p>The evidence supporting improvements in RVO<sub>2peak</sub> is predominantly in young and middle-aged males that had been injured for &gt;1-year (chronic TSI). Participants were mostly paraplegic (69%) but there were a mixture of injury severities (AIS A-D).</p> <p>Please see Fig 3 for subgroup effects.</p>	<p>Our confidence in the effect estimate is limited: The true effect may be substantially different from the estimate of the effect.</p> <p>Inconsistency and imprecision reduced the Grade to Low.</p> <p>The evidence supporting improvements in PPO is predominantly in young and middle-aged males that had been injured for &gt;1-year (chronic TSI). Participants were mostly paraplegic (73.5%) but there were a mixture of injury severities (AIS A-D).</p> <p>Please see Fig 3 for subgroup effects.</p>
Lower quality criteria			
Study design	<p>Mixture of RCTs and pre-post studies with no control groups.</p> <p>Overall WMDs for RCT interventions relative to controls and pre-post interventions only: RCTs (0.16 L/min) and pre-post studies (0.23 L/min).</p> <p>DOWNGRADE</p>	<p>Mixture of RCTs and pre-post studies with no control groups.</p> <p>Overall WMDs for RCT interventions relative to controls and pre-post interventions only: RCTs (2.9 mL/kg/min) and pre-post studies (2.9 mL/kg/min).</p> <p>NO DOWNGRADE</p>	<p>Mixture of RCTs and pre-post studies with no control groups.</p> <p>Overall WMDs for RCT interventions relative to controls and pre-post interventions only: RCTs (9 W) and pre-post studies (11 W).</p> <p>NO DOWNGRADE</p>
Risk of bias (RoB)	<p>Sensitivity analysis revealed no significant difference between studies with low and high risk of bias.</p> <p>NO DOWNGRADE</p>	<p>Sensitivity analysis revealed no significant difference between studies with low and high risk of bias.</p> <p>NO DOWNGRADE</p>	<p>Sensitivity analysis revealed no significant difference between studies with low and high risk of bias.</p> <p>NO DOWNGRADE</p>
Inconsistency of results	<p>Effect estimates were consistent, with 89% of the included exercise interventions favouring an increase in AVO<sub>2peak</sub>, but most had a low effect estimate. Large overlap in confidence intervals.</p> <p>I<sup>2</sup> = 72%</p> <p>NO DOWNGRADE</p>	<p>Effect estimates were consistent, with 92% of the included exercise interventions favouring an increase in RVO<sub>2peak</sub>, and most had a large effect estimate. Large overlap in confidence intervals.</p> <p>I<sup>2</sup> = 53%</p> <p>NO DOWNGRADE</p>	<p>Effect estimates were consistent, with 94% of the included exercise interventions favouring an increase in PPO, and most had a large effect estimate. Large overlap in confidence intervals.</p> <p>I<sup>2</sup> = 78%</p> <p>DOWNGRADE</p>
Indirectness	<p>Most studies (81%) included AVO<sub>2peak</sub> in their main outcome measures, across a range of participant characteristics.</p> <p>NO DOWNGRADE</p>	<p>Most studies (68%) included RVO<sub>2peak</sub> in their main outcome measures, across a range of participant characteristics.</p> <p>NO DOWNGRADE</p>	<p>Most studies (80%) included PPO in their main outcome measures, across a range of participant characteristics.</p> <p>NO DOWNGRADE</p>
Imprecision	<p>Large sample size (N = 779), however, 66% of the included exercise interventions had 95% CI overlap 0.</p> <p>DOWNGRADE</p>	<p>Large sample size (N = 778), however, 75% of the included exercise interventions had 95% CI overlap 0.</p> <p>DOWNGRADE</p>	<p>Large sample size (N = 647), however, 65% of the included exercise interventions had 95% CI overlap 0.</p> <p>DOWNGRADE</p>
Small study effects	<p>An exhaustive approach was used during the search strategy (i.e., several scientific databases).</p> <p>Egger's test: Z = -1.20 (p = 0.23). Visual inspection of the funnel plots, data extraction sheets and Tables C and D of S5 File revealed no noticeable small study effects.</p> <p>NO DOWNGRADE</p>	<p>An exhaustive approach was used during the search strategy (i.e., several scientific databases).</p> <p>Egger's test: Z = -0.44 (p = 0.66). Visual inspection of the funnel plots, data extraction sheets and Tables C and D of S5 File revealed no noticeable small study effects.</p> <p>NO DOWNGRADE</p>	<p>An exhaustive approach was used during the search strategy (i.e., several scientific databases).</p> <p>Egger's test: Z = 0.76 (p = 0.45). Visual inspection of the funnel plots, data extraction sheets and Tables C and D of S5 File revealed no noticeable small study effects.</p> <p>NO DOWNGRADE</p>
Higher quality criteria			
Large effect	<p>Yes</p> <p>Z = 9.90 (p &lt; 0.001)</p> <p>NO UPGRADE</p>	<p>Yes</p> <p>Z = 9.80 (p &lt; 0.001)</p> <p>NO UPGRADE</p>	<p>Yes</p> <p>Z = 9.07 (p &lt; 0.001)</p> <p>NO UPGRADE</p>
Dose response	<p>No clear dose response.</p> <p>NO UPGRADE</p>	<p>No clear dose response.</p> <p>NO UPGRADE</p>	<p>No clear dose response.</p> <p>NO UPGRADE</p>

(Continued)

Table 2. (Continued)

	AVO <sub>2peak</sub> (L/min)	RVO <sub>2peak</sub> (mL/kg/min)	PPO (W)
Residual confounding	Mixture of exercise modalities, levels of injury, etc. NO UPGRADE	Mixture of exercise modalities, levels of injury, etc. NO UPGRADE	Mixture of exercise modalities, levels of injury, etc. NO UPGRADE

GRADE certainty in the evidence can be “High,” “Moderate,” “Low” or “Very Low” according to published guidelines [34]. Judgement on risk of bias followed Cochrane guidance whereby certainty would be downgraded if the reviewers judged that the high risk of bias studies had influenced the pooled effects. Wide variance of point estimates, minimal or no overlap of confidence intervals, and heterogeneity were included as criteria of inconsistency. For heterogeneity, an outcome with  $I^2 > 75\%$  was classed as considerable and resulted in a downgrade. Imprecision was downgraded where  $> 50\%$  of studies had confidence intervals overlap the no effect line. Indirectness would have been downgraded where  $< 50\%$  of studies did not include the appropriate main outcome measure or assess a range of participant characteristics. Overall effect sizes are presented as Z-scores. Statistical significance accepted as  $p < 0.05$ .

AIS, American Spinal Injury Association Impairment Scale; AVO<sub>2peak</sub>, absolute peak oxygen consumption; CI, confidence intervals; CRF, cardiorespiratory fitness; PPO, peak power output; RCTs, randomised controlled trials; RoB, risk of bias; RVO<sub>2peak</sub>, relative peak oxygen consumption; VO<sub>2</sub>, peak oxygen consumption.

<https://doi.org/10.1371/journal.pmed.1004082.t002>

individuals with tetraplegia ( $N = 3$  interventions). For comparison, there is a considerably larger evidence-base for studies including only individuals with paraplegia ( $N = 31$  interventions). A recent systematic review suggested that aerobic exercise results in minimal returns on investment in individuals with tetraplegia, with  $\dot{V}O_{2peak}$  improving on average only 9% following 10 to 37 weeks of training [106]. However, their review excluded studies with a sample size  $< 10$ . Consequently, the Dicarlo study [93], which reported a 94% increase in  $\dot{V}O_{2peak}$ , was excluded from their analysis. While the inclusion of this study in the current analysis may have augmented the overall effect, as identified by our leave-one-out analysis, there was nothing untoward in this study to suggest a reason for this exaggerated response. Therefore, our findings indicate that exercise improves CRF in individuals with tetraplegia and that the magnitude of change is not significantly different to individuals with paraplegia.

However, the pooled meta-analysis highlights that individuals with paraplegia (16W) are likely to accrue greater absolute changes in PPO than those with tetraplegia (9W). Typically, higher neurological levels of injury result in a loss of trunk control, motor impairments in the upper-limbs, and reduced mechanical efficiency, compared to lower levels of injury [107,108]. Therefore, individuals with tetraplegia may not have the physical or motor capacity to adapt as effectively as individuals with paraplegia, and thus could experience a ceiling effect with training. Indeed, a recent study identified lesion level as a significant predictor of PPO in a group of handcyclists with SCI [109]. To account for baseline motor function differences between individuals with tetraplegia and paraplegia, we determined relative percentage change for studies that included upper-body aerobic exercise interventions only. The relative percentage change was similar between neurological level of injury classifications: 46% tetraplegia ( $N = 1$  interventions) versus 53% paraplegia ( $N = 9$  interventions). While only 1 tetraplegia-only intervention was included in this subgroup analysis [110], normalising for baseline values seems to indicate similar relative magnitudes of change in PPO.

Williams and colleagues [111] recently demonstrated that individuals with a lower level of injury ( $< T6$ ) significantly improved PPO compared to individuals with a higher level of injury ( $\geq T6$ ), suggesting a potential role of disrupted cardiovascular control in mediating changes in PPO [112,113]. While methods for ameliorating the consequences of reduced sympathetic cardiovascular control typically associated with injuries  $\geq T6$  have been investigated (e.g., abdominal binding [114], lower-body positive pressure [115], and midodrine [116]), the evidence for an improved CRF is still mixed. A recent case report has indicated that epidural spinal cord

stimulation (SCS) can safely and effectively restore cardiovascular control and improve CRF [117]. With an explosion in SCS studies over the last few years [118], particularly including transcutaneous SCS, the pairing of exercise with novel and noninvasive neuromodulatory approaches will likely continue to receive considerable research attention. Future, adequately powered research may want to consider separating participants into paraplegic and tetraplegic groups or dichotomize by injuries above and below T6 to account for differences in sympathetic cardiovascular control. Currently, there is a paucity of studies analysing data in this fashion, which limits our understanding of how neurological level of injury and the degree of impaired sympathetic cardiovascular control influences the magnitude of change in CRF following an exercise intervention. Researchers may want to consider conducting a battery of autonomic nervous system stress tests at baseline (e.g., Valsalva manoeuvre, head-up tilt, sympathetic skin responses [119]) to determine the degree of supraspinal sympathetic disruption rather than relying on a neurological level of injury derived from a motor-sensory examination. This is important as recent research has indicated that cardiovascular instability cannot be predicted by motor-sensory level and completeness of SCI [120].

There were no significant subgroup differences in CRF based on injury severity. However, the subgroup analysis suggests that individuals with a motor-incomplete SCI may not yield PPO improvements of the same magnitude as individuals with a motor-complete SCI. This is most likely due to the majority of motor-incomplete studies implementing gait training as its exercise modality, which we reveal is the least effective modality for improving CRF. The gait training interventions that measured PPO ( $N = 2$  interventions) used ACE as the CPET modality, demonstrating no transfer effect from lower-body to upper-body exercise. During data extraction, reviewers noted poor reporting of injury severity in a number of studies. While this may be due to older studies having used alternative severity scales (e.g., International Stoke Mandeville Games Federation or Frankel), researchers should endeavour to perform an International Standards for Neurological Classification of SCI (ISNCSCI) exam during screening, and subsequently report an AIS grade, to enable better comparisons to be made between injury severities in the future.

Van der Scheer and colleagues [35] concluded that there was high certainty in the evidence that exercise interventions  $\geq 2$  weeks can improve CRF in young and middle-aged adults. However, they revealed that there was a lack of studies exploring the effects of exercise in older adults with SCI ( $>65$  years). The oldest mean age included in our review is 57.9 years [121], and thus supports their call for more research to be conducted in the older SCI population. Interestingly, our meta-regression identified that exercise interventions with participants with a higher mean age were associated with smaller changes in  $\dot{V}O_{2peak}$ , suggesting that older adults do not achieve the same CRF benefits as younger or middle-aged adults. This is not surprising given the progressive physical deconditioning that occurs naturally with age, as previously shown in the non-injured population [122]. Research indicates that SCI represents a model of advanced ageing [123], with the ageing process being exacerbated in individuals with SCI possibly due to diminished mobility independence resulting in physical deconditioning. Older adults with SCI find it harder to change body position, transfer, and move around independently in comparison to younger adults with SCI [124]. Moreover, it has been suggested that older adults with SCI do not perform volumes or intensities of leisure time physical activity required to achieve fitness benefits [125]. These changes will likely result in reduced incidental physical activity outside of a prescribed exercise intervention. Ageing skeletal muscle is also susceptible to mitochondrial dysfunction, which may be related to chronic inflammation (e.g., “inflammaging”), possibly explaining the diminished responses in CRF for older adults with SCI. Future research may want to investigate optimal strategies for improving CRF in

older adults. Moreover, there is a need for more longitudinal studies that explore the age-related decline in CRF in the SCI population and whether this is accelerated relative to the non-injured population.

Despite a number of recent reviews summarising the effects of specific exercise modalities on the change in CRF following SCI, including aerobic ACE [126], FES-cycling [36], and aerobic plus muscle strength training (mixed multimodal) interventions [127], to the best of our knowledge our pooled meta-analysis is the first to directly compare changes in CRF across a wide range of exercise modalities in individuals with SCI. This review revealed there was a significant subgroup difference in  $\dot{V}O_{2peak}$ , with the greatest changes gained via upper-body aerobic exercise or resistance training. The change in  $\dot{V}O_{2peak}$  for upper-body aerobic exercise in the current review (21%) is equivalent to the average 21% improvement reported in a recent systematic review on the effects of ACE in chronic SCI [126]. While the current review did not exclusively investigate ACE, it is evident that aerobic, volitional upper-body exercise training can improve CRF in individuals with SCI. Activating larger amounts of skeletal muscle mass via FES exercise interventions also appears to improve  $\dot{V}O_{2peak}$ , yet it is noteworthy that more accessible and less expensive training modalities such as aerobic and resistance training may yield similar or even greater increases in  $\dot{V}O_{2peak}$ , despite utilising less muscle mass. Additionally,  $\dot{V}O_{2peak}$  improves following multimodal/hybrid exercise interventions, which challenges a 2015 review reporting inconclusive findings on the effects of combined upper-body aerobic and muscle strength training on CRF [127]. Yet, as the current review included a wide range of interventions not restricted to the upper-body (e.g., aquatic treadmill [63], hybrid cycling [64,69,128], multimodal exercises [129,130]), it is recommended that more research is conducted to delineate whether the improvements in  $\dot{V}O_{2peak}$  with multimodal/hybrid exercise interventions are due to the combination of upper- and lower-body exercise modalities, or due to concurrent training modalities that predominantly use the upper-body (e.g., aerobic plus muscle strength training). Finally, both gait training and behaviour change interventions appear less effective at improving  $\dot{V}O_{2peak}$  and PPO.

Aerobic, upper-body exercise and resistance training modalities demonstrate the greatest improvements in PPO, by 15W and 20W, respectively. It is perhaps unsurprising that resistance training resulted in the largest change in PPO given that these interventions included upper-body exercises prescribed to increase muscular strength, as shown by Jacobs and colleagues [131]. Volitional exercise, as opposed to activity-based therapy modalities (i.e., interventions that provide activation of the neuromuscular system below the level of lesion with the goal of retraining the nervous system, such as FES and gait training), may therefore be more beneficial at improving PPO. Ultimately, these improvements have important ramifications for individuals with SCI that are dependent on performing functional upper-body movements such as transfers or wheelchair propulsion [99,103] and may lead to increased quality of life with more functional independence [132].

Several studies directly compared the effects of specific exercise modalities on the change in CRF [42,63,86]. Notably, Gorman and colleagues [63] demonstrated that there were no transfer effects from a robotic treadmill exercise intervention to ACE performance in a CPET. This review also demonstrates a trend for greater changes in  $\dot{V}O_{2peak}$  when the CPET modality is matched to the intervention (S8 File). Therefore, researchers should endeavour to match the CPET modality to their chosen exercise intervention or at the very least be careful when interpreting changes in CRF when using different modalities.

The current SCI-specific exercise guidelines recommend that exercise should be performed at a moderate-to-vigorous intensity [21]. A recent overview of systematic reviews also advocated the use of moderate-to-vigorous intensity for improving aerobic fitness [133]. The



current pooled meta-analysis demonstrates robust improvements across all CRF outcomes for interventions prescribing exercise at this particular intensity. Furthermore, the additional analysis including cross-sectional studies reveals significant associations of a greater magnitude between MVPA and CRF, as compared to lower-intensity activity. Despite this, our classification of moderate-to-vigorous exercise intensity spans 2 of the ACSM exercise intensity thresholds (S2 File). There may be considerable variation in the actual intensity performed by participants given the noticeable range across the 2 thresholds (e.g., 46% to 90%  $\dot{V}O_{2peak}$ , 64% to 95%  $HR_{peak}$ , 12 to 17 RPE). Therefore, individuals with SCI and exercise practitioners should be cautious when prescribing such a broad exercise intensity.

The additional meta-analysis comparing RCT exercise intensities reveals similar changes in CRF outcomes between moderate- and vigorous-intensity interventions. This is in agreement with a previous review [30] and supports the viewpoint from a special communication on high-intensity interval training (HIIT) [31], which suggested that vigorous-intensity exercise is more time efficient and may result in similar if not superior CRF and skeletal muscle oxidative capacity improvements in comparison to moderate-intensity exercise. Interestingly, in a response to a Letter-to-the-Editor [27], the SCI-specific exercise guideline developers acknowledge the need for shorter, effective protocols to be documented in the literature [134]. Furthermore, recent evidence has suggested that HIIT may be more enjoyable than moderate-intensity exercise for individuals with SCI [135], and so this form of training may offer a more time efficient and readily available alternative to moderate-intensity protocols. In the current review, a number of HIIT-based ACE, wheelchair propulsion, and FES hybrid cycling and skiing interventions demonstrated improvements in CRF [69,92,128,136–140]. The potential of “real-world” strategies such as virtual HIIT have also been discussed in a recent review by McMillan and colleagues [141]. Future exercise interventions should look to compare the effects of different HIIT modalities/protocols (i.e., virtual home-based HIIT versus supervised arm-crank HIIT, the most appropriate number and/or length of intervals and recovery periods, vigorous or supramaximal exercise intensities) before concrete recommendations can be made on the most optimal HIIT prescription for improving CRF. While efforts are ongoing to corroborate the safety and feasibility of HIIT [32,92,142], both researchers and individuals with SCI should be vigilant in identifying risks associated with HIIT such as shoulder discomfort or pain, skin irritation or pressure sores caused by abrasive movements, or increased spasticity, along with monitoring for post-exercise hypotension [143]. As higher-intensity exercise generates a greater metabolic heat load than lower-intensity exercise, which increases core body temperature, considerations should be made for individuals with higher neurological levels of injury exercising at a high-intensity and/or in warm to hot ambient temperatures given their greater likelihood of experiencing thermoregulatory issues [144]. General contraindications for performing HIIT have been discussed in the non-injured population [145] yet they also apply for individuals with SCI.

This review reveals that  $R\dot{V}O_{2peak}$  and PPO improve regardless of the method used to prescribe exercise intensity. However, with regards to PPO, although not significant the subgroup analysis indicates that the magnitude of change is greater when prescribing intensity via indices of HR (i.e., % $HR_{peak}$ , % $HR_{max}$ , %HRR) or  $\dot{V}O_2$  (i.e., % $\dot{V}O_{2peak}$ , % $\dot{V}O_{2reserve}$ ), compared to RPE and workload. A recent systematic review concluded that exercise interventions using RPE to prescribe relative exercise intensities improved PPO in individuals with SCI [146]. Previous research has revealed that RPE results in inter-individual responses to exercise, with the potential for 2 individuals to perform the same bout of exercise either above or below lactate threshold despite being prescribed the same perceptually regulated intensity, which prevents the development of SCI-specific RPE recommendations [147]. These differences identified in

our meta-analysis may also be due to individuals with SCI being unaccustomed to subjective measures of exertion. Accordingly, there have been calls for better reporting of the standardisation and familiarisation procedures used for RPE [146] and its use has only tentatively been recommended until the evidence base is expanded [148]. Therefore, it seems plausible to suggest that the blunted improvements in PPO with intensity prescribed via RPE, as compared to other prescription methods, may have resulted from insufficient familiarisation before an exercise intervention.

Although HR and  $\dot{V}O_2$  have long been used to prescribe exercise intensity, these approaches can result in large training ranges and ignore individual metabolic responses. Particularly, issues may arise with using HR for individuals with a neurological level of injury  $\geq T6$ , given that these individuals typically exhibit a lower  $HR_{peak}$  [149]. The use of fixed percentages (i.e.,  $\%HR_{peak}$ ,  $\%\dot{V}O_{2peak}$ ) in the non-injured population has been questioned [150] and has recently been investigated in individuals with SCI, whereby Hutchinson and colleagues [56] showed that fixed  $\%HR_{peak}$  and  $\%\dot{V}O_{2peak}$  could not guarantee a homogenous domain-specific exercise intensity prescription. Notably, individuals were spread across moderate, heavy, and severe domains at the “moderate” and “vigorous” intensity classifications; thereby questioning whether the “moderate-to-vigorous” terminology used in the SCI-specific exercise guidelines is suitable for adults with SCI.

Given that prescribing exercise intensity via HR and  $\dot{V}O_2$  can typically be resource and cost-intensive, there is some scope for using RPE as a cheaper and more practical method for community-based exercise prescription. However, this may not be as effective as other objective methods. Future research should aim to identify the optimal methods of exercise intensity prescription, as well as consider revisiting the current “moderate-to-vigorous intensity” recommendations. Moreover, further research may want to consider using traditional intensity anchors (e.g., the gas exchange threshold, critical power, or lactate threshold) rather than prescribing exercise relative to physiological thresholds to see whether this results in more homogeneous CRF responses to exercise, given research in non-injured individuals suggests this may increase the precision of exercise intensity prescription [151,152]. However, it is worth acknowledging that it is not always possible to identify such traditional intensity anchors in individuals with higher levels of SCI [153,154].

Subgroup analyses based on frequency of sessions and exercise volume reveal no differences in  $\dot{V}O_{2peak}$ , thereby supporting the minimal volume of exercise required to attain CRF benefits in individuals with SCI. Furthermore, although there are no statistically significant subgroup differences for PPO based on exercise volume, there is a greater magnitude of change observed for individuals exercising 90 to 149 min/wk in comparison to 40 to 89 min/wk (12W versus 7W change, respectively). A greater weekly exercise volume may therefore accrue greater changes in PPO and, as already described, may be important in improving the capacity to perform daily tasks such as bed or wheelchair transfers [99,103]. Although changes in  $\dot{V}O_{2peak}$  are relatively similar between each exercise volume subgroup, and thus corresponding exercise guidelines, the additional meta-analysis on cross-sectional cohorts indicates a significant cumulative impact of prolonged participation in physical activity and exercise. To support this point, a sensitivity analysis revealed a larger difference in  $\dot{V}O_{2peak}$  between inactive individuals and elite athletes, compared to between inactive and active individuals, suggesting that those who exercise more exhibit a greater CRF. Indeed, 2 cross-sectional association studies [40,98] reported significantly higher CRF in individuals with SCI that were habitually performing greater volumes of physical activity. Looking forward, longitudinal RCTs with multiple intervention arms would be the best way to explore dose-response changes with regards to differing volumes of exercise, as has been done in the non-injured population [155–158].

Subgroup analysis based on length of intervention indicated that exercise interventions of 12 weeks or less yield greater changes in  $\dot{V}O_{2\text{peak}}$  than those lasting >12 weeks. This may be explained by compliance and adherence issues during prolonged interventions (i.e., >12 weeks). Indeed, the 2 behaviour change studies included in this subgroup analysis observed minimal changes in  $\dot{V}O_{2\text{peak}}$  following 16 [82] and 24 weeks [39]. This perhaps emphasises the benefit of short and intensive exercise interventions  $\leq 12$  weeks as well as the need for supervised exercise sessions in prolonged interventions to ensure compliance and meaningful changes in  $\dot{V}O_{2\text{peak}}$ .

Adverse events were reported for at least 3.7% of the total included participants, with the majority of events related to skin irritation, pressure sores, or ulcers. Qualitatively, there was no particular exercise modality that suggested an increased risk for an adverse event, but higher-intensity exercise appeared to reveal more adverse events, albeit being swayed by 1 study in particular [130]. Reporting was poor in a number of studies with reviewers at times unable to determine the exact number of events per participant. Furthermore, there is generally a lack of follow-up assessments following exercise interventions, so it is currently unknown whether there are any detrimental long-term effects of exercise in the SCI population. Going forward, researchers are encouraged to follow a standardised adverse event reporting procedure (including serious and nonserious adverse events) and ensure that they are transparent with reporting of both the nature and the total numbers of each event, either related or unrelated to the exercise intervention.

#### 4.1. Strengths and limitations of the review and future directions

**4.1.1. Limitations of the included studies.** Poor reporting of injury characteristics and exercise parameters prevented a perfect comparison of exercise interventions. Overall, studies could have provided more precise descriptions of training parameters to aid with any future refinements to the SCI-specific exercise guidelines. Reporting of adherence to interventions was also poor and should be encouraged to provide an indication of the feasibility or applicability of specific exercise interventions for individuals with SCI. Moreover, adverse events should be transparently reported, even if none occur so that practitioners are able to identify forms of exercise that are most likely to be safe for this population. Additionally, studies typically failed to utilise the training principle of progression, which during prolonged exercise interventions is essential for preventing a plateau in training adaptations and perhaps particularly important in this population for supporting the transition from an inactive lifestyle to higher levels of activity, and ultimately achieving greater CRF benefits [24]. On the whole, the reporting of  $\dot{V}O_{2\text{peak}}$  attainment criteria was poor, with only 24% of the included exercise interventions using at least 2 criterion methods for identifying when an individual had reached peak capacity, as recently recommended by Alrashidi and colleagues [159]. At least 2 methods [e.g., RPE  $\geq 17$ , respiratory exchange ratio (RER)  $\geq 1.1$ , plateau in oxygen uptake] should be adopted for confirming the attainment of a true  $\dot{V}O_{2\text{peak}}$  to prevent magnitudes of change in CRF from being inflated or underestimated. Furthermore, to the best of our knowledge, only 30% of interventions had a prospectively registered clinical trial entry and only 7.7% had a protocol manuscript published. To sustain the integrity and transparency of reporting in this field, researchers are encouraged to prospectively register any planned clinical trials using publicly available repositories.

The risk of bias assessments on pre-post studies revealed that no study conducted multiple baseline or follow-up assessments. While often time-consuming and impractical with larger sample sizes, multiple assessments ensure reproducibility by accounting for any technical or biological variation, as shown previously in non-injured individuals at risk for type 2 diabetes

[160]. In the SCI population, individuals are typically deconditioned and often exhibit variable responses to a CPET. This variance may be explained by profound blood pressure instability [161], including unintentional “boosting” via episodes of autonomic dysreflexia [162]. Researchers should therefore consider performing multiple CPETs at baseline and follow-up to attain reliable assessments of CRF.

There are also several limitations with regards to the studies included in the additional meta-analyses for this review. First, there is only 1 cross-sectional study using a research-grade wearable device to investigate the association between physical activity and CRF [98]. While self-report questionnaires are valid tools for estimating levels of physical activity [97,163–165], there are important drawbacks including the difficulty of accurately capturing intensity, lack of questionnaires measuring activities of daily living, and recall bias. Secondly, there is a lack of RCTs comparing near-maximal, maximal, or supramaximal exercise intensities to moderate-intensity exercise. The only supramaximal intervention included in this review demonstrated a 17W improvement in PPO [139]. The inclusion of more RCTs comparing vigorous-intensity to lower-intensity exercise could identify whether there are, in fact, benefits to performing shorter but more vigorous-intensity exercise bouts, in comparison to longer continuous forms of exercise.

**4.1.2. Strengths and limitations of the review.** A major strength of the current study is that we pre-planned and prospectively registered (PROSPERO ID CRD42018104342) our systematic review. We used GRADE to assess the certainty in the body of evidence and used quality appraisal tools for the specific study designs included in this review. Our GRADE assessment demonstrates generalisability within the SCI population, through the inclusion of participants across the lifespan and with a wide range of injury characteristics. Yet, the “Low” confidence in the evidence for  $\dot{A}V\dot{O}_{2\text{peak}}$  and PPO emphasises the need for more rigorous RCT exercise interventions to address current gaps in the literature [35]. The disparity in GRADE confidence ratings across the specific CRF outcomes is likely a factor of the variability of the total number of included interventions across outcomes  $\dot{A}V\dot{O}_{2\text{peak}}$  ( $N = 74$ ),  $\dot{R}V\dot{O}_{2\text{peak}}$  ( $N = 79$ ), and PPO ( $N = 65$ ).

As there were not enough RCTs to perform subgroup comparisons and a meta-regression on this study design specifically, we pooled pre-post ( $N = 81$ ) and RCT ( $N = 36$ ) exercise interventions. This is in accordance with Cochrane guidance stating that the inclusion of non-randomised study designs is justified when there are only a small number of RCTs available to provide evidence on the effects of interventions [51]. To consider this limitation, we generated firepower plots to explore the statistical power of the included RCTs and pre-post studies. These plots demonstrate that the RCTs had greater median statistical power across CRF outcomes and were designed to reliably detect a wider range of effect sizes than the pre-post studies. However, the changes in  $\dot{R}V\dot{O}_{2\text{peak}}$  and PPO in the primary meta-analysis of RCT interventions relative to controls (2.9 mL/kg/min and 9W, respectively) are similar to those reported in the pooled meta-analysis (2.8 mL/kg/min and 11W, respectively), and thus confirms the robustness of our overall findings. Furthermore, our rigorous approach of adjusting for multiple comparisons minimises any erroneous interpretations of subgroup differences and therefore strengthens our conclusions on the available evidence.

Despite this, the categorisation of interventions within each subgroup could be considered a limitation of the current review. While this was done to directly compare the effects of different subgroups (i.e., acute versus chronic, tetraplegia versus paraplegia, aerobic versus resistance versus FES), it resulted in an unequal number of interventions within each classification and likely underpowered the subgroup comparisons. For example, the lack of a significant difference in the subgroup analysis based on exercise intensity for PPO may be influenced by the

small number of interventions for light- and supramaximal-intensity. Despite reporting some significant subgroup differences across dichotomised studies, these variables were not identified as significant moderator variables in the random-effects meta-regression, meaning these findings should be viewed with caution. It is perhaps more of a limitation of the evidence-base per se, rather than our meta-analysis, in that more RCTs should be conducted to increase the power of these subgroups. Another limitation is that despite our comprehensive search strategy, we may have missed relevant studies as abstracts, theses, and other unpublished work were not included.

#### 4.2. Clinical implications and future directions

Our results support the current guidelines regarding the minimal weekly volume of exercise necessary to improve CRF in the SCI population. However, our pooled analysis indicates subgroup differences for PPO based on certain exercise intervention parameters. To the best of our knowledge, there are no large-scale epidemiological studies investigating the dose-response relationship between physical activity and CRF in this population using sensitive and validated methods to quantify the exposure variable (e.g., free-living physical activity). Such studies have been performed in non-injured individuals [166,167]. To identify the optimal stimulus for beneficial CRF responses in this population, dose-ranging studies, akin to those that are used in the pharmaceutical industry, should be conducted. A recent overview of systematic reviews [168] highlighted the poor reporting in exercise interventions in health and disease and called upon the inclusion of checklists [e.g., the Consensus on Exercise Reporting Template (CERT) [169] or the Template for Intervention Description and Replication (TIDieR) [170]] to improve study quality. This would ultimately lead to a better understanding of the “dose” of exercise as medicine required to optimise CRF outcomes in this population.

Both the primary meta-analysis of RCTs ( $\Delta 2.9$  mL/kg/min) and the pooled meta-analysis ( $\Delta 2.8$  mL/kg/min) reveal that exercise interventions  $>2$  weeks result in an overall increase in  $\dot{V}O_{2\text{peak}}$ , which is roughly equivalent to 1 MET-SCI [metabolic equivalent in SCI (2.7 mL/kg/min)] [55]. An increase in maximal aerobic capacity (an estimate of CRF) by 1 MET (3.5 mL/kg/min) in non-injured individuals is associated with a 13% and 15% reduction in all-cause and cardiovascular-related mortality, respectively [171]. The current review shows that individuals meeting the SCI-specific guidelines for cardiometabolic health [21] can improve  $\dot{V}O_{2\text{peak}}$  to a similar magnitude to the overall pooled effect (approximately 1 MET-SCI), highlighting that these guidelines may offer a reduction in CVD risk, and therefore mortality. Nonetheless, an association between an improvement in CRF and a reduction in mortality is yet to be established specifically in the SCI population and remains an important avenue of research for the future.

### 5. Conclusion

This systematic review with meta-analysis and meta-regression provides an updated, evidence-based summary of exercise interventions lasting  $>2$  weeks and changes in CRF in individuals with SCI. Based on evidence of low-to-moderate certainty, exercise interventions  $>2$  weeks are associated with significant improvements in CRF, and in particular, a clinically meaningful change in  $\dot{V}O_{2\text{peak}}$ . Subgroup comparisons from the pooled meta-analysis identified that upper-body, aerobic exercise and resistance training appear the most effective at improving  $\dot{V}O_{2\text{peak}}$  and PPO. Furthermore, acutely injured, paraplegic individuals, exercising for more than 3 sessions/week will likely experience the greatest change in PPO. Exercise interventions up to 12 weeks are also most likely to lead to improvements in  $\dot{V}O_{2\text{peak}}$ . The

meta-regression revealed that older adults may experience smaller changes in  $\dot{V}O_{2\text{peak}}$  following an exercise intervention. Importantly, there is an ever-growing need for studies to establish a dose-response relationship between exercise and CRF in the SCI population to determine the most optimal form of exercise prescription to reduce the wide-ranging consequences typically associated with SCI. To improve the certainty of evidence in the field moving forward, we call for the development of an SCI-specific reporting template for exercise interventions, as well as encourage researchers to pre-register and/or publish protocol papers for prospective clinical exercise trials. Researchers should also consider whether injury characteristics or participant demographics (e.g., impact of neurological level of injury/severity, motor-sensory classification, autonomic cardiovascular control, age, and sex) influence changes in CRF outcomes with a period of exercise training.

## Supporting information

### **S1 PRIMA Checklist. PRIMA Checklist.**

(DOCX)

### **S1 File. Systematic Review Search Strategy.**

(DOCX)

### **S2 File. Description of Exercise Intensity Classifications as per the American College of Sports Medicine (ACSM) guidelines.**

(DOCX)

### **S3 File. Calculated Correlation Factors.**

(DOCX)

**S4 File. Primary meta-analysis (RCT interventions relative to controls).** (1) Overview of participant demographics and injury characteristics for the pooled RCTs (exercise intervention vs. true-world control or standard of care). (2) Summary of the individual RCTs included in the review. (3) Quality assessment rating for each study using the Cochrane Risk of Bias 2 tool. (4) Forest plots and funnel plots for each CRF outcome.

(DOCX)

**S5 File. Change in CRF outcomes in response to prospective, well-characterised exercise interventions lasting >2 weeks from pre-post and RCT studies (pooled meta-analysis).** (1) Overview of participant demographics and injury characteristics for the pooled exercise interventions from pre-post and RCT studies. (2) Summary statistics of the subgroup analyses. (3) Figure visualising the worldwide coverage of exercise interventions included in the secondary, pooled meta-analysis. (4) Summary of the individual studies included in the review. (5) Forest and funnel plots for change in each CRF outcome for each subgroup comparison (time since injury, neurological level of injury, injury severity, exercise modality, length of intervention, relative exercise intensity, method of exercise intensity prescription, frequency of exercise sessions, and exercise volume). (6) Quality assessment ratings for each pre-post study included in the primary meta-analysis. (7) Risk of bias for each RCT intervention arm included in the primary meta-analysis.

(DOCX)

### **S6 File. Adverse events.**

(DOCX)

### **S7 File. Sensitivity analyses.**

(DOCX)

**S8 File. CPET vs. exercise intervention modality.** (1) Forest plots for each CRF outcome. (DOCX)

**S9 File. Gait-training sub-analysis.** (1) Forest plots for each CRF outcome. (DOCX)

**S10 File. Cross-sectional cohort comparisons summary (secondary meta-analysis).** (1) Overview of participant demographics and injury characteristics for the pooled cohort comparisons. (2) Summary of the individual studies included in the review. (3) Quality assessment rating for each study using the NIH tool for observational cohort and cross-sectional studies. (4) Forest plots and funnel plots for each CRF outcome. (5) Sensitivity analysis on  $\dot{V}O_{2peak}$ . (6) References. (DOCX)

**S11 File. Cross-sectional associations between physical activity and CRF outcomes.** (1) Overview of participant demographics and injury characteristics for the pooled association comparisons. (2) Summary of the individual studies included in the review. (3) Quality assessment rating for each study using the NIH tool for observational cohort and cross-sectional studies. (4) Visualisation of correlation coefficients between physical activity dimensions and CRF outcomes across included studies. (DOCX)

**S12 File. Observational studies (secondary meta-analysis).** (1) Overview of participant demographics and injury characteristics for the pooled observational studies. (2) Summary of the individual studies included in the review. (3) Quality assessment rating for each study using the NIH tool for observational cohort and cross-sectional studies. (4) Forest plots and funnel plots for each CRF outcome. (DOCX)

**S13 File. RCTs intensity comparisons (secondary meta-analysis).** (1) Overview of participant demographics and injury characteristics for the pooled RCTs comparing the effects of different exercise intensities. (2) Summary of the individual RCTs comparing exercise intensity included in the review. (3) Quality assessment rating for each study using the Cochrane Risk of Bias 2 tool. (4) Forest plots and funnel plots for each CRF outcome. (DOCX)

## Acknowledgments

We would like to thank Mr. Sajjad Tavassoly (Faculty of Medicine, UBC, Vancouver, Canada) for his assistance with piloting the initial database search. We would also like to thank Dr. Matthew Querée (Department of Physical Therapy, UBC, Spinal Cord Injury Research Evidence Team, GF Strong Rehabilitation Centre, Vancouver, Canada) for his assistance with the risk of bias assessments. We appreciate the assistance of Mr. Adrian Cheng (ICORD) and Dr. Alex Williams (ICORD), who helped pilot the inclusion/exclusion of articles and supported the use of Photoshop to extract data from figures, respectively. We thank Dr. Sam Weaver (University of Birmingham) for support with the meta-analysis using R. [Fig 3](#) was created using [Biorender.com](#).

## Author Contributions

**Conceptualization:** Matthias Walter, Andrei V. Krassioukov, Tom E. Nightingale.

**Formal analysis:** Daniel D. Hodgkiss, Carole Lunny, Catherine R. Jutzeler.

**Investigation:** Daniel D. Hodgkiss, Gurjeet S. Bhangu, Shin-Yi Chiou, Tom E. Nightingale.

**Project administration:** Daniel D. Hodgkiss, Tom E. Nightingale.

**Software:** Daniel D. Hodgkiss, Carole Lunny, Catherine R. Jutzeler.

**Supervision:** Tom E. Nightingale.

**Visualization:** Daniel D. Hodgkiss, Catherine R. Jutzeler.

**Writing – original draft:** Daniel D. Hodgkiss, Gurjeet S. Bhangu, Carole Lunny, Catherine R. Jutzeler, Shin-Yi Chiou, Matthias Walter, Samuel J. E. Lucas, Andrei V. Krassioukov, Tom E. Nightingale.

**Writing – review & editing:** Daniel D. Hodgkiss, Gurjeet S. Bhangu, Carole Lunny, Catherine R. Jutzeler, Shin-Yi Chiou, Matthias Walter, Samuel J. E. Lucas, Andrei V. Krassioukov, Tom E. Nightingale.

## References

1. Miller LE, Herbert WG. Health and economic benefits of physical activity for patients with spinal cord injury. *Clinicoecon Outcomes Res.* 2016; 8:551–558. <https://doi.org/10.2147/CEOR.S115103> PMID: 27757043
2. Rimmer JH, Schiller W, Chen M-D. Effects of disability-associated low energy expenditure deconditioning syndrome. *Exerc Sport Sci Rev.* 2012; 40:22–29. <https://doi.org/10.1097/JES.0b013e31823b8b82> PMID: 22016146
3. Cragg JJ, Noonan VK, Dvorak M, Krassioukov A, Mancini GBJ, Borisoff JF. Spinal cord injury and type 2 diabetes: results from a population health survey. *Neurology.* 2013; 81:1864–1868. <https://doi.org/10.1212/01.wnl.0000436074.98534.6e> PMID: 24153440
4. Cragg JJ, Noonan VK, Krassioukov A, Borisoff J. Cardiovascular disease and spinal cord injury: results from a national population health survey. *Neurology.* 2013; 81:723–728. <https://doi.org/10.1212/WNL.0b013e3182a1aa68> PMID: 23884034
5. Wu J-C, Chen Y-C, Liu L, Chen T-J, Huang W-C, Cheng H, et al. Increased risk of stroke after spinal cord injury: a nationwide 4-year follow-up cohort study. *Neurology.* 2012; 78:1051–1057. <https://doi.org/10.1212/WNL.0b013e31824e8eaa> PMID: 22377807
6. Ross R, Blair SN, Arena R, Church TS, Després J-P, Franklin BA, et al. Importance of Assessing Cardiorespiratory Fitness in Clinical Practice: A Case for Fitness as a Clinical Vital Sign: A Scientific Statement From the American Heart Association. *Circulation.* 2016; 134:e653–e699. <https://doi.org/10.1161/CIR.0000000000000461> PMID: 27881567
7. Clausen Johan SR, Marott JL, Holtermann A, Gyntelberg F, Jensen MT. Midlife Cardiorespiratory Fitness and the Long-Term Risk of Mortality. *J Am Coll Cardiol.* 2018; 72:987–995.
8. Lee D-C, Sui X, Artero EG, Lee I-M, Church TS, McAuley PA, et al. Long-term effects of changes in cardiorespiratory fitness and body mass index on all-cause and cardiovascular disease mortality in men: the Aerobics Center Longitudinal Study. *Circulation.* 2011; 124:2483–2490. <https://doi.org/10.1161/CIRCULATIONAHA.111.038422> PMID: 22144631
9. Myers J, Prakash M, Froelicher V, Do D, Partington S, Atwood JE. Exercise capacity and mortality among men referred for exercise testing. *N Engl J Med.* 2002; 346:793–801. <https://doi.org/10.1056/NEJMoa011858> PMID: 11893790
10. Laukkanen JA, Kurl S, Salonen R, Rauramaa R, Salonen JT. The predictive value of cardiorespiratory fitness for cardiovascular events in men with various risk profiles: a prospective population-based cohort study. *Eur Heart J.* 2004; 25:1428–1437. <https://doi.org/10.1016/j.ehj.2004.06.013> PMID: 15321701
11. Erikssen G, Liestøl K, Bjørnholt J, Thaulow E, Sandvik L, Erikssen J. Changes in physical fitness and changes in mortality. *Lancet.* 1998; 352:759–762. [https://doi.org/10.1016/S0140-6736\(98\)02268-5](https://doi.org/10.1016/S0140-6736(98)02268-5) PMID: 9737279
12. Lee DC, Sui X, Ortega FB, Kim Y-S, Church TS, Winett RA, et al. Comparisons of leisure-time physical activity and cardiorespiratory fitness as predictors of all-cause mortality in men and women. *Br J Sports Med.* 2011; 45:504–510. <https://doi.org/10.1136/bjism.2009.066209> PMID: 20418526



13. Haisma JA, van der Woude LHV, Stam HJ, Bergen MP, Sluis TAR, Bussmann JBJ. Physical capacity in wheelchair-dependent persons with a spinal cord injury: a critical review of the literature. *Spinal Cord*. 2006; 44:642–652. <https://doi.org/10.1038/sj.sc.3101915> PMID: 16534502
14. Simmons OL, Kressler J, Nash MS. Reference fitness values in the untrained spinal cord injury population. *Arch Phys Med Rehabil*. 2014; 95:2272–2278. <https://doi.org/10.1016/j.apmr.2014.06.015> PMID: 25007709
15. Stofan JR, DiPietro L, Davis D, Kohl HW 3rd, Blair SN. Physical activity patterns associated with cardiorespiratory fitness and reduced mortality: the Aerobics Center Longitudinal Study. *Am J Public Health*. 1998; 88:1807–1813. <https://doi.org/10.2105/ajph.88.12.1807> PMID: 9842378
16. Nightingale TE, Williams S, Thompson D, Bilzon JLJ. Energy balance components in persons with paraplegia: daily variation and appropriate measurement duration. *Int J Behav Nutr Phys Act*. 2017; 14:132. <https://doi.org/10.1186/s12966-017-0590-z> PMID: 28950900
17. van den Berg-Emons RJ, Bussmann JB, Stam HJ. Accelerometry-based activity spectrum in persons with chronic physical conditions. *Arch Phys Med Rehabil*. 2010; 91:1856–1861. <https://doi.org/10.1016/j.apmr.2010.08.018> PMID: 21112426
18. Hicks AL, Martin Ginis KA, Pelletier CA, Ditor DS, Foulon B, Wolfe DL. The effects of exercise training on physical capacity, strength, body composition and functional performance among adults with spinal cord injury: a systematic review. *Spinal Cord*. 2011; 49:1103–1127. <https://doi.org/10.1038/sc.2011.62> PMID: 21647163
19. Valent L, Dallmeijer A, Houdijk H, Talsma E, van der Woude L. The effects of upper body exercise on the physical capacity of people with a spinal cord injury: a systematic review. *Clin Rehabil*. 2007; 21:315–330. <https://doi.org/10.1177/0269215507073385> PMID: 17613572
20. Ginis KAM, Hicks AL, Latimer AE, Warburton DER, Bourne C, Ditor DS, et al. The development of evidence-informed physical activity guidelines for adults with spinal cord injury. *Spinal Cord*. 2011; 49:1088–1096. <https://doi.org/10.1038/sc.2011.63> PMID: 21647164
21. Martin Ginis KA, van der Scheer JW, Latimer-Cheung AE, Barrow A, Bourne C, Carruthers P, et al. Evidence-based scientific exercise guidelines for adults with spinal cord injury: an update and a new guideline. *Spinal Cord*. 2018; 56:308–321. <https://doi.org/10.1038/s41393-017-0017-3> PMID: 29070812
22. Smith B, Kirby N, Skinner B, Wightman L, Lucas R, Foster C. Infographic. Physical activity for disabled adults. *Br J Sports Med*. 2019; 53:335–336. <https://doi.org/10.1136/bjsports-2018-100158> PMID: 30366964
23. Bull FC, Al-Ansari SS, Biddle S, Borodulin K, Buman MP, Cardon G, et al. World Health Organization 2020 guidelines on physical activity and sedentary behaviour. *Br J Sports Med*. 2020; 54:1451–1462. <https://doi.org/10.1136/bjsports-2020-102955> PMID: 33239350
24. Tweedy SM, Beckman EM, Geraghty TJ, Theisen D, Perret C, Harvey LA, et al. Exercise and sports science Australia (ESSA) position statement on exercise and spinal cord injury. *J Sci Med Sport*. 2017; 20:108–115. <https://doi.org/10.1016/j.jsams.2016.02.001> PMID: 27185457
25. Piercy KL, Troiano RP, Ballard RM, Carlson SA, Fulton JE, Galuska DA, et al. The Physical Activity Guidelines for Americans. *JAMA*. 2018; 320:2020–2028. <https://doi.org/10.1001/jama.2018.14854> PMID: 30418471
26. Powell KE, Paluch AE, Blair SN. Physical activity for health: What kind? How much? How intense? On top of what? *Annu Rev Public Health*. 2011; 32:349–365. <https://doi.org/10.1146/annurev-publhealth-031210-101151> PMID: 21128761
27. Tweedy SM, Beckman EM, Connick MJ, Geraghty TJ, Theisen D, Perret C, et al. Correspondence re “Evidence-based scientific exercise guidelines for adults with spinal cord injury: an update and new guideline.” *Spinal Cord*. 2018:406–408. <https://doi.org/10.1038/s41393-017-0052-0> PMID: 29348691
28. Yue T, Wang Y, Liu H, Kong Z, Qi F. Effects of High-Intensity Interval vs. Moderate-Intensity Continuous Training on Cardiac Rehabilitation in Patients With Cardiovascular Disease: A Systematic Review and Meta-Analysis. *Front Cardiovasc Med*. 2022; 9:845225. <https://doi.org/10.3389/fcvm.2022.845225> PMID: 35282360
29. Hannan AL, Hing W, Simas V, Climstein M, Coombes JS, Jayasinghe R, et al. High-intensity interval training versus moderate-intensity continuous training within cardiac rehabilitation: a systematic review and meta-analysis. *Open Access J Sports Med*. 2018; 9:1–17. <https://doi.org/10.2147/OAJSM.S150596> PMID: 29416382
30. Peters J, Abou L, Rice LA, Dandeneau K, Alluri A, Salvador AF, et al. The effectiveness of vigorous training on cardiorespiratory fitness in persons with spinal cord injury: a systematic review and meta-analysis. *Spinal Cord*. 2021; 59:1035–1044. <https://doi.org/10.1038/s41393-021-00669-7> PMID: 34274948

31. Nightingale TE, Metcalfe RS, Vollaard NB, Bilzon JL. Exercise Guidelines to Promote Cardiometabolic Health in Spinal Cord Injured Humans: Time to Raise the Intensity? *Arch Phys Med Rehabil.* 2017; 98:1693–1704. <https://doi.org/10.1016/j.apmr.2016.12.008> PMID: 28089898
32. Astorino TA, Hicks AL, Bilzon JJJ. Viability of high intensity interval training in persons with spinal cord injury—a perspective review. *Spinal Cord.* 2021; 59:3–8. <https://doi.org/10.1038/s41393-020-0492-9> PMID: 32483336
33. Farrow M, Nightingale TE, Maher J, McKay CD, Thompson D, Bilzon JJJ. Effect of Exercise on Cardio-metabolic Risk Factors in Adults With Chronic Spinal Cord Injury: A Systematic Review. *Arch Phys Med Rehabil.* 2020; 101:2177–2205. <https://doi.org/10.1016/j.apmr.2020.04.020> PMID: 32445849
34. Moher D, Liberati A, Tetzlaff J, Altman DG. PRISMA Group. Preferred reporting items for systematic reviews and meta-analyses: the PRISMA statement. *BMJ.* 2009; 339:b2535.
35. van der Scheer JW, Martin Ginis KA, Ditor DS, Goosey-Tolfrey VL, Hicks AL, West CR, et al. Effects of exercise on fitness and health of adults with spinal cord injury: A systematic review. *Neurology.* 2017; 89:736–745. <https://doi.org/10.1212/WNL.0000000000004224> PMID: 28733344
36. van der Scheer JW, Goosey-Tolfrey VL, Valentino SE, Davis GM, Ho CH. Functional electrical stimulation cycling exercise after spinal cord injury: a systematic review of health and fitness-related outcomes. *J Neuroeng Rehabil.* 2021; 18:99.
37. Jackson JL, Kuriyama A, Anton A, Choi A, Fournier J-P, Geier A-K, et al. The Accuracy of Google Translate for Abstracting Data From Non-English-Language Trials for Systematic Reviews. *Ann Intern Med.* 2019; 171:677–679. <https://doi.org/10.7326/M19-0891> PMID: 31357212
38. Lannem AM, Sørensen M, Lidal IB, Hjeltnes N. Perceptions of exercise mastery in persons with complete and incomplete spinal cord injury. *Spinal Cord.* 2010; 48:388–392. <https://doi.org/10.1038/sc.2009.136> PMID: 19823190
39. Bombardier CH, Dyer JR, Burns P, Crane DA, Takahashi MM, Barber J, et al. A tele-health intervention to increase physical fitness in people with spinal cord injury and cardiometabolic disease or risk factors: a pilot randomized controlled trial. *Spinal Cord.* 2021; 59:63–73. <https://doi.org/10.1038/s41393-020-0523-6> PMID: 32694748
40. Hoevenaars D, Holla JFM, Postma K, van der Woude LHV, Janssen TWJ, de Groot S. Associations between meeting exercise guidelines, physical fitness, and health in people with spinal cord injury. *Disabil Rehabil.* 2022:1–8. <https://doi.org/10.1080/09638288.2022.2048910> PMID: 35306932
41. Piira A, Lannem AM, Sørensen M, Glott T, Knutsen R, Jørgensen L, et al. Manually assisted body-weight supported locomotor training does not re-establish walking in non-walking subjects with chronic incomplete spinal cord injury: A randomized clinical trial. *J Rehabil Med.* 2019; 51:113–119. <https://doi.org/10.2340/16501977-2508> PMID: 30483724
42. Farkas GJ, Gorgey AS, Dolbow DR, Berg AS, Gater DR Jr. Energy Expenditure, Cardiorespiratory Fitness, and Body Composition Following Arm Cycling or Functional Electrical Stimulation Exercises in Spinal Cord Injury: A 16-Week Randomized Controlled Trial. *Top Spinal Cord Inj Rehabil.* 2021; 27:121–134. <https://doi.org/10.46292/sci20-00065> PMID: 33814890
43. Dallmeijer AJ, Hopman MT, van der Woude LH. Lipid, lipoprotein, and apolipoprotein profiles in active and sedentary men with tetraplegia. *Arch Phys Med Rehabil.* 1997; 78:1173–1176. [https://doi.org/10.1016/s0003-9993\(97\)90327-0](https://doi.org/10.1016/s0003-9993(97)90327-0) PMID: 9365344
44. Davis GM, Shephard RJ, Leenen FH. Cardiac effects of short term arm crank training in paraplegics: echocardiographic evidence. *Eur J Appl Physiol Occup Physiol.* 1987; 56:90–96. <https://doi.org/10.1007/BF00696382> PMID: 3104034
45. Hansen RK, Samani A, Laessoe U, Handberg A, Mellergaard M, Figlewski K, et al. Rowing exercise increases cardiorespiratory fitness and brachial artery diameter but not traditional cardiometabolic risk factors in spinal cord-injured humans. *Eur J Appl Physiol.* 2023:1–15.
46. Higgins JPT, Sterne JAC, Savovic J, Page MJ, Hróbjartsson A, Boutron I, et al. A revised tool for assessing risk of bias in randomized trials. *Cochrane Database Syst Rev.* 2016; 10:29–31.
47. McGuinness LA, Higgins JPT. Risk-of-bias Visualization (robvis): An R package and Shiny web app for visualizing risk-of-bias assessments. *Res Synth Methods.* 2021; 12:55–61. <https://doi.org/10.1002/jrsm.1411> PMID: 32336025
48. American College of Medicine. ACSM's guidelines for exercise testing and prescription. 9th ed. Lippincott Williams & Wilkins; 2013. Available from: <https://shop.lww.com/ACSM-s-Guidelines-for-Exercise-Testing-and-Prescription/p/9781975150181>.
49. Higgins JPT, Li T, Deeks JJ. Choosing effect measures and computing estimates of effect. *Cochrane Handbook for Systematic Reviews of Interventions.* Wiley; 2019. p. 143–176. <https://doi.org/10.1002/9781119536604.ch6>

50. Hozo SP, Djulbegovic B, Hozo I. Estimating the mean and variance from the median, range, and the size of a sample. *BMC Med Res Methodol*. 2005; 5:13. <https://doi.org/10.1186/1471-2288-5-13> PMID: 15840177
51. Higgins JPT, Thomas J, Chandler J, Cumpston M, Li T, Page MJ, et al. *Cochrane Handbook for Systematic Reviews of Interventions*. John Wiley & Sons; 2019.
52. Viechtbauer W. Conducting Meta-Analyses in R with the metafor Package. *J Stat Softw*. 2010; 36:1–48.
53. Balduzzi S, Rücker G, Schwarzer G. How to perform a meta-analysis with R: a practical tutorial. *Evid Based Ment Health*. 2019; 22:153–160. <https://doi.org/10.1136/ebmental-2019-300117> PMID: 31563865
54. Quintana DS. A Guide for Calculating Study-Level Statistical Power for Meta-Analyses. *Adv Methods Pract Psychol Sci*. 2023; 6:25152459221147260.
55. Collins EG, Gater D, Kiratli J, Butler J, Hanson K, Langbein WE. Energy cost of physical activities in persons with spinal cord injury. *Med Sci Sports Exerc*. 2010; 42:691–700. <https://doi.org/10.1249/MSS.0b013e3181bb902f> PMID: 19952846
56. Hutchinson MJ, Goosey-Tolfrey VL. Rethinking aerobic exercise intensity prescription in adults with spinal cord injury: time to end the use of “moderate to vigorous” intensity? *Spinal Cord*. 2021:1–7.
57. Higgins JPT, Thompson SG. Controlling the risk of spurious findings from meta-regression. *Stat Med*. 2004; 23:1663–1682. <https://doi.org/10.1002/sim.1752> PMID: 15160401
58. Guyatt GH, Oxman AD, Vist GE, Kunz R, Falck-Ytter Y, Alonso-Coello P, et al. GRADE: an emerging consensus on rating quality of evidence and strength of recommendations. *BMJ*. 2008; 336:924–926. <https://doi.org/10.1136/bmj.39489.470347.AD> PMID: 18436948
59. Han D-S, Hsiao M-Y, Wang T-G, Chen S-Y, Yang W-S. Association of serum myokines and aerobic exercise training in patients with spinal cord injury: an observational study. *BMC Neurol*. 2016; 16:142. <https://doi.org/10.1186/s12883-016-0661-9> PMID: 27534935
60. Hoekstra F, van Nunen MPM, Gerrits KHL, Stolwijk-Swüste JM, Crins MHP, Janssen TWJ. Effect of robotic gait training on cardiorespiratory system in incomplete spinal cord injury. *J Rehabil Res Dev*. 2013; 50:1411–1422. <https://doi.org/10.1682/JRRD.2012.10.0186> PMID: 24699976
61. Pollack SF, Axen K, Spielholz N, Levin N, Haas F, Ragnarsson KT. Aerobic training effects of electrically induced lower extremity exercises in spinal cord injured people. *Arch Phys Med Rehabil*. 1989; 70:214–219. PMID: 2784311
62. Barstow TJ, Scremin AM, Mutton DL, Kunkel CF, Cagle TG, Whipp BJ. Changes in gas exchange kinetics with training in patients with spinal cord injury. *Med Sci Sports Exerc*. 1996; 28:1221–1228. <https://doi.org/10.1097/00005768-199610000-00003> PMID: 8897377
63. Gorman PH, Scott W, VanHiel L, Tansey KE, Sweatman WM, Geigle PR. Comparison of peak oxygen consumption response to aquatic and robotic therapy in individuals with chronic motor incomplete spinal cord injury: a randomized controlled trial. *Spinal Cord*. 2019; 57:471–481. <https://doi.org/10.1038/s41393-019-0239-7> PMID: 30659286
64. Heesterbeek PJC, Berkelmans HWA, Thijssen DHJ, van Kuppevelt HJM, Hopman MTE, Duysens J. Increased physical fitness after 4-week training on a new hybrid FES-cycle in persons with spinal cord injury. *Technol Disabil*. 2005; 17:103–110.
65. Mutton DL, Scremin AM, Barstow TJ, Scott MD, Kunkel CF, Cagle TG. Physiologic responses during functional electrical stimulation leg cycling and hybrid exercise in spinal cord injured subjects. *Arch Phys Med Rehabil*. 1997; 78:712–718. [https://doi.org/10.1016/s0003-9993\(97\)90078-2](https://doi.org/10.1016/s0003-9993(97)90078-2) PMID: 9228873
66. Ozturk ED, Lapointe MS, Kim D-I, Hamner JW, Tan CO. Effect of 6-Month Exercise Training on Neurovascular Function in Spinal Cord Injury. *Med Sci Sports Exerc*. 2021; 53:38–46. <https://doi.org/10.1249/MSS.0000000000002452> PMID: 32826631
67. Hooker SP, Scremin AM, Mutton DL, Kunkel CF, Cagle G. Peak and submaximal physiologic responses following electrical stimulation leg cycle ergometer training. *J Rehabil Res Dev*. 1995; 32:361–366. PMID: 8770800
68. Hooker SP, Figoni SF, Rodgers MM, Glaser RM, Mathews T, Suryaprasad AG, et al. Physiologic effects of electrical stimulation leg cycle exercise training in spinal cord injured persons. *Arch Phys Med Rehabil*. 1992; 73:470–476. PMID: 1580776
69. Hasnan N, Engkasan JP, Husain R, Davis GM. High-Intensity Virtual-reality Arm plus FES-leg Interval Training in Individuals with Spinal Cord Injury. *Biomed Tech*. 2013; 58(Suppl 1). <https://doi.org/10.1515/bmt-2013-4028> PMID: 24042615
70. Janssen TWJ, Pringle DD. Effects of modified electrical stimulation-induced leg cycle ergometer training for individuals with spinal cord injury. *J Rehabil Res Dev*. 2008; 45:819–830. <https://doi.org/10.1682/jrrd.2007.09.0153> PMID: 19009468

71. Jeon JY, Hettinga D, Steadward RD, Wheeler GD, Bell G, Harber V. Reduced plasma glucose and leptin after 12 weeks of functional electrical stimulation-rowing exercise training in spinal cord injury patients. *Arch Phys Med Rehabil*. 2010; 91:1957–1959. <https://doi.org/10.1016/j.apmr.2010.08.024> PMID: 21112441
72. Midha M, Schmitt JK, Sclater M. Exercise effect with the wheelchair aerobic fitness trainer on conditioning and metabolic function in disabled persons: a pilot study. *Arch Phys Med Rehabil*. 1999; 80:258–261. [https://doi.org/10.1016/s0003-9993\(99\)90135-1](https://doi.org/10.1016/s0003-9993(99)90135-1) PMID: 10084432
73. Milia R, Roberto S, Marongiu E, Olla S, Sanna I, Angius L, et al. Improvement in hemodynamic responses to metaboreflex activation after one year of training in spinal cord injured humans. *Biomed Res Int*. 2014; 2014:893468. <https://doi.org/10.1155/2014/893468> PMID: 24809060
74. Lavado EL, Cardoso JR, Silva LGA, Dela Bela LF, Atallah AN. Effectiveness of aerobic physical training for treatment of chronic asymptomatic bacteriuria in subjects with spinal cord injury: a randomized controlled trial. *Clin Rehabil*. 2013; 27:142–149. <https://doi.org/10.1177/0269215512450522> PMID: 22837545
75. Brazg G, Fahey M, Holleran CL, Connolly M, Woodward J, Hennessy PW, et al. Effects of Training Intensity on Locomotor Performance in Individuals With Chronic Spinal Cord Injury: A Randomized Crossover Study. *Neurorehabil Neural Repair*. 2017; 31:944–954. <https://doi.org/10.1177/1545968317731538> PMID: 29081250
76. Schleifer G, Solinsky R, Hamner JW, Picard G, Taylor JA. Hybrid Functional Electrical Stimulation Improves Anaerobic Threshold in First Three Years after Spinal Cord Injury. *J Neurotrauma*. 2022; 39:1050–1056. <https://doi.org/10.1089/neu.2021.0459> PMID: 35232233
77. Beillot J, Carré F, Le Claire G, Thoumie P, Perruoin-Verbe B, Cormerais A, et al. Energy consumption of paraplegic locomotion using reciprocating gait orthosis. *Eur J Appl Physiol Occup Physiol*. 1996; 73:376–381. <https://doi.org/10.1007/BF02425502> PMID: 8781872
78. Koch I, Schlegel M, Pirwitz A, Jaschke B, Schlegel K. Objectification of the training effect of sports therapy for wheelchair users. *Int J Rehabil Res*. 1983; 6:439–448.
79. Kooijmans H, Post MWM, Stam HJ, van der Woude LHV, Spijkerman DCM, Snoek GJ, et al. Effectiveness of a Self-Management Intervention to Promote an Active Lifestyle in Persons With Long-Term Spinal Cord Injury: The HABITS Randomized Clinical Trial. *Neurorehabil Neural Repair*. 2017; 31:991–1004. <https://doi.org/10.1177/1545968317736819> PMID: 29256337
80. Ma JK, West CR, Martin Ginis KA. The Effects of a Patient and Provider Co-Developed, Behavioral Physical Activity Intervention on Physical Activity, Psychosocial Predictors, and Fitness in Individuals with Spinal Cord Injury: A Randomized Controlled Trial. *Sports Med*. 2019; 49:1117–1131. <https://doi.org/10.1007/s40279-019-01118-5> PMID: 31119717
81. Nooijen CF, Stam HJ, Sluis T, Valent L, Twisk J, van den Berg-Emons RJ. A behavioral intervention promoting physical activity in people with subacute spinal cord injury: secondary effects on health, social participation and quality of life. *Clin Rehabil*. 2017; 31:772–780. <https://doi.org/10.1177/0269215516657581> PMID: 27378787
82. Froehlich-Grobe K, Lee J, Ochoa C, Lopez A, Sarker E, Driver S, et al. Effectiveness and feasibility of the workout on wheels internet intervention (WOWii) for individuals with spinal cord injury: a randomized controlled trial. *Spinal Cord*. 2022; 60:862–874. <https://doi.org/10.1038/s41393-022-00787-w> PMID: 35474116
83. Bakkum AJT, de Groot S, Stolwijk-Swüste JM, van Kuppevelt DJ, ALLRISC -, van der Woude LHV, et al. Effects of hybrid cycling versus handcycling on wheelchair-specific fitness and physical activity in people with long-term spinal cord injury: a 16-week randomized controlled trial. *Spinal Cord*. 2015; 53:395–401. <https://doi.org/10.1038/sc.2014.237> PMID: 25622729
84. Capodaglio P, Grilli C, Bazzini G. Tolerable exercise intensity in the early rehabilitation of paraplegic patients. A preliminary study. *Spinal Cord*. 1996; 34:684–690. <https://doi.org/10.1038/sc.1996.124> PMID: 8918967
85. Gorgey AS, Lai RE, Khalil RE, Rivers J, Cardozo C, Chen Q, et al. Neuromuscular electrical stimulation resistance training enhances oxygen uptake and ventilatory efficiency independent of mitochondrial complexes after spinal cord injury: a randomized clinical trial. *J Appl Physiol*. 2021; 131:265–276. <https://doi.org/10.1152/jappphysiol.01029.2020> PMID: 33982590
86. Alrashidi AA, Nightingale TE, Currie KD, Hubli M, MacDonald MJ, Hicks AL, et al. Exercise Improves Cardiorespiratory Fitness, but Not Arterial Health, after Spinal Cord Injury: The CHOICES Trial. *J Neurotrauma*. 2021; 38:3020–3029. <https://doi.org/10.1089/neu.2021.0071> PMID: 34314235
87. Berry HR, Perret C, Saunders BA, Kakebeeke TH, Donaldson NDN, Allan DB, et al. Cardiorespiratory and power adaptations to stimulated cycle training in paraplegia. *Med Sci Sports Exerc*. 2008; 40:1573–1580. <https://doi.org/10.1249/MSS.0b013e318176b2f4> PMID: 18685535

88. Duffell LD, Paddison S, Alahmary AF, Donaldson N, Burrige J. The effects of FES cycling combined with virtual reality racing biofeedback on voluntary function after incomplete SCI: a pilot study. *J Neuroeng Rehabil*. 2019; 16:149. <https://doi.org/10.1186/s12984-019-0619-4> PMID: 31771600
89. Durán FS, Lugo L, Ramírez L, Eusse E. Effects of an exercise program on the rehabilitation of patients with spinal cord injury. *Arch Phys Med Rehabil*. 2001; 82:1349–1354. <https://doi.org/10.1053/apmr.2001.26066> PMID: 11588736
90. Gorman PH, Scott W, York H, Theyagaraj M, Price-Miller N, McQuaid J, et al. Robotically assisted treadmill exercise training for improving peak fitness in chronic motor incomplete spinal cord injury: A randomized controlled trial. *J Spinal Cord Med*. 2016; 39:32–44. <https://doi.org/10.1179/2045772314Y.0000000281> PMID: 25520035
91. Gibbons RS, Stock CG, Andrews BJ, Gall A, Shave RE. The effect of FES-rowing training on cardiac structure and function: pilot studies in people with spinal cord injury. *Spinal Cord*. 2016; 54:822–829. <https://doi.org/10.1038/sc.2015.228> PMID: 26754476
92. Vestergaard M, Jensen K, Juul-Kristensen B. Hybrid high-intensity interval training using functional electrical stimulation leg cycling and arm ski ergometer for people with spinal cord injuries: a feasibility study. *Pilot Feasibility Stud*. 2022; 8:43. <https://doi.org/10.1186/s40814-022-00997-2> PMID: 35193705
93. DiCarlo SE. Effect of arm ergometry training on wheelchair propulsion endurance of individuals with quadriplegia. *Phys Ther*. 1988; 68:40–44. <https://doi.org/10.1093/ptj/68.1.40> PMID: 3336618
94. Janssen TWJ, Dallmeijer AJ, Veeger DJHEJ, van der Woude LHV. Normative values and determinants of physical capacity in individuals with spinal cord injury. *J Rehabil Res Dev*. 2002; 39:29–39. PMID: 11930906
95. Latimer AE, Ginis KAM, Craven BC, Hicks AL. The physical activity recall assessment for people with spinal cord injury: validity. *Med Sci Sports Exerc*. 2006; 38:208–216. <https://doi.org/10.1249/01.mss.0000183851.94261.d2> PMID: 16531886
96. Manns PJ, McCubbin JA, Williams DP. Fitness, inflammation, and the metabolic syndrome in men with paraplegia. *Arch Phys Med Rehabil*. 2005; 86:1176–1181. <https://doi.org/10.1016/j.apmr.2004.11.020> PMID: 15954057
97. Martin Ginis KA, Úbeda-Colomer J, Alrashidi AA, Nightingale TE, Au JS, Currie KD, et al. Construct validation of the leisure time physical activity questionnaire for people with SCI (LTPAQ-SCI). *Spinal Cord*. 2021; 59:311–318. <https://doi.org/10.1038/s41393-020-00562-9> PMID: 33040086
98. Nightingale TE, Walhin J-P, Thompson D, Bilzon JL. Biomarkers of cardiometabolic health are associated with body composition characteristics but not physical activity in persons with spinal cord injury. *J Spinal Cord Med*. 2019; 42:328–337. <https://doi.org/10.1080/10790268.2017.1368203> PMID: 28901220
99. Haisma JA, Post MW, van der Woude LH, Stam HJ, Bergen MP, Sluis TA, et al. Functional independence and health-related functional status following spinal cord injury: a prospective study of the association with physical capacity. *J Rehabil Med*. 2008; 40:812–818. <https://doi.org/10.2340/16501977-0258> PMID: 19242617
100. Leving MT, de Groot S, Woldring FAB, Tepper M, Vegter RJK, van der Woude LHV. Motor learning outcomes of handrim wheelchair propulsion during active spinal cord injury rehabilitation in comparison with experienced wheelchair users. *Disabil Rehabil*. 2021; 43:1429–1442. <https://doi.org/10.1080/09638288.2019.1668484> PMID: 31656102
101. Stewart MW, Melton-Rogers SL, Morrison S, Figoni SF. The measurement properties of fitness measures and health status for persons with spinal cord injuries. *Arch Phys Med Rehabil*. 2000; 81:394–400. <https://doi.org/10.1053/mr.2000.4417> PMID: 10768526
102. Dallmeijer AJ, van der Woude LH, Hollander PA, Angenot EL. Physical performance in persons with spinal cord injuries after discharge from rehabilitation. *Med Sci Sports Exerc*. 1999; 31:1111–1117. <https://doi.org/10.1097/00005768-199908000-00006> PMID: 10449012
103. Janssen TW, van Oers CA, Rozendaal EP, Willemsen EM, Hollander AP, van der Woude LH. Changes in physical strain and physical capacity in men with spinal cord injuries. *Med Sci Sports Exerc*. 1996; 28:551–559.
104. Szymczak Ł, Podgórski T, Lewandowski J, Janiak A, Michalak E, Domaszewska K. Physical Fitness and Inflammatory Response to the Training Load of Wheelchair Rugby Players. *Int J Environ Res Public Health*. 2022; 19. <https://doi.org/10.3390/ijerph19042228> PMID: 35206416
105. Steeves JD, Kramer JK, Fawcett JW, Cragg J, Lammertse DP, Blight AR, et al. Extent of spontaneous motor recovery after traumatic cervical sensorimotor complete spinal cord injury. *Spinal Cord*. 2011; 49:257–265. <https://doi.org/10.1038/sc.2010.99> PMID: 20714334

106. Figoni SF, Dolbow DR, Crawford EC, White ML, Pattanaik S. Does aerobic exercise benefit persons with tetraplegia from spinal cord injury? A systematic review. *J Spinal Cord Med*. 2021; 44:690–703. <https://doi.org/10.1080/10790268.2020.1722935> PMID: 32043944
107. de Groot S, Dallmeijer AJ, Kilkens OJ, van Asbeck FW, Nene AV, Angenot EL, et al. Course of gross mechanical efficiency in handrim wheelchair propulsion during rehabilitation of people with spinal cord injury: a prospective cohort study. *Arch Phys Med Rehabil*. 2005; 86:1452–1460. <https://doi.org/10.1016/j.apmr.2004.11.025> PMID: 16003680
108. Sprigle S, Maurer C, Holowka M. Development of valid and reliable measures of postural stability. *J Spinal Cord Med*. 2007; 30:40–49. <https://doi.org/10.1080/10790268.2007.11753913> PMID: 17385269
109. Kouwijzer I, Valent L, Osterthun R, van der Woude L, de Groot S. HandbikeBattle group. Peak power output in handcycling of individuals with a chronic spinal cord injury: predictive modeling, validation and reference values. *Disabil Rehabil*. 2020; 42:400–409.
110. Hjeltnes N, Wallberg-Henriksson H. Improved work capacity but unchanged peak oxygen uptake during primary rehabilitation in tetraplegic patients. *Spinal Cord*. 1998; 36:691–698. <https://doi.org/10.1038/sj.sc.3100687> PMID: 9800273
111. Williams AM, Ma JK, Martin Ginis KA, West CR. Effects of a Tailored Physical Activity Intervention on Cardiovascular Structure and Function in Individuals With Spinal Cord Injury. *Neurorehabil Neural Repair*. 2021; 35:692–703. <https://doi.org/10.1177/15459683211017504> PMID: 34027716
112. Cruz S, Blauwet CA. Implications of altered autonomic control on sports performance in athletes with spinal cord injury. *Auton Neurosci*. 2018; 209:100–104. <https://doi.org/10.1016/j.autneu.2017.03.006> PMID: 28457670
113. West CR, Gee CM, Voss C, Hubli M, Currie KD, Schmid J, et al. Cardiovascular control, autonomic function, and elite endurance performance in spinal cord injury. *Scand J Med Sci Sports*. 2015; 25:476–485. <https://doi.org/10.1111/sms.12308> PMID: 25175825
114. West CR, Campbell IG, Goosey-Tolfrey VL, Mason BS, Romer LM. Effects of abdominal binding on field-based exercise responses in Paralympic athletes with cervical spinal cord injury. *J Sci Med Sport*. 2014; 17:351–355. <https://doi.org/10.1016/j.jsams.2013.06.001> PMID: 23880254
115. Pitetti KH, Barrett PJ, Campbell KD, Malzahn DE. The effect of lower body positive pressure on the exercise capacity of individuals with spinal cord injury. *Med Sci Sports Exerc*. 1994; 26:463–468. PMID: 8201903
116. Nieshoff EC, Birk TJ, Birk CA, Hinderer SR, Yavuzer G. Double-blinded, placebo-controlled trial of midodrine for exercise performance enhancement in tetraplegia: a pilot study. *J Spinal Cord Med*. 2004; 27:219–225. <https://doi.org/10.1080/10790268.2004.11753752> PMID: 15478524
117. Nightingale TE, Walter M, Williams AM, Lam T, Krassioukov AV. Ergogenic effects of an epidural neuroprosthesis in one individual with spinal cord injury. *Neurology*. 2019; 92:338–340. <https://doi.org/10.1212/WNL.0000000000006923> PMID: 30635485
118. Laskin JJ, Waheed Z, Thorogood NP, Nightingale TE, Noonan VK. Spinal Cord Stimulation Research in the Restoration of Motor, Sensory, and Autonomic Function for Individuals Living With Spinal Cord Injuries: A Scoping Review. *Arch Phys Med Rehabil*. 2022. <https://doi.org/10.1016/j.apmr.2022.01.161> PMID: 35202581
119. Berger MJ, Kimpinski K, Currie KD, Nouraei H, Sadeghi M, Krassioukov AV. Multi-Domain Assessment of Autonomic Function in Spinal Cord Injury Using a Modified Autonomic Reflex Screen. *J Neurotrauma*. 2017; 34:2624–2633. <https://doi.org/10.1089/neu.2016.4888> PMID: 28537464
120. Wang S, Wecht JM, Legg Ditterline B, Ugiliweneza B, Maher MT, Lombard AT, et al. Heart rate and blood pressure response improve the prediction of orthostatic cardiovascular dysregulation in persons with chronic spinal cord injury. *Physiol Rep*. 2020; 8:e14617. <https://doi.org/10.14814/phy2.14617> PMID: 33080121
121. DiPiro ND, Embry AE, Fritz SL, Middleton A, Krause JS, Gregory CM. Effects of aerobic exercise training on fitness and walking-related outcomes in ambulatory individuals with chronic incomplete spinal cord injury. *Spinal Cord*. 2016; 54:675–681. <https://doi.org/10.1038/sc.2015.212> PMID: 26666508
122. Fleg JL, Morrell CH, Bos AG, Brant LJ, Talbot LA, Wright JG, et al. Accelerated longitudinal decline of aerobic capacity in healthy older adults. *Circulation*. 2005; 112:674–682. <https://doi.org/10.1161/CIRCULATIONAHA.105.545459> PMID: 16043637
123. Groah SL, Charlifue S, Tate D, Jensen MP, Molton IR, Forchheimer M, et al. Spinal cord injury and aging: challenges and recommendations for future research. *Am J Phys Med Rehabil*. 2012; 91:80–93. <https://doi.org/10.1097/PHM.0b013e31821f70bc> PMID: 21681060
124. Hinrichs T, Lay V, Arnet U, Eriks-Hoogland I, Koch HG, Rantanen T, et al. Age-related variation in mobility independence among wheelchair users with spinal cord injury: A cross-sectional study. *J*

- Spinal Cord Med. 2016; 39:180–189. <https://doi.org/10.1179/2045772315Y.0000000008> PMID: 25832471
125. Jørgensen S, Martin Ginis KA, Lexell J. Leisure time physical activity among older adults with long-term spinal cord injury. *Spinal Cord*. 2017; 55:848–856. <https://doi.org/10.1038/sc.2017.26> PMID: 28322241
  126. Chiou SY, Clarke E, Lam C, Harvey T, Nightingale TE. Effects of Arm-Crank Exercise on Fitness and Health in Adults With Chronic Spinal Cord Injury: A Systematic Review. *Front Physiol*. 2022; 13:831372. <https://doi.org/10.3389/fphys.2022.831372> PMID: 35392374
  127. Bochkezanian V, Raymond J, de Oliveira CQ, Davis GM. Can combined aerobic and muscle strength training improve aerobic fitness, muscle strength, function and quality of life in people with spinal cord injury? A systematic review. *Spinal Cord*. 2015; 53:418–431. <https://doi.org/10.1038/sc.2015.48> PMID: 25823799
  128. Brurok B, Helgerud J, Karlsen T, Leivseth G, Hoff J. Effect of aerobic high-intensity hybrid training on stroke volume and peak oxygen consumption in men with spinal cord injury. *Am J Phys Med Rehabil*. 2011; 90:407–414. <https://doi.org/10.1097/PHM.0b013e31820f960f> PMID: 21389841
  129. Gant KL, Nagle KG, Cowan RE, Field-Fote EC, Nash MS, Kressler J, et al. Body System Effects of a Multi-Modal Training Program Targeting Chronic, Motor Complete Thoracic Spinal Cord Injury. *J Neurotrauma*. 2018; 35:411–423. <https://doi.org/10.1089/neu.2017.5105> PMID: 28795657
  130. Lotter JK, Henderson CE, Plawecki A, Holthus ME, Lucas EH, Ardestani MM, et al. Task-Specific Versus Impairment-Based Training on Locomotor Performance in Individuals With Chronic Spinal Cord Injury: A Randomized Crossover Study. *Neurorehabil Neural Repair*. 2020; 34:627–639. <https://doi.org/10.1177/1545968320927384> PMID: 32476619
  131. Jacobs PL, Nash MS, Rusinowski JW. Circuit training provides cardiorespiratory and strength benefits in persons with paraplegia. *Med Sci Sports Exerc*. 2001; 33:711–717. <https://doi.org/10.1097/00005768-200105000-00005> PMID: 11323537
  132. Sweet SN, Martin Ginis KA, Tomasone JR. Investigating intermediary variables in the physical activity and quality of life relationship in persons with spinal cord injury. *Health Psychol*. 2013; 32:877–885. <https://doi.org/10.1037/a0032383> PMID: 23566180
  133. Eitvikipart AC, de Oliveira CQ, Arora M, Middleton J, Davis GM. Overview of Systematic Reviews of Aerobic Fitness and Muscle Strength Training after Spinal Cord Injury. *J Neurotrauma*. 2019; 36:2943–2963. <https://doi.org/10.1089/neu.2018.6310> PMID: 30982398
  134. Martin Ginis KA, van der Scheer JW, Latimer-Cheung AE, Barrow A, Bourne C, Carruthers P, et al. Response to correspondence from the ESSA Statement authors. *Spinal Cord*. 2018:409–411. <https://doi.org/10.1038/s41393-017-0051-1> PMID: 29348688
  135. Astorino TA, Thum JS. Within-session responses to high-intensity interval training in spinal cord injury. *Disabil Rehabil*. 2018; 40:444–449. <https://doi.org/10.1080/09638288.2016.1260648> PMID: 27930890
  136. Tordi N, Dugue B, Klupzinski D, Rasseneur L, Rouillon JD, Lonsdorfer J. Interval training program on a wheelchair ergometer for paraplegic subjects. *Spinal Cord*. 2001; 39:532–537. <https://doi.org/10.1038/sj.sc.3101206> PMID: 11641797
  137. de Groot PCE, Hjeltnes N, Heijboer AC, Stal W, Birkeland K. Effect of training intensity on physical capacity, lipid profile and insulin sensitivity in early rehabilitation of spinal cord injured individuals. *Spinal Cord*. 2003; 41:673–679. <https://doi.org/10.1038/sj.sc.3101534> PMID: 14639446
  138. Gauthier C, Brosseau R, Hicks AL, Gagnon DH. Feasibility, Safety, and Preliminary Effectiveness of a Home-Based Self-Managed High-Intensity Interval Training Program Offered to Long-Term Manual Wheelchair Users. *Rehabil Res Pract*. 2018; 2018:8209360. <https://doi.org/10.1155/2018/8209360> PMID: 29888007
  139. McLeod JC, Diana H, Hicks AL. Sprint interval training versus moderate-intensity continuous training during inpatient rehabilitation after spinal cord injury: a randomized trial. *Spinal Cord*. 2020; 58:106–115. <https://doi.org/10.1038/s41393-019-0345-6> PMID: 31462757
  140. Graham K, Yaras-Fisher C, Li J, McCully KM, Rimmer JH, Powell D, et al. Effects of High-Intensity Interval Training Versus Moderate-Intensity Training on Cardiometabolic Health Markers in Individuals With Spinal Cord Injury: A Pilot Study. *Top Spinal Cord Inj Rehabil*. 2019; 25:248–259. <https://doi.org/10.1310/sci19-00042> PMID: 31548792
  141. McMillan DW, Astorino TA, Correa MA, Nash MS, Gater DR. Virtual Strategies for the Broad Delivery of High Intensity Exercise in Persons With Spinal Cord Injury: Ongoing Studies and Considerations for Implementation. *Front Sports Act Living*. 2021; 3:703816. <https://doi.org/10.3389/fspor.2021.703816> PMID: 34423292

142. Maher JL, Whitmarsh C, Smith P, Taylor H, Fard A, Bilzon J. Feasibility study of high-intensity interval training to reduce cardiometabolic disease risks in individuals with acute spinal cord injury. *BMJ Open*. 2023; 13:e068507. <https://doi.org/10.1136/bmjopen-2022-068507> PMID: 36737096
143. Claydon VE, Hol AT, Eng JJ, Krassioukov AV. Cardiovascular responses and postexercise hypotension after arm cycling exercise in subjects with spinal cord injury. *Arch Phys Med Rehabil*. 2006; 87:1106–1114. <https://doi.org/10.1016/j.apmr.2006.05.011> PMID: 16876557
144. Griggs KE, Leicht CA, Price MJ, Goosey-Tolfrey VL. Thermoregulation during intermittent exercise in athletes with a spinal-cord injury. *Int J Sports Physiol Perform*. 2015; 10:469–475. <https://doi.org/10.1123/ijspp.2014-0361> PMID: 25365654
145. Weston KS, Wisløff U, Coombes JS. High-intensity interval training in patients with lifestyle-induced cardiometabolic disease: a systematic review and meta-analysis. *Br J Sports Med*. 2014; 48:1227–1234. <https://doi.org/10.1136/bjsports-2013-092576> PMID: 24144531
146. Valentino SE, Hutchinson MJ, Goosey-Tolfrey VL, MacDonald MJ. Effects of Perceptually Regulated Exercise Training on Cardiorespiratory Fitness and Peak Power Output in Adults With Spinal Cord Injury: A Systematic Review and Meta-analysis. *Arch Phys Med Rehabil*. 2022. <https://doi.org/10.1016/j.apmr.2022.03.008> PMID: 35398049
147. Hutchinson MJ, Kouwizjer I, de Groot S, Goosey-Tolfrey VL. Comparison of two Borg exertion scales for monitoring exercise intensity in able-bodied participants, and those with paraplegia and tetraplegia. *Spinal Cord*. 2021; 59:1162–1169. <https://doi.org/10.1038/s41393-021-00642-4> PMID: 34040150
148. van der Scheer JW, Hutchinson MJ, Paulson T, Martin Ginis KA, Goosey-Tolfrey VL. Reliability and Validity of Subjective Measures of Aerobic Intensity in Adults With Spinal Cord Injury: A Systematic Review. *PM R*. 2018; 10:194–207. <https://doi.org/10.1016/j.pmrj.2017.08.440> PMID: 28867664
149. Cowley KC. A new conceptual framework for the integrated neural control of locomotor and sympathetic function: implications for exercise after spinal cord injury. *Appl Physiol Nutr Metab*. 2018; 43:1140–1150. <https://doi.org/10.1139/apnm-2018-0310> PMID: 30071179
150. Jamnick NA, Pettitt RW, Granata C, Pyne DB, Bishop DJ. An Examination and Critique of Current Methods to Determine Exercise Intensity. *Sports Med*. 2020; 50:1729–1756. <https://doi.org/10.1007/s40279-020-01322-8> PMID: 32729096
151. Meyler S, Bottoms L, Wellsted D, Muniz-Pumares D. Variability in exercise tolerance and physiological responses to exercise prescribed relative to physiological thresholds and to maximum oxygen uptake. *Exp Physiol*. 2023; 108:581–594. <https://doi.org/10.1113/EP090878> PMID: 36710454
152. Anselmi F, Cavigli L, Pagliaro A, Valente S, Valentini F, Cameli M, et al. The importance of ventilatory thresholds to define aerobic exercise intensity in cardiac patients and healthy subjects. *Scand J Med Sci Sports*. 2021; 31:1796–1808. <https://doi.org/10.1111/sms.14007> PMID: 34170582
153. Au JS, Sithamparapillai A, Currie KD, Krassioukov AV, MacDonald MJ, Hicks AL. Assessing Ventilatory Threshold in Individuals With Motor-Complete Spinal Cord Injury. *Arch Phys Med Rehabil*. 2018; 99:1991–1997. <https://doi.org/10.1016/j.apmr.2018.05.015> PMID: 29920232
154. Kouwizjer I, Cowan RE, Maher JL, Groot FP, Riedstra F, Valent LJM, et al. Interrater and intrarater reliability of ventilatory thresholds determined in individuals with spinal cord injury. *Spinal Cord*. 2019; 57:669–678. <https://doi.org/10.1038/s41393-019-0262-8> PMID: 30820032
155. Tjønnå AE, Leinan IM, Bartnes AT, Jenssen BM, Gibala MJ, Winett RA, et al. Low- and high-volume of intensive endurance training significantly improves maximal oxygen uptake after 10-weeks of training in healthy men. *PLoS ONE*. 2013; 8:e65382. <https://doi.org/10.1371/journal.pone.0065382> PMID: 23734250
156. Stensvold D, Viken H, Steinshamn SL, Dalen H, Støylen A, Loennechen JP, et al. Effect of exercise training for five years on all cause mortality in older adults—the Generation 100 study: randomised controlled trial. *BMJ*. 2020; 371:m3485. <https://doi.org/10.1136/bmj.m3485> PMID: 33028588
157. Church TS, Earnest CP, Skinner JS, Blair SN. Effects of different doses of physical activity on cardiorespiratory fitness among sedentary, overweight or obese postmenopausal women with elevated blood pressure: a randomized controlled trial. *JAMA*. 2007; 297:2081–2091. <https://doi.org/10.1001/jama.297.19.2081> PMID: 17507344
158. Foulds HJA, Bredin SSD, Charlesworth SA, Ivey AC, Warburton DER. Exercise volume and intensity: a dose-response relationship with health benefits. *Eur J Appl Physiol*. 2014; 114:1563–1571. <https://doi.org/10.1007/s00421-014-2887-9> PMID: 24770699
159. Alrashidi AA, Nightingale TE, Bhangu GS, Bissonnette-Blais V, Krassioukov AV. Post-processing of peak oxygen uptake data obtained during cardiopulmonary exercise testing in individuals with spinal cord injury: A scoping review and analysis of different post-processing strategies. *Arch Phys Med Rehabil*. 2022. <https://doi.org/10.1016/j.apmr.2022.11.015> PMID: 36584803
160. Phillips BE, Kelly BM, Lilja M, Ponce-González JG, Brogan RJ, Morris DL, et al. A Practical and Time-Efficient High-Intensity Interval Training Program Modifies Cardio-Metabolic Risk Factors in Adults



- with Risk Factors for Type II Diabetes. *Front Endocrinol.* 2017; 8:229. <https://doi.org/10.3389/fendo.2017.00229> PMID: 28943861
161. Katzelnick CG, Weir JP, Jones A, Galea M, Dyson-Hudson TA, Kirshblum SC, et al. Blood Pressure Instability in Persons With SCI: Evidence From a 30-Day Home Monitoring Observation. *Am J Hypertens.* 2019; 32:938–944. <https://doi.org/10.1093/ajh/hpz089> PMID: 31125393
  162. Nightingale TE, Eginyan G, Balthazaar SJJ, Williams AMM, Lam T, Krassioukov AV. Accidental boosting in an individual with tetraplegia - considerations for the interpretation of cardiopulmonary exercise testing. *J Spinal Cord Med.* 2021:1–6.
  163. Martin Ginis KA, Phang SH, Latimer AE, Arbour-Nicitopoulos KP. Reliability and validity tests of the leisure time physical activity questionnaire for people with spinal cord injury. *Arch Phys Med Rehabil.* 2012; 93:677–682. <https://doi.org/10.1016/j.apmr.2011.11.005> PMID: 22336103
  164. Ginis KAM, Latimer AE, Hicks AL, Craven BC. Development and evaluation of an activity measure for people with spinal cord injury. *Med Sci Sports Exerc.* 2005; 37:1099–1111. <https://doi.org/10.1249/01.mss.0000170127.54394.eb> PMID: 16015125
  165. de Groot S, van der Woude LHV, Niezen A, Smit CAJ, Post MWM. Evaluation of the physical activity scale for individuals with physical disabilities in people with spinal cord injury. *Spinal Cord.* 2010; 48:542–547. <https://doi.org/10.1038/sc.2009.178> PMID: 20010909
  166. Healy GN, Wijndaele K, Dunstan DW, Shaw JE, Salmon J, Zimmet PZ, et al. Objectively measured sedentary time, physical activity, and metabolic risk: the Australian Diabetes, Obesity and Lifestyle Study (AusDiab). *Diabetes Care.* 2008; 31:369–371. <https://doi.org/10.2337/dc07-1795> PMID: 18000181
  167. O'Donovan G, Hillsdon M, Ukoumunne OC, Stamatakis E, Hamer M. Objectively measured physical activity, cardiorespiratory fitness and cardiometabolic risk factors in the Health Survey for England. *Prev Med.* 2013; 57:201–205. <https://doi.org/10.1016/j.ypmed.2013.05.022> PMID: 23732244
  168. Hansford HJ, Wewege MA, Cashin AG, Hagstrom AD, Clifford BK, McAuley JH, et al. If exercise is medicine, why don't we know the dose? An overview of systematic reviews assessing reporting quality of exercise interventions in health and disease. *Br J Sports Med.* 2022; 56:692–700. <https://doi.org/10.1136/bjsports-2021-104977> PMID: 35168956
  169. Slade SC, Dionne CE, Underwood M, Buchbinder R. Consensus on Exercise Reporting Template (CERT): Explanation and Elaboration Statement. *Br J Sports Med.* 2016; 50:1428–1437. <https://doi.org/10.1136/bjsports-2016-096651> PMID: 27707738
  170. Hoffmann TC, Glasziou PP, Boutron I, Milne R, Perera R, Moher D, et al. Better reporting of interventions: template for intervention description and replication (TIDieR) checklist and guide. *BMJ.* 2014; 348:g1687. <https://doi.org/10.1136/bmj.g1687> PMID: 24609605
  171. Kodama S, Saito K, Tanaka S, Maki M, Yachi Y, Asumi M, et al. Cardiorespiratory fitness as a quantitative predictor of all-cause mortality and cardiovascular events in healthy men and women: a meta-analysis. *JAMA.* 2009; 301:2024–2035. <https://doi.org/10.1001/jama.2009.681> PMID: 19454641