

Effects of charitable versus monetary incentives on the acceptance of and adherence to a pedometer-based health intervention: study protocol and baseline characteristics of a cluster-randomized controlled trial

Journal Article**Author(s):**

[Kowatsch, Tobias](#) ; Kramer, Jan-Niklas; Kehr, Flavius; Wahle, Fabian; Elser, Niklas; [Fleisch, Elgar](#) 

Publication date:

2016

Permanent link:

<https://doi.org/10.3929/ethz-a-010734176>

Rights / license:

[Creative Commons Attribution 2.0 Generic](#)

Originally published in:

JMIR Research Protocols 5(3), <https://doi.org/10.2196/resprot.6089>

Protocol

Effects of Charitable Versus Monetary Incentives on the Acceptance of and Adherence to a Pedometer-Based Health Intervention: Study Protocol and Baseline Characteristics of a Cluster-Randomized Controlled Trial

Tobias Kowatsch¹, MSc; Jan-Niklas Kramer¹, MSc; Flavius Kehr¹, PhD; Fabian Wahle², MSc; Niklas Elser³, MA; Elgar Fleisch², PhD

¹Institute of Technology Management (ITEM), University of St Gallen, St. Gallen, Switzerland

²Department of Management, Technology and Economics (MTEC), ETH Zurich, Zurich, Switzerland

³CSS Insurance, Lucerne, Switzerland

Corresponding Author:

Tobias Kowatsch, MSc
Institute of Technology Management (ITEM)
University of St Gallen
Dufourstrasse 40a
St. Gallen, 9000
Switzerland
Phone: 41 71224 ext 7244
Fax: 41 712247301
Email: tobias.kowatsch@unisg.ch

Abstract

Background: Research has so far benefited from the use of pedometers in physical activity interventions. However, when public health institutions (eg, insurance companies) implement pedometer-based interventions in practice, people may refrain from participating due to privacy concerns. This might greatly limit the applicability of such interventions. Financial incentives have been successfully used to influence both health behavior and privacy concerns, and may thus have a beneficial effect on the acceptance of pedometer-based interventions.

Objective: This paper presents the design and baseline characteristics of a cluster-randomized controlled trial that seeks to examine the effect of financial incentives on the acceptance of and adherence to a pedometer-based physical activity intervention offered by a health insurance company.

Methods: More than 18,000 customers of a large Swiss health insurance company were allocated to a financial incentive, a charitable incentive, or a control group and invited to participate in a health prevention program. Participants used a pedometer to track their daily physical activity over the course of 6 months. A Web-based questionnaire was administered at the beginning and at the end of the intervention and additional data was provided by the insurance company. The primary outcome of the study will be the participation rate, secondary outcomes will be adherence to the prevention program, physical activity, and health status of the participants among others.

Results: Baseline characteristics indicate that residence of participants, baseline physical activity, and subjective health should be used as covariates in the statistical analysis of the secondary outcomes of the study.

Conclusions: This is the first study in western cultures testing the effectiveness of financial incentives with regard to a pedometer-based health intervention offered by a large health insurer to their customers. Given that the incentives prove to be effective, this study provides the basis for powerful health prevention programs of public health institutions that are easy to implement and can reach large numbers of people in need.

(*JMIR Res Protoc* 2016;5(3):e181) doi:[10.2196/resprot.6089](https://doi.org/10.2196/resprot.6089)

KEYWORDS

physical activity; self-tracking; adherence; acceptance; pedometer; incentives; digital health intervention; cluster-randomized controlled trial

Introduction

In 2012, noncommunicable diseases (NCD) such as cardiovascular diseases, cancers, respiratory diseases, and diabetes were responsible for 68% of deaths worldwide [1]. Physical activity is known to reduce the risk of various NCDs, including cardiovascular disease, obesity, cancer, diabetes [2,3], as well as of mental illness such as depression [4]. However, it seems increasingly difficult to establish a daily activity routine considering the modern sedentary lifestyle and additional personal (eg, motivation), social (eg, lack of social support), and environmental (eg, time or weather) barriers [5,6]. Indeed, when people's daily activity is assessed empirically the majority of participants fail to reach activity goals associated with a health promoting lifestyle [7].

The emerging trend of self-tracking [8] and the public interest in self-tracking tools [9-11], offer great potential for providers of disease prevention programs to overcome the barriers to adopting active lifestyles. The health-related benefits of self-tracking tools can be explained by their support of self-regulating processes. For example, a pedometer provides real-time information regarding the number of steps walked per day. By doing so, the pedometer enables its user to monitor and evaluate his or her daily activity, and thus directly supports the user's self-regulating subfunctions [12]. According to the latter, self-regulation mediates external influences and provides the basis for purposeful action and self-directed change [12]. For example, if one is informed about insufficient physical activity by a pedometer, he or she may decide to go for a walk despite bad weather or to plan the rest of the day in order to reach self-set or given physical activity goals. Consequently, a pedometer may help its user to overcome the abovementioned barriers. A systematic review [13] and a meta-analysis [14] demonstrated the benefits of using pedometers to promote physical activity. Likewise, a metaregression of physical activity interventions found strategies supporting self-regulation to be more effective than other behavioral change strategies [15].

With health care costs being on the rise in Switzerland and other countries [16], health insurance companies are increasingly interested in the potential of pedometer-based physical activity interventions. However, privacy concerns may arise in a health insurance context as pedometers commonly measure very sensitive personal and health-related data besides step counts, such as heart rates, calories, location, and sleep. Privacy concerns seem to almost naturally accompany digitalization in various fields, because the benefits of digitalization often rely on the detection of patterns and correlations in different sources of personal information [17]. Research has addressed privacy concerns in different contexts for example in mobile apps [18,19], location-based services (eg, Google Maps) [20,21], driving behavior [22] or e-commerce transactions [23]. Lack of willingness to disclose personal data has also been identified as one of the main barriers for the digitalization of health care [24]. Privacy concerns have been shown to predict attitudes and

behavioral intentions toward health information technology and electronic health care services [25-27]. In a recent study of 333 users of health care wearable devices [27], perceived privacy risks significantly predicted the adoption intention of wearable technology. On the other hand, a large public poll (N=995) illustrates that although 81% of health insurance customers indicated privacy concerns, a substantial proportion (32%) would still be willing to share personal health-related data with their insurance company [11]. These numbers may reflect a phenomenon researchers have titled the privacy paradox [28], namely that people do provide personal data despite expressing concerns regarding their privacy. Research has provided evidence for the privacy paradox for different kinds of information as well as different contexts, such as e-commerce [29] and Web-based shopping [30], finance services [28], and social networks [31]. Norberg and colleagues [28] demonstrated, for example, that in different market-research scenarios involving banks and pharmaceutical companies, participants disclosed significantly more pieces of personal information than they initially intended to disclose. Summarizing the outlined reasoning, it is unclear whether people are willing to participate in a pedometer-based physical activity intervention offered by a health insurance company. A pedometer-based intervention may give rise to privacy concerns, however research indicates that people sometimes do disclose personal information despite being concerned about privacy.

Two different streams of research suggest favorable effects of incentives (eg, financial rewards) when addressing the problem outlined above. First, financial incentives have proven to be beneficial in the context of health behavior interventions. Financial incentive schemes have been effectively used to tackle obesity [32], for smoking cessation [33-35], to increase physical activity [35-37], to promote vaccination [34], and to change many more health-related behaviors [38]. Within physical activity interventions, financial incentives have been shown to increase both performance of participants [36] as well as adherence to exercise sessions [39]. Effects of financial incentives on physical activity have also been assessed for pedometer-based interventions [40-43]. Of those studies, all but one [43] revealed positive effects of financial incentives either on step goal achievement [40,41] or weight loss [42]. However, the effect of financial incentives on performance may only reflect a short-term effect [39] or dissipate as soon as the incentive is withdrawn [44].

Recent research [45] has also considered the effect of charitable incentives as a variation of mere monetary incentives in a pedometer-based physical activity intervention. In contrast to mere monetary incentives, charitable incentives offer the opportunity to donate a specific amount of the received money to a charitable organization. Charitable incentives may thus lead to a sense of moral satisfaction [46] and have so far been typically applied in a marketing context to motivate purchase behavior [47]. However, they have yet to be evaluated in the domain of health behavior and physical activity. In order to

contribute to research in this area, we decided to consider financial and charitable incentives in the present study.

Second, rooting in the view of privacy as a commodity [48], most approaches explaining privacy disclosure behavior involve the concept of a privacy calculus (ie, weighting the costs and benefits of sharing personal information [23,24,49]). Specifically, sharing personal health data can be perceived as unfair, if no compensating benefit is provided [49]. Consequently, researchers have tried to augment the benefits of information disclosure by providing financial incentives among others in exchange for personal information [20,48,50-52]. For example, participants in a quasiexperimental setup were more willing to disclose personal information on a website for stock trading when they were offered financial gains [50]. Additionally, two-thirds of participants of a large public survey (N=1100) stated that they expect financial compensation in exchange for providing personal health-related data [53]. Thus, financial incentives can be used to increase the perceived benefits of sharing health-related information.

In conclusion, we assume the benefits of financial incentives to be 2-fold within a physical activity intervention offered by a health insurance company: first, a financial incentive may act as a benefit in the privacy calculus of potential intervention participants, compensating for possible privacy concerns. This

effect should be reflected in higher participation rates for experimental groups (EG) in which a financial incentive is provided. Second, in line with previous research, financial incentives may have motivational effects and affect the treatment adherence of participants. Therefore, this study protocol describes the design and methodology in order to examine the effects of the two different incentives on the acceptance of and adherence to a pedometer-based health intervention (PHI). Demographics and baseline characteristics of study participants are presented in the results section. Subsequently, strengths and limitations of the study design are discussed.

Methods

Experimental Groups

Over the course of the PHI, participants had to achieve a fixed level of physical activity each month that was tracked using a commercial pedometer device or app that automatically counts the number of steps when walking. In order for the PHI to be effective, 150 minutes of moderate physical activity are recommended [54-56], which on average translates to a goal of 10,000 steps per day [7,57,58]. Upon achieving that goal, participants received a monthly incentive depending on the EG they were assigned to. [Textbox 1](#) shows descriptions of the groups.

Textbox 1. Experimental group descriptions.

Financial incentive (EG1)

- In this condition, participants were entitled to a \$10 reward each month they reached an average of 10,000 steps per day or more. Participants achieving more than 7500 steps per day were granted \$5 in order to prevent frustration [7]. The minimum recommendation for daily physical activity is approximately 7500 steps per day [57,58].

Charitable incentive (EG2)

- Here, participants received the same rewards as in the financial incentive condition. However, participants had to decide whether a certain proportion of the money should be donated to a charitable organization chosen from a predefined list (proportions varied from 0% to 100% in steps of 5% with 50% being the default).

Control group (CG/EG1)

- Participants of the control group received no incentives over the first 3 months of the PHI. Due to the practical setting of our study, ethical consent and fair treatment of all participants is of highest relevance. Participants in the control group were therefore entitled to a \$20 reward each month they averaged over 10,000 steps per day and a \$10 reward each month they averaged over 7500 steps per day over the fourth to sixth month of the intervention. To avoid anticipatory effects on the participation rate, participants in the control group were not informed of the opportunity to receive financial rewards during the second half of the PHI.

Thus, all participants had the chance to earn a maximum of \$60 that is paid at the end of the PHI.

Participant Acquisition and Sample

Customers of a large Swiss health insurance company that met the following requirements were eligible for participation: they had to be at least 18 years old, be registered in a complementary insurance program, accept the participation conditions and privacy terms, and declared to be free of any medical condition that prohibits physical activity. Absence of medical conditions was required in order to avoid potential negative effects on subject's health due to increased daily activity. In case of uncertainty regarding the health-related eligibility for participation the consultation of a physician was required. Privacy terms essentially stated that only the number of steps will be forwarded to the insurance company for bonus

calculation and that data will be analyzed by researchers of the University St. Gallen and ETH Zurich for scientific purposes.

To avoid spill-over effects between the different incentive strategies [45], potential participants were assigned to the different groups based on their canton of residence and invitations were sent out after the assignment was complete. As at the beginning of the program, the control group (CG) appeared to be the least attractive condition we wanted to contact a different number of potential participants for the 3 groups according to a proportion of 2 (EG1):2 (EG2):1 (CG/EG1). In order to do so and to further account for differences in activity preferences between urban and rural areas in Switzerland [59], cantons were grouped in blocks of 5 according to number of customers and population density. Each block contained 2 pairs

of cantons that were matched for geographical proximity. The matched pairs were then randomly assigned to one of the EGs and the remaining canton was assigned to the control group. To facilitate clustering, cantons with very few customers were combined and treated as one unit. We used the approach of Gao and colleagues [60] for nonaggregate cluster-randomized controlled trials with binary outcomes to estimate the number of participants to be contacted in order to detect an expected difference in participation rate. Being conservative in comparison to public polls [53] and studies [11], we expected a difference of 5% in participation rates (8% participation was expected for both intervention groups vs 3% for the control group). As participants in our study were clustered, a potential design effect had to be considered [60]. An assumed intracluster-correlation of .01 (according to [61]) and the average cluster size of mean (M) = 925 (standard deviation [SD] = 1356) yielded a design effect of 10.24. Thus, in order for the difference in participation rates to be significant at least 15,725 customers needed to be contacted (6475 for each experimental group and 2775 for the control group). We met this requirement by directly contacting 18,638 customers via email before the beginning of the PHI.

Procedure

After providing consent, all participants were instructed on how to use the pedometer or the app, respectively, and how to share the number of tracked steps via the Web-based platform of the health insurance company. The Web-based platform supported devices of the brands Garmin, Jawbone, and Fitbit, all commonly known manufacturers of wearables and fitness technology. Alternatively, participants could use the Fitbit app that is available for selected mobile phones. A systematic review has confirmed the validity of commercial pedometers [62], and recent studies provide evidence for the accuracy of smartphone apps for tracking physical activity data [63]. Owning an eligible tracking device (pedometer or smartphone app) was thus required for participation. Participants not owning an eligible pedometer were entitled to a 20% discount on a compatible device. All participants could use the Web-based platform any time to gain insight into their physical activity data as well as their degree of achievement with regard to their goal of 10,000 steps per day. In the charitable condition, participants could also log in to choose a particular charitable organization from a predefined list and set the proportion of money they want to donate. Participants were asked to set this proportion once at the beginning and once before the end of the PHI.

During the course of the intervention, participants received short informational texts in order to maintain motivation for daily physical activity (eg, "If you are going by bus consider getting off two stops prior to your destination to reach your goal of 10,000 steps per day"). Those texts were based on information material and recommendations for health effective daily activity provided by the Federal Bureau of Sports as well as on recommendations for increasing step count in everyday life [7] and on the Compendium of Physical Activities 3 [64]. Additionally, participants received a status mail on a monthly basis that informs them once again about their target achievement and the respective amount of money saved or donated during the past month. This mail also contained further

season-based tips on how to increase the daily step count (eg, recommending free geocaching apps or websites for summer days or popular snowshoeing trails during winter). The content of the monthly status mails was developed in cooperation with the insurance company.

At any time, participants were able to opt out of the PHI and request the deletion of all submitted data without giving reasons. In order to prevent high dropout rates that have been observed in past pedometer-based interventions [13], no bonus will be granted for past achievements if the participant decides to opt out of the PHI.

Data Collection and Variables

Data for analysis is partly collected by submission of information by the participants via the Web-based platform of the insurance company and partly by administering a Web-based questionnaire at 2 different points in time (T_1 and T_2) over the course of the intervention. After participants registered their pedometer or smartphone at the Web-based platform of the insurance company, the number of steps were synchronized automatically with the Web-based platform each day at midnight. However, participants could choose to deactivate automatic synchronization and enter their step count manually on the Web-based platform. Days where no step data is available (eg, because the pedometer was not worn or not charged) will be treated as missing data. The first measurement (T_1) is set at the beginning of the PHI for all groups, whereas the second measurement (T_2) is set at the end of the intervention for the experimental groups and after the first half of the intervention for the control group before they received financial incentives. Additional data, such as age, gender, or participants' health service billings, were provided by the insurance company. To guarantee appropriate response rates, participants received additional \$5 for each time they completed the questionnaire resulting in an additional bonus of \$10. See [Figure 1](#) for an overview of the study design.

The following variables were measured for analysis: the participation rate represents the primary outcome and is measured by calculating the participation rate in total and for the different groups, respectively. Participation rate is defined as the proportion of active participants that is participants that shared their data with the Web-based platform of the insurance company at least once. Secondary outcomes are continued use of the pedometer, performance of the participants, and health condition. The number of days at which participants share their step count with their health insurance company is used as an indicator of the continued use of the pedometer. The number of steps and the amount of money saved or donated indicate the performance of the participants. Apart from the number of steps, physical activity was also assessed by questionnaire measures namely hours of moderate to vigorous physical activity and hours of walking per week at T_1 and T_2 (based on the International Physical Activity Questionnaire [65,66]), walking on the way to work, physical activity at work, and during spare time at T_1 and T_2 . The proportion of money saved versus donated (at T_1 and T_2) is further used to evaluate the charitable incentive condition. We use health perception at T_1 and T_2

(“How would you rate your overall health status?”) [67-69] and improvement of health perception due to the intervention at T₂ (eg, “In general, my health improved due to the prevention program”) [67-69] as subjective measures and service billing with the health insurance company (ie, amount of money repaid by the insurance company per participant) after completion of the prevention program and 1 year later as objective measures in order to assess effects on participants’ health condition. Unless otherwise indicated, a 7-point Likert scale, from strongly disagree (1) to strongly agree (7), will be used for items requiring a response scale.

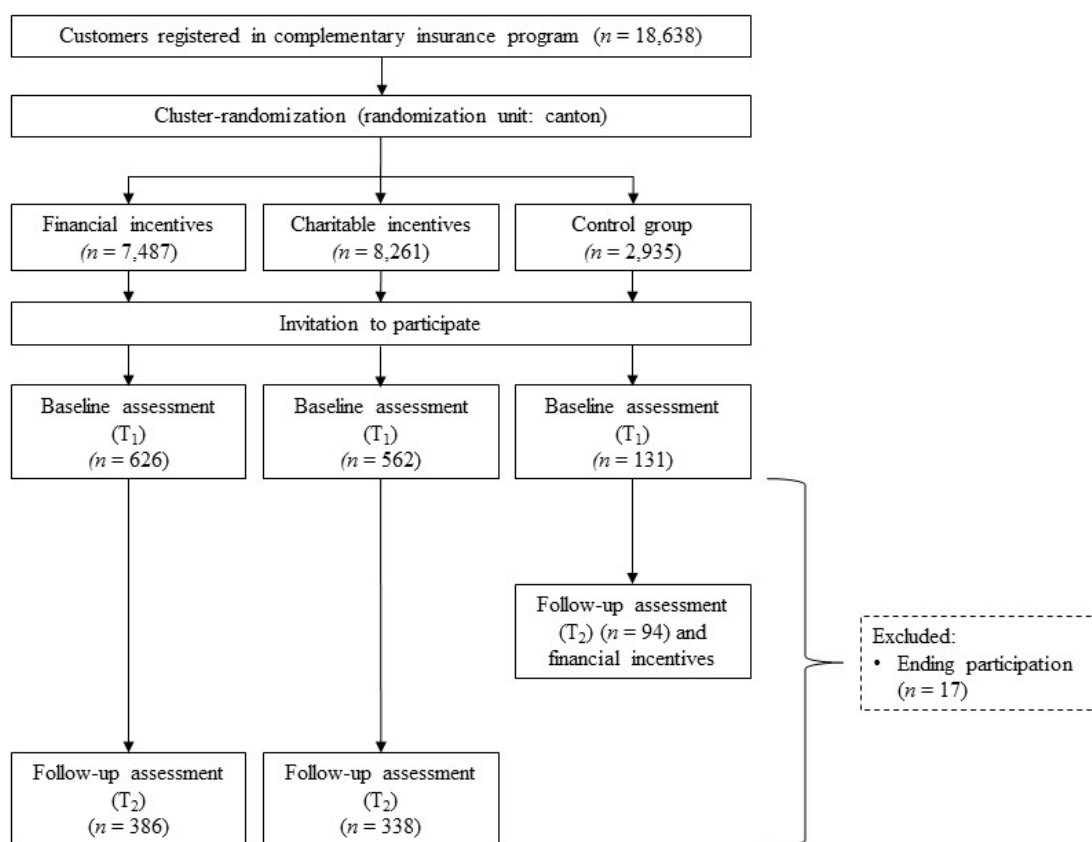
To exclude possible confounding influences, we will measure the following control variables: sociodemographic variables (age, gender, education, income, and nationality [67,70,71]) measured at T₁, technology readiness [72] measured at T₁, possession of pedometers and other self-tracking tools at T₁, pedometer brand measured at T₁, number of persons living in the participants’ household at T₂, living environment at T₁ (city center, outer city, village, countryside), amount of billing services preceding the prevention program at T₁, exchange with other participants of the prevention program at T₂, participation of a family member or friend at T₁, and observation of media coverage of the prevention program and possible impact on participants’ physical activity at T₂.

Additional variables were measured to better understand the participants’ behaviour. These variables are participants’ perception of the Web-based platform, perception of the insurance company (eg, perceived social responsibility), customer loyalty, participants’ willingness to share data with their insurance company, willingness to donate (in the charitable incentive group), reasons for participating and not participating, reasons for opting out, and improvement suggestions to the program.

Data Analysis

Due to the nested structure of the data, mixed-effect models will be used for data analysis. As measurements are nested within participants, the step count measurements represent the level 1 unit of analysis, whereas the participants represent the level 2 unit of analysis. A recent article [73] discusses the problem of faking with regard to financial incentives, (eg, faking step counts in order to qualify for financial rewards). This problem applies to our study as step counts could be entered manually. Step count measurements that are unusually high and were manually entered are likely to represent a tendency of faking. Thus, univariate and multivariate outlier analysis [74] will be conducted in order to identify participants that are prone to faking. Changes on outcomes solely measured at T₁ and T₂ will be analyzed performing a repeated-measures analysis of variance (rmANOVA). The analyses will be conducted using the nlme-package [75] in R [76] and the typical significance level of $\alpha = 5\%$ will be applied.

Figure 1. Study design.



Results

Survey Participation

In total, 1319 persons participated in the survey at T_1 . Of those, 47.46% (626/1319) belonged to the financial incentives group, 42.61% (562/1319) to the charitable incentives group, and 9.93% (131/1319) to the control group.

Baseline Characteristics

Table 1 presents the baseline characteristics of all T_1 survey participants for each of the different EGs. Unfortunately, participants' service billings with the health insurance company were not yet available at the time of writing. Between-group comparisons are based on one-way ANOVA for continuous variables and on chi-square tests for categorical variables. Due to the large number of participants, even small between-group differences are likely to become statistically significant. Hence, effect sizes are reported for between-group comparisons.

Participants were mostly Swiss (1195/1319, 90.60%), living in a village or on the countryside (836/1319, 63.38%), holding a university degree (597/1319, 45.26%), and were 43-years old on average ($M=42.95$, $SD = 13.11$). Slightly more men than women participated in the T_1 survey (638/1319, 48.14% vs

585/1319, 44.35%). A Fitbit pedometer or the Fitbit app was most often used for tracking physical activity (1116/1319, 84.61%) and more than half of the participants (709/1319, 53.75%) bought a pedometer in order to participate in the PHI.

While baseline characteristics show no meaningful group differences regarding age, gender, education, income, nationality, self-reported physical activity at work and during spare time, walking on the way to work, pedometer brand, prior possession of a pedometer, and participation of a family member or friend, group differences could be observed regarding residence of participants, self-reported physical activity and walking, and subjective health status. Differences regarding residence of participants indicate that matching groups according to population density may not be sufficient to account for residence differences.

Because these baseline characteristics are related to physical activity they are primarily relevant for the analysis of the secondary outcomes of the study. Consequently, residence of participants and subjective health status will be used as covariates in the statistical analyses of the secondary outcomes. Because mixed-effects models will be used for data analysis, group differences regarding baseline physical activity will be directly modelled by allowing different intercepts for the experimental groups.

Table 1. Demographics and baseline characteristics.

Characteristic ^a	Total (N=1319)	Financial incentives/ EG1 (n=626)	Charitable incentives/ EG2 (n=562)	Control group/ CG (n=131)	P	Effect size ^b
Group characteristics						
Number of cantons	26	8	11	7		
Number of customers contacted	18,638	7487	8216	2935		
Population density ^c (residents/km ² , median)	233.56	255.15	173.45	221.08		
Demographic variables						
Age	42.95 (13.11)	43.06 (13.25)	42.50 (12.88)	44.37 (13.40)	.36	.002
Gender (%)					.89	.01
Female	585 (44.35)	285 (45.53)	244 (43.42)	56 (42.75)		
Male	635 (48.14)	301 (48.08)	270 (48.04)	64 (48.85)		
Not declared	99 (7.51)	40 (6.39)	48 (8.54)	11 (8.40)		
Education ^d (%)					.17	.10
University	597 (45.26)	301 (48.08)	244 (43.42)	51 (39.69)		
Professional School	421 (31.92)	194 (30.99)	188 (33.45)	39 (29.77)		
High School	219 (16.60)	95 (15.18)	95 (16.90)	29 (22.14)		
Secondary School	25 (1.90)	13 (2.08)	10 (1.78)	2 (1.53)		
Primary School	6 (0.45)	4 (0.64)	1 (0.18)	1 (0.76)		
Not declared	51 (3.87)	19 (3.04)	24 (4.27)	8 (6.11)		
Place of Residence (%)					< .001	.27
Town	156 (11.83)	92 (14.70)	49 (8.72)	15 (11.45)		
Outskirts of town	327 (24.79)	185 (29.55)	116 (20.64)	26 (19.85)		
Village	644 (48.82)	270 (43.13)	303 (53.91)	71 (54.20)		
Countryside	192 (14.56)	79 (12.62)	94 (16.73)	19 (14.50)		
Income in CHF (%)					.25	.11
< 2500	68 (5.16)	29 (4.63)	35 (6.23)	4 (3.05)		
2501–5000	203 (15.39)	90 (14.38)	91 (16.19)	22 (16.79)		
5001–7500	418 (31.69)	204 (32.59)	176 (31.32)	38 (29.01)		
7501–10,000	220 (16.68)	107 (17.09)	87 (15.48)	26 (19.85)		
>10,000	137 (10.39)	78 (12.46)	50 (8.90)	9 (6.87)		
Not declared	273 (20.70)	118 (18.85)	123 (21.89)	32 (24.43)		
Nationality (%)					.03	.13
Swiss	1195 (90.60)	554 (88.50)	520 (92.53)	121 (92.37)		
German	56 (4.25)	36 (5.75)	17 (3.02)	3 (2.29)		
Other	54 (4.09)	32 (5.11)	16 (2.85)	6 (4.58)		
Not declared	14 (1.06)	4 (0.64)	9 (1.60)	1 (0.76)		
Physical activity measures						
Self-reported moderate to vigorous physical activity ^e (hours/week)					< .001	.03
Mean (SD)	8.90 (11.10)	8.96 (11.38)	8.75 (10.59)	9.26 (11.25)		
Median	6.00	6.00	6.00	5.25		
Self-reported walking ^e (hours/week)					< .001	.03

Characteristic ^a	Total (N=1319)	Financial incentives/ EG1 (n=626)	Charitable incentives/ EG2 (n=562)	Control group/ CG (n=131)	<i>P</i>	Effect size ^b
Mean (SD)	10.01 (13.70)	10.31 (13.44)	9.99 (15.55)	8.61 (10.87)		
Median	6.00	6.54	6.00	4.50		
Physical activity at work	3.45 (1.88)	3.37 (1.84)	3.48 (1.91)	3.67 (1.90)	< .001	.009
Physical activity during spare time	5.26 (1.17)	5.36 (1.19)	5.19 (1.13)	5.09 (1.22)	.06	.003
Walking on way to work (%)						
Yes	234 (17.74)	126 (20.13)	87 (15.48)	21 (16.03)	.10	.06
No	1085 (82.26)	500 (79.87)	475 (84.52)	110 (84.97)		
Other						
Subjective health status	3.60 (0.73)	3.66 (0.73)	3.55 (0.71)	3.53 (0.80)	<.001	.02
Pedometer brand (%)					.73	.09
Fitbit	832 (62.08)	387 (61.82)	359 (63.88)	86 (65.65)		
Fitbit App	284 (21.53)	141 (22.52)	121 (21.53)	22 (16.79)		
Garmin	138 (10.46)	69 (11.02)	55 (9.79)	14 (10.69)		
Jawbone	65 (4.93)	29 (4.63)	27 (4.80)	9 (6.87)		
Pedometer bought for participation (%)					.04	.07
Yes	709 (53.75)	316 (50.48)	325 (57.83)	68 (51.91)		
No	571 (43.29)	289 (46.17)	221 (39.32)	61 (46.56)		
Not declared	39 (2.96)	21 (3.35)	16 (2.85)	2 (1.53)		
Participation of family member or friend					.65	.03
Yes	251 (19.03)	122 (19.49)	108 (19.22)	21 (16.03)		
No	1068 (80.97)	504 (80.51)	454 (80.78)	110 (83.97)		

^a Unless otherwise indicated, mean (SD) are displayed for continuous variables and absolute frequencies (relative frequencies) are displayed for categorical variables.

^b η^2 is used as a measurement of effect size for one-way ANOVAs and Cramer's *V* is used as a measurement of effect size for chi-square test. Effect size conventions for η^2 are: .01 (small effect), .09 (medium effect), .25 (large effect). Effect size conventions for Cramer's *V* are: .10 (small effect), .30 (medium effect), .50 (large effect) for $df=1$ and .07 (small effect), .21 (medium effect), .35 (large effect) for $df=2$ [77].

^c Based on information of the Swiss Federal Office for Statistics for the year 2013 [78].

^d Categories with expected frequencies <5 were not considered for between-group comparison.

^e Due to violation of normality a logarithmic transformation was applied for between-group comparison and the median is reported in addition to the mean.

Discussion

Strengths and Limitations

This study protocol describes the design and baseline characteristics of a longitudinal cluster-randomized controlled trial testing the effects of monetary and charitable incentives on the acceptance of and adherence to a pedometer-based health prevention program. To the best of our knowledge, this is the first study to systematically test the effects of different incentive strategies within a pedometer-based health intervention offered by a large health insurance company in western cultures. External validity has to be pointed out as a key strength of the described trial. Both study design and incentive strategies are tested in a real-world setting, thus ensuring the applicability of the results and conclusions.

When interpreting the results of this study, some limitations have to be considered: selection effects might affect the participation in the PHI. For example, by especially attracting highly motivated or physically active participants, those effects could potentially undermine the power of our analyses. However, we will be able to control our analyses for prior level of physical activity. Further, comparisons of T_2 measures between the groups have to be interpreted with caution, because T_2 reflects different time points for experimental and control groups. T_2 was set at 6 months after start of the intervention for the EGs and at 3 months for the CG. However, the main focus of this study is on the acceptance of the promotion program, which is operationalized using the participation rate, and is thus not dependent on any T_2 measurement. Lastly, the goal of reaching 10,000 steps per day on average might have detrimental motivational effects for some participants. It might be perceived as too challenging for very inactive participants or when

participants were not able to achieve sufficiently high step counts for several days in a month.

Conclusions

Considering the importance of physical activity for the course of various NCDs, this study yields important insights for

insurance companies, public health institutions, and health practitioners alike. If the effectiveness of the examined incentive strategies is demonstrated, this study provides the basis for simple yet powerful health interventions that can easily be implemented by various health care institutions.

Acknowledgments

We would like to thank the institutional review board of the University of St. Gallen for their valuable feedback and support.

The study protocol was approved by the Ethics Committee of the University of St. Gallen, Switzerland (reference number: HSG-EC-2015-04-22-A; date of approval June, 4th, 2015). Informed consent to participate was obtained from all participants of the study.

Conflicts of Interest

All authors have read and understood the editorial policies on competing interests. We declare the following possible competing interest: the study is partly funded by the CSS Insurance.

References

1. Mendis S. Global Status Report on Noncommunicable Diseases. Geneva: World Health Organization; 2014.
2. Penedo FJ, Dahn JR. Exercise and well-being: a review of mental and physical health benefits associated with physical activity. *Curr Opin Psychiatry* 2005;18:189-193. [Medline: [16639173](#)]
3. Warburton DE, Nicol CW, Bredin SS. Health benefits of physical activity: the evidence. *CMAJ* 2006;174:801-809 [FREE Full text] [doi: [10.1503/cmaj.051351](#)] [Medline: [16534088](#)]
4. Blumenthal JA, Babyak MA, Doraiswamy PM, Watkins L, Hoffman BM, Barbour KA, et al. Exercise and pharmacotherapy in the treatment of major depressive disorder. *Psychosom Med* 2007;69:587-596 [FREE Full text] [doi: [10.1097/PSY.0b013e318148c19a](#)] [Medline: [17846259](#)]
5. Andajani-Sutjahjo S, Ball K, Warren N, Inglis V, Crawford D. Perceived personal, social and environmental barriers to weight maintenance among young women: A community survey. *Int J Behav Nutr Phys Act* 2004;1:15 [FREE Full text] [doi: [10.1186/1479-5868-1-15](#)] [Medline: [15462679](#)]
6. Chan CB, Ryan DA. Assessing the effects of weather conditions on physical activity participation using objective measures. *Int J Environ Res Public Health* 2009;6:2639-2654 [FREE Full text] [doi: [10.3390/ijerph6102639](#)] [Medline: [20054460](#)]
7. Choi BCK, Pak AWP, Choi JCL, Choi ECL. Daily step goal of 10,000 steps: a literature review. *Clin Invest Med* 2007;30:E146-E151. [Medline: [17716553](#)]
8. Swan M. Emerging patient-driven health care models: an examination of health social networks, consumer personalized medicine and quantified self-tracking. *Int J Environ Res Public Health* 2009;6:492-525 [FREE Full text] [doi: [10.3390/ijerph6020492](#)] [Medline: [19440396](#)]
9. Flood J. ABI Research. 2013. Wearable Computing Devices, Like Apples iWatch, Will Exceed 485 Million Annual Shipments by 2018 URL: <https://www.abiresearch.com/press/wearable-computing-devices-like-apples-iwatch-will/> [accessed 2016-06-03] [WebCite Cache ID 6hzNhdYyD]
10. Ledger D, McCaffrey D. Inside Wearables - How the Science of Human Behavior Change Offers the Secret to Long-Term Engagement. 2014. URL: <http://endeavourpartners.net/assets/Endeavour-Partners-Wearables-White-Paper-20141.pdf> [accessed 2016-08-26] [WebCite Cache ID 6k3IskyEA]
11. YouGov Deutschland AG. Self-Tracking: Rund jeder Dritte würde gesundheitsbezogene Daten an Krankenkassener weitergeben. 2015. URL: <https://yougov.de/loesungen/ueber-yougov/presse/presse-2015/pressemitteilung-self-tracking-rund-jeder-dritte-wurde-gesundheitsbezogene-daten-an-krankenkassener-weitergeben/> [accessed 2016-08-26] [WebCite Cache ID 6k3J8M8It]
12. Bandura A. Social cognitive theory of self-regulation. *Organizational Behavior and Human Decision Processes* 1991;50:248-287. [doi: [10.1016/0749-5978\(91\)90022-L](#)]
13. Bravata DM, Smith-Spangler C, Sundaram V, Gienger AL, Lin N, Lewis R, et al. Using pedometers to increase physical activity and improve health: a systematic review. *JAMA* 2007;298:2296-2304. [doi: [10.1001/jama.298.19.2296](#)] [Medline: [18029834](#)]
14. Kang M, Marshall SJ, Barreira TV, Lee J. Effect of pedometer-based physical activity interventions: a meta-analysis. *Res Q Exerc Sport* 2009;80:648-655. [doi: [10.1080/02701367.2009.10599604](#)] [Medline: [19791652](#)]
15. Michie S, Abraham C, Whittington C, McAteer J, Gupta S. Effective techniques in healthy eating and physical activity interventions: a meta-regression. *Health Psychol* 2009;28:690-701. [doi: [10.1037/a0016136](#)] [Medline: [19916637](#)]

16. OECD. Health at a Glance 2013: OECD Indicators. 2013. URL: <https://www.oecd.org/els/health-systems/Health-at-a-Glance-2013.pdf> [accessed 2016-08-26] [WebCite Cache ID 6k3JOLByK]
17. Belanger F, Xu H. The role of information systems research in shaping the future of information privacy. *Info Systems J* 2015;25:573-578. [doi: [10.1111/isj.12092](https://doi.org/10.1111/isj.12092)]
18. Morosan C, DeFranco A. Disclosing personal information via hotel apps: a privacy calculus perspective. *International Journal of Hospitality Management* 2015;47:120-130. [doi: [10.1016/j.ijhm.2015.03.008](https://doi.org/10.1016/j.ijhm.2015.03.008)]
19. Wang T, Duong TD, Chen CC. Intention to disclose personal information via mobile applications: a privacy calculus perspective. *International Journal of Information Management* 2016;36:531-542. [doi: [10.1016/j.ijinfomgt.2016.03.003](https://doi.org/10.1016/j.ijinfomgt.2016.03.003)]
20. Xu H, Teo H, Tan BCY, Agarwal R. The role of push-pull technology in privacy calculus: the case of location-based services. *Journal of Management Information Systems* 2010;26:135-174. [doi: [10.2753/MIS0742-1222260305](https://doi.org/10.2753/MIS0742-1222260305)]
21. Sun Y, Wang N, Shen X, Zhang JX. Location information disclosure in location-based social network services: Privacy calculus, benefit structure, and gender differences. *Computers in Human Behavior* 2015;52:278-292. [doi: [10.1016/j.chb.2015.06.006](https://doi.org/10.1016/j.chb.2015.06.006)]
22. Kehr F, Kowatsch T, Wentzel D, Fleisch E. Blissfully ignorant: the effects of general privacy concerns, general institutional trust, and affect in the privacy calculus. *Info Systems J* 2015;25:607-635. [doi: [10.1111/isj.12062](https://doi.org/10.1111/isj.12062)]
23. Dinev T, Hart P. An extended privacy calculus model for e-commerce transactions. *Information Systems Research* 2006;17:61-80. [doi: [10.1287/isre.1060.0080](https://doi.org/10.1287/isre.1060.0080)]
24. Anderson CL, Agarwal R. The digitization of healthcare: boundary risks, emotion, and consumer willingness to disclose personal health information. *Information Systems Research* 2011;22:469-490. [doi: [10.1287/isre.1100.0335](https://doi.org/10.1287/isre.1100.0335)]
25. Angst C, Agarwal R. Adoption of electronic health records in the presence of privacy concerns: the elaboration likelihood model and individual persuasion. *MIS Quarterly* 2009;33:339-370.
26. Bansal G, Zahedi F, Gefen D. The impact of personal dispositions on information sensitivity, privacy concern and trust in disclosing health information online. *Decision Support Systems* 2010;49:138-150. [doi: [10.1016/j.dss.2010.01.010](https://doi.org/10.1016/j.dss.2010.01.010)]
27. Li H, Wu J, Gao Y, Shi Y. Examining individuals' adoption of healthcare wearable devices: an empirical study from privacy calculus perspective. *Int J Med Inform* 2016;88:8-17. [doi: [10.1016/j.ijmedinf.2015.12.010](https://doi.org/10.1016/j.ijmedinf.2015.12.010)] [Medline: [26878757](https://pubmed.ncbi.nlm.nih.gov/26878757/)]
28. Norberg P, Horne D, Horne D. The privacy paradox: personal information disclosure intentions versus behaviors. *Journal of Consumer Affairs* 2007;41:100-126. [doi: [10.1111/j.1745-6606.2006.00070.x](https://doi.org/10.1111/j.1745-6606.2006.00070.x)]
29. Jensen C, Potts C, Jensen C. Privacy practices of Internet users: self-reports versus observed behavior. *International Journal of Human-Computer Studies* 2005;63:203-227. [doi: [10.1016/j.ijhcs.2005.04.019](https://doi.org/10.1016/j.ijhcs.2005.04.019)]
30. Spiekermann S, Grossklags J, Berendt B. E-privacy in 2nd generation E-commerce: privacy preferences versus actual behavior. 2001 Presented at: 3rd ACM conference on Electronic Commerce; Oct 14-17; Tampa, FL. [doi: [10.1145/501158.501163](https://doi.org/10.1145/501158.501163)]
31. Tufekci Z. Can you see me now? Audience and disclosure regulation in online social network sites. *Bulletin of Science, Technology & Society* 2007;28:20-36. [doi: [10.1177/0270467607311484](https://doi.org/10.1177/0270467607311484)]
32. Paul-Ebhohimhen V, Avenell A. Systematic review of the use of financial incentives in treatments for obesity and overweight. *Obes Rev* 2008;9:355-367. [doi: [10.1111/j.1467-789X.2007.00409.x](https://doi.org/10.1111/j.1467-789X.2007.00409.x)] [Medline: [17956546](https://pubmed.ncbi.nlm.nih.gov/17956546/)]
33. Volpp KG, Troxel AB, Pauly MV, Glick HA, Puig A, Asch DA, et al. A randomized, controlled trial of financial incentives for smoking cessation. *N Engl J Med* 2009;360:699-709. [doi: [10.1056/NEJMs0806819](https://doi.org/10.1056/NEJMs0806819)] [Medline: [19213683](https://pubmed.ncbi.nlm.nih.gov/19213683/)]
34. Giles EL, Robalino S, McColl E, Sniehotta FF, Adams J. The effectiveness of financial incentives for health behaviour change: systematic review and meta-analysis. *PLoS One* 2014;9:e90347 [FREE Full text] [doi: [10.1371/journal.pone.0090347](https://doi.org/10.1371/journal.pone.0090347)] [Medline: [24618584](https://pubmed.ncbi.nlm.nih.gov/24618584/)]
35. Mantzari E, Vogt F, Shemilt I, Wei Y, Higgins JP, Marteau TM. Personal financial incentives for changing habitual health-related behaviors: a systematic review and meta-analysis. *Prev Med* 2015;75:75-85 [FREE Full text] [doi: [10.1016/j.ypmed.2015.03.001](https://doi.org/10.1016/j.ypmed.2015.03.001)] [Medline: [25843244](https://pubmed.ncbi.nlm.nih.gov/25843244/)]
36. Finkelstein EA, Brown DS, Brown DR, Buchner DM. A randomized study of financial incentives to increase physical activity among sedentary older adults. *Prev Med* 2008;47:182-187. [doi: [10.1016/j.ypmed.2008.05.002](https://doi.org/10.1016/j.ypmed.2008.05.002)] [Medline: [18571226](https://pubmed.ncbi.nlm.nih.gov/18571226/)]
37. Strohacker K, Galarraga O, Williams DM. The impact of incentives on exercise behavior: a systematic review of randomized controlled trials. *Ann Behav Med* 2014;48:92-99 [FREE Full text] [doi: [10.1007/s12160-013-9577-4](https://doi.org/10.1007/s12160-013-9577-4)] [Medline: [24307474](https://pubmed.ncbi.nlm.nih.gov/24307474/)]
38. Sutherland K, Christianson JB, Leatherman S. Impact of targeted financial incentives on personal health behavior: a review of the literature. *Med Care Res Rev* 2008;65(Suppl):36S-78S. [doi: [10.1177/1077558708324235](https://doi.org/10.1177/1077558708324235)] [Medline: [19015378](https://pubmed.ncbi.nlm.nih.gov/19015378/)]
39. Mitchell MS, Goodman JM, Alter DA, John LK, Oh PI, Pakosh MT, et al. Financial incentives for exercise adherence in adults: systematic review and meta-analysis. *Am J Prev Med* 2013;45:658-667. [doi: [10.1016/j.amepre.2013.06.017](https://doi.org/10.1016/j.amepre.2013.06.017)] [Medline: [24139781](https://pubmed.ncbi.nlm.nih.gov/24139781/)]
40. Patel MS, Asch DA, Rosin R, Small DS, Bellamy SL, Heuer J, et al. Framing financial incentives to increase physical activity among overweight and obese adults: a randomized, controlled trial. *Ann Intern Med* 2016;164:385-394. [doi: [10.7326/M15-1635](https://doi.org/10.7326/M15-1635)] [Medline: [26881417](https://pubmed.ncbi.nlm.nih.gov/26881417/)]
41. Patel MS, Asch DA, Rosin R, Small DS, Bellamy SL, Eberbach K, et al. Individual versus team-based financial incentives to increase physical activity: a randomized, controlled trial. *J Gen Intern Med* 2016. [doi: [10.1007/s11606-016-3627-0](https://doi.org/10.1007/s11606-016-3627-0)] [Medline: [26976287](https://pubmed.ncbi.nlm.nih.gov/26976287/)]

42. Leahey TM, Subak LL, Fava J, Schembri M, Thomas G, Xu X, et al. Benefits of adding small financial incentives or optional group meetings to a web-based statewide obesity initiative. *Obesity (Silver Spring)* 2015;23:70-76 [[FREE Full text](#)] [doi: [10.1002/oby.20937](https://doi.org/10.1002/oby.20937)] [Medline: [25384463](#)]
43. Kullgren JT, Harkins KA, Bellamy SL, Gonzales A, Tao Y, Zhu J, et al. A mixed-methods randomized controlled trial of financial incentives and peer networks to promote walking among older adults. *Health Educ Behav* 2014;41(Suppl):43S-50S [[FREE Full text](#)] [doi: [10.1177/1090198114540464](https://doi.org/10.1177/1090198114540464)] [Medline: [25274710](#)]
44. Cahill K, Perera R. Competitions and incentives for smoking cessation. *Cochrane Database Syst Rev* 2011;4:CD004307. [doi: [10.1002/14651858.CD004307.pub4](https://doi.org/10.1002/14651858.CD004307.pub4)] [Medline: [21491388](#)]
45. Finkelstein EA, Sahasranaman A, John G, Haaland BA, Bilger M, Sloan RA, et al. Design and baseline characteristics of participants in the TRial of Economic Incentives to Promote Physical Activity (TRIPPA): a randomized controlled trial of a six month pedometer program with financial incentives. *Contemp Clin Trials* 2015;41:238-247. [doi: [10.1016/j.cct.2015.01.020](https://doi.org/10.1016/j.cct.2015.01.020)] [Medline: [25666856](#)]
46. Kahneman D, Knetsch JL. Valuing public goods: the purchase of moral satisfaction. *Journal of Environmental Economics and Management* 1992;22:57-70. [doi: [10.1016/0095-0696\(92\)90019-S](https://doi.org/10.1016/0095-0696(92)90019-S)]
47. Gneezy A, Gneezy U, Nelson LD, Brown A. Shared social responsibility: a field experiment in pay-what-you-want pricing and charitable giving. *Science* 2010;329(5989):325-327. [doi: [10.1126/science.1186744](https://doi.org/10.1126/science.1186744)]
48. Smith H, Dinev T, Xu H. Information privacy research: an interdisciplinary review. *MIS quarterly* 2011;35:989-1015.
49. Culnan MJ, Bies RJ. Consumer privacy: balancing economic and justice considerations. *J Social Issues* 2003;59:323-342. [doi: [10.1111/1540-4560.00067](https://doi.org/10.1111/1540-4560.00067)]
50. Hann I, Hui K, Lee S, Png I. Overcoming online information privacy concerns: an information-processing theory approach. *Journal of Management Information Systems* 2007;24:13-42. [doi: [10.2753/MIS0742-1222240202](https://doi.org/10.2753/MIS0742-1222240202)]
51. Hann I, Hui K, Lee T, Png I. Online information privacy: measuring the cost-benefit trade-off. 2002 Presented at: International Conference on Information Systems; Dec 15 - 18; Barcelona.
52. Derikx S, De Reuver M, Kroesen M, Bouwman H. Buying-off privacy concerns for mobility services in the Internet-of-things era. 2015 Presented at: 28th Bled eConference; June 7-10; Bled, Slovenia.
53. 20 M. Die 20-Minuten-Leser stehen auf Self-Tracking. 2015. URL: <http://www.20min.ch/diashow/diashow.tmpl?showid=130733> [accessed 2016-06-03] [[WebCite Cache ID 6hzNZiBBb](#)]
54. Haskell WL, Lee I, Pate RR, Powell KE, Blair SN, Franklin BA, et al. Physical activity and public health: updated recommendation for adults from the American College of Sports Medicine and the American Heart Association. *Med Sci Sports Exerc* 2007;39:1423-1434. [doi: [10.1249/mss.0b013e3180616b27](https://doi.org/10.1249/mss.0b013e3180616b27)] [Medline: [17762377](#)]
55. Moholdt T, Wisløff U, Lydersen S, Nauman J. Current physical activity guidelines for health are insufficient to mitigate long-term weight gain: more data in the fitness versus fatness debate (The HUNT study, Norway). *Br J Sports Med* 2014;48:1489-1496. [doi: [10.1136/bjsports-2014-093416](https://doi.org/10.1136/bjsports-2014-093416)] [Medline: [24782484](#)]
56. Nelson ME, Rejeski WJ, Blair SN, Duncan PW, Judge JO, King AC, et al. Physical activity and public health in older adults: recommendation from the American College of Sports Medicine and the American Heart Association. *Med Sci Sports Exerc* 2007;39:1435-1445. [doi: [10.1249/mss.0b013e3180616aa2](https://doi.org/10.1249/mss.0b013e3180616aa2)] [Medline: [17762378](#)]
57. Tudor-Locke C, Bassett DR. How many steps/day are enough? Preliminary pedometer indices for public health. *Sports Med* 2004;34:1-8. [Medline: [14715035](#)]
58. Tudor-Locke C, Craig CL, Brown WJ, Clemes SA, De Cocker K, Giles-Corti B, et al. How many steps/day are enough? For adults. *Int J Behav Nutr Phys Act* 2011;8:79 [[FREE Full text](#)] [doi: [10.1186/1479-5868-8-79](https://doi.org/10.1186/1479-5868-8-79)] [Medline: [21798015](#)]
59. Lamprecht M, Fischer A, Stamm H. Sport Schweiz 2014: Sportaktivität und Sportinteresse der Schweizer Bevölkerung. 2014. URL: http://www.baspo.admin.ch/content/baspo-internet/de/dokumentation/publikationen/sport-schweiz-2014/_jcr_content/contentPar/downloadlist/downloadItems/665_1464274287742.download/sport_schweiz_2014_d.pdf [accessed 2016-08-26] [[WebCite Cache ID 6k3KbJdGN](#)]
60. Gao F, Earnest A, Matchar DB, Campbell MJ, Machin D. Sample size calculations for the design of cluster randomized trials: a summary of methodology. *Contemp Clin Trials* 2015;42:41-50. [doi: [10.1016/j.cct.2015.02.011](https://doi.org/10.1016/j.cct.2015.02.011)] [Medline: [25766887](#)]
61. Donner A, Klar N. Design and Analysis of Cluster Randomization Trials in Health Research. London: Arnold; 2000.
62. Evenson KR, Goto MM, Furberg RD. Systematic review of the validity and reliability of consumer-wearable activity trackers. *Int J Behav Nutr Phys Act* 2015;12:159 [[FREE Full text](#)] [doi: [10.1186/s12966-015-0314-1](https://doi.org/10.1186/s12966-015-0314-1)] [Medline: [26684758](#)]
63. Case MA, Burwick HA, Volpp KG, Patel MS. Accuracy of smartphone applications and wearable devices for tracking physical activity data. *JAMA* 2015;313:625-626. [doi: [10.1001/jama.2014.17841](https://doi.org/10.1001/jama.2014.17841)] [Medline: [25668268](#)]
64. Ainsworth B, Haskell W, Herrmann S, Meckes N, Bassett J, Tudor-Locke C. Healthy Lifestyles Research Center, College of Nursing & Health Innovation, Arizona State University. 2015. The Compendium of Physical Activities Tracking Guide URL: <https://sites.google.com/site/compendiumofphysicalactivities/> [accessed 2015-08-01] [[WebCite Cache ID 6hzNCH71s](#)]
65. Compernelle S, Vandelanotte C, Cardon G, De Bourdeaudhuij I, De Cocker CK. Effectiveness of a web-based, computer-tailored, pedometer-based physical activity intervention for adults: a cluster randomized controlled trial. *J Med Internet Res* 2015;17:e38 [[FREE Full text](#)] [doi: [10.2196/jmir.3402](https://doi.org/10.2196/jmir.3402)] [Medline: [25665498](#)]

66. Craig CL, Marshall AL, Sjöström M, Bauman AE, Booth ML, Ainsworth BE, et al. International physical activity questionnaire: 12-country reliability and validity. *Med Sci Sports Exerc* 2003;35:1381-1395. [doi: [10.1249/01.MSS.0000078924.61453.FB](https://doi.org/10.1249/01.MSS.0000078924.61453.FB)] [Medline: [12900694](https://pubmed.ncbi.nlm.nih.gov/12900694/)]
67. DiPietro L. Physical activity in aging: changes in patterns and their relationship to health and function. *J Gerontol A Biol Sci Med Sci* 2001;Spec No 2:13-22. [Medline: [11730234](https://pubmed.ncbi.nlm.nih.gov/11730234/)]
68. Fayers PM, Sprangers MAG. Understanding self-rated health. *Lancet* 2002;359:187-188. [doi: [10.1016/S0140-6736\(02\)07466-4](https://doi.org/10.1016/S0140-6736(02)07466-4)] [Medline: [11812551](https://pubmed.ncbi.nlm.nih.gov/11812551/)]
69. Jylhä M. What is self-rated health and why does it predict mortality? Towards a unified conceptual model. *Soc Sci Med* 2009;69:307-316. [doi: [10.1016/j.socscimed.2009.05.013](https://doi.org/10.1016/j.socscimed.2009.05.013)] [Medline: [19520474](https://pubmed.ncbi.nlm.nih.gov/19520474/)]
70. Beyer A, Wolff JK, Warner LM, Schüz B, Wurm S. The role of physical activity in the relationship between self-perceptions of ageing and self-rated health in older adults. *Psychol Health* 2015;30:671-685. [doi: [10.1080/08870446.2015.1014370](https://doi.org/10.1080/08870446.2015.1014370)] [Medline: [25720739](https://pubmed.ncbi.nlm.nih.gov/25720739/)]
71. Salive ME. Multimorbidity in older adults. *Epidemiol Rev* 2013;35:75-83. [doi: [10.1093/epirev/mxs009](https://doi.org/10.1093/epirev/mxs009)] [Medline: [23372025](https://pubmed.ncbi.nlm.nih.gov/23372025/)]
72. Parasuraman A. Technology Readiness Index (Tri): a multiple-item scale to measure readiness to embrace new technologies. *Journal of Service Research* 2000;2:307-320. [doi: [10.1177/109467050024001](https://doi.org/10.1177/109467050024001)]
73. Marteau TM, Mantzari E. Public health: the case for pay to quit. *Nature* 2015;523:40-41. [doi: [10.1038/523040a](https://doi.org/10.1038/523040a)] [Medline: [26135443](https://pubmed.ncbi.nlm.nih.gov/26135443/)]
74. Tabachnick B, Fidell L. Using multivariate statistics. 5th ed. Boston: Allyn & Bacon/Pearson Education; 2007.
75. Pinheiro J, Bates D, DebRoy S, Sarkar D, R Core Team. nlme: Linear and Nonlinear Mixed Effects Models. R package version 3. 2016. URL: <https://cran.r-project.org/web/packages/nlme/nlme.pdf> [accessed 2016-08-26] [WebCite Cache ID [6k3L9jVnq](https://www.webcitation.org/6k3L9jVnq)]
76. R Core Team. R: A language and environment for statistical computing. Vienna, Austria: R Foundation for Statistical Computing; 2014. URL: <https://www.r-project.org/> [accessed 2016-08-26] [WebCite Cache ID [6k3LIhxjk](https://www.webcitation.org/6k3LIhxjk)]
77. Cohen J. Statistical Power Analysis for the Social Sciences, 2nd ed. Hillsdale: Erlbaum; 1988.
78. Swiss Federal Office for Statistics. 2013. Statistischer Atlas der Schweiz - Bevölkerungsdichte 2013 URL: https://www.atlas.bfs.admin.ch/maps/13/de/9681_75_3501_70/17032.html [accessed 2016-08-26] [WebCite Cache ID [6k3ECZtgM](https://www.webcitation.org/6k3ECZtgM)]

Abbreviations

- CG:** control group
- EG:** experimental group
- M:** mean
- NCD:** noncommunicable disease
- PHI:** pedometer-based health intervention
- rmANOVA:** repeated-measures analysis of variance
- SD:** standard deviation

Edited by G Eysenbach; submitted 03.06.16; peer-reviewed by M Mitchell, C Ainsworth; comments to author 25.07.16; revised version received 12.08.16; accepted 21.08.16; published 13.09.16

Please cite as:

Kowatsch T, Kramer JN, Kehr F, Wahle F, Elser N, Fleisch E

Effects of Charitable Versus Monetary Incentives on the Acceptance of and Adherence to a Pedometer-Based Health Intervention: Study Protocol and Baseline Characteristics of a Cluster-Randomized Controlled Trial

JMIR Res Protoc 2016;5(3):e181

URL: <http://www.researchprotocols.org/2016/3/e181/>

doi: [10.2196/resprot.6089](https://doi.org/10.2196/resprot.6089)

PMID:

©Tobias Kowatsch, Jan-Niklas Kramer, Flavius Kehr, Fabian Wahle, Niklas Elser, Elgar Fleisch. Originally published in JMIR Research Protocols (<http://www.researchprotocols.org>), 13.09.2016. This is an open-access article distributed under the terms of the Creative Commons Attribution License (<http://creativecommons.org/licenses/by/2.0/>), which permits unrestricted use, distribution, and reproduction in any medium, provided the original work, first published in JMIR Research Protocols, is properly cited. The complete bibliographic information, a link to the original publication on <http://www.researchprotocols.org>, as well as this copyright and license information must be included.