


10 Years DOI Desk at ETH Zurich

Other Conference Item

Author(s):

Hirschmann, Barbara 

Publication date:

2019-09-13

Permanent link:

<https://doi.org/10.3929/ethz-b-000365054>

Rights / license:

Creative Commons Attribution-NonCommercial-ShareAlike 4.0 International



10 Years DOI Desk at ETH Zurich

Looking back and ahead

Persistent Identifiers in Research – Celebrating 10 Years of DOI Desk at ETH Zurich

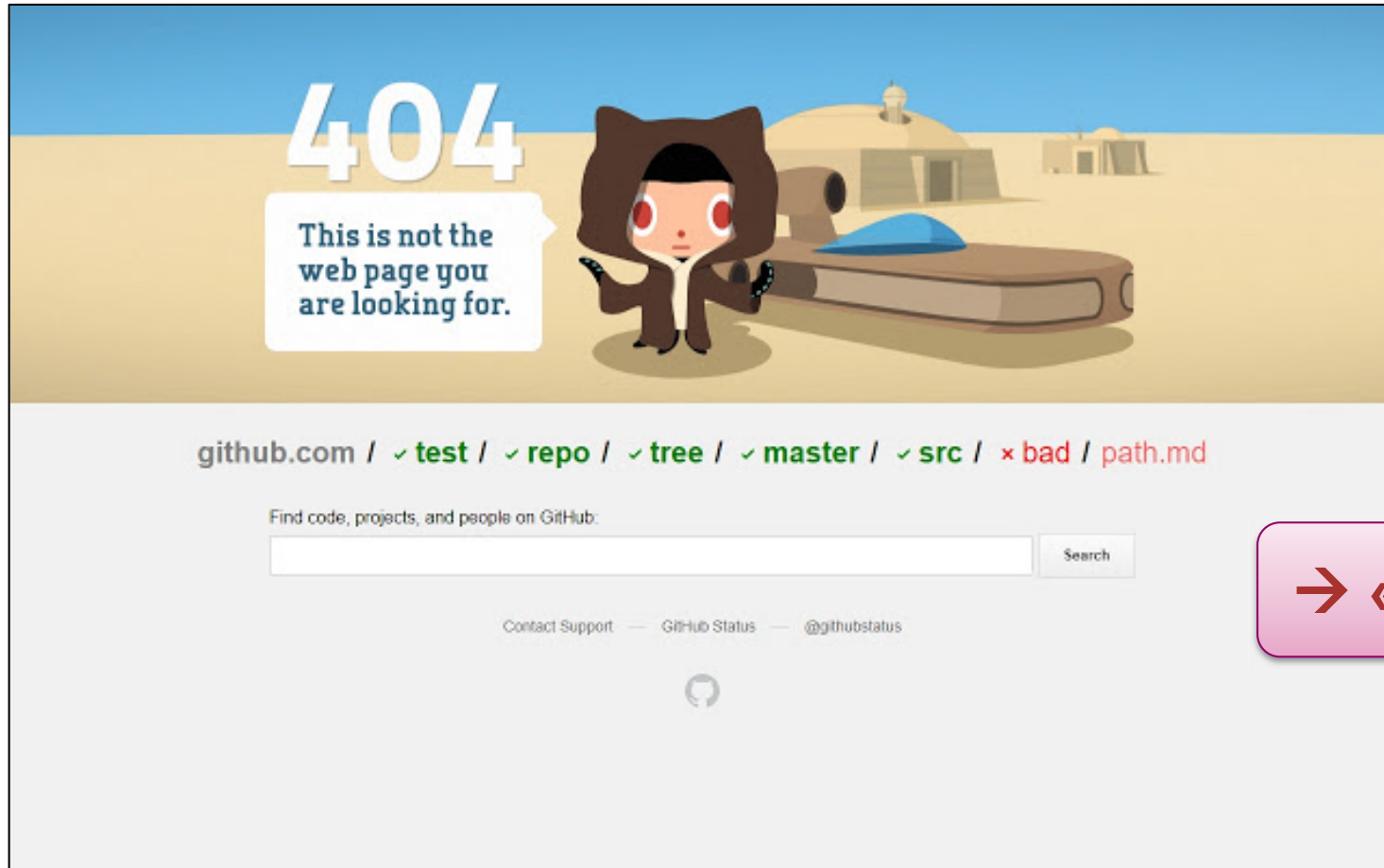
13th September 2019

Barbara Hirschmann, Head E-Publishing, ETH Library



Licensed under Creative Commons Attribution-NonCommercial-ShareAlike 4.0 International.
The license does not apply to images, logos and any other content expressly marked otherwise.

What's the problem we are trying to solve with DOIs?



DOIs – Persistent Identifiers

- A **Persistent Identifier** is a long-lasting reference to a document, file, web page, or other object
 - It usually comes with a **resolving mechanism** where each Persistent Identifier resolves to a URL
 - While the URL where a publication / dataset is located may change over time, the PI **does not change** and **always leads to the most current location** of a resource

DOIs – Persistent Identifiers that enable citations

- **A DOI is a Persistent Identifier that is «citable»** because
 - ✓ Publishers / repositories **update the URLs** associated with DOIs
 - ✓ Publishers / repositories **don't change the content** associated with a DOI after its publication



DRYAD About ▾ For researchers ▾ For organizations ▾

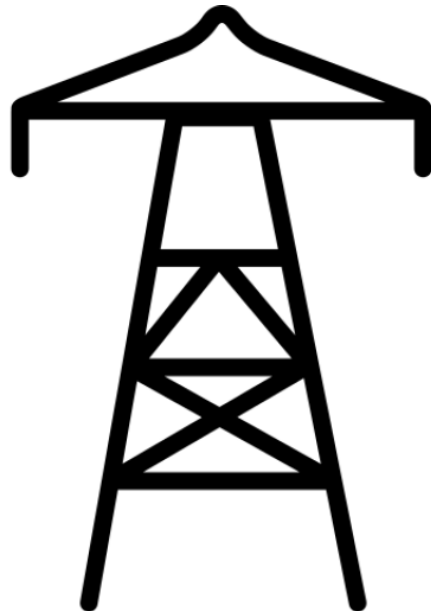
Data from: **Simulating nutrient release from parental carcasses increases the growth, biomass and genetic diversity of juvenile Atlantic salmon**

McLennan D, Auer S, Anderson G, Reid T, Bassar R, Stewart D, Cauwelier E, Sampayo J, McKelvey S, Nislow K, Armstrong J, Metcalfe N

Date Published: May 31, 2019

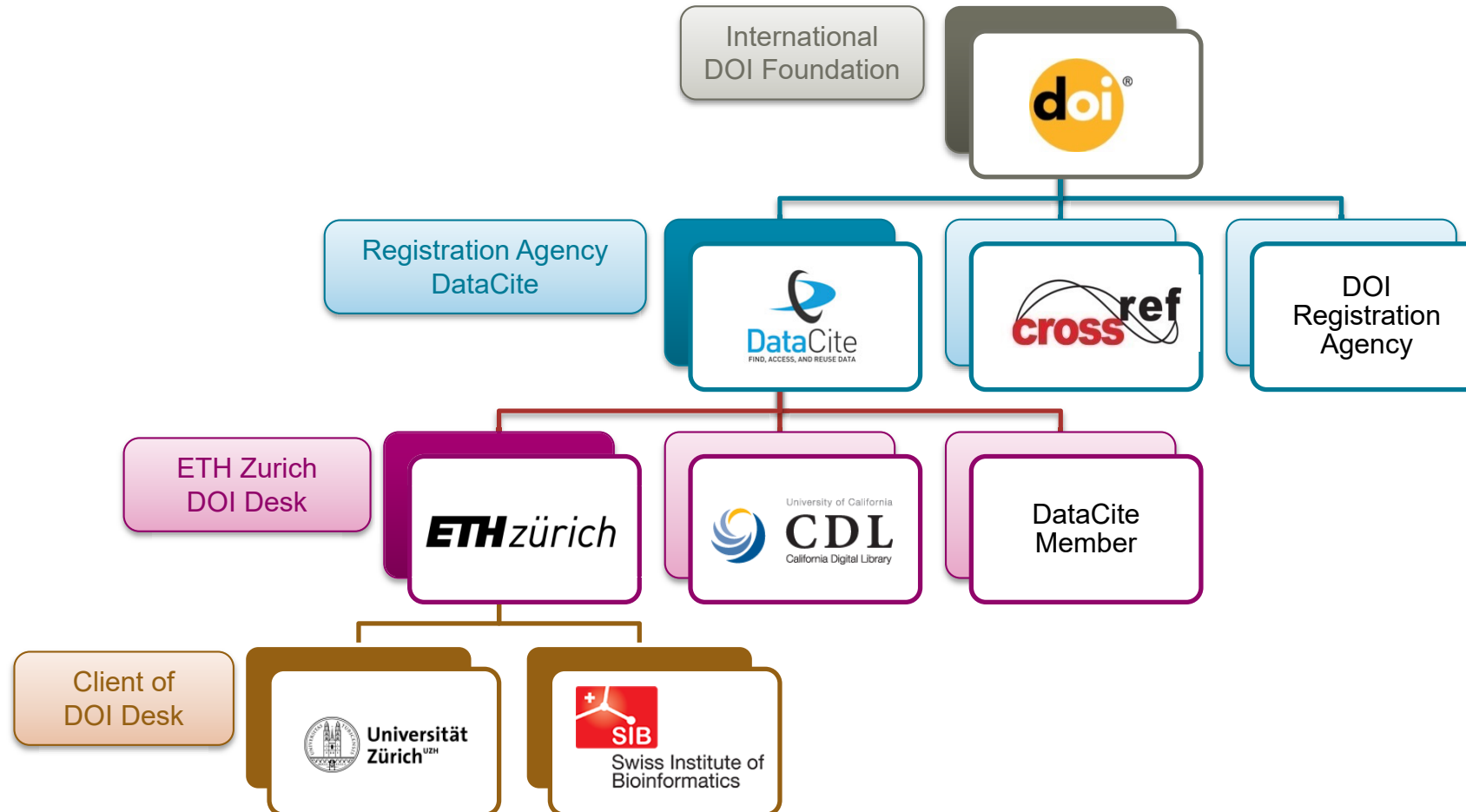
DOI: <https://doi.org/10.5061/dryad.c6v3838>

How to enable and guarantee «persistence»?



Icons by [Freepik](https://www.flaticon.com) from www.flaticon.com

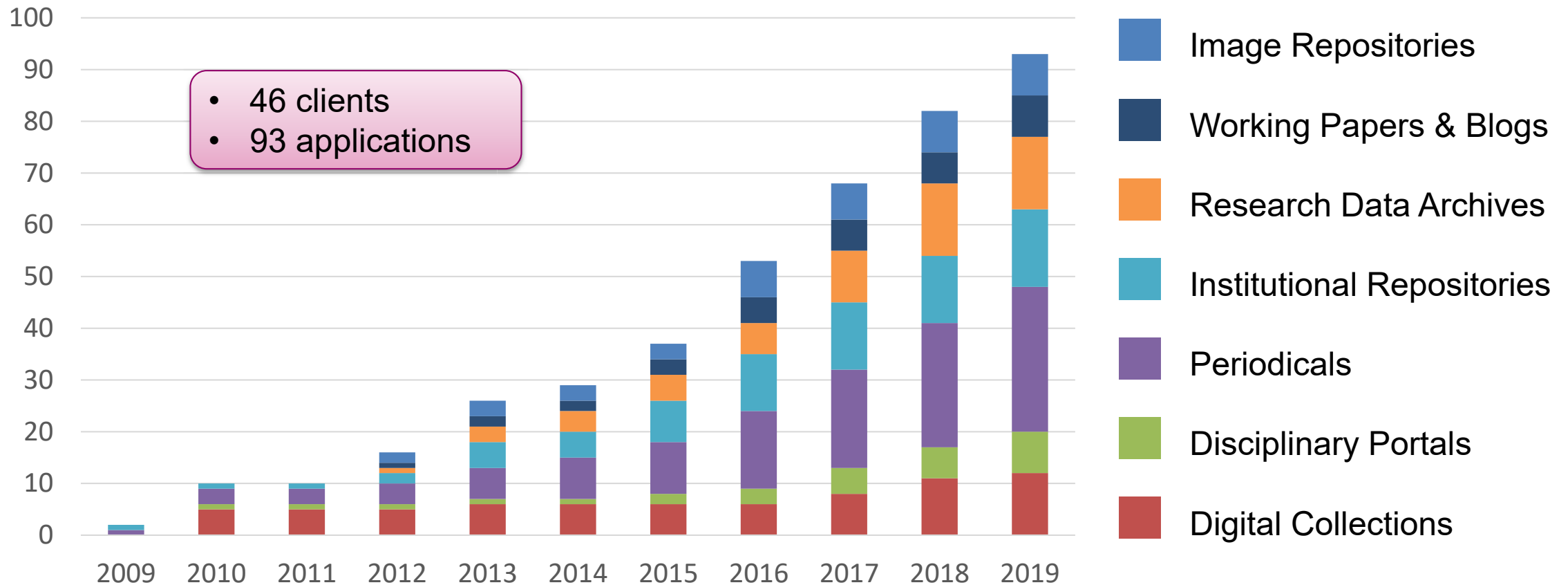
Organisational framework



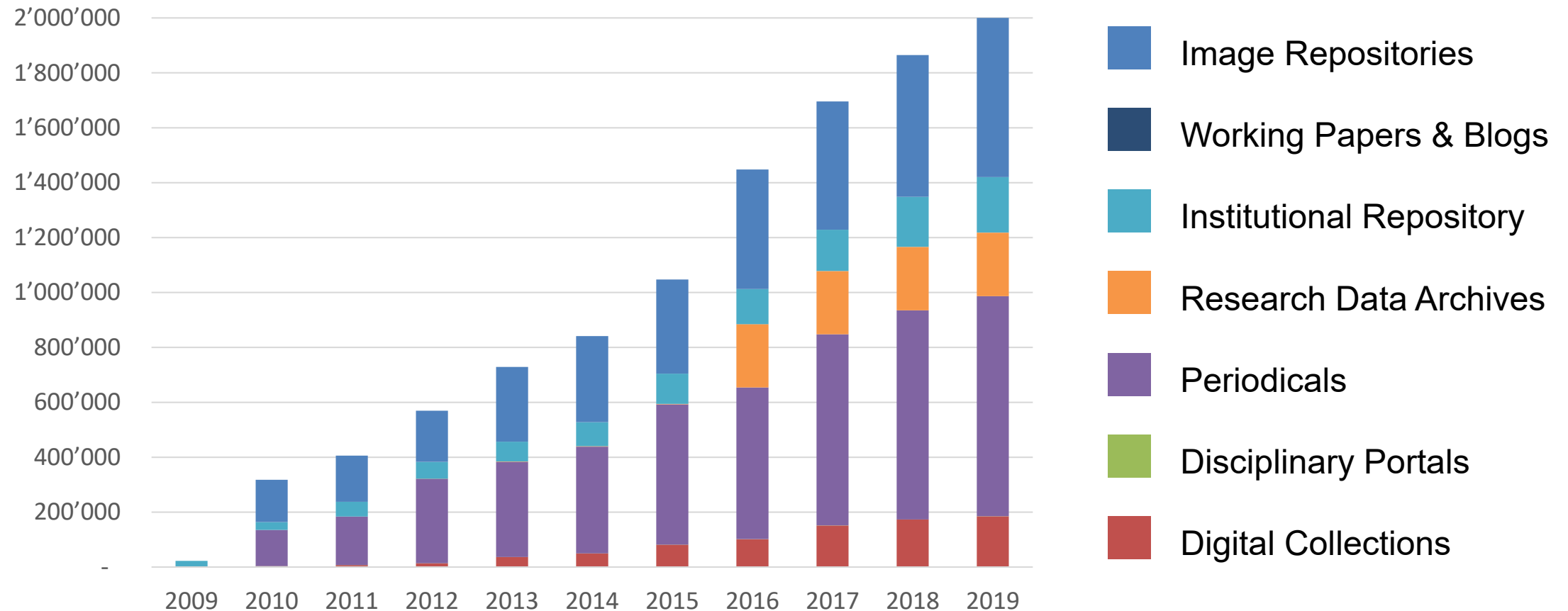
How it all began...



Number of repositories / journals 2009-2019



DOI registrations 2009-2019



Registrations by Members

Registrations by Clients

Registrations by Prefixes

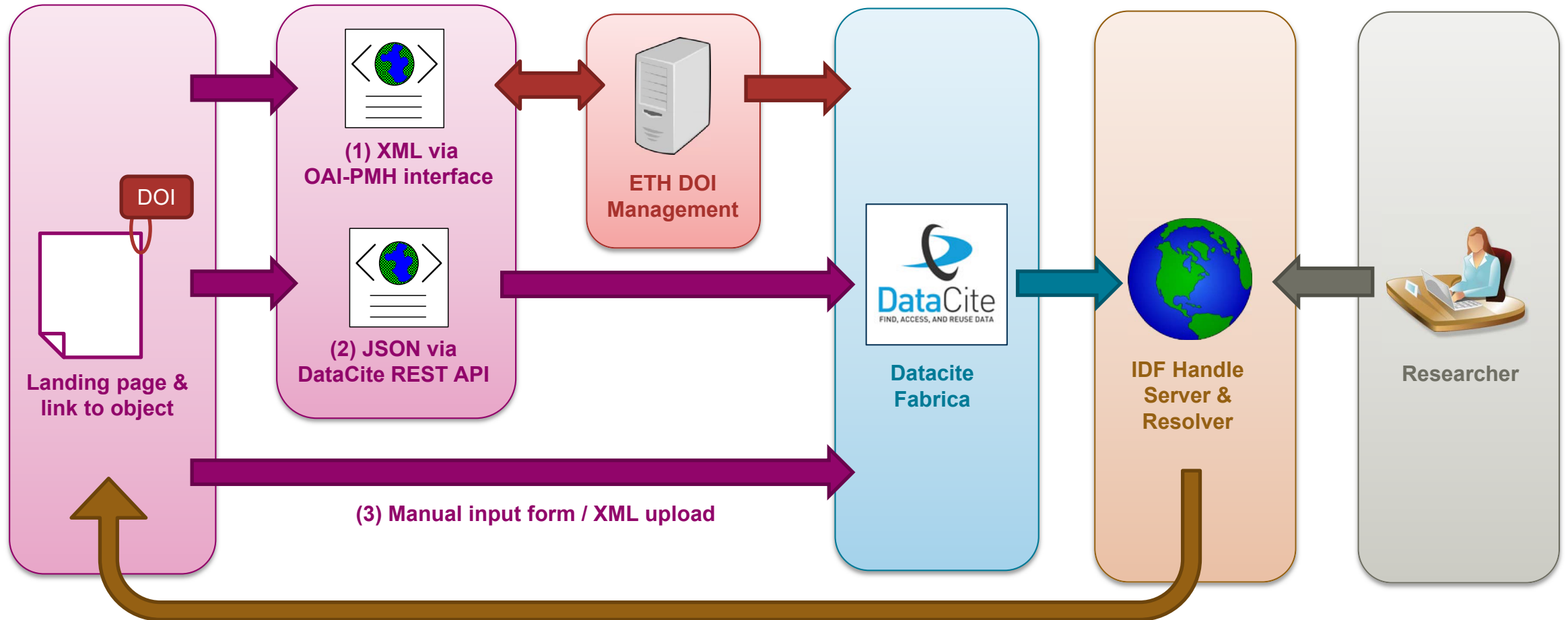
Resolutions by Month

Download CSV

Statistics

ID	Name	DOI Registrations				DOI Metadata	
		Total	2019	2018	This month	Findable	Registered
ETHZ	ETH Zurich	2,024,500	171,232	169,093	5	2,024,499	1
SAGE	SAGE Publishing	1,693,450	7,575	14,992	14	318,239	1,375,211
TIB	German National Library of Science and Technology	1,573,831	101,225	233,289	4	1,177,820	396,011
CERN	CERN - European Organization for Nuclear Research	1,555,780	735,520	274,645	230	1,414,372	141,408
FIGSHARE	figshare	1,400,550	248,837	305,670	258	1,333,733	66,817
RG	ResearchGate	857,976	102,450	124,326	256	710,480	147,496
FAO	FAO	845,060	17,431	262,703	0	845,060	0
CCDC	Cambridge Crystallographic Data Centre	807,017	44,055	61,549	43	803,281	3,736
CROSSREF	Crossref	804,610	804,560	0	90	804,610	0
GESIS	GESIS - Leibniz Institute for the Social Sciences	728,825	38,474	72,311	2	728,119	706
ESTDOI	Tartu University	691,421	11,854	188,754	1	691,416	5
GBIF	Global Biodiversity Information Facility	637,055	103,207	167,951	150	636,957	98
CUL	Columbia University Libraries	586,097	156,965	81,726	0	582,330	3,767
GDCC	The Global Dataverse Community Consortium (GDCC)	493,944	173,926	302,194	87	491,802	2,142

DOI registration workflows



What we have learned so far... Best Practices

DOI Registration Manual



ETH Zurich's DOI Desk is the DOI registration office for Switzerland's university and research sector.

It enables providers of publication services to register DOI names for digital objects, e.g. research reports, dissertations, research data, digitized images etc., on the internet.

ETH Zurich DOI Desk is a service provided by [ETH Library](#), in cooperation with [DataCite](#) and with technical support from [IT Services of ETH Zurich](#).

The Registration Manual explains the requirements for becoming a client of ETH Zurich's DOI Desk.

It gives detailed information on metadata and content-related requirements, as well as the technical process for registering DOIs.

Table of Contents

- [Organisational Requirements](#)
- [DOI Guidelines & Best Practices](#)
- [DOI Registration Process](#)
- [DOI Tools & Services](#)

<https://documentation.library.ethz.ch/display/DOID>

▼ DOI Guidelines & Best Practices

- [Digital Object Identifiers \(DOIs\)](#)
- [Access restrictions](#)
- [Copyright](#)
- [Data citation](#)
- [Data formats](#)
- [Data persistence](#)
- [Display guidelines](#)
- [Dynamic Datasets](#)
- [Granularity](#)
- [Landing pages](#)
- [Metadata](#)
- [Object types](#)
- [Quality of content](#)
- [Storage system](#)
- [Syntax](#)
- [Versioning](#)

Services and tools based on DOIs

DOI Tools & Services	
Service	Description
DataCite Search	Search portal containing all DOIs registered with DataCite.
DataCite Statistics	Portal displaying statistics about DOIs registered with DataCite.
DataCite OAI-PMH Provider	The DataCite OAI-PMH Provider exposes metadata stored in the DataCite Metadata Store (MDS) using the Open Archives Initiative Protocol for Metadata Harvesting (OAI-PMH).
DOI Citation Formatter	Choose from more than 500 different citation formats in 45 different languages and receive a formatted citation for any DOI.
DOI Content Negotiation	DOI registration agencies such as CrossRef, DataCite and mEDRA collect bibliographic metadata about the works they link to. This metadata can be retrieved from a DOI resolver too, using content negotiation to request a particular representation of the metadata.
DOI Name Resolver Button	Adding the DOI Name Resolver Button to your web browser Links/Shortcuts Bar will permit you to resolve a DOI that appears on a web page by highlighting it, and clicking on the button. Or, click on the button to display a text box into which you can type or paste a DOI name to resolve.
doi2bib	Give us a DOI and we will do our best to get you the BibTeX entry.
ScholarXplorer	ScholarXplorer populates and provides access to a graph of links between dataset and literature objects and dataset and dataset objects. The graph is openly accessible (CC-0) via REST APIs.
ShortDOI service	Creates shortcuts to DOI names. This can be important in situations where space is limited. For example the short form of the DOI http://doi.org/10.3929/ethz-a-010010483 is http://doi.org/sci . A benefit of the Short DOI service is that only one ShortDOI is created for each DOI name and the ShortDOI returns exactly the same results as the DOI name.

What's next?

- Finish migration of clients to **DataCite Fabrica** for manual DOI registration
 - Help clients switch to DataCite **REST API** for automatic registration
 - Implement new DataCite Membership Model and Fee Structure
- Subscribe to our newsletter: www.library.ethz.ch/doi-desk



Thank you for your attention