

Atlas of Switzerland

Report

Author(s):

Sieber, René

Publication date:

2019-07-15

Permanent link:

<https://doi.org/10.3929/ethz-b-000371965>

Rights / license:

In Copyright - Non-Commercial Use Permitted

Originally published in:

Cartographic Publication Series 21

Atlas of Switzerland

by René Sieber, Institute of Cartography and Geoinformation, ETH Zurich

The Atlas of Switzerland (AoS) is mandated by law by the Swiss Federation to visualise spatially distributed topics from different fields, such as Socio-Economy, Ecology, Traffic, and Energy, in an ongoing long-term project. Since its creation in 1961, the Swiss National Atlas has offered cartographically sound maps in combination with additional information to allow the general public to explore visible and hidden structures and processes.

The first printed version, with over 600 maps was produced and published until 1997. From 2000 until 2010, three interactive versions of the AoS were released on CD-ROM/DVD. The third version, contained about 2000 maps with additional time series in 2D maps and 3D mode (block diagrams, prism maps, and panoramic views). It offered a multitude of tools and map functions, including a sky tool, terrain analysis tools, data and map comparison tools, smart legends, and much more. The interactive AoS series was a big success: overall, more than 25,000 copies were distributed during its life span.

Online Version

In 2016, a new generation of the Swiss National Atlas was launched. The “Atlas of Switzerland – online”, this focuses on real-time 3D visualisation of geographic data by means of a virtual globe. The basic idea of the 3D-based concept is to seamlessly combine 2D and 3D by allowing the user to choose a conventional 2D map view, but also to detect additional information in a 3D map view. Within this 3D environment, new rules, interactive methods and user-friendly tools for 3D navigation in space and time, map graphics and layer handling, as well as explorative analysis have been developed. Concerning topics and map views, a collection of classical map themes such as Geology, Soil, Population, and Language can be selected. But two groups of maps make the “AoS – online” really special: 1) Door-Opener topics (e.g. Swiss Records, Chocolate Factories and Beer Breweries), and 2) typical 3D map topics (Cable Cars, Flight Trajectories and Ice Volumes).

Between 2016 and 2019, the “AoS – online” has been downloaded more than 20,000 times. This desktop application is updated continuously and is available for free: atlasofswitzerland.ch/downloads

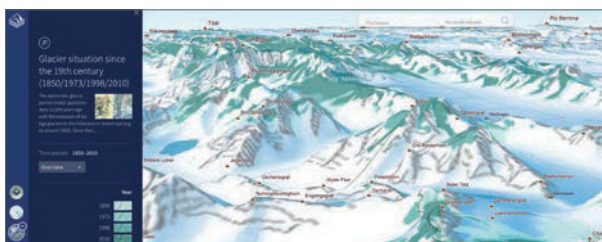
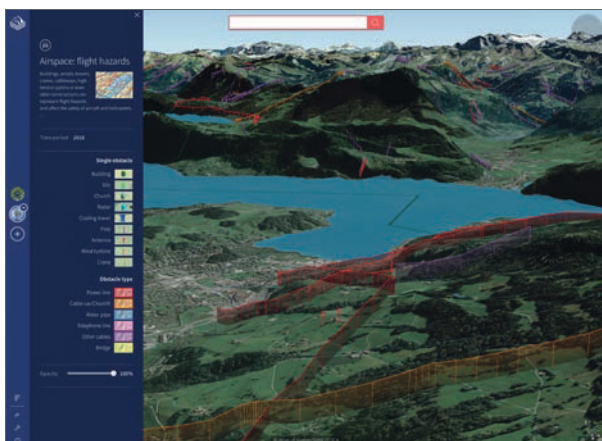


Figure left: Layer combination of glaciers since 18th century (green tones) and last glacier maximum (white).



Flight obstacles visualised as 3D objects and curtains (region of Lake Lucerne).



The population of Swiss communities by age, distributed according to density (Zurich and surroundings).