


# Gulf of Alaska ice-marginal lake area change over the Landsat record and potential physical controls

**Journal Article****Author(s):**

Field, Hannah R.; Armstrong, William H.; [Huss, Matthias](#) 

**Publication date:**

2021-07-15

**Permanent link:**

<https://doi.org/10.3929/ethz-b-000498482>

**Rights / license:**

[Creative Commons Attribution 4.0 International](#)

**Originally published in:**

The Cryosphere 15(7), <https://doi.org/10.5194/tc-15-3255-2021>



# Gulf of Alaska ice-marginal lake area change over the Landsat record and potential physical controls

Hannah R. Field<sup>1,2</sup>, William H. Armstrong<sup>1</sup>, and Matthias Huss<sup>3,4,5</sup>

<sup>1</sup>Department of Geological and Environmental Sciences, Appalachian State University, Boone, NC 28607, USA

<sup>2</sup>School of Earth Sciences, The Ohio State University, Columbus, OH 43210, USA

<sup>3</sup>Laboratory of Hydraulics, Hydrology and Glaciology (VAW), ETH Zurich, Zurich, Switzerland

<sup>4</sup>Swiss Federal Institute for Forest, Snow and Landscape Research (WSL), Birmensdorf, Switzerland

<sup>5</sup>Department of Geosciences, University of Fribourg, Fribourg, Switzerland

**Correspondence:** William H. Armstrong (armstrongwh@appstate.edu)

Received: 17 December 2020 – Discussion started: 18 January 2021

Revised: 17 May 2021 – Accepted: 9 June 2021 – Published: 15 July 2021

**Abstract.** Lakes in contact with glacier margins can impact glacier evolution as well as the downstream biophysical systems, flood hazard, and water resources. Recent work suggests positive feedbacks between glacier wastage and ice-marginal lake evolution, although precise physical controls are not well understood. Here, we quantify ice-marginal lake area change in understudied northwestern North America from 1984–2018 and investigate climatic, topographic, and glaciological influences on lake area change. We delineate time series of sampled lake perimeters ( $n = 107$  lakes) and find that regional lake area has increased 58 % in aggregate, with individual proglacial lakes growing by  $1.28 \text{ km}^2$  (125 %) and ice-dammed lakes shrinking by  $0.04 \text{ km}^2$  (−15 %) on average. A statistical investigation of climate reanalysis data suggests that changes in summer temperature and winter precipitation exert minimal direct influence on lake area change. Utilizing existing datasets of observed and modeled glacial characteristics, we find that large, wide glaciers with thick lake-adjacent ice are associated with the fastest rate of lake area change, particularly where they have been undergoing rapid mass loss in recent times. We observe a dichotomy in which large, low-elevation coastal proglacial lakes have changed most in absolute terms, while small, interior lakes at high elevation have changed most in relative terms. Generally, the fastest-changing lakes have not experienced the most dramatic temperature or precipitation change, nor are they associated with the highest rates of glacier mass loss. Our work suggests that, while climatic and glaciological factors must play some role in determining lake

area change, the influence of a lake's specific geometry and topographic setting overrides these external controls.

## 1 Introduction

The development and evolution of ice-marginal lakes (both proglacial and ice-dammed lakes) may have implications for both upstream glacier systems and downstream fluvial environments (Baker et al., 2016; Otto, 2019; Tweed and Carrivick, 2015). The formation and growth of a proglacial lake (a lake that forms downstream of a glacier terminus) marks a fundamental transition in alpine landscapes, with the intervening lake modifying transport of water, sediment, and nutrients to the downstream river and altering mass loss and dynamics of the upstream glacier (Baker et al., 2016; Bogen et al., 2015; Dorava and Milner, 2000; Jacquet et al., 2017; Ratajczak et al., 2018). Additionally, the presence of ice-dammed lakes (lakes dammed by a glacier that often form in tributary valleys or at the glacier margin) enables glacial outburst floods (GLOFs) that contribute to short-term changes in downstream geomorphologic and hydrologic dynamics and may pose a serious hazard to downstream communities (Carrivick and Tweed, 2016; Roberts et al., 2003; Tweed and Russell, 1999). The response of ice-marginal lakes, in terms of both number and size, to climate change is an important issue for alpine environments globally because of these inter-system links (Stokes et al., 2007; Zemp et al., 2015). Despite the critical role of these lakes, little is known about phys-

ical controls on ice-marginal lake formation and evolution (Falatkova et al., 2019; Magnin et al., 2020). To address this knowledge gap, we investigate trends in ice-marginal lake area change across northwestern North America, a relatively unstudied region, over the satellite record and explore physical controls on observed behavior.

Globally, proglacial lakes have expanded and increased in number over the 20th–21st centuries (Shugar et al., 2020; Stokes et al., 2007; Tweed and Carrivick, 2015; Wang et al., 2015). Iceland has experienced an increase in the number of proglacial lakes, with individual lakes increasing in area by up to 18 km<sup>2</sup> (Canas et al., 2015; Tweed and Carrivick, 2015). Across the Hindu Kush Himalayas, glacial lake change has been variable and appears to be indirectly linked to glacier change (Gardelle et al., 2011). Glacial lakes in the central and eastern Himalayas have significantly expanded in both number and size over the past 30–40 years, which coincides with glacier retreat and precipitation changes in those regions (Bajracharya et al., 2015; Gardelle et al., 2011; Khadka et al., 2018; Shukla et al., 2018; Treichler et al., 2019; Wang et al., 2015; Zhang et al., 2019). In the western Himalayas where glaciers are experiencing less retreat, lakes appear to be shrinking (Gardelle et al., 2011). In the southern Andes, glacier lakes (including some lakes not in direct contact with glaciers) appear to be primarily growing in number, with smaller cumulative area increase (7 %) than seen elsewhere (Wilson et al., 2018). Less is known about ice-marginal lakes in northwestern North America, a region that is experiencing increasing air temperatures and changing precipitation that has generally resulted in negative glacier mass balance (Larsen et al., 2015) and loss of glacier coverage (Arendt et al., 2009). Wolfe et al. (2014) indicate that Alaska glacier-dammed lakes have become less common over 1971–2008. The total number of ice-dammed lakes decreased by 23 %, though 34 % of lakes existing in 2008 were newly formed (Wolfe et al., 2014). We expand upon the work of Wolfe et al. (2014) by assessing change in proglacial lakes in addition to ice-dammed lakes, characterizing area change in addition to quantity, and probing the underlying physical controls.

The development and evolution of an ice-marginal lake can impact its associated glacier. Theoretically, the presence of proglacial lakes can influence glacier ablation through thermal and mechanical processes (Tweed and Carrivick, 2015). Observations of the glaciological impact of lake formation are mixed, with some studies finding increased rates of mass loss (King et al., 2019) and speed (Tsutaki et al., 2011; Watson et al., 2020) on lake-terminating glaciers, with support from non-numerical modeling (Sutherland et al., 2020), though other observational studies suggest glacier-averaged mass balance is minimally affected by the presence of a proglacial lake (Larsen et al., 2015). The presence of a lake at the terminus of a glacier may allow thermally induced subaqueous melt (e.g., Robinson and Matthaei, 2007) and may also increase glacier mass loss by enabling increased

calving (e.g., Chernos et al., 2016) and/or by modulating subglacial hydraulics (Tsutaki et al., 2011). However, despite their similarity to marine-terminating (tidewater) glaciers, lake-terminating glaciers likely calve less vigorously and experience less subaqueous melt than their tidewater counterparts due to shallower and colder water near the terminus and the lack of upwelling meltwater plumes (Truffer and Motyka, 2016).

Above, we discuss the impacts of ice-marginal lake change on the lakes' associated glacier, but this is a two-way process, with glacier change also impacting their associated lakes. Globally, the extensive retreat of glaciers has been associated with the increase in the number and size of proglacial lakes (Otto, 2019; Stokes et al., 2007). However, the exact mechanisms driving lake area change and its sensitivity to climate change are not well understood. Both glacier processes (e.g., sensitivity of glacier mass balance to temperature change, glacier response time) and local subglacial topography likely contribute to how lakes change over time and space (Debnath et al., 2018; Otto, 2019; Song et al., 2017), and these factors themselves may interact and/or change over time. Previous work suggests that the main factor in lake development is the presence of glacial overdeepenings and confining topography (Buckel et al., 2018; Cook and Swift, 2012; Fariás-Barahona et al., 2020; Haeberli et al., 2016; Otto, 2019). Changing air temperature and precipitation also play an important role in proglacial lake area change by influencing glacial thinning, retreat, and meltwater runoff (Debnath et al., 2018; Treichler et al., 2019), though Brun et al. (2020), focusing on closed basins not in direct contact with glaciers, found minimal influence of glacier mass loss on Tibetan lake volume change. In Alaska, glacier thinning and tributary disconnection alter basin morphology, and the distribution of ice-dammed lakes shifted to higher elevation over the late 20th century (Wolfe et al., 2014). Glaciological factors such as debris cover and regional glacier mass loss may also influence proglacial lake evolution (Song et al., 2017).

Ice-marginal lakes can impact downstream ecosystems by altering sediment fluxes, geochemical cycling, and downstream geomorphological characteristics, among other impacts (Baker et al., 2016; Dorava and Milner, 2000). The reduced suspended sediment load in glacier-fed streams and rivers downstream from proglacial lakes enhances habitats for aquatic organisms (Bogen et al., 2015; Dorava and Milner, 2000). Stream temperature is higher and less time variable downstream from lakes, and this thermal regulation is also beneficial for many aquatic species (Dorava and Milner, 2000; Fellman et al., 2014). Proglacial lakes may also stabilize downstream channel morphology, contributing increased bank stability (Dorava and Milner, 2000). Conversely, ice-dammed lakes may increase the rate of channel migration and contribute to more transient channel geometry due to outburst flooding (Jacquet et al., 2017). Understanding the development and evolution of these lakes is critical due to their influence on both local and regional environments.

The complicated interrelations of geomorphic, climatic, and glaciologic influences on ice-marginal lake area change must be untangled to develop a better understanding of the main drivers of ice-marginal lake area dynamics. A conceptual model for physical controls on both proglacial and ice-dammed lake behavior is necessary for predicting lake evolution in a warming world, highlighting which lakes may be most sensitive to perturbations and assessing potential impacts on their adjacent biophysical systems. This study seeks to narrow this knowledge gap in two ways. First, we document what is happening – how are proglacial lakes changing across northwestern North America? What are the rates and spatial patterns of change? Secondly, we investigate why this is happening – what are the dominant physical controls on ice-marginal lake behavior? Do these controls vary across space? Explicitly, we employ statistical analyses to explore climatic, glaciological, and topographic associations with ice-marginal lake area change. By answering the questions above, we hope to inform our understanding of this critical landscape interface to enhance prediction of how upstream and downstream systems will evolve in a warming world.

## 2 Study area, datasets, and data pre-processing

Below, we introduce the study region and then describe our climatic, glaciologic, and geomorphic data sources for statistical analyses employed to investigate drivers of lake area change. In Sect. 2.2–2.4, we describe the datasets used to evaluate potential control variables for ice-marginal lake area change (Table 1). Later in the paper, we use the terms “environmental variables” or “predictor variables” to collectively describe these climatic, glaciologic, and topographic descriptors of each lake’s setting.

### 2.1 Study area

We study a sampling of ice-marginal lakes ( $n = 107$ ) that span 48–68° N, 116–154° W, covering much of northwest North America along the Gulf of Alaska and into the interior. The lakes are found from the Brooks Range to the Washington Cascades and Canadian Rockies and are located in the states and provinces of Alaska, Washington, Yukon, British Columbia, and Alberta (Fig. 1). The region is extensively glacierized (101 700 km<sup>2</sup>) and contains 14 % of the world’s glaciers and ice caps (GICs) by area (Randolph Glacier Inventory regions 01 and 02; Gardner et al., 2013). Glaciers across northwestern North America are losing mass faster than in any other region (−73 Gt a<sup>−1</sup> or −0.85 m w.e. a<sup>−1</sup> for Alaska; −12 Gt a<sup>−1</sup> or −0.83 m w.e. a<sup>−1</sup> for western Canada and the continental USA; Zemp et al., 2019) and account for 26 % of GIC contributions to sea level rise, despite comprising only 14 % of global GIC volume (Zemp et al., 2019). Despite this general picture of glacier wastage, significant spa-

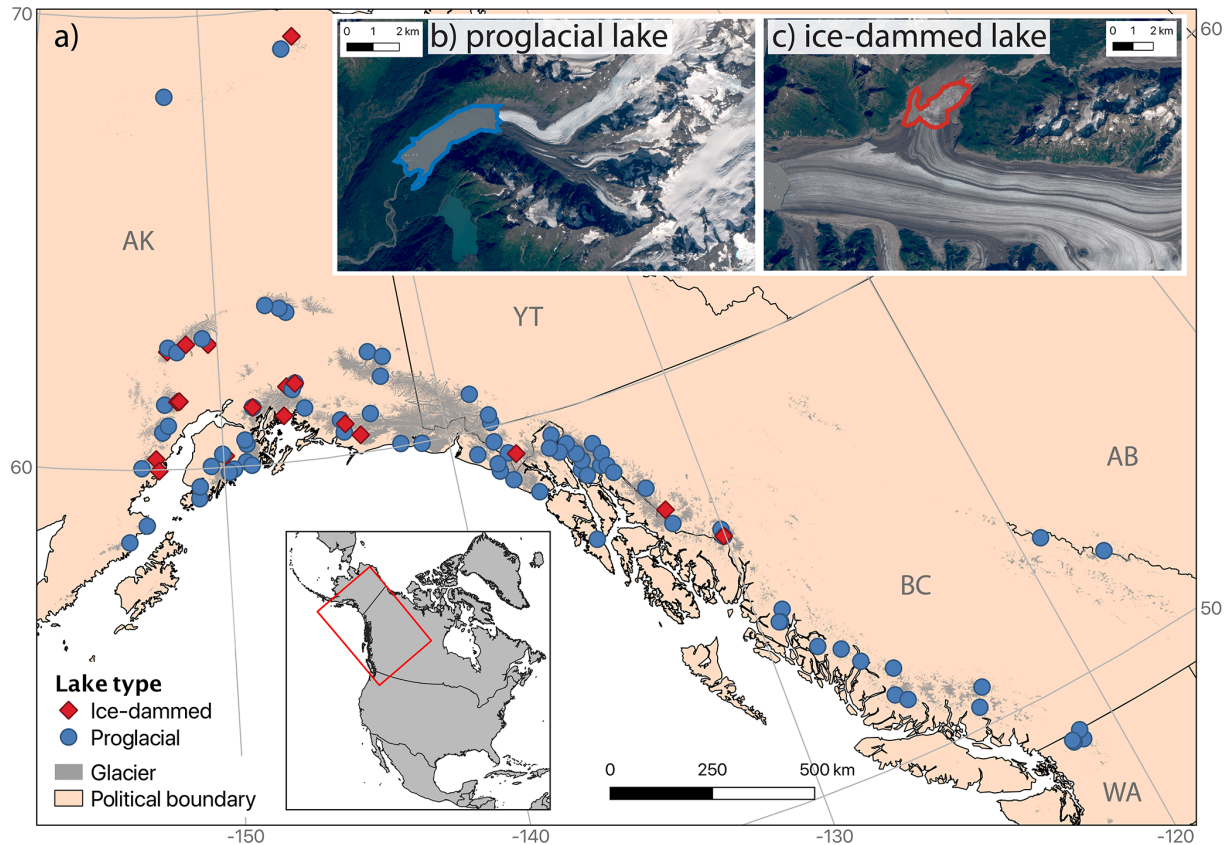
tial and temporal variability exists in the pattern of glacier mass loss (Menounos et al., 2019).

### 2.2 Climatic variables

We retrieve climate data from the Scenarios Network for Alaska + Arctic Planning (SNAP) database (accessible at <http://ckan.snap.uaf.edu/dataset>, last access: 13 July 2021). The database includes 2 km × 2 km resolution gridded climate data downscaled from the Climatic Research Unit Time-Series (CRU TS3.10) and Parameter-elevation Regressions on Independent Slopes Model (PRISM) datasets (Daly et al., 1997; Harris et al., 2014). SNAP provides access to historical air temperature estimations including seasonal, annual, and decadal monthly means. We retrieve decadal summer air temperature and winter precipitation data (Table 1; Fig. S1a and b), which are the quantities most relevant to non-equatorial glacier mass balance (Cuffey and Paterson, 2010). The summer temperature products have average uncertainties of ±0.3 °C, with a 0.1 °C cold bias (Bieniek et al., 2016). Precipitation data include estimates of monthly totals and means of annual, seasonal, and decadal monthly means of total precipitation. The winter precipitation estimates have an uncertainty of ±4.1 mm d<sup>−1</sup>, with a −0.9 mm d<sup>−1</sup> dry bias (Bieniek et al., 2016). These data do not subdivide precipitation into rain and snow. We investigated the influence of 10-year averages of winter (December, January, and February) precipitation, summer (June, July, and August) air temperature, and the changes in these quantities between the 2000–2009 decade and the 1960–1969 decade (Fig. S1c–d). We utilize the 1960s decade to consider the longest-term comparison allowed by the SNAP dataset. We manually measure the shortest distance between each lake and a simplified representation of the Gulf of Alaska coastline (Fig. S2) to provide a metric for a lake’s continentality.

### 2.3 Glaciologic variables

Glaciologic variables may be subdivided into variables that describe glacier geometry and those that describe glacier mass balance. To investigate the influence of geometric attributes of each lake’s adjacent glacier, we use the Randolph Glacier Inventory (RGI) version 6.0, a globally complete, frozen-in-time snapshot of glacier outlines produced to provide an inventory of glaciers at the start of the 21st century (Pfeffer et al., 2014; RGI Consortium, 2017). The RGI also provides glacier geometrical characteristics, including glacier area, elevation, mean surface slope, flow direction, and the length of the longest flow line. Additionally, we use information on glacier ice thickness based on the Farinotti et al. (2019a) consensus ice thickness product. This dataset relies on glacier surface characteristics of RGI glaciers to produce predicted ice thickness distributions from an ensemble of up to five models (Farinotti et al., 2019a). The ensemble approach produces ice thickness estimates that are more ro-



**Figure 1.** (a) Map of study region showing sampled proglacial (blue circles) and ice-dammed (red diamonds) lakes. Glacier extent is shown as gray fill (RGI Consortium, 2017), and black lines indicate political boundaries. Two-letter state and province abbreviations are given in gray text. The inset map shows the location of the study area (red box) in northwestern North America. Examples are shown of (b) a proglacial lake (unnamed lake downstream from Twentymile Glacier; 60.94° N, 148.78° W) and (c) an ice-dammed lake (Van Cleve Lake dammed by Miles Glacier; 60.70° N, 144.41° W). Background imagery in (b) and (c) is from Landsat 8.

**Table 1.** Climatic, glaciologic, and topographic datasets and respective variables retrieved and used in our analyses.

Source	Variables retrieved
Scenarios Network for Alaska + Arctic Planning (SNAP)	Summer air temperature (1960s, 1980s, 2000s – June, July, August decadal average), winter precipitation (1960s, 1980s, 2000s – December, January, February decadal average)
USGS GTOPO30	Elevation
Randolph Glacier Inventory (RGI v6.0)	Glacier geometry (glacier area; minimum, maximum, and median elevation of glacier; mean slope of glacier surface; orientation of glacier surface; length of longest flow line on glacier)
Farinotti et al. (2019a) ice thickness product	Mean, maximum, and standard deviation of ice thickness across glacier; glacier volume; near-terminal ice thickness
Huss and Hock (2015) mass balance dataset	Mean annual mass balance (1980s, 1990s, 2000s, 2010s), summed balance 1980s–2010s, terminal balance, winter accumulation, glacier response time, mass balance gradient

bust and accurate than any individual model, with 50 % of all modeled mean ice thickness agreeing with observations to within +30%/–20 % (Farinotti et al., 2019a). Despite this overall agreement, local deviations up to 2 times the observed ice thickness do exist (Farinotti et al., 2019a). We further process these data to compute metrics such as the mean, median,

and maximum ice thickness of each glacier, as well as its total volume.

To assess the influence of glacier mass balance on ice-marginal lake area change, we use data from Huss and Hock (2015), who estimated mass balance distribution for individual RGI 6.0 glaciers for the period 1980–2016 based on the

Global Glacier Evolution Model (GloGEM). GloGEM employs a calibrated temperature-index model driven by ERA-Interim reanalysis climate data. Huss and Hock (2015) report that 66 % of modeled net annual mass balance estimates agree with observations to within  $\pm 0.25$  m w.e.  $a^{-1}$ . For the estimates that fall outside of this range, smaller glaciers are more prone to mass balance overestimates than large glaciers (Huss and Hock, 2015). From this dataset, we investigate variables that characterize annual mass balance, cumulative mass balance, near-terminal mass balance, glacier response time, and mass balance gradient. Glacier response ( $T$ ) time has been determined based on the strongly simplified context proposed by Jóhannesson et al. (1989) based on maximum ice thickness and mass balance at the glacier terminus as  $T = -H_{\max}/b_t$ , where  $H_{\max}$  is the maximum thickness of the glacier and  $b_t$  is the mass balance of the lowermost elevation band (10 m) of the glacier (Jóhannesson et al., 1989; Huss and Hock, 2015). Mass balance gradients have been determined by a linear fit with elevation through computed mass balances in the ablation area for each year individually as an average over the entire study period.

## 2.4 Topographic variables

We extract surface elevation data from the US Geological Survey (USGS) GTOPO30, a 1 km resolution global digital elevation model (Danielson and Gesch, 2011). For the United States, GTOPO30 utilizes the USGS digital elevation models, and in Canada it utilizes the Digital Terrain Elevation Data and the Digital Chart of the World datasets. The relatively coarse resolution of GTOPO30 is sufficient for the purpose of providing a general estimate of lake surface elevation.

For each lake-associated glacier, we extract glacier width as well as the width of its confining valley in the terminus region from Google Earth imagery. The valley width is estimated from ridge-to-ridge measurement, which we manually identify using an elevation overlay. Near-terminal glacier width is measured at the terminus of the glacier in contact with the proglacial lake. For ice-dammed lakes, valley width is estimated as the ridge-to-ridge distance transverse to the dammed valley axis. Near-terminal glacier width in ice-dammed settings is approximated as the straight-line length of the glacier–lake interface.

In the previous section we described glacier-wide attributes that may be associated with lake area change. However, it is plausible that glacier attributes in the region immediately bordering an ice-marginal lake may be more important for the lake's evolution. To assess the influence of local ice thickness, we extract these data for the lake-adjacent region of the glacier associated with each sample lake (Fig. 2). Ice thickness in the lake-adjacent area better reflects the extent to which a subglacial overdeepening exists that can allow for further lake growth. We delineate these lake-adjacent regions using the RGI 6.0 outline and recent satellite data. We

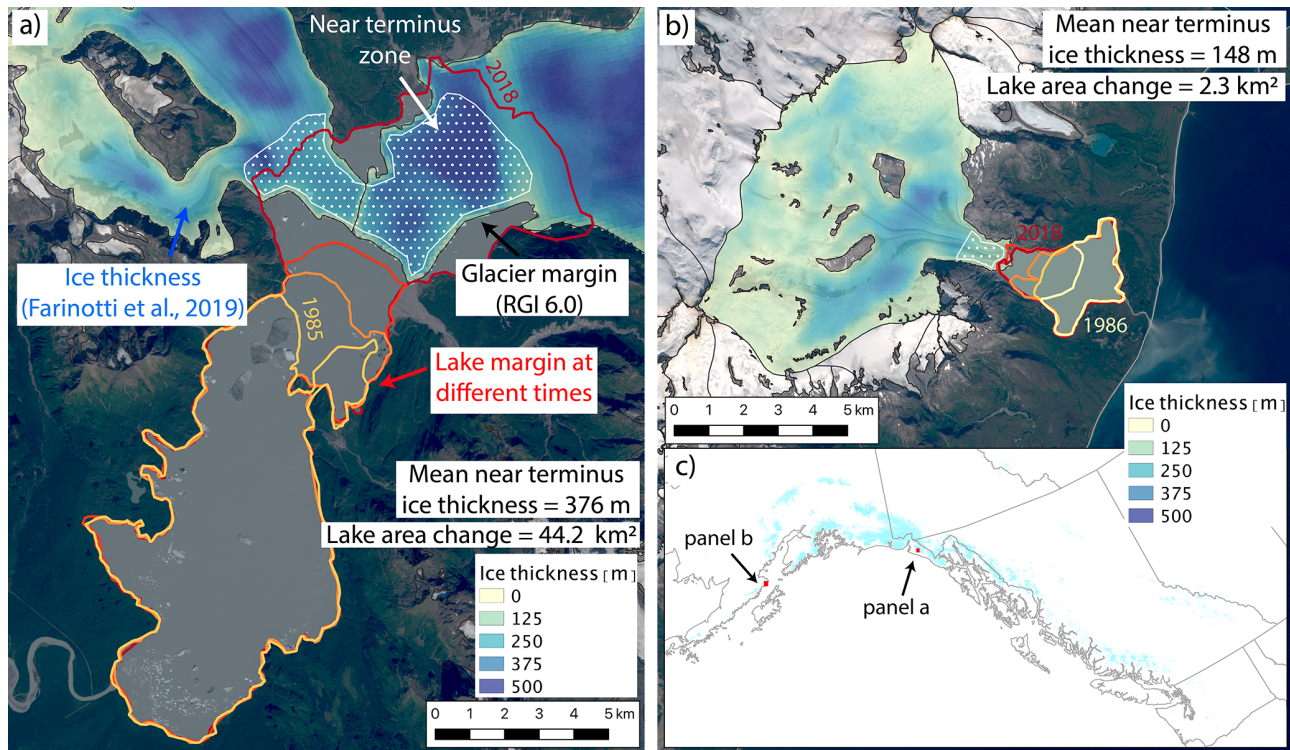
then extract the Farinotti et al. (2019a) ice thickness in this zone and compute its statistics. For glaciers associated with proglacial lakes, we define the “near-terminal zone” as the terminal 20 % of the upstream glacier. For ice-dammed lakes, we define the lake-adjacent region as 10 % of the glacier length up- and down-glacier from the lake–glacier junction. We used a fixed relative area (scaled by glacier area) to ensure uniformity across study sites in our definition of the near-terminus zone.

## 3 Methods

Below we describe the procedure we use for sampling and delineating lakes and follow this with a description of the analyses we perform to investigate physical controls on the evolution of ice-marginal lake area for our sample set.

### 3.1 Lake sampling and delineation

We use the term “ice-marginal lake” to describe any lake that is in direct physical contact with one or more glaciers, regardless of whether it occurs at a terminal or lateral margin and independent of dam type (e.g., bedrock, moraine, glacier ice). We use “proglacial lake” to describe an ice-marginal lake that is immediately downstream from a glacier's terminus. We consider an “ice-dammed lake” to be an ice-marginal lake that is found at a glacier's lateral margin and appears to be impounded by glacier ice. Most of the study lakes remained in contact with a glacier for the entire study period, and we discard lakes that detached from their associated glacier from later statistical analyses (described below). Due to the time-consuming nature of high-accuracy manual lake digitization, we do not attempt to delineate every single ice-marginal lake in the study area but rather sample an evenly distributed subset of lakes to provide an estimate of regional lake area change behavior. We utilize a gridded map and select a similar number of lakes in each grid cell to avoid biased site selection and clustering. A subset of lakes ( $n = 40$ ) is sampled from a historical catalog of ice-marginal lakes in Alaska (Post and Mayo, 1971) to avoid undersampling lakes that disappeared and could not be observed in recent satellite imagery. Our dataset for area change analysis includes 107 ice-marginal lakes (88 proglacial and 19 ice-dammed). For statistical analyses, this number is decreased to 73 proglacial lakes and 14 ice-dammed lakes (87 ice-marginal lakes in total) due to the discarded lakes that detached from their associated glacier during the study period. Of the 40 lakes sampled from Post and Mayo (1971), 19 lakes were ice-dammed, and the rest of our sample set are proglacial lakes of uncategorized dam material (e.g., moraine, bedrock, or landslide). Our study lakes are generally relatively small, with a median (mean) initial area of  $0.78$  km<sup>2</sup> ( $4.06$  km<sup>2</sup>). Excluding lakes that appeared during the study period, the median (mean) ini-



**Figure 2.** Illustration of the potential importance of the near-terminus topography. **(a)** Time-varying lake margins (red) and estimated ice thickness distribution (blue) at Harlequin Lake below Yakutat Glacier, Alaska ( $59.48^{\circ}$  N,  $138.90^{\circ}$  W). Zone for calculating near-terminus ice thickness is shown in stippled white, and the RGI 6.0 glacier margin is shown as a black line. This specific glacier–lake system is discussed in Trüssel et al. (2015). **(b)** Same as in **(a)** but for an unnamed lake below Fourpeaked Glacier, Alaska ( $58.77^{\circ}$  N,  $153.45^{\circ}$  W). **(c)** Overview map showing locations of panels **(a)** and **(b)**. Ice thickness data are from Farinotti et al. (2019a). Glacier outlines are from RGI Consortium (2017). Background imagery is from Landsat 8.

tial area is  $1.08 \text{ km}^2$  ( $4.42 \text{ km}^2$ ), with an interquartile range of  $0.26$  to  $3.66 \text{ km}^2$ .

We accessed the Landsat 5–8 record using Google Earth Engine to estimate lake area change between 1984–2018 by utilizing the Google Earth Digitisation Tool (GEEDiT) (Lea, 2018). GEEDiT was initially developed by Lea (2018) for delineating glacier termini; however we adapted it to manually digitize lake boundaries from pan-sharpened true-color optical imagery (Fig. 1b, c). Adapting GEEDiT for this purpose required a post-processing step to close polylines into polygons, which was accomplished using the Shapely package in Python (accessible at <https://github.com/Toblerity/Shapely>, last access: 13 July 2021). Each lake’s margin was manually digitized between four and seven times with intervals of approximately 5–10 years separating images (Table S1) for a total of 540 digitized lake outlines. We exclusively utilize summer imagery (June, July, August) to increase confidence in lake perimeter digitization and to minimize the influence of seasonal cycles on our estimates of lake area change.

### 3.2 Lake area change analysis

We determine absolute lake area change ( $\Delta A$ ) as the simple difference in area between our last and first lake delineations, where a positive area change indicates a growing lake. This simple difference means that our characterization of area change is sensitive to the exact value of lake area at the time of image acquisition. This sensitivity will not produce significant error if interannual and seasonal variations in lake area change are small relative to the long-term trend. However, where short-term variability is large relative to the long-term trend, this single-pair area change metric may be less accurate in estimating the true long-term lake area change. This may make our estimates of ice-dammed lake area change more uncertain because these lakes are susceptible to periodic outburst flooding. We determine relative lake area change as  $\Delta A/A_0$ , where  $A_0$  is the lake’s first observed area and  $\Delta A$  represents the absolute change in lake area over the study period.

Lake area change takes one of two forms: (1) progression along a continuum, such as a small lake growing larger, or (2) a system switch, such as the appearance of a new lake or disconnection of an ice-marginal lake from its associated

glacier. We characterize these styles of lake area change in two distinct ways, as described below.

For lakes moving along a continuum, we observe that there are several different patterns of lake area change over time. We quantify these behaviors by categorizing the area change time series of each lake as linear, exponential, or logarithmic change over the study period. The accuracy of this characterization again assumes that interannual and seasonal variations in lake area are small relative to the long-term trend. This assumption may be problematic for ice-dammed lakes that experience regular outburst flooding resulting in lake drainage followed by a refilling period. Anecdotally, we did not observe any lakes disappearing and then re-appearing in our study sample, and so we assume this source of error is small in our overall analysis. Further, our main conclusions do not rely heavily on this metric, and we present it here merely as a tool to explore varied lake change behavior. In addition to the temporal styles of change described above, we defined stable lakes as those with area change of  $\leq 0.10 \text{ km}^2$ . We use this relatively high stability threshold to produce conservative results that do not classify area change styles unless the signal is large. We interpret linear area change trends to represent steady growth or shrinkage, while exponential trends indicate either accelerating growth or decelerating shrinkage and logarithmic change suggests decelerating growth or accelerating shrinkage over time. We utilize the Ezyfit Toolbox in MATLAB version R2019b in order to determine the best-fitting line type for each lake area change time series. Lakes were categorized as having the growth style with the line fit that explains the highest variance in the data (i.e., highest  $r^2$  value).

The system switches of new lake appearance or lake disconnection represent the first and final stages of ice-marginal lake evolution (Emmer et al., 2020). We record the date of the first image in which the lake either appeared or became detached. We denote lakes that appeared during the study period as “new lakes” in later figures but include them with extant lakes for all analyses. We exclude lakes that detached from their adjacent glacier from our lakes area change analyses and investigation of physical controls because they complicate interpretation, particularly where the lake detached early in the study period. However, we retain these lakes in this inventory to represent the late stages of proglacial lakes in deglaciating environments, and the date of their disconnection may yield meaningful insight. Additionally, we observed that some lakes appeared during the study period. We include these lakes in area change analyses and investigations of physical controls because they represent early proglacial lake growth and all appeared early in our study period.

### 3.3 Correlation testing

We utilize the non-parametric Kendall correlation test to assess the strength and significance of relationships between lake area change (both absolute and relative) and potential

physical control variables. We also employ Kendall correlation to test for statistical relationships between environmental variables. The Kendall test makes no assumption of data normality and is calculated from the rank of data points rather than their actual values, which makes it robust to outliers (Helsel and Hirsch, 2002). Further, the Kendall test does not assume variables are associated linearly, and it can be applied to any monotonic relationship. All of these attributes make the non-parametric Kendall test preferable to parametric tests such as Pearson’s linear correlation test because many of our datasets are non-normally distributed, contain outliers, and exhibit non-linear relationships. We also employ the non-parametric Kendall–Theil robust line (a.k.a. Sen slope) to estimate best-fit lines that are insensitive to outliers (Helsel and Hirsch, 2002). The Kendall–Theil robust line is implemented in MATLAB through a third-party code, available at <https://www.mathworks.com/matlabcentral/fileexchange/34308-theil-sen-estimator> (last access: 13 July 2021). We restrict our statistical analyses to the ice-marginal lakes that remained in contact with their associated glacier(s) throughout the study period ( $n = 87$ ). We implement an alpha level of 0.1 for testing correlation significance. Analyses are performed using MATLAB version R2019b, and we use the corr function to determine both the significance level ( $p$  value) and the Kendall  $\tau$  test statistic. Further, we employed principal component (PC) analysis to reduce data dimensionality and test for correlations between lake area change and PC axis scores.

### 3.4 Principal component analysis procedure and interpretation

In addition to the single-variable correlation tests described in Sect. 3.3, we undertake principal component analysis (PCA) to reduce the dimensionality of the datasets of topographic, climatic, and glaciologic factors, many of which are themselves correlated (see Sect. 4.4 for discussion of covariance). To prevent high-valued environmental variables (e.g., glacier area, which can exceed  $1000 \text{ km}^2$ ) from dominating dataset variance relative to low-valued variables (e.g., mass balance gradient, which is generally 0.1–1 m w.e. per 100 m), we standardize input variables (Table 3) by their minima and maxima to ensure that all variables range from 0 to 1. We then run PCA on the standardized environmental variables using MATLAB’s pca function. We investigate the variance explained by each principal component axis (i.e., “scree plot”) and the input variable loadings onto each axis (Table S2). After determining which principal component axes are most relevant (described below), we correlate the lakes’ principal component scores to lake area change, using the same procedure as that described in Sect. 3.3.



## 4 Results

In this section, we first provide summary statistics of lake area change for the subset of northwestern North America ice-marginal lakes considered in this study, in terms of both absolute and relative change. We follow this by presenting statistical associations between lake area change and predictor variables such as climate, glacier mass balance, and surrounding topography. Absolute and relative area change have substantially different statistical associations with predictor variables, and we thus discuss these findings in separate sections. We first perform bivariate correlations between individual environmental variables and lake area change, then discuss covariance between individual environmental variables, and finally present multivariate statistical analyses. We present both bivariate and multivariate results because each type of analysis provides context for the other. Comprehensive investigation of both types of statistical tests provides the strongest foundation for interpretation of potential physical controls on ice-marginal lake area change.

### 4.1 Summary of regional lake area change

Of the 107 ice-marginal lakes (both proglacial and ice-dammed) investigated in this study, which does not include every lake in the region, we find that 70 % grew in area, 12 % shrank, and 18 % remained relatively constant, changing by less than  $\pm 0.1 \text{ km}^2$  (Figs. 3 and 4; Table 2). Of proglacial lakes ( $n = 87$ ), 83 % grew, 5 % shrank, and 13 % remained relatively steady. In contrast, of the 20 ice-dammed lakes, only 15 % increased in area, while 45 % shrank and 40 % were relatively unchanged (Figs. 3–5; Table 2). Analyzing all ice-marginal lakes together, lake coverage increased in cumulative area by 59 % relative to 1984 (432 to 687  $\text{km}^2$ ). Dividing the study lakes into their sub-classes, proglacial lakes grew in total area by 81 % (336 to 606  $\text{km}^2$ ), while ice-dammed lake area shrank by  $-17 \%$  (96 to 80  $\text{km}^2$ ; Table 2).

Individual proglacial lakes experienced a median area change of  $+1.3 \text{ km}^2$  (mean is  $+3.1 \text{ km}^2$ ), with an interdecile range (10th to 90th percentile) growing between 0.0 and  $6.8 \text{ km}^2$  (Fig. 4a; Table 2). At the extremes, we observe a minimum proglacial lake area change of  $-2.4 \text{ km}^2$  and maximum of  $+44.2 \text{ km}^2$ . In terms of area change relative to each lake's initial area, we find a median proglacial lake growth of  $+125 \%$ , with an interquartile range of  $+42 \%$  to  $+384 \%$  (Figs. 3–4b). Considering the full range of relative area change produces physically meaningless values where lakes did not exist or were very small at the start of the record.

In contrast, ice-dammed lakes in this study experienced a median area change of  $-0.04 \text{ km}^2$  with an interdecile range of area change from  $-3.71$  to  $0.36 \text{ km}^2$  (Figs. 3 and 4a; Table 2). At the extremes, one ice-dammed lake shrank by  $-10.8 \text{ km}^2$  and one grew by  $+5.4 \text{ km}^2$ . In terms of area change relative to each lake's initial area, we find a median

ice-dammed lake area decline of  $-15 \%$ , with an interquartile range of  $-56 \%$  to  $+8 \%$  (Figs. 3–4b).

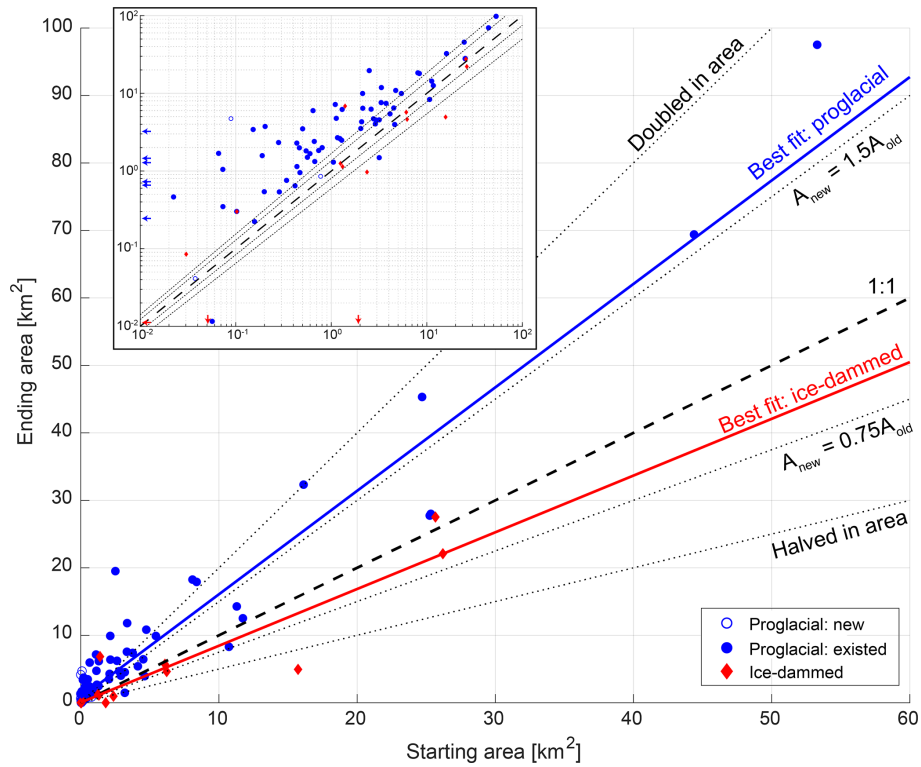
Of the 107 ice-marginal lakes considered in this study, 17 % detached from their associated glacier during our study period or between the Post and Mayo (1971) catalog and the beginning of our record. Lakes that detached from their associated glacier are found throughout the study region (Fig. 5). Nine proglacial lakes formed during the study period, with no new ice-dammed lakes observed in our lake subset. We use the term new lakes to denote lakes that formed during the study period (e.g., Fig. 3) but do not separate these lakes for later statistical analyses. Of growing lakes, 50 lakes (73 %) exhibit linear growth, while 8 (12 %) and 10 (15 %) lakes exhibit accelerating and decelerating growth, respectively. Of shrinking lakes, 9 (75 %) exhibit linear shrinkage, while 2 lakes (17 %) and 1 lake (8 %) exhibit accelerating and decelerating shrinkage, respectively (Fig. S4).

There is no obvious spatial organization of observed lake area change (Fig. 5), with all manners of change observed across the study area. We again stress that we investigate a subset of ice-marginal lakes ( $n = 107$ ), not every lake in the area, and determining their representativeness of population-scale regional lake behavior must be the subject of future work.

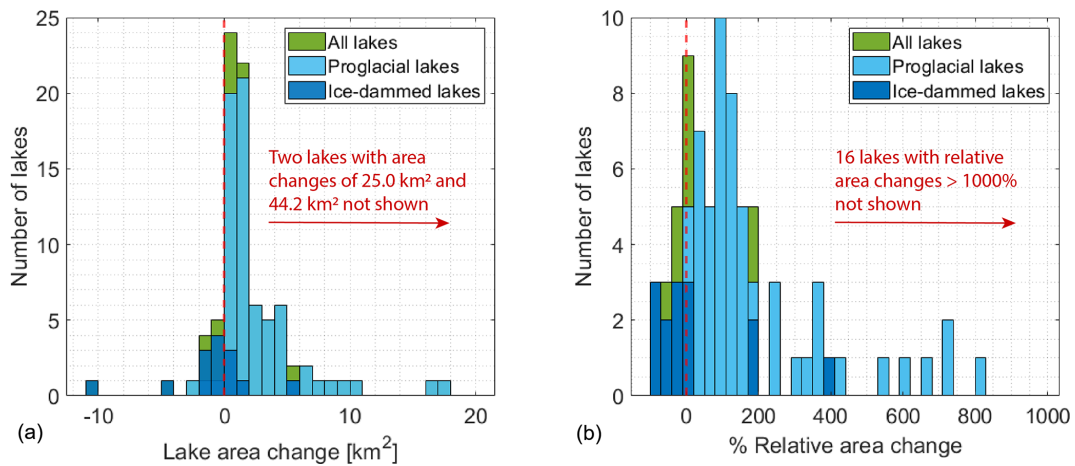
### 4.2 Bivariate correlations with absolute lake area change

#### 4.2.1 Climatic correlations with absolute area change

We investigate the potential influence of climatological variables on absolute ice-marginal lake area change between 1984–2018 using the non-parametric Kendall correlation test (Table 3). Average decadal summer (June, July, August) air temperature is positively associated with proglacial lake absolute area change ( $p < 0.05$ ;  $\tau = 0.19$ ), and winter (December, January, February) precipitation is inversely correlated with ice-dammed lake area change ( $p < 0.05$ ;  $\tau = -0.46$ ). As mentioned in Sect. 2.2, we run correlations between winter precipitation and summer temperature because these are the climate variables most relevant to glacier mass balance. Physically, these correlations mean that proglacial lakes in regions with warm summers are growing faster and ice-dammed lakes in regions with wet winters are shrinking more rapidly. Despite these correspondences with mean climate variables, we find little evidence for relationships between lake area change and the long-term change in summer air temperature or winter precipitation. The greatest rates of absolute ice-marginal lake area change are generally occurring in regions with minimal changes in winter precipitation and moderate warming (Figs. S5, S6). We do observe a significant positive relationship between the change in winter precipitation and proglacial absolute lake area change, yet there is not a clear physical mechanism to explain greater lake expansion in regions with more winter precipitation – we ex-



**Figure 3.** Ice-marginal lake area at the start (horizontal axis) and end (vertical axis) of the study period. Proglacial lakes that existed for the entire study period are shown as filled blue circles, while proglacial lakes that appeared in that time (new lakes) are shown as unfilled symbols. Red diamonds depict ice-dammed lakes. The dashed line shows 1 : 1 (i.e., lakes with constant area), while the dotted lines show various levels of relative area change. The blue (red) solid lines show the Theil–Sen estimator line of best fit to proglacial (ice-dammed) lakes. The inset shows the same data in log–log space to better display the behavior of small lakes.



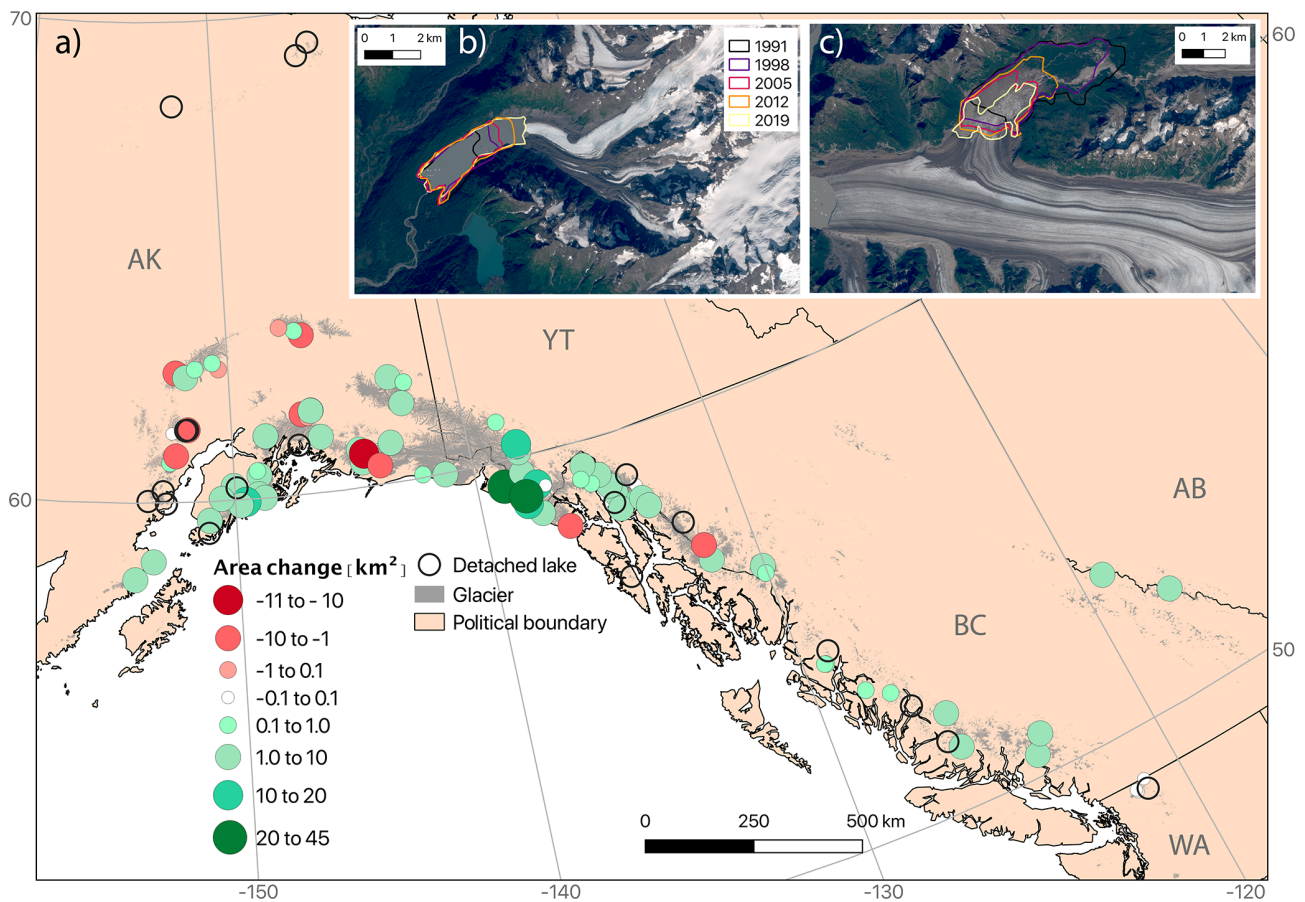
**Figure 4.** Distribution of proglacial and ice-dammed (a) absolute area change and (b) relative lake area change.

pand upon this idea in Sects. 4.4 and 5.4. A proglacial lake’s distance from the open ocean is inversely associated with its absolute area change ( $p < 0.05$ ;  $\tau = -0.23$ ; Fig. S9), indicating that coastal proglacial lakes are growing faster than inland lakes. The strength of this correlation is of similar magnitude to those relating proglacial lakes to other climate vari-

ables, and in Sect. 4.3 we argue covariance between climate variables and continentality provides a more plausible explanation for unintuitive correlations between absolute lake area and climatic variables.

**Table 2.** Summary statistics for proglacial and ice-dammed study lake area change. Steady lakes are defined as having changed by less than  $\pm 0.1 \text{ km}^2$ . Summary statistics are shown for the change in individual lakes, as well as for the cumulative area of all study lakes. For descriptors of individual lakes, we use the robust statistics of the median and 10th- and 90th-percentile lake area change because the existence of extreme values makes the minimum, mean, and maximum area change less meaningful (%ile denotes percentile in the table). Relative area change is scaled by a lake's initial area, so a 100 % increase indicates a lake that doubled in area, while  $-100 \%$  indicates a lake that completely disappeared.

	Proglacial			Ice-dammed		
	Growing (-, %)	Steady	Shrinking	Growing	Steady	Shrinking
Number of lakes (-, %)	72 (83 %)	11 (13 %)	4 (5 %)	3 (15 %)	8 (40 %)	9 (45 %)
Absolute area change (individual, $\text{km}^2$ )	10th %ile 0.01	Median 1.28	90th %ile 6.76	10th %ile -3.7	Median -0.04	90th %ile 0.36
Relative area change (individual, %)	10th %ile 8 %	Median 125 %	90th %ile > 1000 %	10th %ile -82 %	Median -15 %	90th %ile 212 %
Cumulative area ( $\text{km}^2$ )	1984 336	2018 606	Change 270 (81 %)	1984 96	2018 80	Change -17 (-17 %)



**Figure 5.** (a) Absolute area change for the studied ice-marginal lakes between 1984 and 2018, including both proglacial and ice-dammed lakes. Green (red) circles indicate lakes that grew (shrank) over the study period. White circles indicate lakes that remained relatively stable (within  $\pm 0.1 \text{ km}^2$  of their initial area), while unfilled circles show lakes that detached from their associated glacier during the study period. Glacier extent is shown in gray fill (RGI Consortium, 2017), and black lines indicate political boundaries. Examples are shown of (b) a growing proglacial lake (unnamed lake downstream from Twentymile Glacier; 60.94° N, 148.78° W) and (c) a shrinking ice-dammed lake (Van Cleve Lake dammed by Miles Glacier; 60.70° N, 144.41° W). Years displayed in (b) and (c) are upper limits on a lake's outline (e.g., a lake delineation between 1991 and 1998 will appear as a purple line). Background imagery in (b) and (c) is from Landsat 8.

**Table 3.** Kendall rank correlation coefficient ( $\tau$ ) values for monotonic relationships between absolute (middle columns) and relative (right-most columns) lake area change with associated climatological, glaciological, and topographic variables. In each category, test statistics are reported separately for proglacial and ice-dammed lakes. Bold numbers indicate correlations that are significant at  $p \leq 0.05$ , while regular text indicates relationships where  $0.05 < p \leq 0.1$ . Dashes indicate a correlation with  $p > 0.1$ . Positive (negative) correlation coefficients indicate a direct (inverse) relationship between the examined variables.

Parameter		Absolute area change		Relative area change	
		Proglacial	Ice-dammed	Proglacial	Ice-dammed
Climatological	Mean summer temperature (2000s)	<b>0.19</b>	–	–0.13	–
	Change in summer temperature (2000s–1960s)	–	–	–	–
	Mean winter precipitation (2000s)	–	<b>–0.46</b>	–	–
	Change in winter precipitation (2000s–1960s)	<b>0.20</b>	–	–0.15	–
	Distance to open ocean	<b>–0.23</b>	–	0.16	–
Glaciological	Glacier area	<b>0.22</b>	–	–	–
	Glacier width	<b>0.32</b>	–	–	–
	Median lake-adjacent ice thickness	<b>0.25</b>	–	–	0.47
	Mass balance gradient	–	–	<b>–0.18</b>	–
	2010s average annual mass balance	<b>–0.17</b>	–	–	–
	1980–2016 summed annual mass balance	–	–	–	–
Topographic	Latitude	–	–	–	–
	Longitude	–	–	–	–
	Elevation	<b>–0.27</b>	–	<b>0.19</b>	–
	Initial lake area	<b>0.33</b>	<b>–0.41</b>	<b>–0.53</b>	–

#### 4.2.2 Glaciologic correlations with absolute area change

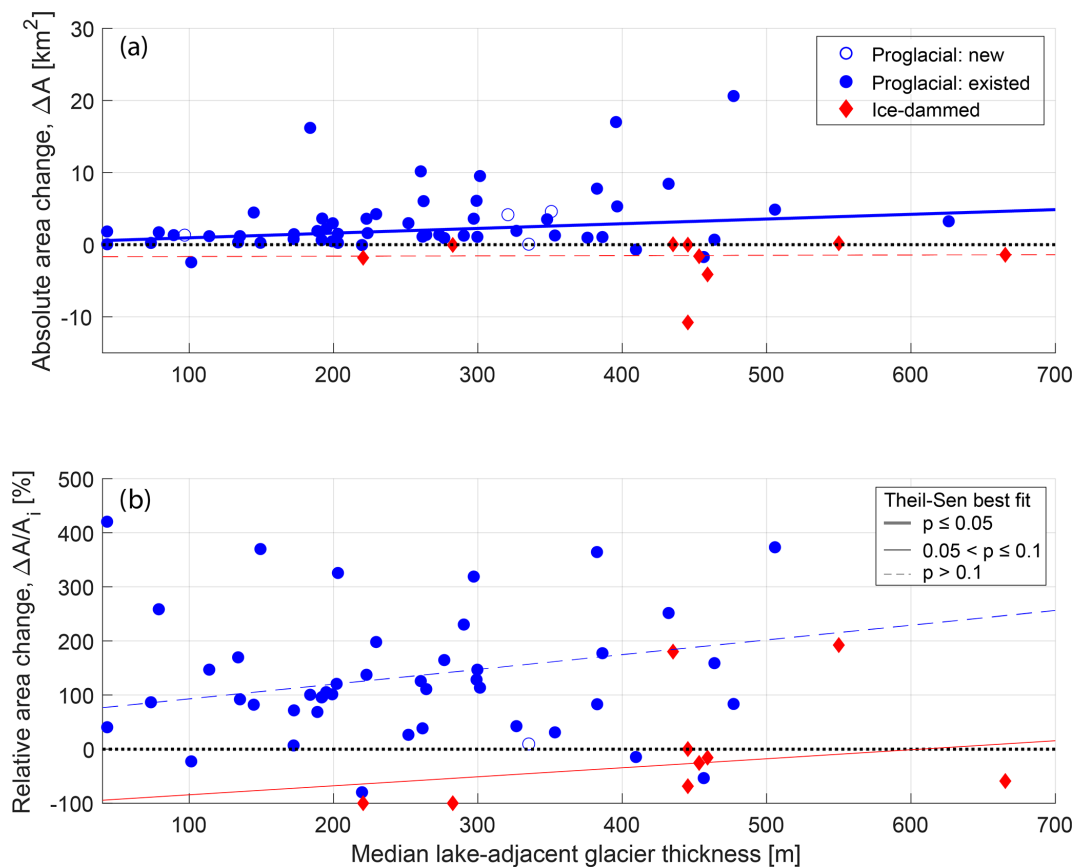
We find statistical associations between several glaciologic variables and absolute proglacial lake area change but not with ice-dammed lake area change (Table 3). For all lakes, the only glacier mass balance variable with a statistically significant correlation with absolute lake area change is the average mass balance in the 2010s ( $\tau = -0.17$ ; Fig. S7a). The sign of this correlation indicates that proglacial lakes are growing more rapidly downstream from glaciers with a more negative mass balance in recent times. Notably, we do not find any statistical links between lake area change and the associated glacier's cumulative mass balance over the 1980–2016 period (Table 3). Considering glacier geometric factors, however, we find several significant correlations with proglacial lake area change (Table 3). Glacier area ( $\tau = 0.22$ ), width ( $\tau = 0.32$ ; Fig. S8a), and near-terminal median ice thickness ( $\tau = 0.25$ ; Fig. 6) all exhibit correlations with proglacial lake area change at a  $p < 0.05$  level (Table 3). This indicates that proglacial lakes are growing most rapidly where they exist downstream of large and wide glaciers with thick ice near the terminus. We find no evidence for statistical links between absolute ice-dammed lake area change and either glacier geometric or mass balance variables (Table 3).

#### 4.2.3 Geometric and geomorphic correlations with absolute area change

Of all our climatic, glaciologic, and geometric variables, initial lake area is one of the strongest predictors of absolute lake area change, exhibiting a moderately strong statistically significant positive association with proglacial lake area change ( $\tau = 0.33$ ; Table 3; Fig. 7a) and a strong inverse relationship with ice-dammed lake area change ( $\tau = -0.41$ ; Table 3; Fig. 7a). We also find that glacier width at the terminus ( $\tau = 0.32$ ) is significantly associated with lake area change. Additionally, a moderately strong inverse relationship exists between absolute lake area change and elevation ( $\tau = -0.27$ ; Fig. 8a), with low-elevation lakes growing most rapidly. Together, these associations suggest that large, low-elevation lakes occupying wide valleys have grown most rapidly over the 1984–2018 study period. Harlequin Lake (below Yakutat Glacier, Alaska; Fig. 2a), the fastest-growing study lake ( $\Delta A = 44.2 \text{ km}^2$ ), exemplifies these traits.

#### 4.3 Bivariate correlations with relative lake area change

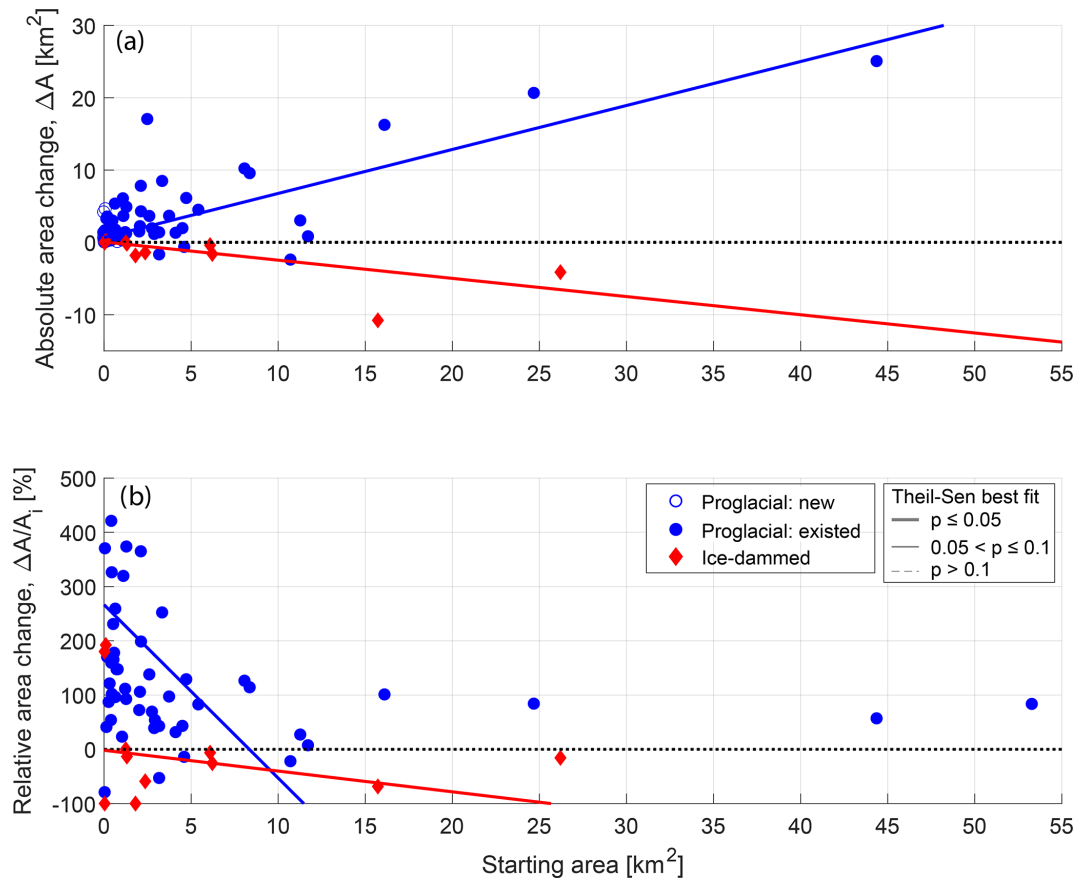
In Sect. 4.2, we discussed statistical associations between environmental variables and *absolute* lake area change. In this section, we investigate statistical links between *relative* lake area change and those same environmental variables. We first discuss statistical results for climatic variables, followed by glaciologic and geometric variables.



**Figure 6.** (a) Absolute and (b) relative lake area change as a function of median lake-adjacent glacier ice thickness (see Sect. 2.3) for proglacial (blue circle) and ice-dammed (red diamond) lakes. On both panels, lines show the linear fit to proglacial (blue) and ice-dammed (red) lakes as estimated to by the non-parametric Theil–Sen robust line. Thick solid lines show relationships that are significant at the  $p \leq 0.05$  level; thin solid lines show  $0.05 < p \leq 0.1$  relationships, and thin dashed lines show  $p > 0.1$  relationships. All significance values are estimated by the Kendall rank correlation test. The dotted black line shows zero lake area change. Unfilled symbols indicate lakes that appeared during the study period.

We find no statistically significant links between climate variables and relative ice-dammed lake area change, with a few  $p < 0.1$  associations for proglacial lakes (Table 3). The same climatic variables that were significant for absolute area change are again significant for relative proglacial lake area change, though with opposite signs. We observe inverse correlations between relative proglacial lake area change and average summer air temperature ( $\tau = -0.13$ ;  $p = 0.02$ ) as well as the change in winter precipitation ( $\tau = -0.15$ ;  $p = 0.01$ ). We find a direct relationship between relative proglacial lake area change and distance from the open ocean ( $\tau = 0.16$ ;  $p = 0.01$ ; Figs. 9c and S9b). As we discuss in Sect. 4.2 and 4.4, both summer air temperature and winter precipitation change are themselves correlated with distance from the open ocean (Figs. 9c, 10), and we suggest continentality is the most physically plausible driver of observed statistical links. While maritime proglacial lakes are growing most rapidly in terms of absolute area, interior proglacial lakes are growing most rapidly relative to their initial size (Fig. S9b).

Relatively few of the considered glaciologic variables are significantly correlated with relative ice-marginal lake area change. However, we do find a strong direct relationship between relative ice-dammed lake area change and lake-adjacent ice thickness ( $\tau = 0.47$ ;  $p = 0.07$ ; Fig. 6b). Physically, this suggests that lakes dammed by thick glaciers have shrunk least, relative to their initial area. Additionally, relative proglacial lake area change is inversely correlated with the associated glacier’s mass balance gradient ( $\tau = -0.18$ ;  $p = 0.04$ ; Fig. S7b). This indicates that proglacial lakes downstream from glaciers with “flat” mass balance gradients (i.e., little change in mass balance with increasing elevation) have grown most rapidly, relative to their initial area. This is consistent with interior proglacial lakes growing more rapidly in relative terms because maritime glaciers generally have steeper mass balance gradients, with the opposite being true for continental glaciers, as discussed in greater detail in Sect. 4.4.



**Figure 7.** (a) Absolute lake area change as a function of initial lake area for all proglacial lakes (blue circles) and ice-dammed lakes (red diamonds). (b) Relative lake area change as a function of initial lake area. In both panels, lines show the linear fit to proglacial (blue) and ice-dammed (red) lakes as estimated to by the non-parametric Theil–Sen robust line. Thick solid lines show relationships that are significant at the  $p \leq 0.05$  level; thin solid lines show  $0.05 < p \leq 0.1$  relationships, and thin dashed lines show  $p > 0.1$  relationships. All significance values are estimated by the Kendall rank correlation test. The dotted black line shows zero lake area change.

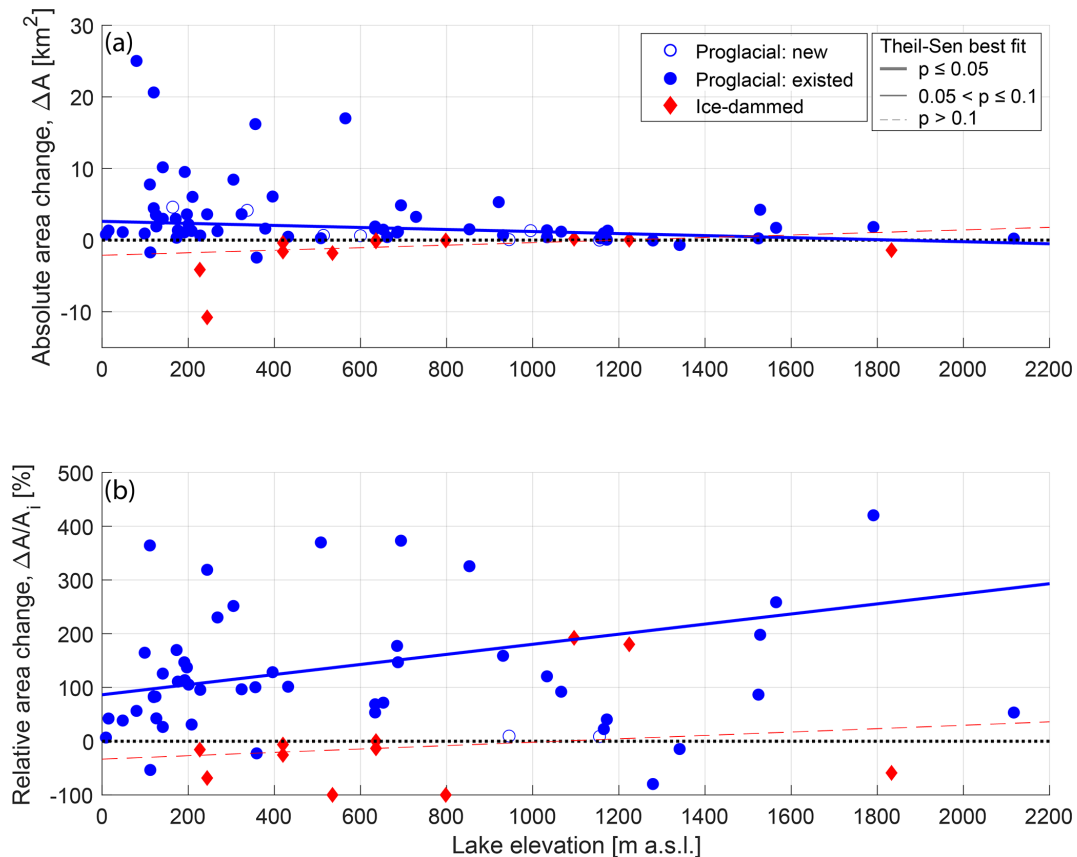
For the geometric and geomorphic variables, we again find the same statistically significant variables as seen for absolute area change but with the opposite sign. While low-elevation lakes tend to grow more rapidly in terms of absolute area change, high-elevation lakes grow more quickly in relative terms ( $\tau = 0.19$ ;  $p = 0.02$ ; Fig. 8b). We observe a strong inverse correlation between relative lake area change and initial lake area ( $\tau = -0.52$ ;  $p < 0.01$ ; Fig. 7b), but we interpret this to be an artifact of data processing because initial lake area is used to compute relative lake area change. That being said, this result suggests that smaller lakes are experiencing greater relative area change, while large lakes are experiencing greater absolute change.

#### 4.4 Assessing covariance of environmental variables

It is plausible that a correlation between lake area change and a single environmental variable is actually due to underlying covariance among the environmental variables. Covariance between environmental variables in some ways complicates

interpretation of the results presented in Sect. 4.2 and 4.3, but this covariance also provides a physically plausible explanation for several unintuitive results presented in those subsections. We cross-correlate the 15 environmental variables shown in Table 3 and find that most (63 %) of the possible pairs of environmental variables are significantly correlated at  $p < 0.05$  (Fig. 10; Table S4). These correlations signify that one environmental variable (e.g., summer temperature) systematically varies with another (e.g., latitude), which is driven by the spatially coherent structuring of these variables. Below, we describe several salient clusters of correlated environmental variables that affect interpretation of results presented in Sect. 4.2 and 4.3.

Lake elevation and initial lake area are both significantly correlated with 50 % of the other environmental variables, and the variables with which they covary are nearly identical (Fig. 10; Table S4). Large, low-elevation lakes are significantly associated with the following variables: proximity to the coast, high summer temperatures, winters that have become wetter, larger glaciers, wider glaciers, thicker glaciers,



**Figure 8.** (a) Absolute and (b) relative lake area change as a function of lake elevation for proglacial (blue circle) and ice-dammed (red diamond) lakes. On both panels, lines show the linear fit to proglacial (blue) and ice-dammed (red) lakes as estimated by the non-parametric Theil–Sen robust line. Thick solid lines show relationships that are significant at the  $p \leq 0.05$  level; thin solid lines show  $0.05 < p \leq 0.1$  relationships, and thin dashed lines show  $p > 0.1$  relationships. All significance values are estimated by the Kendall rank correlation test. The dotted black line shows zero lake area change. Unfilled symbols indicate lakes that appeared during the study period.

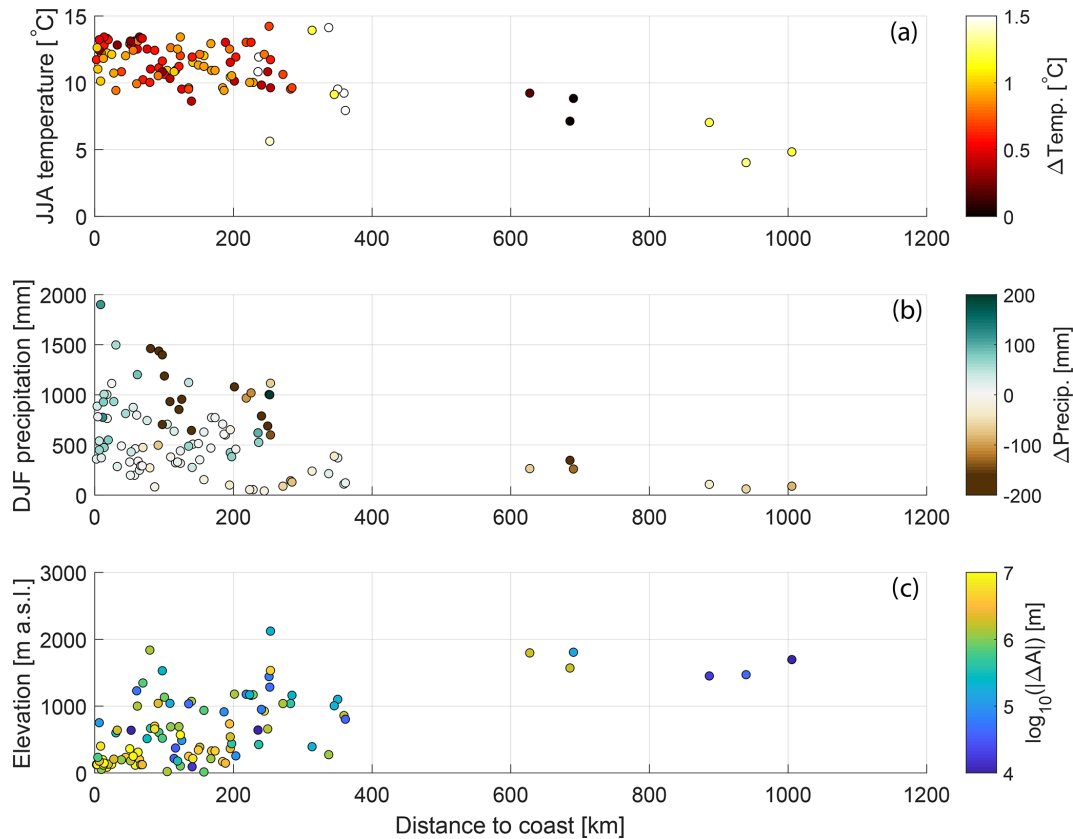
and glaciers with a steeper mass balance gradient. Distance to the coast is significantly correlated with a similar set of environmental variables but lacks significant association with the variables describing glacier size (i.e., area, width, lake-adjacent ice thickness).

Notably, variables describing glacier mass balance are not significantly correlated with lake elevation, initial area, or distance from the coast. Glaciers with more negative cumulative mass balance instead are significantly associated with locations further south and east; warm summers; wet winters; winters that are becoming drier; smaller, narrower, and thinner glaciers; and glaciers with a steep mass balance gradient.

#### 4.5 Multivariate correlations between lake area change and environmental variables

To supplement bivariate correlations and the above discussion of covariance between environmental variables, we undertake non-parametric correlation testing between ice-marginal lake area change and principal component scores. We first must interpret the physical meanings of the PC axes.

The first four principal component axes explain 73.3 % of the variance found in the 15 environmental variables for which we present correlation results (Table 2). After inspecting the loadings of environmental variables onto each principal component axis (Table S2) and plotting the quasi-exponential decay explained by increasing PC axis numbers, we retain only the first four PC axes for correlation testing. Some interpretation is required to understand the physical meaning of PCA results: strong loadings of the PC axis (PC1, absolute value  $\geq 0.25$ ) are found for environmental variables associated with a lake's geographic location (e.g., latitude, longitude, elevation), and so we interpret this axis to largely reflect a lake's position on the Earth's surface. This interpretation is supported by PC scores varying systematically along a latitudinal gradient (Fig. S3a). Strong PC2 loadings are indicative of a maritime setting; high PC2 scores are associated with low elevation, proximity to the open ocean, high mass balance gradients, and high winter precipitation (Table S2). This interpretation is again supported by the spatial distribution of PC2 scores, with a systematic decrease in scores



**Figure 9.** Variation in climatic and topographic variables as a function of a lake’s distance from the open ocean. **(a)** Summer air temperature (y axis) and its change (colors) between the 1960s and 2000s. **(b)** Winter precipitation (y axis) and its change between the 1960s and 2000s. **(c)** Lake elevation (y axis) and absolute lake area change between 1984 and 2018.

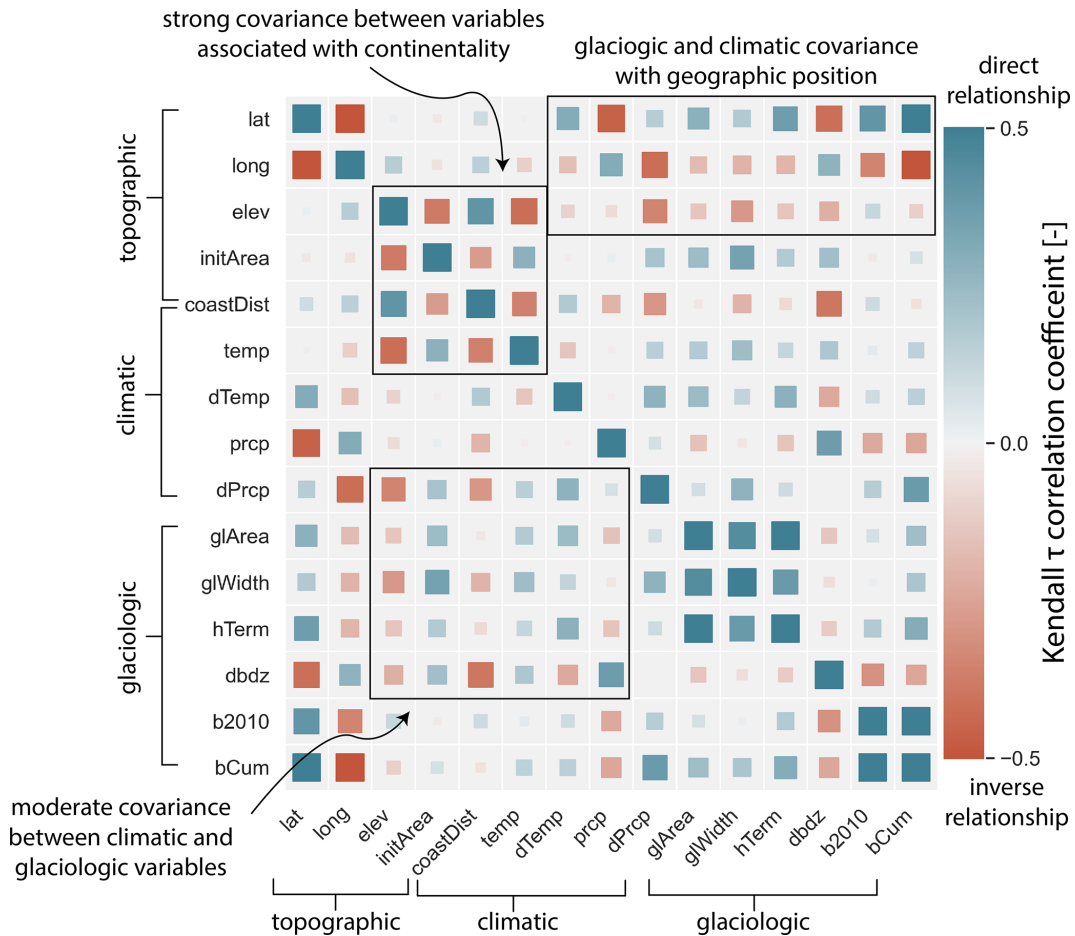
moving away from the coast (Fig. S3b). Glacier-size-related variables load most strongly onto PC3, while climate-related and climate-change-related variables load most strongly on PC4 (Table S2; Fig. S3d). We thus interpret PC axes 1–4 to aggregate individual environmental variables related to geographic position (i.e., latitude and longitude), continentality, glacier size, and climate (and its change), respectively.

The results show significant correlations for PC2 only (Table 4); the PC axis we interpret to reflect continentality (Sect. 3.4). Proglacial (ice-marginal) lakes exhibit a significant direct (inverse) correlation between PC2 and absolute lake area change. An inverse correlation ( $p \leq 0.05$ ) exists between PC2 and relative proglacial lake area change (Table 4). Due to the details of PCA data transformation, high PC2 scores are related to factors associated with a maritime setting. Therefore, a positive correlation coefficient indicates greater lake growth being associated with a maritime setting. A negative correlation coefficient indicates either greater lake area decline in a maritime setting or greater area increase towards the continental interior. These findings are consistent with the bivariate correlation results (Sect. 4.2, 4.3; Table 3), in which coastal proglacial (ice-dammed) lakes experienced the highest rates of absolute area increase (decrease), while

interior proglacial lakes experienced higher rates of relative area change.

In addition to these results, the relative area change in proglacial lakes is directly correlated ( $0.05 < p \leq 0.1$ ) with PC3 (Table 4), which we interpret as reflecting glacier size (Sect. 3.4). This suggests that proglacial lakes associated with large glaciers are experiencing higher rates of relative area change. No significant relationships between glacier geometric characteristics and relative area change were found for the bivariate correlations (Table 2). This discrepancy in significance between single-variable and multivariate analyses suggests that (1) by combining multiple glacier-related characteristics, the association between glacier size and relative lake area change becomes more apparent; (2) other variables that load strongly onto PC3 (e.g., elevation, longitude) underlie this association; or (3) our interpretation of the physical meaning of PC3 is incorrect. No other PC scores were associated with ice-marginal lake area change, in either an absolute or a relative sense at the  $p \leq 0.1$  level (Table 4).





**Figure 10.** Correlation matrix showing interrelatedness of the topographic, climatic, and glaciologic variables used for lake area change correlations (Table 2). Symbol color scales with the Kendall  $\tau$  correlation coefficient between the environmental variables associated with that point's row and column. Symbol size scales with the absolute value of the correlation coefficient. Black boxes highlight covarying environmental variables that are discussed in the text. Meanings for variable names are as follows: lat, latitude; long, longitude; elev, lake elevation; initArea, lake initial area; coastDist, distance from the open ocean; temp, JJA temperature; dTemp, change in JJA temperature; prcp, DJF precipitation; dPrpc, change in DJF precipitation; glArea, area of the lake-adjacent glacier; glWidth, width of that glacier; hTerm, lake-adjacent median ice thickness; dbdz, mass balance gradient; b2010, average annual mass balance for 2010–2016; and bCum, cumulative mass balance for 1980–2016.

**Table 4.** Kendall rank correlation coefficient ( $\tau$ ) values for monotonic relationships between absolute and relative lake area change with the four leading principal component axis scores. The interpretation for a physical meaning of each axis is listed beside the axis number. In each category, test statistics are reported separately for proglacial and ice-dammed lakes. Bold numbers indicate correlations that are significant at  $p \leq 0.05$ , while regular text indicates relationships where  $0.05 < p \leq 0.1$ . Dashes indicate a correlation with  $p > 0.1$ . Due to details of PCA data transformation, a positive (negative) correlation with PC2 indicates higher proglacial (ice-dammed) lake area growth (shrinkage) being associated with environmental variables characteristic of a maritime setting (e.g., close to coast, high mass balance gradient, low elevation). A positive correlation with PC3 indicates higher proglacial lake growth being associated with variables characteristic of larger glaciers (e.g., high glacier area, high lake-adjacent ice thickness).

PC axis number	Interpretation	Absolute area change		Relative area change	
		Proglacial	Ice-dammed	Proglacial	Ice-dammed
1	Spatial location	–	–	–	–
2	Continentality	<b>0.31</b>	<b>–0.61</b>	<b>–0.22</b>	–
3	Glacier size	–	–	0.18	–
4	Climate (change)	–	–	–	–

## 5 Discussion

The discussion aims to (1) put our findings of regional lake area change behavior in context with global ice-marginal lake change found in earlier works, (2) interpret the physical meaning of the pattern of statistical associations between predictor variables and absolute and relative lake area change, and (3) examine the limitations of our datasets and our analyses.

### 5.1 Regional lake change behavior

We observe diverging trends in lake area between studied ice-dammed and proglacial lakes. Many ice-dammed lakes (45 %) are shrinking in absolute area, while most proglacial lakes (83 %) are growing (Figs. 3, 4; Table 2), and proglacial lakes also increase in number. This dichotomy makes intuitive sense in the context of widespread glacier wastage in this area (Arendt et al., 2009). Proglacial lakes expand headward as their associated glaciers retreat. Meanwhile, ice-dammed lakes shrink because thinner ice dams are less capable of impounding large reservoirs, and ice-dammed tributary valleys are drained as trunk glaciers retreat. We find an average area decrease of 17 % among our studied ice-dammed lakes, slightly lower but broadly similar to the estimates of Wolfe et al. (2014), who found a 28 % decrease in Alaska ice-dammed lake area between 1971–2000. We note that, while here we document lake area change, i.e., a readily observable quantity, similar results would likely emerge if we estimated lake volume change because lake area scales with lake volume (Cook and Quincey, 2015; Shugar et al., 2020). However, converting area to volume in the absence of field observations requires the use of empirical scaling relationships (Cook and Quincey, 2015; Shugar et al., 2020) and would make the presented data more uncertain; we therefore only consider area change in the present study.

Similar studies of proglacial lakes undertaken across the Himalayas (Gardelle et al., 2011; Shukla et al., 2018; Wang et al., 2015; Zhang et al., 2019), northern Europe (Canas et al., 2015; Tweed and Carrivick, 2015), and the Andes (Wilson et al., 2018; Emmer et al., 2020) found increases in proglacial lake area ranging from 7 % to 110 %. We find that between 1984–2018 the proglacial lakes in northwestern North America investigated in this study have increased in cumulative areal coverage by approximately 58 %, with a median individual lake growth of 125 % (1.28 km<sup>2</sup>). In aggregate, this increase in proglacial lake area is also in agreement with conceptual models of proglacial lake expansion in size and number as overdeepened basins are exposed as their upstream glaciers retreat (Emmer et al., 2020; Otto, 2019). The fact that our aggregate Gulf of Alaska lake area change sits in the middle of previously reported values likely partly stems from the fact that Alaska lakes are in the early to middle stages of proglacial lake development. In less heavily glaciated areas such as the Peruvian Cordillera Blanca or Eu-

ropean Alps, the extant glaciers have already retreated into steep, high-elevation basins with little potential for further lake development, while glaciers in Alaska still extend to flatter, low elevations with more potential for lake development following glacier retreat. The extensive debris cover found on Alaska glaciers, which is most similar to Himalayan glaciers, could affect ice-marginal lake formation in several competing ways. While debris-covered glaciers tend to thin rather than retreat in response to climate warming (potentially limiting lake growth), they are also associated with lower surface slopes (potentially enhancing lake growth; e.g., Anderson et al., 2018). Assessing the importance of such factors provides an avenue for future research. Beyond these physical factors, some variation in lake area change between regions arises from slightly varying temporal spans or definitions of glacier-related study lakes.

Lake area change occurs either along a continuum (e.g., a small lake becoming bigger) or as a system switch (e.g., lake completely disappearing). These different modes of area change impact their adjoining environments in different ways. We document the temporal growth style of lakes moving along a continuum (Fig. S4) and find the majority of lakes (64 %) exhibit steady, linear growth trends over the study period. Assuming lake area change is tied to glacier retreat, this implies constant rates of glacier retreat, despite generally accelerating rates of mass loss (Gardner et al., 2013; Hugonnet et al., 2021; Zemp et al., 2019). This growth style could reflect the linear planform shape of many valleys in which ice-marginal lakes form, which allow lakes to grow in length but inhibit large changes in width. Of the investigated proglacial lakes ( $n = 73$ ), 10 (14 %) exhibit decelerating change (either growth or shrinkage), which is indicative of either (1) the lake area coming into a steady state in equilibrium with the current environment or (2) lakes reaching a late stage in their growth history in which they will soon detach from their associated glacier (Emmer et al., 2020). Regardless of the mechanism for decelerating change, both of these styles represent a stabilizing lake area. In contrast, 8 (11 %) lakes exhibit accelerating change. The paucity of lakes exhibiting stabilizing growth styles suggests that ice-marginal lakes in this area are in the middle stages of their growth history and will likely continue to change for the foreseeable future. Of our 107 study lakes, 9 appeared during our study period and 18 disconnected from their associated glacier (3 disconnected during our 1984–2018 study period, while 15 disconnected before 1984). Either of these transitions marks a fundamental shift in landscape connectivity and function (e.g., Dorava and Milner, 2000; Baker et al., 2016).

The evolution of ice-marginal lakes impacts downstream flood hazard due to their association with glacial lake outburst floods (GLOFs), also known as jökulhlaups. The majority of our ice-dammed study lakes shrunk, while proglacial lakes predominantly grew. Maximum outburst flood discharge (both instantaneous and cumulative) scales with the reservoir size (Björnsson, 2010; Nye, 1976). The diverging

trends between ice-dammed and proglacial lakes suggest that the outburst hazard associated with ice-dammed lakes may be, on average, decreasing across the study reach, while the hazard associated with proglacial lakes may be growing.

## 5.2 Topographic and geometric factors most strongly associated with ice-marginal lake area change

Both bivariate and multivariate statistical analyses suggest that topographic and geometric controls such as lake elevation and initial area exert the strongest influence on absolute ice-marginal lake area change (Tables 3, 4). As we discuss below, even variables we have previously called climatic or glaciologic may be thought of as topographic variables because they are closely associated with the shape of the basin into which a lake may grow as its associated glacier retreats and thins.

Initial lake area is the strongest bivariate predictor for absolute proglacial lake area change ( $\tau = 0.33$ ; Fig. 7a) and is the second strongest predictor for absolute ice-dammed lake area change ( $\tau = -0.41$ ; Fig. 7a). The greatest possible area loss of an ice-dammed lake is that associated with complete lake drainage. Thus, a small ice-dammed lake is fundamentally limited in its maximum area loss, while a large lake can experience significant shrinkage. We posit that this geometric control underlies the inverse correlation between absolute ice-dammed lake area change and its initial area. We hypothesize two mechanisms that may explain the fact that initially larger proglacial lakes have grown faster than initially small lakes: (1) the initial existence of a large lake requires a large basin, and basins generally do not end abruptly. Therefore, the simple existence of a large lake suggests that there is higher potential growth in a regionally extensive depression. This explanation would require Alaska's proglacial lakes to be in an early stage of development (Emmer et al., 2020), with ample room to grow into overdeepened basins. Alternatively, (2) larger lakes likely have a greater surface area at the glacier–lake interface, which may lead to higher rates of frontal ablation. Simply, a wider calving front would give rise to greater lake area growth for a set amount of up-valley glacier retreat – a notion supported by our observation that proglacial lakes downstream from wide glaciers have grown most rapidly in absolute terms (Table 3). One can posit other mechanisms to explain this observation, perhaps that large lakes tend to be warmer (Sugiyama et al., 2016; Truffer and Motyka, 2016), which could affect rates of subaqueous melting and, consequently, glacier retreat. Alternatively, lake depth scales with lake area (Cook and Quincey, 2015), and deeper water at a glacier's terminus generally enhances its calving flux and thus retreat rate (e.g., Benn et al., 2007). Exploring such possibilities provides an interesting opportunity for future research but is beyond the scope and data constraints of the current study.

Several other factors that are statistically significantly linked can be explained using the framework of topo-

graphic factors exerting primary control on absolute lake area change. Lake elevation is inversely associated with absolute proglacial lake area change, with low-elevation lakes growing most rapidly (Fig. 8a; Table 3). A lake's distance to the ocean may be used to predict absolute proglacial lake area change, with maritime lakes growing most rapidly (Figs. 9 and S9; Table 3). Finally, the median thickness of glacier ice in the region immediately abutting a proglacial lake is directly correlated with that lake's area change, with lakes downstream from thick glaciers growing most rapidly (Fig. 6; Table 3). Multivariate statistics support these interpretations, with significant correlations found between both proglacial and ice-dammed lakes and PC2 scores (Table 4), the PC axis with strong loadings from topographic variables such as lake elevation and distance from the coast (Table S2). All of these associations can be explained by the lake basin geometry expected to be encountered on an idealized transect from the coast towards the interior of the continent as follows. The Gulf of Alaska region is tectonically active; featured widespread glacier coverage during the Pleistocene (Kauman and Manley, 2004); and has experienced vigorous geomorphic work by glaciers, rivers, and waves (Péwé, 1975). These facts mean that, moving inland from the Gulf of Alaska coast, one first encounters broad lowlands composed of unconsolidated sediment, followed by wide valleys carved by Pleistocene ice streams which have been reworked by modern fluvial processes and then higher, steeper, and narrow valleys occupied by modern glaciers (Péwé, 1975). In this idealized transect, we expect the large glaciers extending into the coastal plain to be capable of excavating deep basins into weak sediments without significant lateral constraint. Moving inland, steeper and more confined valley geometries inhibit absolute lake growth. Thus, we propose that even variables that at first appear to be associated with climate or glaciology, such as distance from the open ocean or glacier area, may actually be associated with absolute lake area change due to underlying links with lake basin geometry.

In contrast, several of the same climatic, glaciologic, and topographic variables discussed above for *absolute* lake area change exhibit statistically significant relationships with *relative* proglacial lake area change but with the opposite sign. In terms of *relative* area change, it is the inland, high-elevation proglacial lakes that are growing most rapidly. This finding is consistent with the global-scale study of Shugar et al. (2020), who observed that the increase in the number of ice-marginal lakes primarily occurred through the generation of new lakes at high elevation. Like that work, our results suggest that inland, high-elevation regions are undergoing greater relative change, which is especially relevant given the potential for hydropower development in these locations (Farinotti et al., 2019c).

### 5.3 Lack of evidence for strong direct climatic or glaciologic association with ice-marginal lake area change

Beyond the variables discussed above, which we argue largely reflect lake-adjacent topography, bivariate and multivariate statistical analyses suggest that climatic and glaciologic variables exert minimal influence on either absolute or relative ice-marginal lake area change. Though we observe some associations between mean climate and ice-marginal lake area change, we do not find any statistically significant associations between temperature change over the 1960s–2000s and only an unintuitive inverse correlation between winter precipitation change and proglacial lake area change (Sects. 4.2.1 and 5.4; Table 3). We find a  $0.05 < p \leq 0.1$  relationship between relative proglacial lake area change and PC3 (Table 4), the PC axis with strong loadings from variables associated with glacier size (Sect. 3.4). Aside from this weaker correlation, though, we find no multivariate statistical evidence for associations between lake area change and the PC axes that load strongly with glaciological or climatological variables (Table 4). This is somewhat surprising, because glacier change must somehow be linked to ice-marginal lake area change, and glacier change is sensitive to these quantities. Where we do find statistically significant relationships between absolute lake area change and climatic factors, they occur in manners that defy simple physical explanation. For example, it is difficult to see why proglacial lakes experiencing positive/neutral changes in winter precipitation would experience greater lake growth (Figs. S5, S6d, S10d; Table 3) because increasing winter precipitation likely benefits glacier mass balance and would thus inhibit glacier retreat and associated lake growth. We suggest these correlations with climatic factors reflect underlying covariance in our datasets, discussed in greater detail in Sects. 4.4 and 5.4. Summer temperature, winter precipitation, and their changes all systematically vary with distance from the open ocean (Figs. 9, 10), as does a lake's elevation (Fig. 10), and we suggest seemingly unintuitive climatic correlations, such as that described above, are actually driven by a lake's distance from the coast (Figs. 9, 10, and S9; Table S4). Lakes that are further inland experience a more continental climate, but this relationship could also largely express topographic and geometric controls, as described in Sect. 5.2. We note that we do not run correlations between lake area change and mean annual precipitation because variations in winter precipitation and summer temperature show strong relationships with Alaska glacier mass balance, particularly for coastal glaciers (e.g., McGrath et al., 2017), though changes in precipitation throughout the whole year could be more important for glacier mass balance elsewhere. Probing relationships with environmental variables beyond those presented here provides productive avenues for future research. The lack of strong associations with these external factors may suggest that although climate and associated glacier change are the

overarching factors of lake area change, the specific response of a lake to these changes is largely shaped by local factors, such as overdeepening shape and associated lake growth potential. These local factors are more closely tied to topography than to climatological or glaciological factors.

Another reason that we do not observe strong associations between climatic factors with ice-marginal lake area change could be due to the processes underlying glacier evolution obscuring the climate signal. Glaciers display varied sensitivity to climatic forcing (e.g., Jiskoot et al., 2009; McGrath et al., 2017; O'Neel et al., 2019; McNeil et al., 2020), so we may expect glacier mass balance, rather than climatic factors alone, to better explain lake behavior. We do find an association between absolute proglacial lake area change and average annual glacier mass balance over 2010–2016 (Table 3; Fig. S7a), but we do not observe links with decadal average mass balance for any other period nor with cumulative mass balance over a longer period. The variable sensitivity of glacier length change to mass balance perturbation (e.g., Che et al., 2017) likely complicates the link between lake area change and glacier mass balance. We therefore suggest the lack of a statistical relationship between most mass balance variables and lake area change is due to the fact that glacier retreat, as well as associated lake growth, is responding to climate change in a lagged and smoothed manner. The average response time of lake-associated glaciers is 92 years (Fig. S1d), while our record length is only 34 years. Thus, the relevant period of climate change to best predict lake area change may require either a longer or an earlier period of record than we investigate.

### 5.4 Data and statistical limitations

When considering climatological, glaciologic, and topographic controls on lake area change, it is important to note that these variables are often intertwined (Fig. 10; Table S4). For example, glacier thickness, area, and slope are highly correlated (e.g., Bahr et al., 2015). Further, we expect these glaciologic variables to be related to climate – a large glacier is more likely to be found in an area of high winter precipitation and low summer temperature. We provide this as one example of interrelated environmental variables but acknowledge that the existence of covariance between environmental variables is pervasive in this dataset and makes interpretation of statistical results more complicated. Principal component analysis does not entirely solve this problem because, while it provides independent PC axes, an individual axis still contains correlated environmental variables and thus does not allow for the disentanglement of all variables. In previous sections, we present several statistical associations that lack a straightforward physical explanation and suggest that underlying covariance in environmental variables is the most plausible explanation for these associations. Proximity to the coast and general topographic features associated with coastal or interior settings provide a coherent

and physically plausible framework for understanding many of these unintuitive correlations. However, a lake's distance from the coast is also correlated with its initial area and elevation (Fig. 10). This covariance means that we cannot definitively say whether it is a lake's proximity to the coast, its size, or elevation that truly matters most in providing a physical explanation for the observed patterns of ice-marginal lake area change. However, highlighting the fact that these correlations exist provides testable hypotheses for future studies to investigate the physical mechanisms underlying these relationships in more detail.

We find more statistically significant associations between climatic, glaciologic, and topographic variables and proglacial lake area change than we do for ice-marginal lake area change. This may occur because proglacial lakes are actually more sensitive to these environmental factors, but there is likely some role due to differing sample sizes between the proglacial and ice-dammed groups. Due to exclusion of lakes that detach from their associated glacier during the study period, our statistical analyses investigate 73 proglacial lakes but only 14 ice-dammed lakes. For a given effect size (i.e., correlation strength), a smaller sample will produce a higher  $p$  value (i.e., less significant) than a larger sample (Helsel and Hirsch, 2002). Therefore, the fact we observe fewer statistically significant relationships for ice-dammed lakes should not be taken to mean that these relationships do not exist but simply that a larger-scale study is needed to more definitively investigate controls on ice-dammed lake area change. Such a study is beyond the scope of this work.

Additionally, our study of physical controls on lake area change is only as robust as the datasets upon which we rely. In reality, there may be a link between a variable we have investigated and lake area change, but the relationship does not manifest itself in our study because our representation of that variable is in error. These datasets we employ were optimized to minimize misfit over a large area, and the accuracy of a single value for any one glacier or pixel may be higher than the average values reported in Sect. 2.2–2.4. Despite this uncertainty, these datasets provide our best estimates of these values over our study area, which is too large and remote to allow more detailed characterization of individual sites. We therefore utilize these datasets to allow a preliminary investigation of the importance of these factors over a large area, which can later be refined with more detailed studies.

## 6 Conclusion

We investigate the time evolution of 107 ice-marginal lakes across northwestern North America over 1984–2018 and find the majority (83 %) of proglacial lakes grew (median relative change was 125 %) while many (45 %) ice-dammed lakes shrunk (median relative change was  $-15$  %). Non-parametric bivariate and multivariate statistical analyses assess correlations between ice-marginal lake area change and poten-

tial physical controls such as climatic, glaciologic, and topographic attributes of the regions surrounding each lake. Our findings indicate that factors associated with a lake's geometry and its adjacent topography are most strongly linked to lake area change. Large, coastal, low-elevation lakes associated with large, wide, thick glaciers underwent the largest area changes, while small, inland, high-elevation lakes changed most relative to their initial areas. Covariance between continentality and climatic variables likely underlies the observed unintuitive correlations with those factors, though this same covariance also makes it difficult to assess whether a lake's distance from the open ocean, its elevation, or its initial area is the most important variable in predicting recent lake area change. We caution authors of similar work to consider such covariance between climatic, glaciologic, and topographic factors when investigating apparent physical controls on lake behavior. We find some evidence for enhanced lake area change being associated with glaciers undergoing greater rates of mass loss over the most recent decade but do not find correlations with long-term cumulative mass balance or changes in climatic variables in ways that decrease glacier mass balance (i.e., summer warming, winter drying). We suggest that, while climate change and associated glacier wastage must be the primary external driver for lake area change, topographic and geometric factors exert primary control because a lake cannot expand if no basin exists to accommodate its growth. We have shown that ice-marginal lakes have changed substantially over the Landsat record and that many will likely continue to evolve. These shifts in lake area have likely impacted adjacent biophysical systems by changing the timing and magnitude of water and sediment fluxes and will continue to do so. Our study provides initial suggestions of the environmental variables most strongly associated with ice-marginal lake area change. However, to better understand how these glacial lakes will continue to evolve in the face of global climate change, we must further investigate the physical mechanisms by which ice-marginal lakes change, undertake more sophisticated multivariate analyses of these systems, and explore the influence of environmental factors not examined in this work.

*Code and data availability.* A shapefile of time-varying lake outlines can be found at the Arctic Data Center via <https://doi.org/10.18739/A27659G66> (Field and Armstrong, 2021). Python and MATLAB scripts for GIS and data processing as well as statistical analyses can be found at <https://github.com/armstrwa/proglacialLakes> (last access: 13 July 2021, Armstrong, 2021). Climate reanalysis data are available at <http://ckan.snap.uaf.edu/dataset/historical-monthly-and-derived-temperature-products-downscaled-from-cru-ts-data-via-the-delta-m> (for temperature data; last access: 13 July 2021, Leonawicz et al., 2021a) and <http://ckan.snap.uaf.edu/dataset/historical-monthly-and-derived-precipitation-products-downscaled-from-cru-ts-data-via-the-delta> (for precipitation data; last access:

13 July 2021, Leonawicz et al., 2021b). The Randolph Glacier Inventory is located at <https://www.glims.org/RGI/> (last access: 13 July 2021). GeoTIFF files of ice thickness data from Farinotti et al. (2019a) can be downloaded from <https://doi.org/10.3929/ethz-b-000315707> (Farinotti et al., 2019b). Glacier mass balance data are from Huss and Hock (2015) and may be requested from those authors.

*Supplement.* The supplement related to this article is available online at: <https://doi.org/10.5194/tc-15-3255-2021-supplement>.

*Author contributions.* HRF undertook lake delineation, data processing, and statistical analyses and drafted the manuscript text. WHA designed the study, performed geospatial data extraction, advised HRF, secured funding, and contributed to manuscript writing and revision. MH modeled glacier mass balance variables, assisted with statistical design, and contributed to the text.

*Competing interests.* The authors declare that they have no conflict of interest.

*Disclaimer.* Publisher's note: Copernicus Publications remains neutral with regard to jurisdictional claims in published maps and institutional affiliations.

*Acknowledgements.* We thank Regine Hock for discussing unpublished modeled glacier mass balance data. We appreciate conversations with Dominik Schneider, Steve Hageman, Maggie Sugg, and Hasthika Rupasinghe, which provided great insight into the use of multivariate statistical methods. We thank Dan McGrath for discussing climate reanalysis data and Leif Anderson for discussing glacier response times. We gratefully acknowledge the Department of Geological and Environmental Sciences at Appalachian State University (ASU) for funding Hannah R. Field as an undergraduate research assistant. We recognize the ASU Office of Student Research for conference travel funding. We thank Jenna Sutherland, the anonymous reviewer, and associate editor Chris R. Stokes for constructive reviews that improved the rigor, clarity, and contextualization of this work.

*Financial support.* This research has been supported by the National Science Foundation (grant no. OPP-1821002).

*Review statement.* This paper was edited by Chris R. Stokes and reviewed by Jenna Sutherland and one anonymous referee.

## References

Anderson, R. S., Anderson, L. S., Armstrong, W. H., Rossi, M. W., and Crump, S. E.: Glaciation of alpine

valleys: The glacier – debris-covered glacier – rock glacier continuum, *Geomorphology*, 311, 127–142, <https://doi.org/10.1016/j.geomorph.2018.03.015>, 2018.

- Arendt, A., Walsh, J., and Harrison, W.: Changes of Glaciers and Climate in Northwestern North America during the Late Twentieth Century, *J. Climate*, 22, 4117–4134, <https://doi.org/10.1175/2009JCLI2784.1>, 2009.
- Armstrong, W. H.: proglacialLakes, available at: <https://github.com/armstrwa/proglacialLakes>, last access: 13 July 2021.
- Bahr, D. B., Pfeffer, W. T., and Kaser, G.: A review of volume-area scaling of glaciers, *Rev. Geophys.*, 53, 95–140, 2015.
- Bajracharya, S. R., Maharjan, S. B., Shrestha, F., Guo, W., Liu, S., Immerzeel, W., and Shrestha, B.: The glaciers of the Hindu Kush Himalayas: current status and observed changes from the 1980s to 2010, *Int. J. Water Resour. Dev.*, 31, 161–173, 2015.
- Baker, M. A., Arp, C. D., Goodman, K. J., Marcarelli, A. M., and Wurtsbaugh, W. A.: Stream-lake interaction: understanding coupled hydro-ecological systems, in: *Stream Ecosystems in a Changing Environment*, 321–348, Academic Press, London, UK; San Diego, USA; Cambridge, USA; Oxford, UK, 2016.
- Benn, D. I., Hulton, N. R. J., and Mottram, R. H.: “Calving laws”, “sliding laws” and the stability of tidewater glaciers, *Ann. Glaciol.*, 46, 123–130, <https://doi.org/10.3189/172756407782871161>, 2007.
- Bieniek, P. A., Bhatt, U. S., Walsh, J. E., Rupp, T. S., Zhang, J., Krieger, J. R., and Lader, R.: Dynamical downscaling of ERA-Interim temperature and precipitation for Alaska, *J. Appl. Meteorol. Climatol.*, 55, 635–654, 2016.
- Björnsson, H.: Understanding jökulhlaups: From tale to theory, *J. Glaciol.*, 56, 1002–1010, <https://doi.org/10.3189/002214311796406086>, 2010.
- Bogen, J., Xu, M., and Kennie, P.: The impact of pro-glacial lakes on downstream sediment delivery in Norway, *Earth Surf. Process. Landf.*, 40, 942–952, 2015.
- Brun, F., Treichler, D., Shean, D., and Immerzeel, W. W.: Limited Contribution of Glacier Mass Loss to the Recent Increase in Tibetan Plateau Lake Volume, *Front. Earth Sci.*, 8, 1–14, <https://doi.org/10.3389/feart.2020.582060>, 2020.
- Buckel, J., Otto, J.-C., Prasicsek, G., and Keuschnig, M.: Glacial lakes in Austria-Distribution and formation since the Little Ice Age, *Glob. Planet. Change*, 164, 39–51, 2018.
- Canas, D., Chan, W. M., Chiu, A., Jung-Ritchie, L., Leung, M., Pillay, L. and Waltham, B.: Potential Environmental Effects of Expanding Lake Jökulsárlón in Response to Melting of Breiðamerkurjökull, Iceland, *Cartogr. Int. J. Geogr. Inf. Geovisualization*, 50, 204–213, 2015.
- Carrivick, J. L. and Tweed, F. S.: A global assessment of the societal impacts of glacier outburst floods, *Glob. Planet. Change*, 144, 1–16, <https://doi.org/10.1016/j.gloplacha.2016.07.001>, 2016.
- Che, Y., Zhang, M., Li, Z., Li, H., Wang, S., Sun, M., and Zha, S.: Glacier mass-balance and length variation observed in China during the periods 1959–2015 and 1930–2014, *Quaternary Int.*, 454, 68–84, <https://doi.org/10.1016/j.quaint.2017.07.003>, 2017.
- Chernos, M., Koppes, M., and Moore, R. D.: Ablation from calving and surface melt at lake-terminating Bridge Glacier, British Columbia, 1984–2013, *The Cryosphere*, 10, 87–102, <https://doi.org/10.5194/tc-10-87-2016>, 2016.

- Cook, S. J. and Quincey, D. J.: Estimating the volume of Alpine glacial lakes, *Earth Surf. Dynam.*, 3, 559–575, <https://doi.org/10.5194/esurf-3-559-2015>, 2015.
- Cook, S. and Swift, D.: Subglacial basins: Their origin and importance in glacial systems and landscapes, *Earth-Sci. Rev.*, 115, 332–372, <https://doi.org/10.1016/j.earscirev.2012.09.009>, 2012.
- Cuffey, K. M. and Paterson, W. S. B.: *The physics of glaciers*, Academic Press, London, UK; San Diego, USA; Cambridge, USA; Oxford, UK, 2010.
- Daly, C., Taylor, G. H., and Gibson, W. P.: The PRISM approach to mapping precipitation and temperature. In *Proceedings 10th AMS Conference on Applied Climatology*, American Meteorological Society, 20–23 October, Reno, NV, 10–12, 1997.
- Danielson, J. J. and Gesch, D. B.: Global multi-resolution terrain elevation data 2010 (GMTED2010): U.S. Geological Survey Open-File Report 2011-1073, available at: <http://pubs.usgs.gov/of/2011/1073/pdf/of2011-1073.pdf> (last access: 13 July 2021), 26 pp., 2011.
- Debnath, M., Syiemlieh, H. J., Sharma, M. C., Kumar, R., Chowdhury, A., and Lal, U.: Glacial lake dynamics and lake surface temperature assessment along the Kangchengayo-Pauhunri Massif, Sikkim Himalaya, 1988–2014, *Remote Sens. Appl. Soc. Environ.*, 9, 26–41, 2018.
- Dorava, J. M. and Milner, A. M.: Role of lake regulation on glacier-fed rivers in enhancing salmon productivity: the Cook Inlet watershed, south-central Alaska, USA, *Hydrol. Process.*, 14, 3149–3159, 2000.
- Emmer, A., Harrison, S., Mergili, M., Allen, S., Frey, H., and Huggel, C.: 70 years of lake evolution and glacial lake outburst floods in the Cordillera Blanca (Peru) and implications for the future, *Geomorphology*, 365, 107178, <https://doi.org/10.1016/j.geomorph.2020.107178>, 2020.
- Falatkova, K., Šobr, M., Neureiter, A., Schöner, W., Janský, B., Häusler, H., Engel, Z., and Beneš, V.: Development of proglacial lakes and evaluation of related outburst susceptibility at the Adygin ice-debris complex, northern Tien Shan, *Earth Surf. Dynam.*, 7, 301–320, <https://doi.org/10.5194/esurf-7-301-2019>, 2019.
- Farías-Barahona, D., Wilson, R., Bravo, C., Vivero, S., Caro, A., Shaw, T. E., Casassa, G., Ayala, Á., Mejías, A., Harrison, S., Glasser, N. F., McPhee, J., Wüdrich, O., and Braun, M. H.: A near 90-year record of the evolution of El Morado Glacier and its proglacial lake, Central Chilean Andes, *J. Glaciol.*, 66, 846–860, <https://doi.org/10.1017/jog.2020.52>, 2020.
- Farinotti, D., Huss, M., Fürst, J. J., Landmann, J., Machguth, H., Maussion, F., and Pandit, A.: A consensus estimate for the ice thickness distribution of all glaciers on Earth, *Nat. Geosci.*, 12, 168–173, 2019a.
- Farinotti, D., Huss, M., Fürst, J. J., Landmann, J. M., Machguth, H., Maussion, F., and Pandit, A.: A consensus estimate for the ice thickness distribution of all glaciers on Earth [data set], ETH Zürich, <https://doi.org/10.3929/ethz-b-000315707>, 2019b.
- Farinotti, D., Round, V., Huss, M., Compagno, L., and Zekollari, H.: Large hydropower and water-storage potential in future glacier-free basins, *Nature*, 575, 341–344, 2019c.
- Fellman, J. B., Nagorski, S., Pyare, S., Vermilyea, A. W., Scott, D., and Hood, E.: Stream temperature response to variable glacier coverage in coastal watersheds of Southeast Alaska, *Hydrol. Process.*, 28, 2062–2073, 2014.
- Field, H. R. and Armstrong, W. H.: Greater Gulf of Alaska ice-marginal lake perimeters over 1984–2018 [data set], Arctic Data Center, <https://doi.org/10.18739/A27659G66>, 2021.
- Gardelle, J., Arnaud, Y., and Berthier, E.: Contrasted evolution of glacial lakes along the Hindu Kush Himalaya mountain range between 1990 and 2009, *Glob. Planet. Change*, 75, 47–55, 2011.
- Gardner, A. S., Moholdt, G., Cogley, J. G., Wouters, B., Arendt, A. A., Wahr, J., Berthier, E., Hock, R., Pfeffer, W. T., and Kaser, G.: A reconciled estimate of glacier contributions to sea level rise: 2003 to 2009, *Science*, 340, 852–857, 2013.
- Haerberli, W., Linsbauer, A., Cochachin, A., Salazar, C., and Fischer, U. H.: On the morphological characteristics of overdeepenings in high-mountain glacier beds, *Earth Surf. Process. Landf.*, 41, 1980–1990, <https://doi.org/10.1002/esp.3966>, 2016.
- Harris, I., Jones, P. D., Osborn, T. J., and Lister, D. H.: Updated high-resolution grids of monthly climatic observations – the CRU TS3.10 Dataset, *Int. J. Climatol.*, 34, 623–642, 2014.
- Helsel, D. R. and Hirsch, R. M.: *Statistical Methods in Water Resources Techniques of Water Resources Investigations*, Book 4, chapter A3, U.S. Geological Survey, 522 pp., Reston, USA, 2002.
- Hugonnet, R., McNabb, R., Berthier, E., Menounos, B., Nuth, C., Girod, L., Farinotti, D., Huss, M., Dussaillant, I., and Brun, F.: Accelerated global glacier mass loss in the early twenty-first century, *Nature*, 592, 726–731, 2021.
- Huss, M. and Hock, R.: A new model for global glacier change and sea-level rise, *Front. Earth Sci.*, 3, 1–22, <https://doi.org/10.3389/feart.2015.00054>, 2015.
- Jacquet, J., McCoy, S. W., McGrath, D., Nimick, D. A., Fahey, M., O’Kuinghtons, J., Friesen, B. A., and Leidich, J.: Hydrologic and geomorphic changes resulting from episodic glacial lake outburst floods: Rio Colonia, Patagonia, Chile, *Geophys. Res. Lett.*, 44, 854–864, 2017.
- Jiskoot, H., Curran, C. J., Tessler, D. L., and Shenton, L. R.: Changes in Clemenceau Icefield and Chaba Group glaciers, Canada, related to hypsometry, tributary detachment, length–slope and area–aspect relations, *Ann. Glaciol.*, 50, 133–143, <https://doi.org/10.3189/172756410790595796>, 2009.
- Jóhannesson, T., Raymond, C. F., and Waddington, E. D.: A Simple Method for Determining the Response Time of Glaciers, in: *Glacier Fluctuations and Climatic Change*, edited by: Oerlemans, J., *Glaciology and Quaternary Geology*, vol. 6, Springer, Dordrecht, [https://doi.org/10.1007/978-94-015-7823-3\\_22](https://doi.org/10.1007/978-94-015-7823-3_22), 1989.
- Kauman, D. S. and Manley, W. F.: Pleistocene Maximum and Late Wisconsinan glacier extents across Alaska, U.S.A., *Dev. Quat. Sci.*, 2, 9–27, [https://doi.org/10.1016/S1571-0866\(04\)80182-9](https://doi.org/10.1016/S1571-0866(04)80182-9), 2004.
- Khadka, N., Zhang, G., and Thakuri, S.: Glacial Lakes in the Nepal Himalaya: Inventory and Decadal Dynamics (1977–2017), *Remote Sens.*, 10, 1913, <https://doi.org/10.3390/rs10121913>, 2018.
- King, O., Bhattacharya, A., Bhambr, R., and Bolch, T.: Glacial lakes exacerbate Himalayan glacier mass loss, *Sci. Rep.-UK*, 9, 18145, <https://doi.org/10.1038/s41598-019-53733-x>, 2019.
- Larsen, C. F., Burgess, E., Arendt, A. A., O’Neel, S., Johnson, A. J., and Kienholz, C.: Surface melt dominates Alaska glacier mass balance, *Geophys. Res. Lett.*, 42, 5902–5908, 2015.
- Lea, J. M.: The Google Earth Engine Digitisation Tool (GEEDiT) and the Margin change Quantification Tool (MaQiT) – simple tools for the rapid mapping and quantification of chang-

- ing Earth surface margins, *Earth Surf. Dynam.*, 6, 551–561, <https://doi.org/10.5194/esurf-6-551-2018>, 2018.
- Leonawicz, M., Lindgren, M., Kurkowski, T., Rupp, S., and Walsh, J.: Historical Monthly and Derived Temperature Products Downscaled from CRU TS data via the delta method – 2 km, available at: <http://ckan.snap.uaf.edu/dataset/historical-monthly-and-derived-temperature-products-downscaled-from-cru-ts-data-via-the-delta-m>, last access: 13 July 2021a.
- Leonawicz, M., Lindgren, M., Kurkowski, T., Rupp, S., and Walsh, J.: Historical Monthly and Derived Precipitation Products Downscaled from CRU TS data via the delta method – 2 km, available at: <http://ckan.snap.uaf.edu/dataset/historical-monthly-and-derived-precipitation-products-downscaled-from-cru-ts-data-via-the-delta>, last access: 13 July 2021b.
- Magnin, F., Haeblerli, W., Linsbauer, A., Deline, P., and Raveland, L.: Estimating glacier-bed overdeepenings as possible sites of future lakes in the de-glaciating Mont Blanc massif (Western European Alps), *Geomorphology*, 350, 1–21, 2020.
- McGrath, D., Sass, L., O’Neel, S., Arendt, A., and Kienholz, C.: Hypsometric control on glacier mass balance sensitivity in Alaska and northwest Canada, *Earth’s Futur.*, 5, 324–336, 2017.
- McNeil, C., O’Neel, S., Loso, M., Pelto, M., Sass, L., Baker, E. H., and Campbell, S.: Explaining mass balance and retreat dichotomies at Taku and Lemon Creek Glaciers, Alaska, *J. Glaciol.*, 66, 530–542, <https://doi.org/10.1017/jog.2020.22>, 2020.
- Menounos, B., Hugonnet, R., Shean, D., Gardner, A., Howat, I., Berthier, E., Pelto, B., Tennant, C., Shea, J., Noh, M., Brun, F., and Dehecq, A.: Heterogeneous changes in western North American glaciers linked to decadal variability in zonal wind strength, *Geophys. Res. Lett.*, 46, 200–209, <https://doi.org/10.1029/2018GL080942>, 2019.
- Nye, J. F.: Water Flow in Glaciers: Jökulhlaups, Tunnels and Veins, *J. Glaciol.*, 17, 181–207, <https://doi.org/10.3189/S002214300001354X>, 1976.
- O’Neel, S., McNeil, C., Sass, L. C., Florentine, C., Baker, E. H., Peitzsch, E., McGrath, D., Fountain, A. G., and Fagre, D.: Re-analysis of the US Geological Survey Benchmark Glaciers: long-term insight into climate forcing of glacier mass balance, *J. Glaciol.*, 65, 850–866, 2019.
- Otto, J. C.: Proglacial Lakes in High Mountain Environments, in: *Geomorphology of Proglacial Systems. Geography of the Physical Environment*, edited by: Heckmann, T. and Morche, D., Springer, Cham, [https://doi.org/10.1007/978-3-319-94184-4\\_14](https://doi.org/10.1007/978-3-319-94184-4_14), 2019.
- Péwé, T. L.: Quaternary geology of Alaska: U.S. Geological Survey Professional Paper 835, 145 pp., Reston, USA, <https://doi.org/10.3133/pp835>, 1975.
- Pfeffer, W. T., Arendt, A. A., Bliss, A., Bolch, T., Cogley, J. G., Gardner, A. S., Hagen, J.-O., Hock, R., Kaser, G., and Kienholz, C.: The Randolph Glacier Inventory: a globally complete inventory of glaciers, *J. Glaciol.*, 60, 537–552, 2014.
- Post, A. and Mayo, L. R.: Glacier dammed lakes and outburst floods in Alaska, US Geological Survey, Washington, D.C., 1971.
- Ratajczak, Z., Carpenter, S. R., Ives, A. R., Kucharik, C. J., Ramiadantsoa, T., Stegner, M. A., Williams, J. W., Zhang, J., and Turner, M. G.: Abrupt Change in Ecological Systems: Inference and Diagnosis, *Trends Ecol. Evol.*, 33, 513–526, <https://doi.org/10.1016/j.tree.2018.04.013>, 2018.
- RGI Consortium: Randolph Glacier Inventory – A Dataset of Global Glacier Outlines: Version 6.0: Technical Report, Global Land Ice Measurements from Space, Digital Media, Colorado, USA, <https://doi.org/10.7265/N5-RGI-60>, 2017.
- Roberts, M. J., Tweed, F. S., Russell, A. J., Knudsen, Ó., and Harris, T. D.: Hydrologic and geomorphic effects of temporary ice-dammed lake formation during jökulhlaups, *Earth Surf. Process. Landf.*, 28, 723–737, 2003.
- Robinson, C. T. and Matthaei, S.: Hydrological heterogeneity of an alpine stream–lake network in Switzerland, *Hydrol. Process. An Int. J.*, 21, 3146–3154, 2007.
- Shugar, D. H., Burr, A., Haritashya, U. K., Kargel, J. S., Watson, C. S., Kennedy, M. C., Bevington, A. R., Betts, R. A., Harrison, S., and Strattman, K.: Rapid worldwide growth of glacial lakes since 1990, *Nat. Clim. Chang.*, 10, 939–945, <https://doi.org/10.1038/s41558-020-0855-4>, 2020.
- Shukla, A., Garg, P. K., and Srivastava, S.: Evolution of glacial and high-altitude lakes in the Sikkim, Eastern Himalaya over the past four decades (1975–2017), *Front. Environ. Sci.*, 6, 1–19, <https://doi.org/10.3389/fenvs.2018.00081>, 2018.
- Song, C., Sheng, Y., Wang, J., Ke, L., Madson, A., and Nie, Y.: Heterogeneous glacial lake changes and links of lake expansions to the rapid thinning of adjacent glacier termini in the Himalayas, *Geomorphology*, 280, 30–38, 2017.
- Stokes, C. R., Popovnin, V., Aleynikov, A., Gurney, S. D., and Shahgedanova, M.: Recent glacier retreat in the Caucasus Mountains, Russia, and associated increase in supraglacial debris cover and supra-/proglacial lake development, *Ann. Glaciol.*, 46, 195–203, <https://doi.org/10.3189/172756407782871468>, 2007.
- Sugiyama, S., Minowa, M., Sakakibara, D., Skvarca, P., Sawagaki, T., Ohashi, Y., Naito, N., and Chikita, K.: Thermal structure of proglacial lakes in Patagonia, *J. Geophys. Res.-Earth Surf.*, 121, 2270–2286, <https://doi.org/10.1002/2016JF004084>, 2016.
- Sutherland, J. L., Carrivick, J. L., Gandy, N., Shulmeister, J., Quincey, D. J., and Cornford, S. L.: Proglacial lakes control glacier geometry and behavior during recession, *Geophys. Res. Lett.*, 47, e2020GL088865, <https://doi.org/10.1029/2020GL088865>, 2020.
- Treichler, D., Käab, A., Salzmann, N., and Xu, C.-Y.: Recent glacier and lake changes in High Mountain Asia and their relation to precipitation changes, *The Cryosphere*, 13, 2977–3005, <https://doi.org/10.5194/tc-13-2977-2019>, 2019.
- Truffer, M. and Motyka, R. J.: Where glaciers meet water: Subaqueous melt and its relevance to glaciers in various settings, *Rev. Geophys.*, 54, 220–239, 2016.
- Trüssel, B. L., Truffer, M., Hock, R., Motyka, R. J., Huss, M., and Zhang, J.: Runaway thinning of the low-elevation Yakutat Glacier, Alaska, and its sensitivity to climate change, *J. Glaciol.*, 61, 65–75, <https://doi.org/10.3189/2015JoG14J125>, 2015.
- Tsutaki, S., Nishimura, D., Yoshizawa, T., and Sugiyama, S.: Changes in glacier dynamics under the influence of proglacial lake formation in Rhonegletscher, Switzerland, *Ann. Glaciol.*, 52, 31–36, <https://doi.org/10.3189/172756411797252194>, 2011.
- Tweed, F. S. and Carrivick, J. L.: Deglaciation and proglacial lakes, *Geol. Today*, 31, 96–102, <https://doi.org/10.1111/gto.12094>, 2015.
- Tweed, F. S. and Russell, A. J.: Controls on the formation and sudden drainage of glacier-impounded lakes: implications for jökulhlaup characteristics, *Prog. Phys. Geogr.*, 23, 79–110, 1999.



- Wang, W., Xiang, Y., Gao, Y., Lu, A., and Yao, T.: Rapid expansion of glacial lakes caused by climate and glacier retreat in the Central Himalayas, *Hydrol. Process.*, 29, 859–874, 2015.
- Watson, C. S., Kargel, J. S., Shugar, D. H., Haritashya, U. K., Schiassi, E., and Furfaro, R.: Mass Loss From Calving in Himalayan Proglacial Lakes, *Front. Earth Sci.*, 7, 342, <https://doi.org/10.3389/feart.2019.00342>, 2020.
- Wilson, R., Glasser, N. F., Reynolds, J. M., Harrison, S., Anaconda, P. I., Schaefer, M., and Shannon, S.: Glacial lakes of the Central and Patagonian Andes, *Glob. Planet. Change*, 162, 275–291, <https://doi.org/10.1016/j.gloplacha.2018.01.004>, 2018.
- Wolfe, D. F. G., Kargel, J. S., and Leonard, G. J.: Glacier-dammed ice-marginal lakes of Alaska, in: *Global Land Ice Measurements from Space*, edited by: Kargel, J., Leonard, G., Bishop, M., Kääb, A., and Raup, B., Springer Praxis Books, Springer, Berlin, Heidelberg, <https://doi.org/10.1007/978-3-540-79>, 2014.
- Zemp, M., Frey, H., Gärtner-Roer, I., Nussbaumer, S. U., Hoelzle, M., Paul, F., Haeberli, W., Denzinger, F., Ahlstrøm, A. P., Anderson, B., Bajracharya, S., Baroni, C., Braun, L. N., Cáceres, B. E., Casassa, G., Cobos, G., Dávila, L. R., Delgado Granados, H., Demuth, M. N., Espizua, L., Fischer, A., Fujita, K., Gadek, B., Ghazanfar, A., Ove Hagen, J., Holmlund, P., Karimi, N., Li, Z., Pelto, M., Pitte, P., Popovnin, V. V., Portocarrero, C. A., Prinz, R., Sangewar, C. V., Severskiy, I., Sigurdsson, O., Soruco, A., Usubaliev, R., and Vincent, C.: Historically unprecedented global glacier decline in the early 21st century, *J. Glaciol.*, 61, 745–762, <https://doi.org/10.3189/2015JoG15J017>, 2015.
- Zemp, M., Huss, M., Thibert, E., Eckert, N., McNabb, R., Huber, J., Barandun, M., Machguth, H., Nussbaumer, S. U., and Gärtner-Roer, I.: Global glacier mass changes and their contributions to sea-level rise from 1961 to 2016, *Nature*, 568, 382–386, 2019.
- Zhang, G., Bolch, T., Allen, S., Linsbauer, A., Chen, W., and Wang, W.: Glacial lake evolution and glacier–lake interactions in the Poiqu River basin, central Himalaya, 1964–2017, *J. Glaciol.*, 65, 347–365, <https://doi.org/10.1017/jog.2019.13>, 2019.